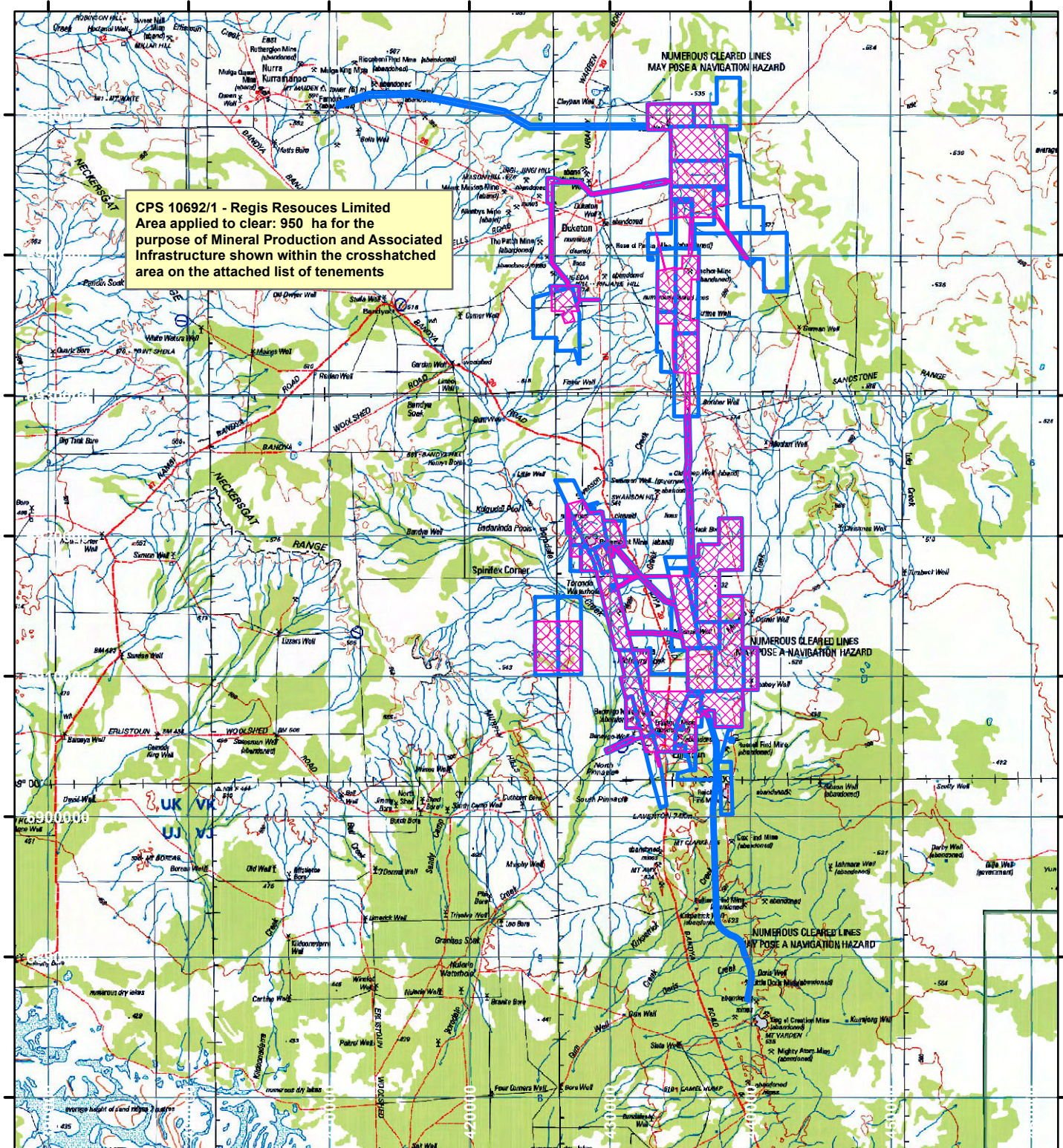




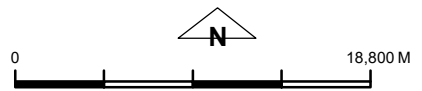
10692/1- Regis Resources Limited



CPS 10692/1 - Regis Resources Limited
 Area applied to clear: 950 ha for the
 purpose of Mineral Production and Associated
 Infrastructure shown within the crosshatched
 area on the attached list of tenements

LEGEND

-  Clearing Instruments
-  Mining Tenements



Scale 1:400,000
 (Approximate when reproduced at A4)
 Geocentric Datum Australia 1994
 Note: the data in this map have not been
 projected. This may result in geometric
 distortion or measurement inaccuracies.

..... Date

Officer with delegated authority under Section 20 of
 the Environmental Protection Act 1986
 Information derived from this map should be
 confirmed with the data custodian acknowledged
 by the agency acronym in the legend.

