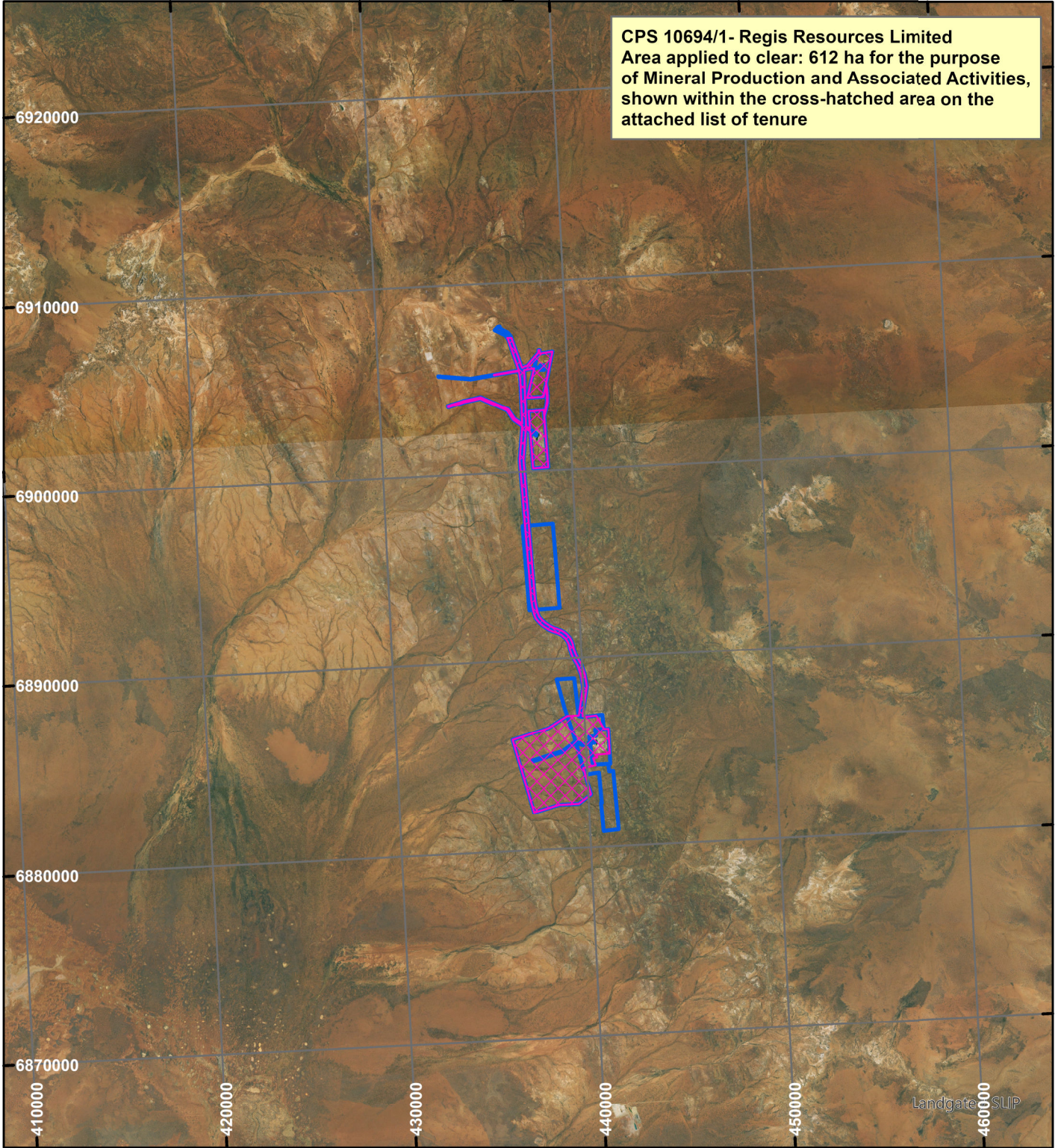


CPS 10694/1- Regis Resources Limited

CPS 10694/1- Regis Resources Limited
Area applied to clear: 612 ha for the purpose
of Mineral Production and Associated Activities,
shown within the cross-hatched area on the
attached list of tenure



LEGEND



Clearing Instruments



Mining Tenements

Orthophotography sourced from Landgate



Scale 1:300,000

(Approximate when reproduced at A4)

Geocentric Datum Australia 1994

Note: the data in this map have not been projected. This may result in geometric distortion or measurement inaccuracies.

..... Date

Officer with delegated authority under Section 20 of the Environmental Protection Act 1986

Information derived from this map should be confirmed with the data custodian acknowledged by the agency acronym in the legend.