

CPS 10710/1 - Map C

114°13'34"E

114°13'41"E

114°13'48"E

27°20'17"S

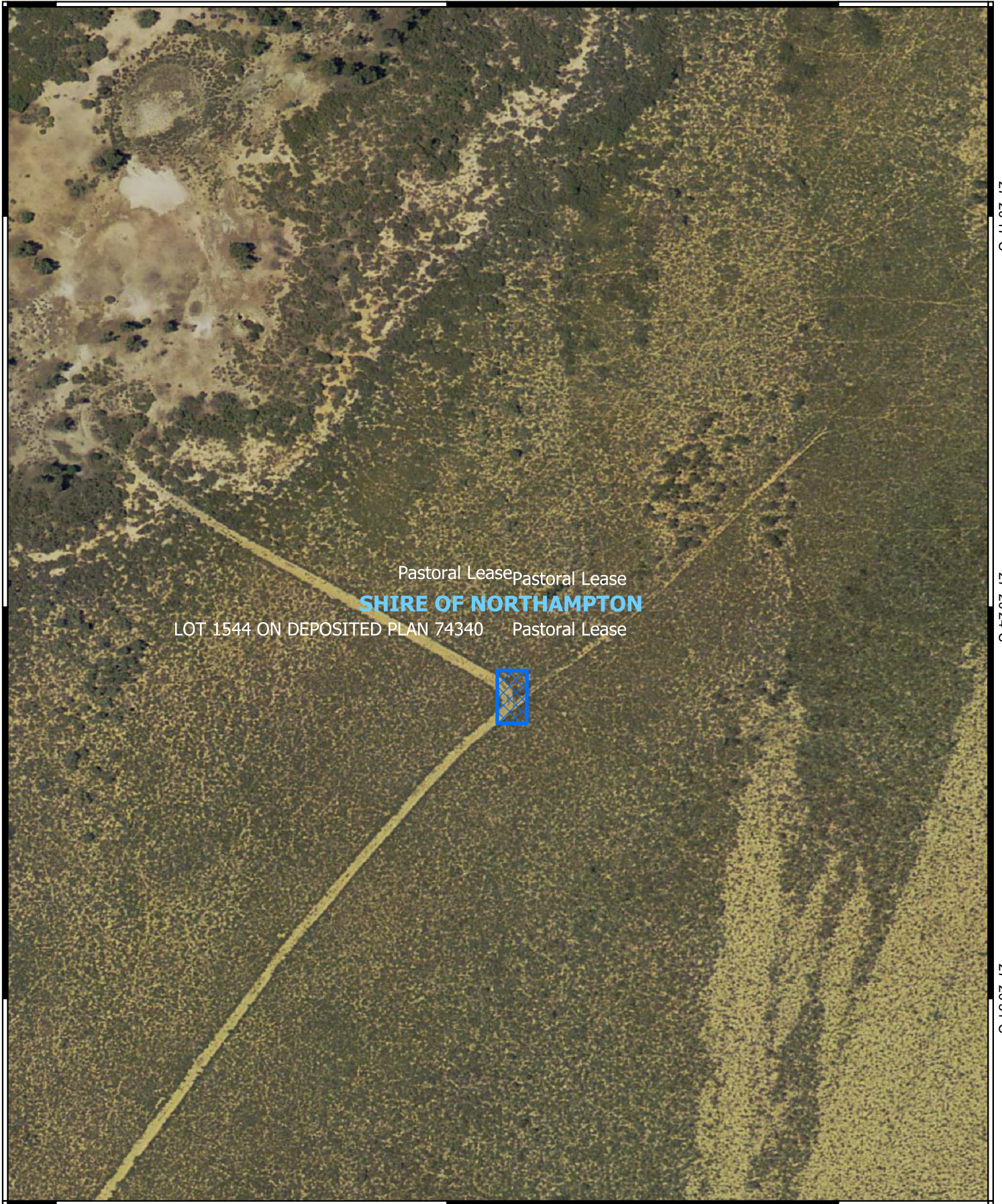
27°20'17"S

27°20'24"S

27°20'24"S

27°20'31"S

27°20'31"S


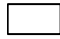



114°13'34"E

114°13'41"E

114°13'48"E

Legend

-  CPS areas applied to clear
-  Land Tenure
-  Local Government Authorities



1:2,000

Projection: GDA2020



GOVERNMENT OF WESTERN AUSTRALIA