

CPS 10710/1 - Map D

114°17'24"E

114°17'31"E

27°20'10"S

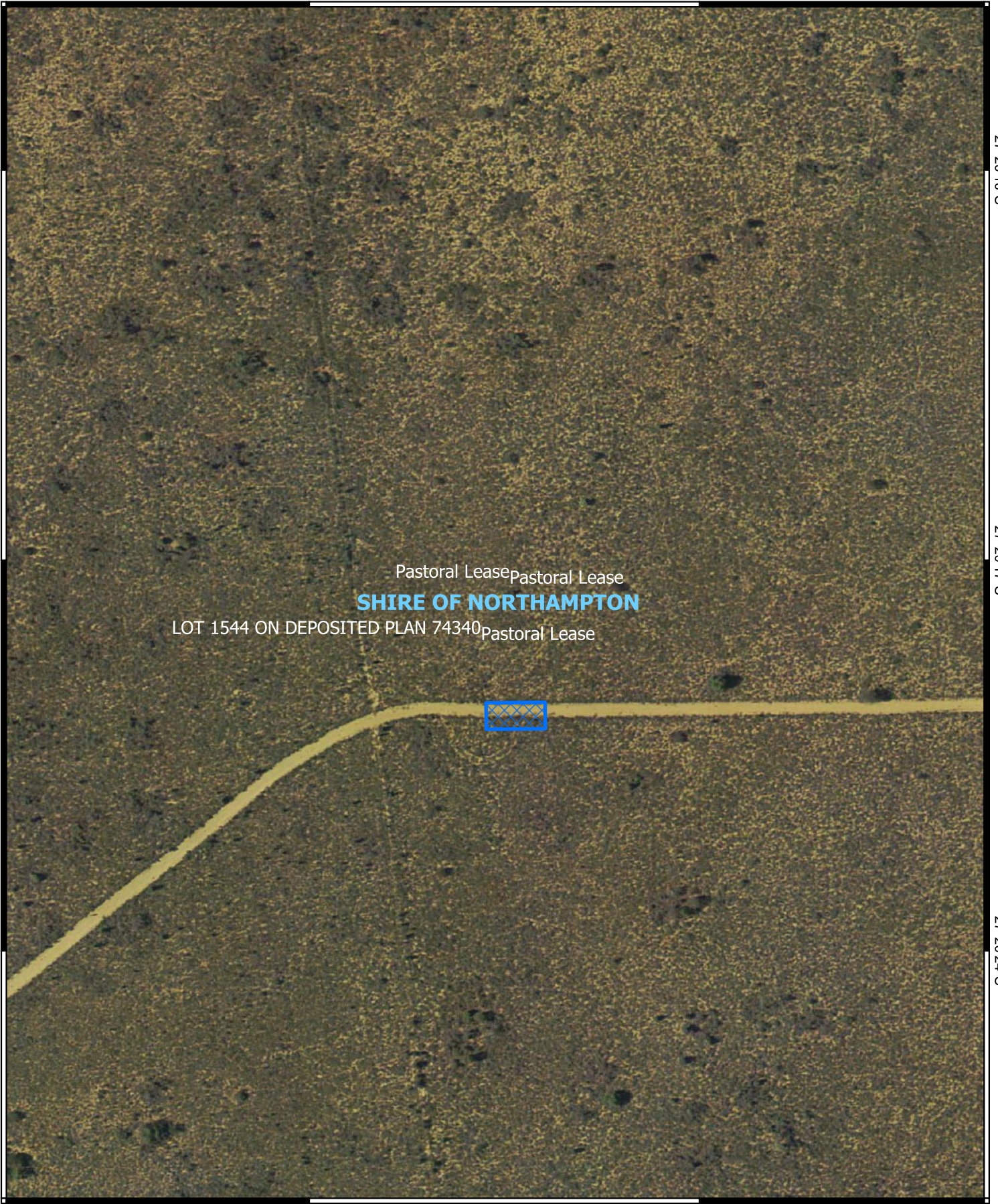
27°20'10"S

27°20'17"S

27°20'17"S

27°20'24"S


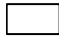

27°20'24"S



114°17'24"E

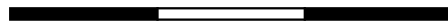
114°17'31"E

Legend

-  CPS areas applied to clear
-  Land Tenure
-  Local Government Authorities



0 50 100 150 m



1:2,000

Projection: GDA2020



GOVERNMENT OF
WESTERN AUSTRALIA