

CPS 10732/1 - Map

116°38'13"E

116°38'24"E

116°38'35"E

30°5'35"S

30°5'46"S

30°5'56"S

30°6'7"S

30°6'18"S

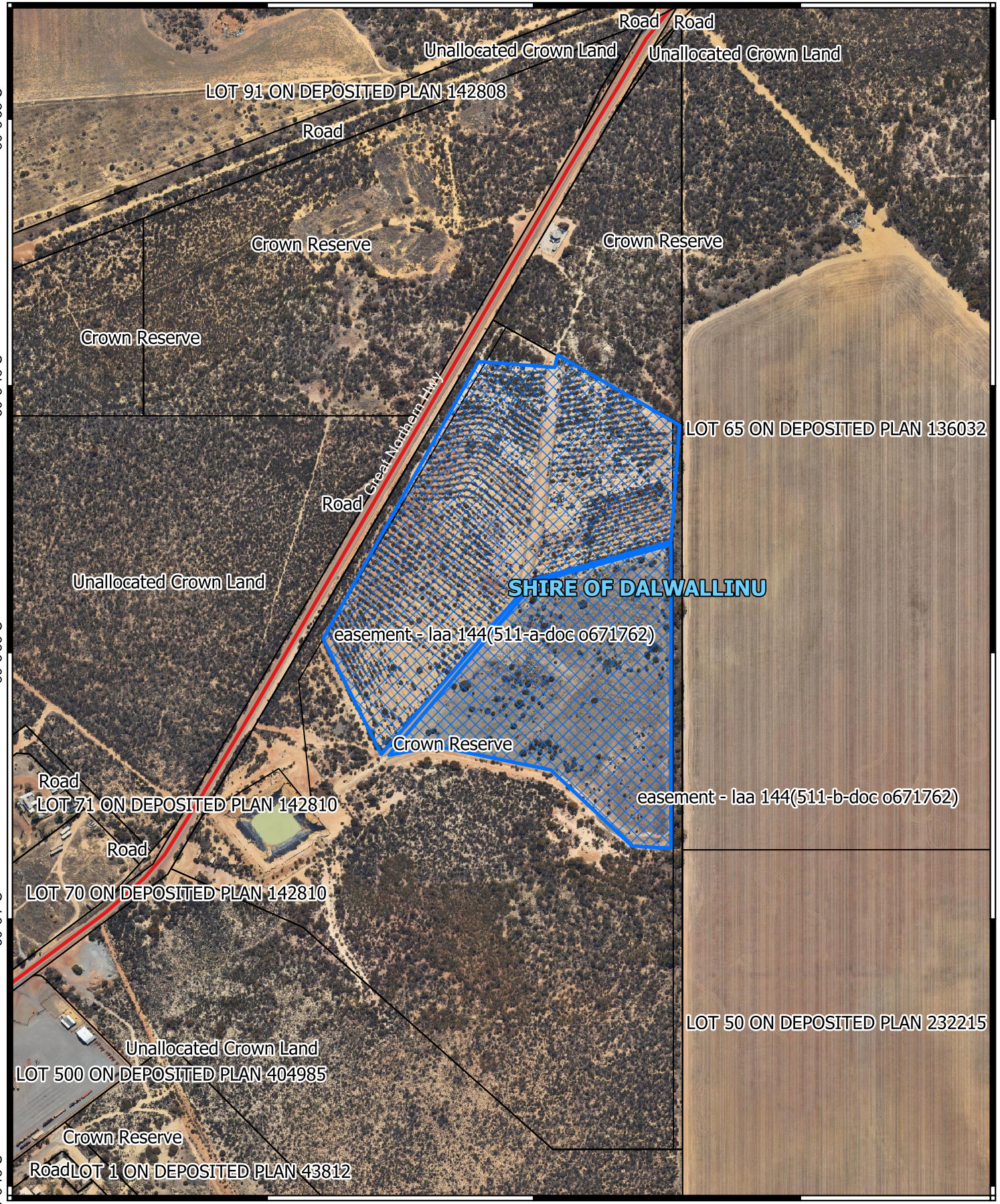
30°5'35"S

30°5'46"S




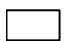
30°5'56"S

30°6'7"S

30°6'18"S



Legend

-  CPS areas applied to clear
-  Local Government Authorities
-  Roads
-  Land Tenure



1:4,200

Projection: GDA2020



GOVERNMENT OF
WESTERN AUSTRALIA