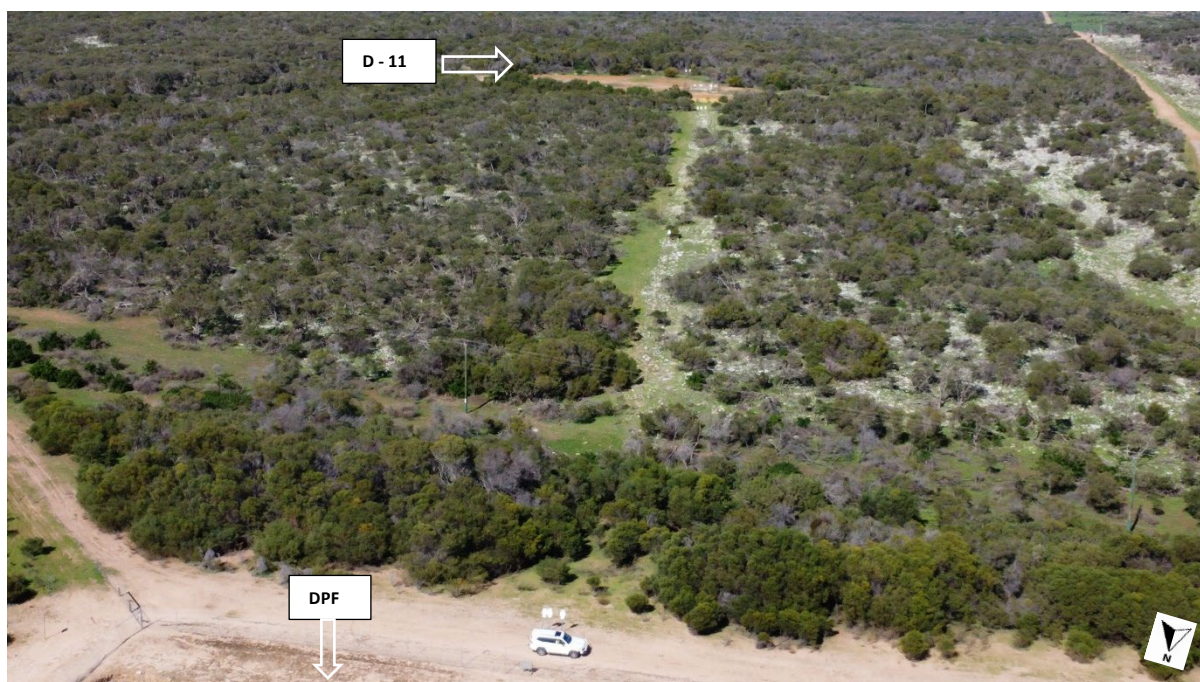


**Figure 1 Overview of the Clearing Footprint for Dongara Gas Field Decommissioning.**



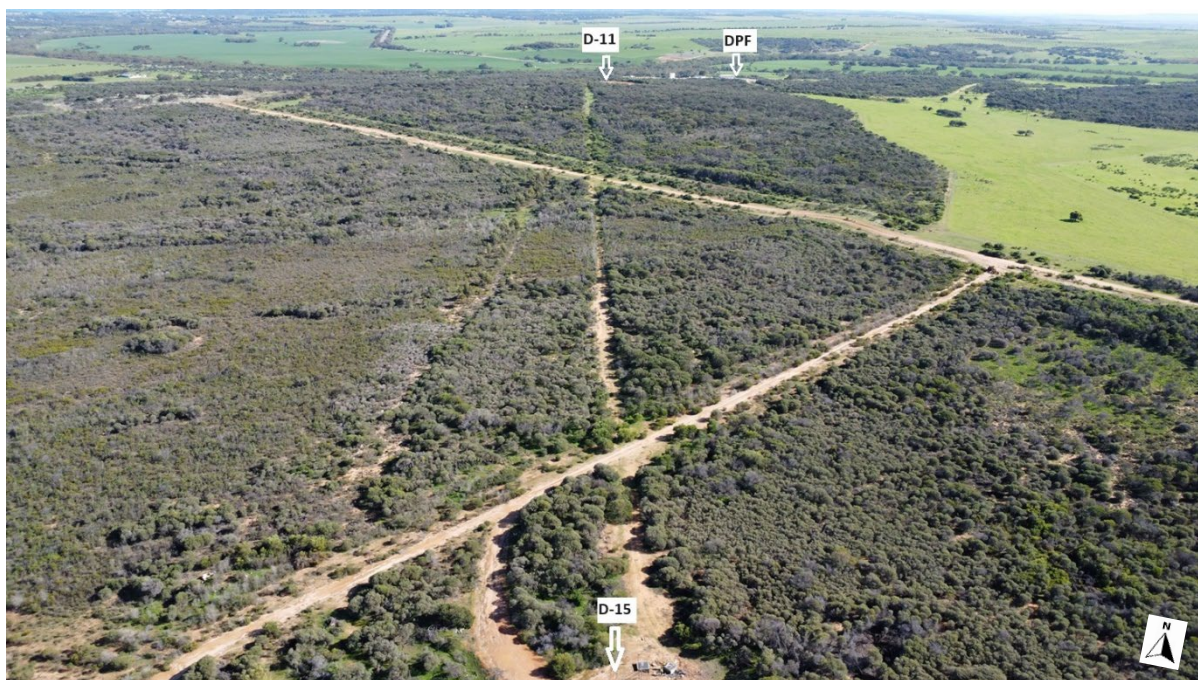


**Figure 2** Dongara Production Facility Flowline to Dongara-11 wellsite.



**Figure 3** Dongara-11 flowline to Dongara-15 wellsite.



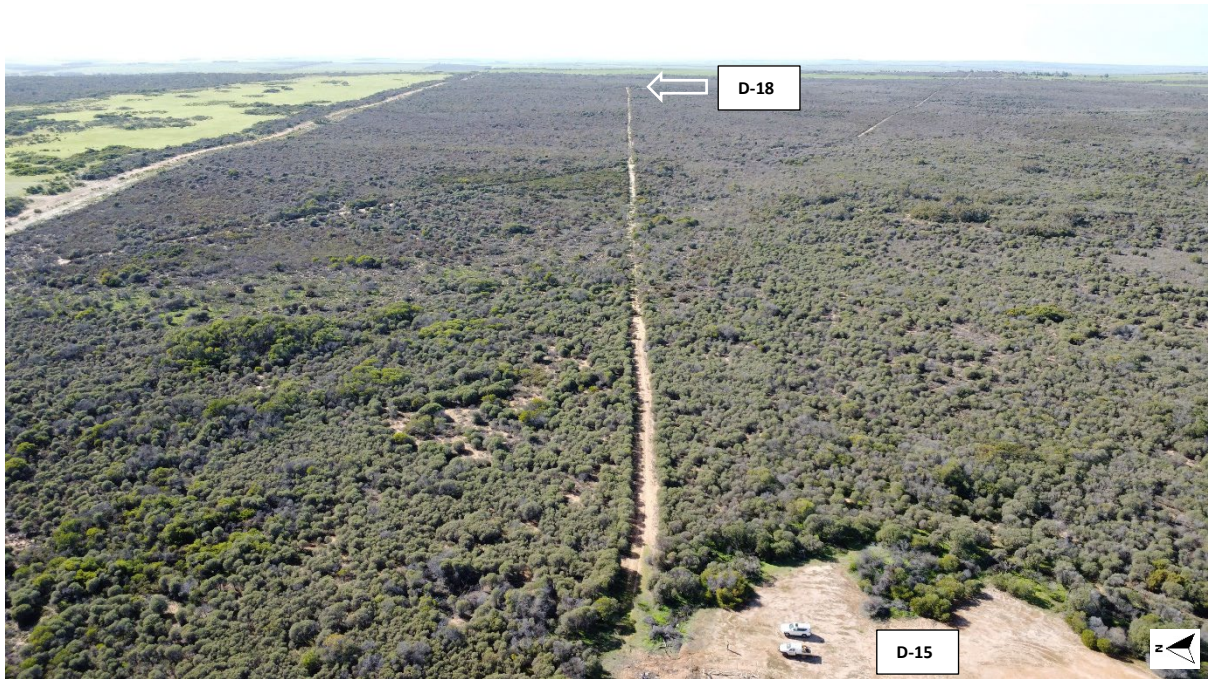


**Figure 4** Dongara-11 Flowline to Dongara-15 Flowline.

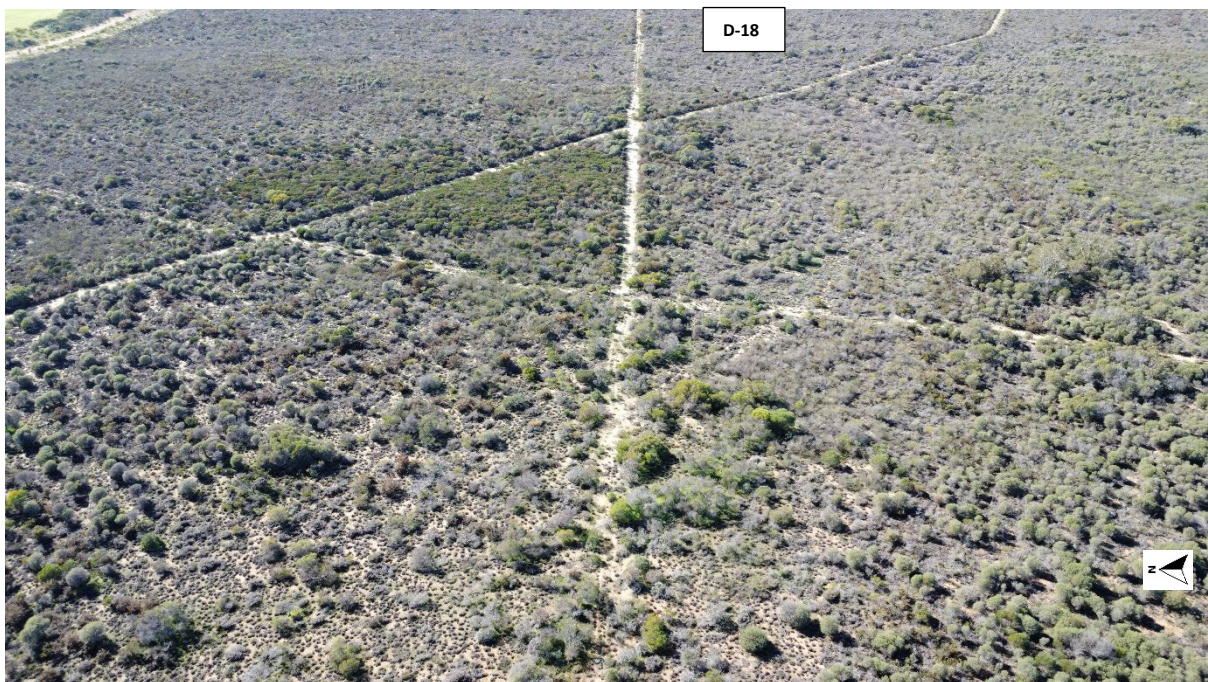


**Figure 5** Dongara-15 Wellsite.



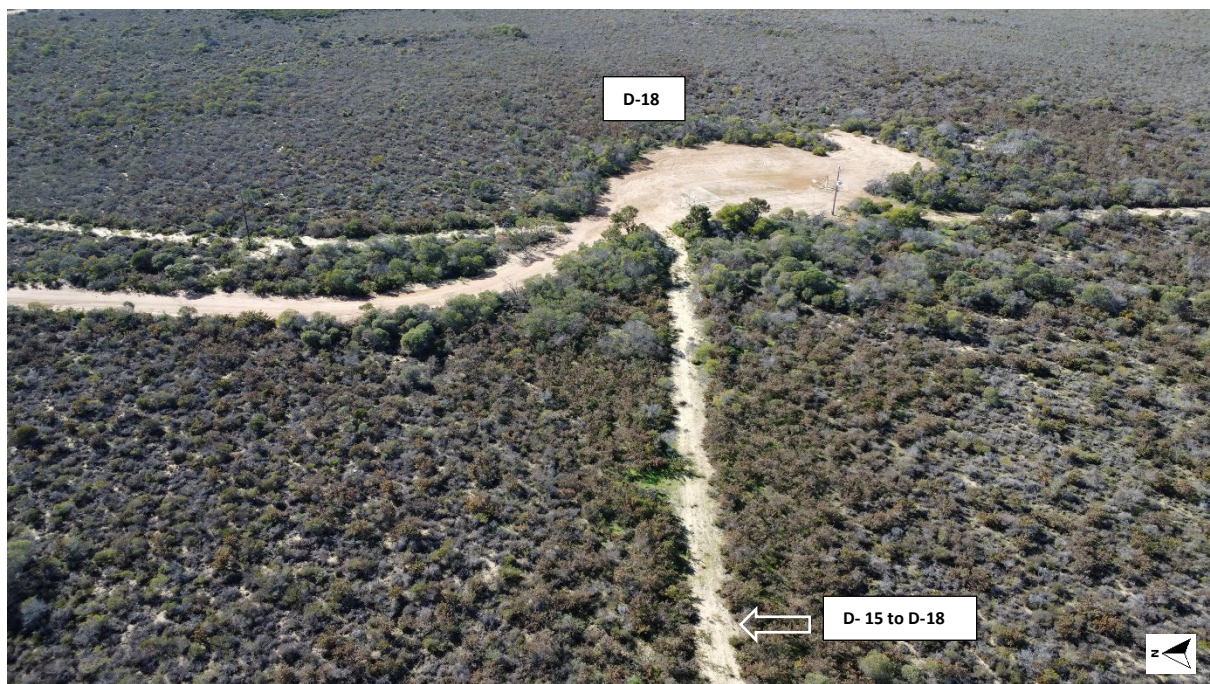


**Figure 6** Dongara-15 flowline to Dongara-18 wellsite.

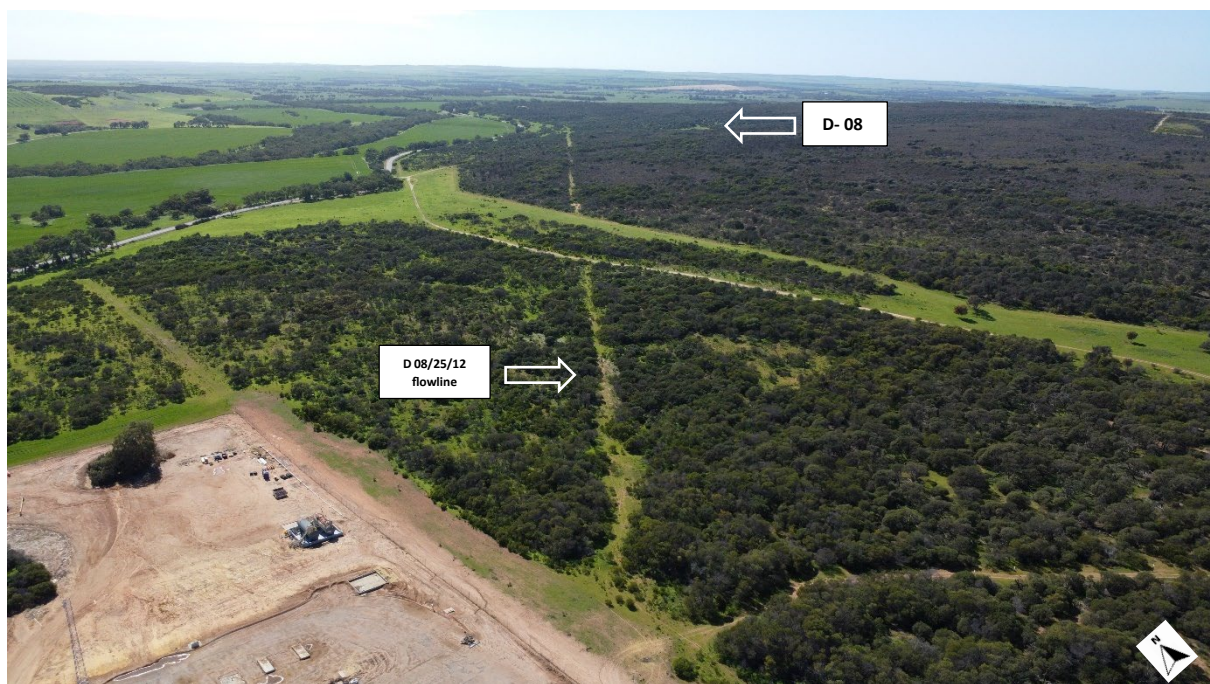


**Figure 7** Dongara-15 flowline to Dongara-18 wellsite.



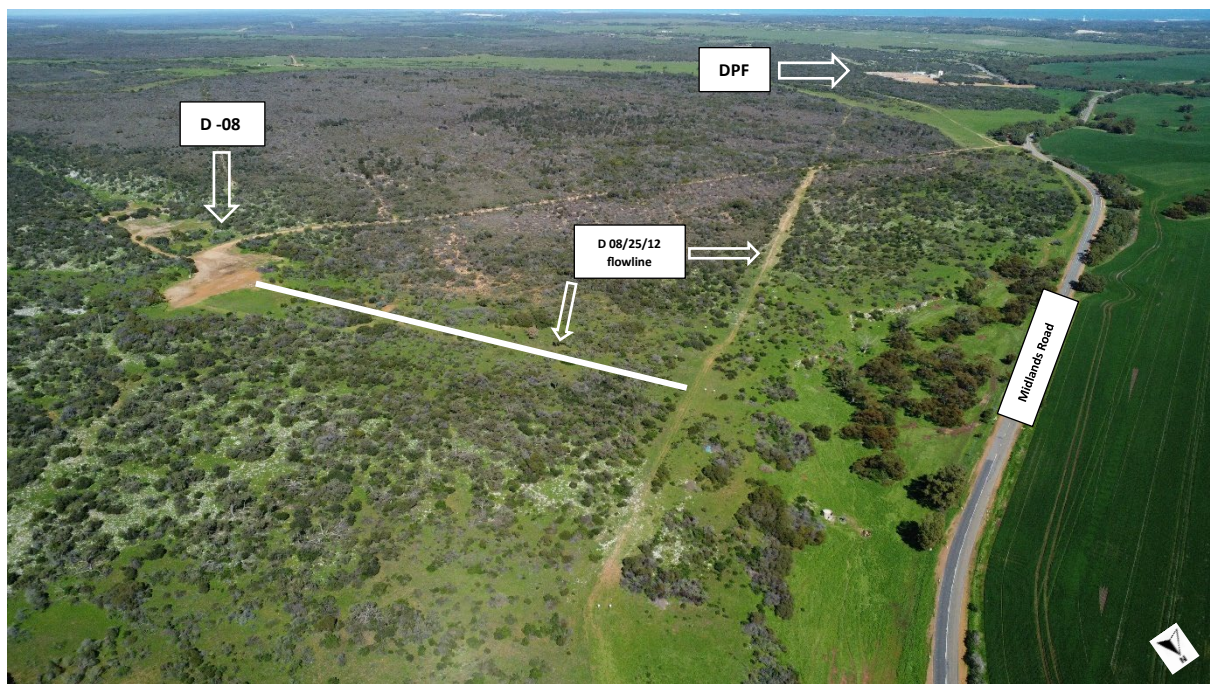


**Figure 8 Dongara-18 wellsite.**

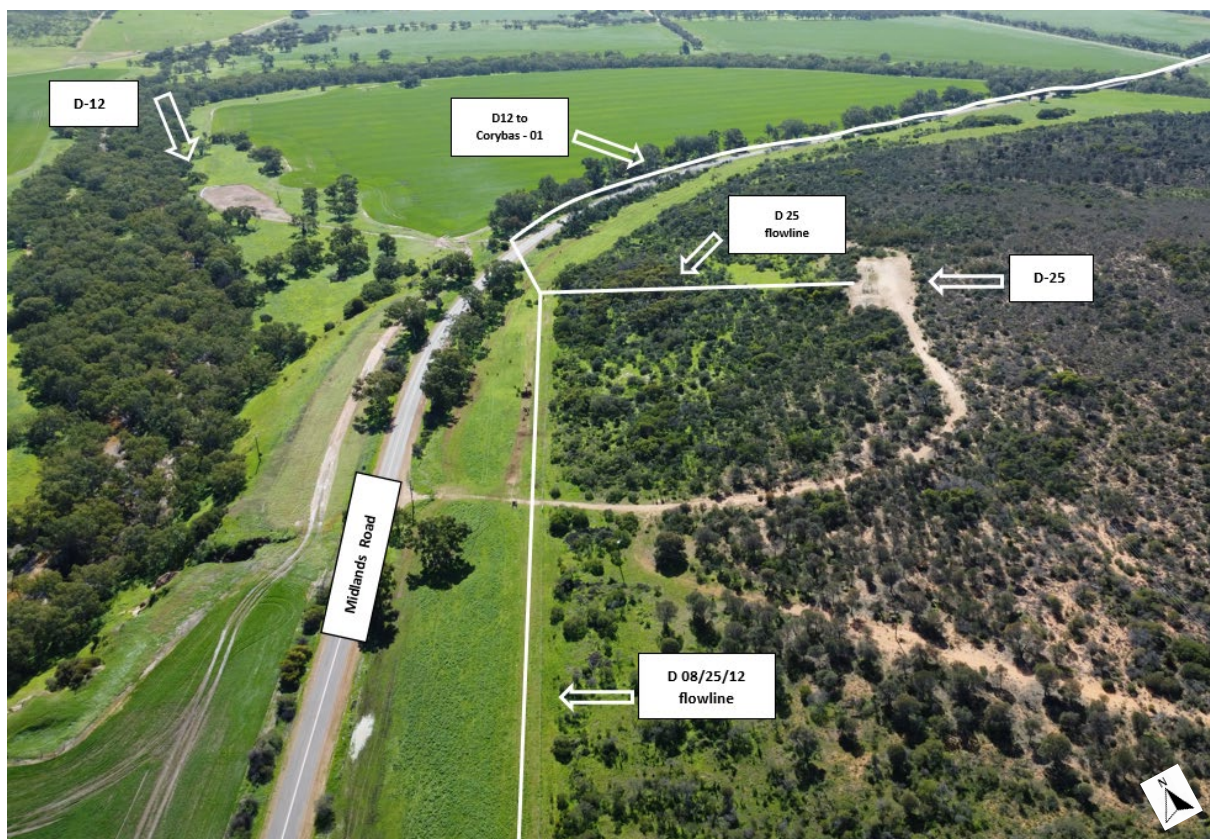


**Figure 9 Dongara Production Facility to Dongara-08 / 25 / 12 Flowline.**



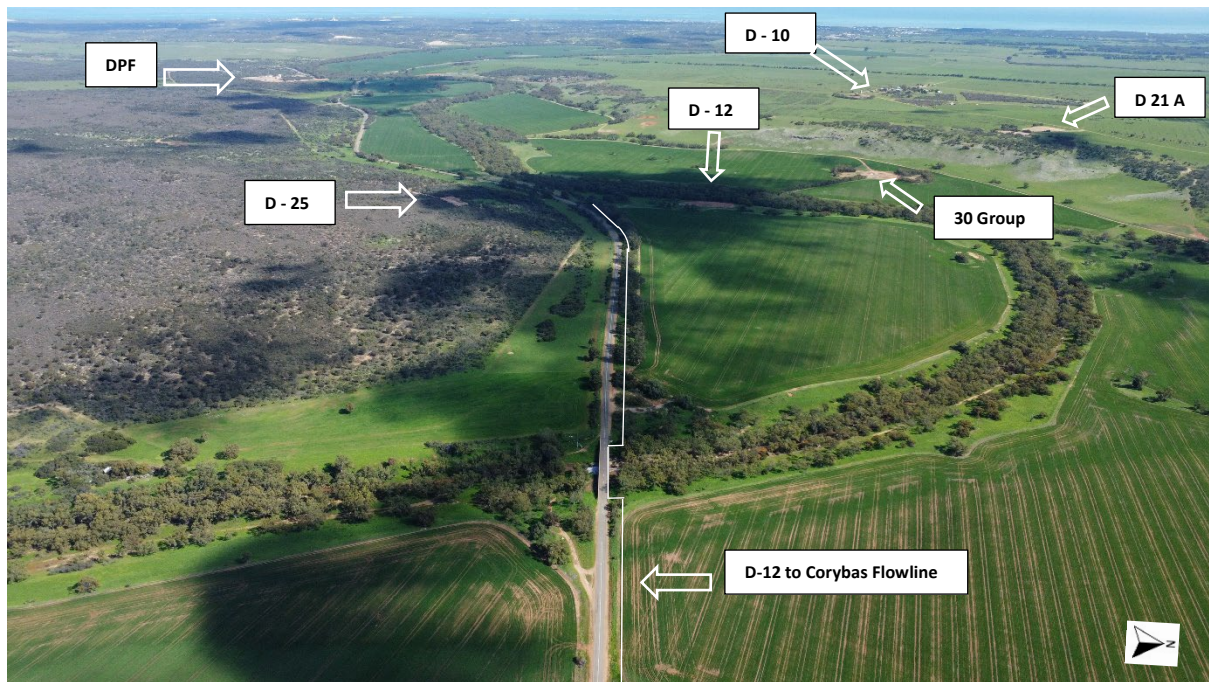


**Figure 10** Dongara-08 to Dongara-08/25/12 flowline.



**Figure 11** Dongara 08 / 25 / 12 flowline to Corybas-01.



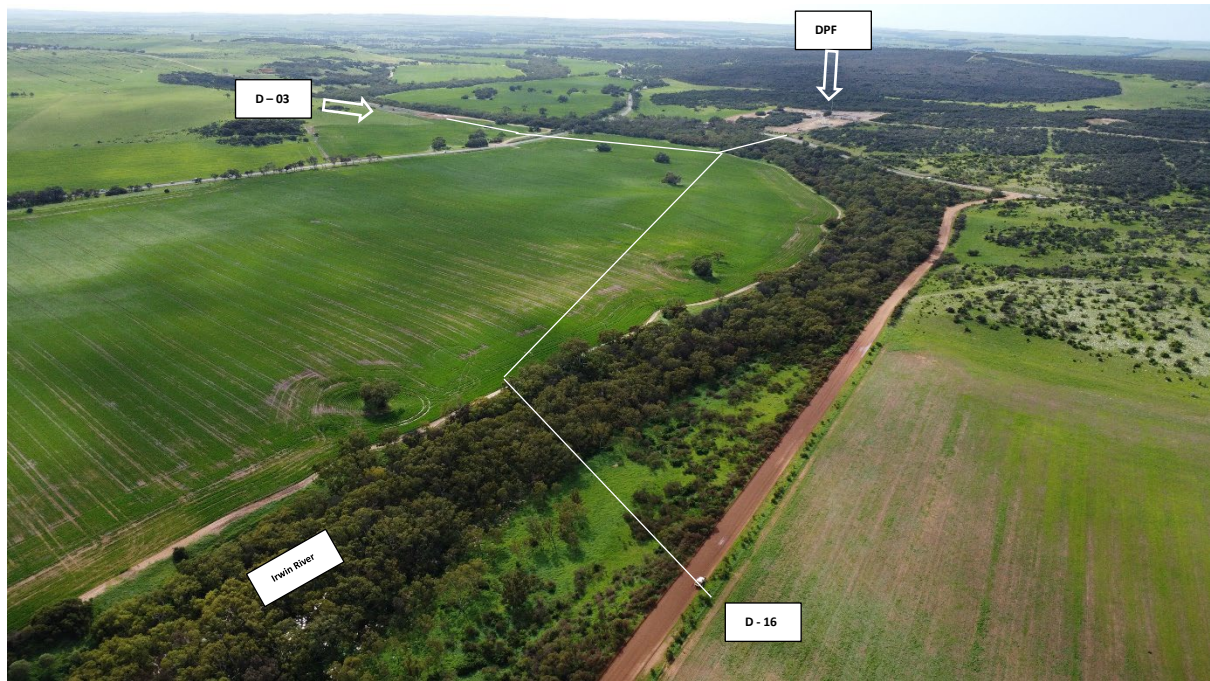


**Figure 12** Dongara-12 to Corybas Flowline. Flowline attached to Mountain bridge crossing the Irwin River.



**Figure 13** Mountain Bridge: Dongara-12 to Corybas-01 Flowline.





**Figure 14** Dongara-16 flowline and Dongara-03 flowline to Dongara Production Facility, crossing the Irwin River.