

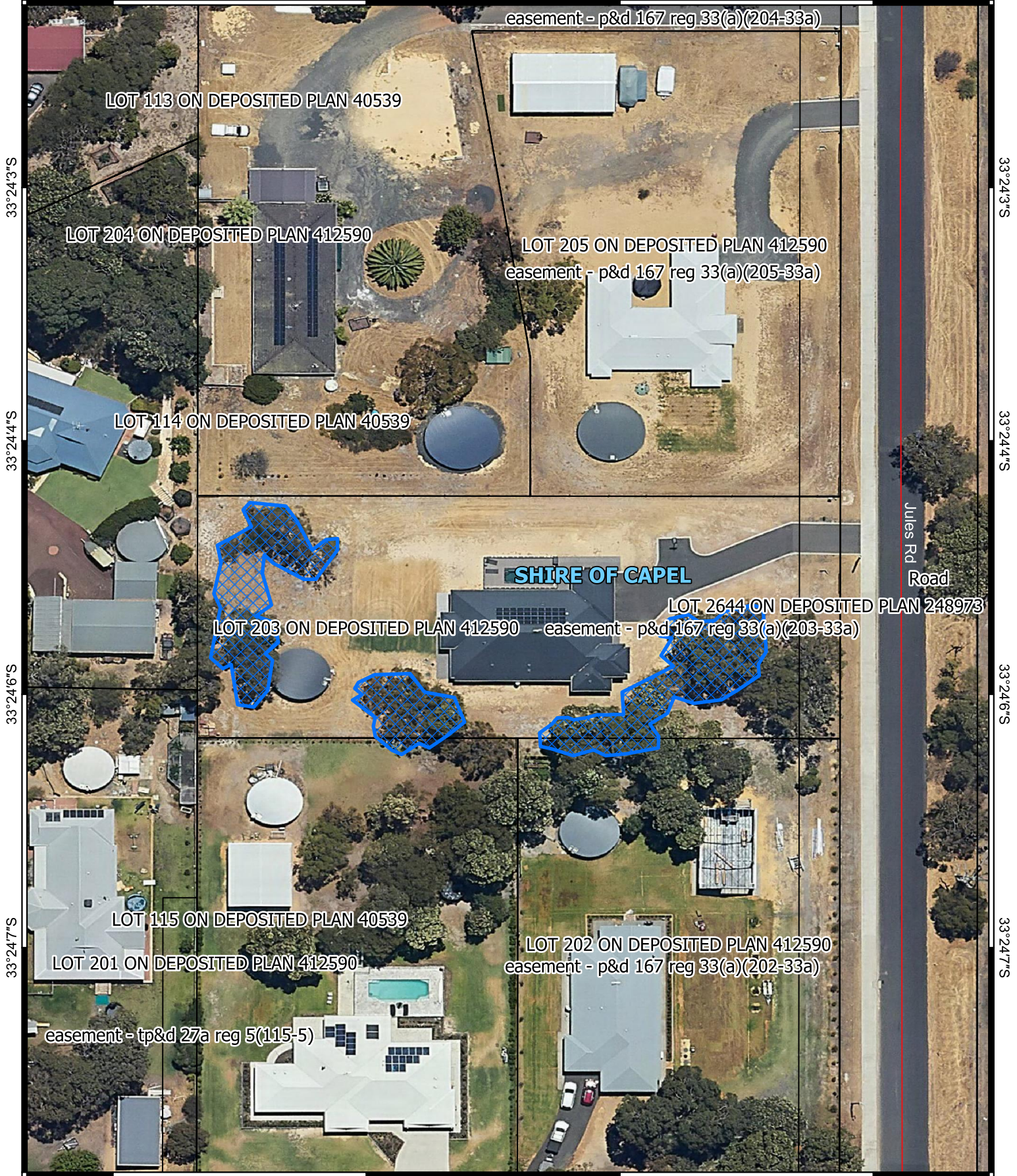
CPS 10779/1 - Map

115°38'51"E

115°38'53"E

115°38'54"E

115°38'56"E



33°24'3"S

33°24'4"S

33°24'6"S

33°24'7"S

33°24'3"S

33°24'4"S

33°24'6"S

33°24'7"S

115°38'51"E

115°38'53"E

115°38'54"E

115°38'56"E

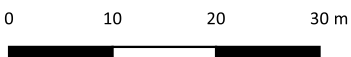
Legend

-  CPS areas applied to clear
-  Land Tenure (LGATE_226) - SLIP
-  Local Government Authorities

Roads

-  Minor

N



1:548

Projection: GDA2020



GOVERNMENT OF WESTERN AUSTRALIA