

10 June 2025

## CPS10801/1 CLEARING PERMIT APPLICATION OFFSET PROPOSAL, CITY OF KALAMUNDA.

Further to a meeting held on the 19 March 2025, with the Department of Water and Environmental Regulation (DWER) I provide below the City of Kalamunda's proposed offset site and information pertaining to the offset requirement.

Discussed in the meeting was several offset options for consideration. The City has chosen to revegetate a completely degraded area within a City managed reserve that is now vested as Recreation and Conservation since 2024.

### OFFSET PROPOSAL

The City of Kalamunda is proposing to offset the removal of nine (9) mature *Corymbia calophylla* (marri) trees from Ray Owen Reserve to facilitate an expansion to the current recreation oval. The nine trees, including the canopy area, equates to 0.27ha of native vegetation to be removed.

The City proposes to revegetate **0.85 ha** of completely degraded 'Dwellingup 2' vegetation complex to provide high quality foraging habitat for the threatened species of black cockatoos.

The site selected shown within **Attachment A** is Jorgensen Park at 2 Crescent Road, Kalamunda (Reserve Number 50554). Photographs of the site condition has been included with numbered photo points. This site has been selected as it is a known roosting site (DBCA-052 and DBCA-064 databases) for the three species of black cockatoos, is under the care of the City of Kalamunda and is a reserve which has changed its vesting status to Recreation and Conservation.

It is proposed to revegetate the completed degraded site by seeding and planting a diversity of species in the list provided in **Table 1** below. These species functionally represent the remnant vegetation within the reserve with a primary objective of achieving a disproportionate representation of species suited for foraging by black cockatoos.

The following target densities are proposed within the revegetation.

- Trees/large shrubs Year 1 – at least 300 individuals and Year 5 at least 100 individuals

- Upper/Mid story and Lower Mid Storey species Year 1 - at least 3,000 individuals and Year 5 at least 1,000 individuals

Monitoring of the revegetation will be annually over a 5 year period to determine the trajectory of the above targets. Infill planting will be undertaken if targets are not met.

**Table 1: Revegetation Species List Jorgensen Park**

| Genus                     | Species           | Common Name              |
|---------------------------|-------------------|--------------------------|
| <b>Trees/Large shrubs</b> |                   |                          |
| <b>**Allocasuarina</b>    | <b>fraseriana</b> | <b>Common Sheoak</b>     |
| <b>**Corymbia</b>         | <b>calophylla</b> | <b>Marri</b>             |
| <b>**Eucalyptus</b>       | <b>marginata</b>  | <b>Jarra</b>             |
| <b>Upper/Mid-storey</b>   |                   |                          |
| <b>**Acacia</b>           | <b>saligna</b>    | <b>"Coojong"</b>         |
| Acacia                    | celastriopholia   | Glowing Wattle           |
| Acacia                    | extensa           | Wiry wattle              |
| Acacia                    | pulchella         | Prickly Moses            |
| Adenanthos                | cygnorum          | Common Woolly Bush       |
| Allocasuarina             | humilis           | Dwarf Sheoak             |
| <b>**Banksia</b>          | <b>grandis</b>    | <b>Bull Banksia</b>      |
| <b>**Banksia</b>          | <b>sessilis</b>   | <b>Parrot Bush</b>       |
| <b>**Banksia</b>          | <b>undata</b>     | <b>Urchin Dryandra</b>   |
| Banksia                   | armata            | Prickly Dryandra         |
| Banksia                   | sphaerocarpa      | Fox Banksia              |
| Calothamnus               | rupestris         | Mouse ears               |
| Calothamnus               | quadrifidus       | One-sided Bottlebush     |
| Daviesia                  | divaricata        | Marno                    |
| Grevillea                 | wilsonii          | Native Fuchsia           |
| <b>**Hakea</b>            | <b>petiolaris</b> | <b>Sea Urchin Hakea</b>  |
| Hakea                     | cristata          | Snail Hakea              |
| <b>**Hakea</b>            | <b>trifurcata</b> | <b>Two Leaf Haka</b>     |
| <b>**Hakea</b>            | <b>cyclocarpa</b> | <b>Ramshon</b>           |
| <b>**Hakea</b>            | <b>undulata</b>   | <b>Wavy-leaved Hakea</b> |
| <b>**Hakea</b>            | <b>prostrata</b>  | <b>Harsh Hakea</b>       |
| Leptospermum              | erubescens        | Roadside Tea-tree        |
| Macrozamia                | riedlei           | Zamia                    |
| Xanthorrhoea              | preissii          | Grass Tree               |
| <b>Lower/Mid-storey</b>   |                   |                          |
| Acacia                    | drummondii        | Drummond's Wattle        |

**\*\*Black Cockatoo Plant Species**

**Table 1: Revegetation Species List Jorgensen Park (Continued)**

| Genus                               | Species            | Common Name                 |
|-------------------------------------|--------------------|-----------------------------|
| <b>Lower/Mid-storey (continued)</b> |                    |                             |
| Acacia                              | stenoptera         | Narrow Winged Wattle        |
| Baeckea                             | camphorosmae       | Camphor Myrtle              |
| Boronia                             | crenulata          | Aniseed Boronia             |
| Bossiaea                            | pulchella          |                             |
| Bossiaea                            | ornata             | Broad-leaved Brown Pea      |
| Calothamnus                         | sanguineus         | Silky-leaved Blood Flower   |
| Chorizema                           | dicksonii          | Yellow-eyed Flame Pea       |
| Daviesia                            | cordata            | Booh-leaf Daviesia          |
| Daviesia                            | horrida            | Prickly Bitter-pea          |
| Daviesia                            | nudiflora          |                             |
| Daviesia                            | decurrens          | Prickly Bitter-pea          |
| Dianella                            | divaricata         | Flax Lily                   |
| <b>**Hakea</b>                      | <b>lissocarpha</b> | <b>Honey Bush</b>           |
| Hakea                               | erinacea           | Hedgehog Hakea              |
| Hakea                               | stenocarpa         | Narrow-fruited Hakea        |
| Hypocalymma                         | robustum           | Swan River Myrtle           |
| Labichea                            | punctata           | Lanced-leaved Cassia        |
| Lasiopetalum                        | floribundum        | Free Flowering Lasiopetalum |
| Isopogon                            | sphaerocephalus    | Drumstick Isopogon          |
| Isopogon                            | dubius             | Pincushion Coneflower       |
| Marianthus                          | bicolor            | Painted Marianthus          |
| Petrophile                          | squamata           |                             |
| Petrophile                          | serruriae          |                             |
| Thomasia                            | glutinosa          | Sticky Thomasia             |
| Trymalium                           | ledifolium         |                             |
| Verticordia                         | acerosa            |                             |
| Verticordia                         | densiflora         | Compacted Featherflower     |
| Verticordia                         | plumosa            | Plumed Featherflower        |
| Xanthorrhoea                        | gracilis           | Graceful Grass Tree         |
| <b>Groundcover/Climber</b>          |                    |                             |
| Acacia                              | nervosa            | Rib Wattle                  |
| Acacia                              | willdenowiana      | Grass Wattle                |
| Andersonia                          | lehmanniana        |                             |
| Anigozanthos                        | manglesii          | Mangles Kangaroo Paw        |

**\*\*Black Cockatoo Plant Species**

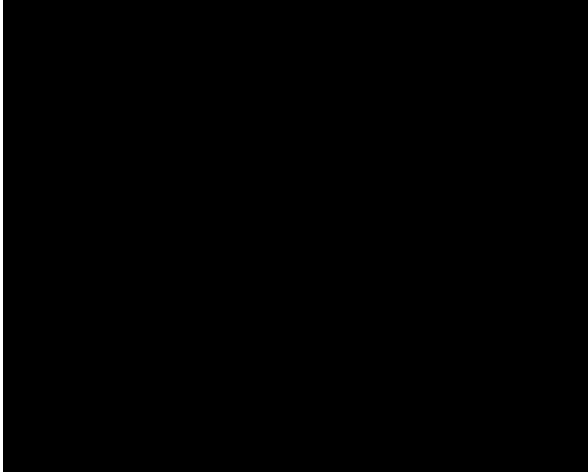
**Table 1: Revegetation Species List Jorgensen Park (Continued)**

| Genus                                  | Species        | Common Name          |
|--|----------------|----------------------|
| <b>Groundcover/Climber (continued)</b> |                |                      |
| Austrostipa                            | elegantissima  | Elegnat spear grass  |
| Banksia                                | nivea          | Couch Honeypot       |
| Bossiaea                               | eriocarpa      | Common Brown Pea     |
| Chamaescilla                           | corymbosa      | Blue Squill          |
| Conostylis                             | setigera       | Bristly Cottonhead   |
| Conostylis                             | setosa         | White Cottonhead     |
| Cyathochaeta                           | avenacea       |                      |
| Dampiera                               | linearis       | common Dampiera      |
| Dampiera                               | alata          | Winged-stem Dampiera |
| Daviesia                               | preissii       |                      |
| Daviesia                               | rhombifolia    |                      |
| Desmocladius                           | flexuosus      |                      |
| Gastrolobium                           | capitatum      | Bacon and Eggs       |
| Gompholobium                           | marginatum     |                      |
| Haemodorum                             | laxum          | Bloodroot            |
| Haemodorum                             | paniculatum    | "Mardja"             |
| Haemodorum                             | spicatum       | "Mardja"             |
| Hemiandra                              | pungens        | Snake Bush           |
| Hovea                                  | chorizemifolia | Holly Leaved Hovea   |
| Hovea                                  | trisperma      | Common Hovea         |
| Kennedia                               | prostrata      | Running Postman      |
| Kennedia                               | coccinea       | Coral-vine           |
| Lechenaultia                           | biloba         | Blue Leschenaultia   |
| Lobelia                                | tenoiur        | Slender Lobelia      |
| Melaleuca                              | scabra         | Rough Honey Myrtle   |
| Neurachne                              | alopecuroidea  | Foxtail Mulga Grass  |
| Orthrosanthus                          | laxus          | Morning Iris         |
| Pattersonia                            | occidentalis   | Purple flag          |
| Pattersonia                            | umbrosa        | Yellow Flag          |
| Philotheca                             | spicata        | Salt and Pepper      |
| Phyllanthus                            | calycinus      | False Boronia        |
| Sollya                                 | heterophylla   | Australian Bluebell  |
| Sphaerolobium                          | medium         | Globe Pea            |

**\*\*Black Cockatoo Plant Species**

**Summary and closing**

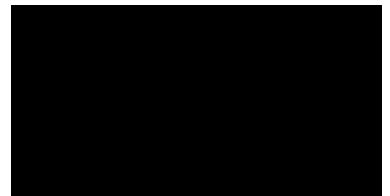
The above offset site is proposed to addresses the request by DWER to offset the clearing of nine marri trees. Should you have any queries in relation to this proposal, please contact the undersigned on 0409 101 647 or via [toni.burbidge@emergeassociates.com.au](mailto:toni.burbidge@emergeassociates.com.au).



Encl: Attachment A – Site Map and Photographs

This page has been left blank intentionally.

Attachment A







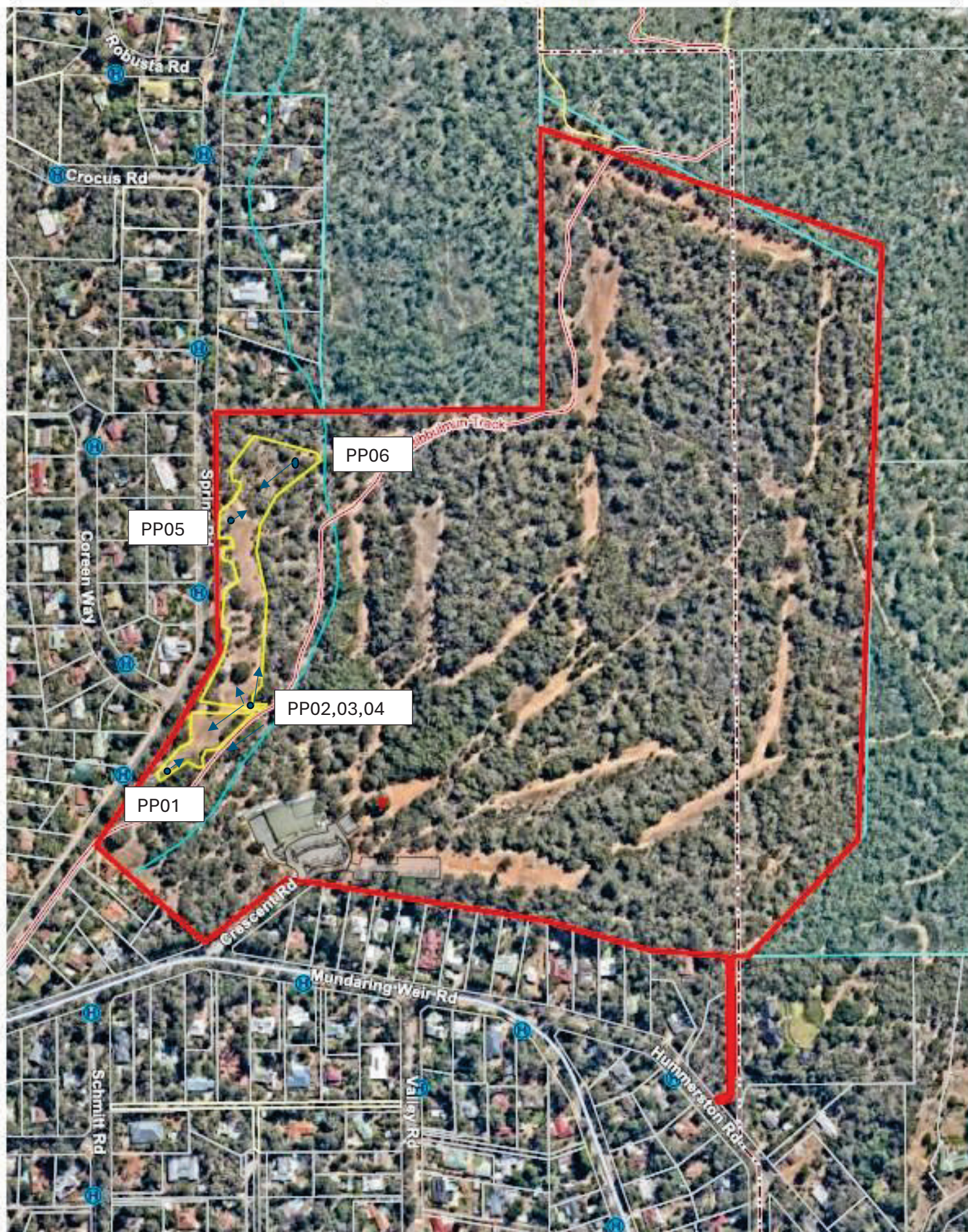






Photo Point 01



Phot Point 02





Photo Point 03



Photo Point 04





Photo Point 05



Photo Point 06