

CPS 10874/1 - Context Map

115°9'0"E

115°12'0"E

115°15'0"E

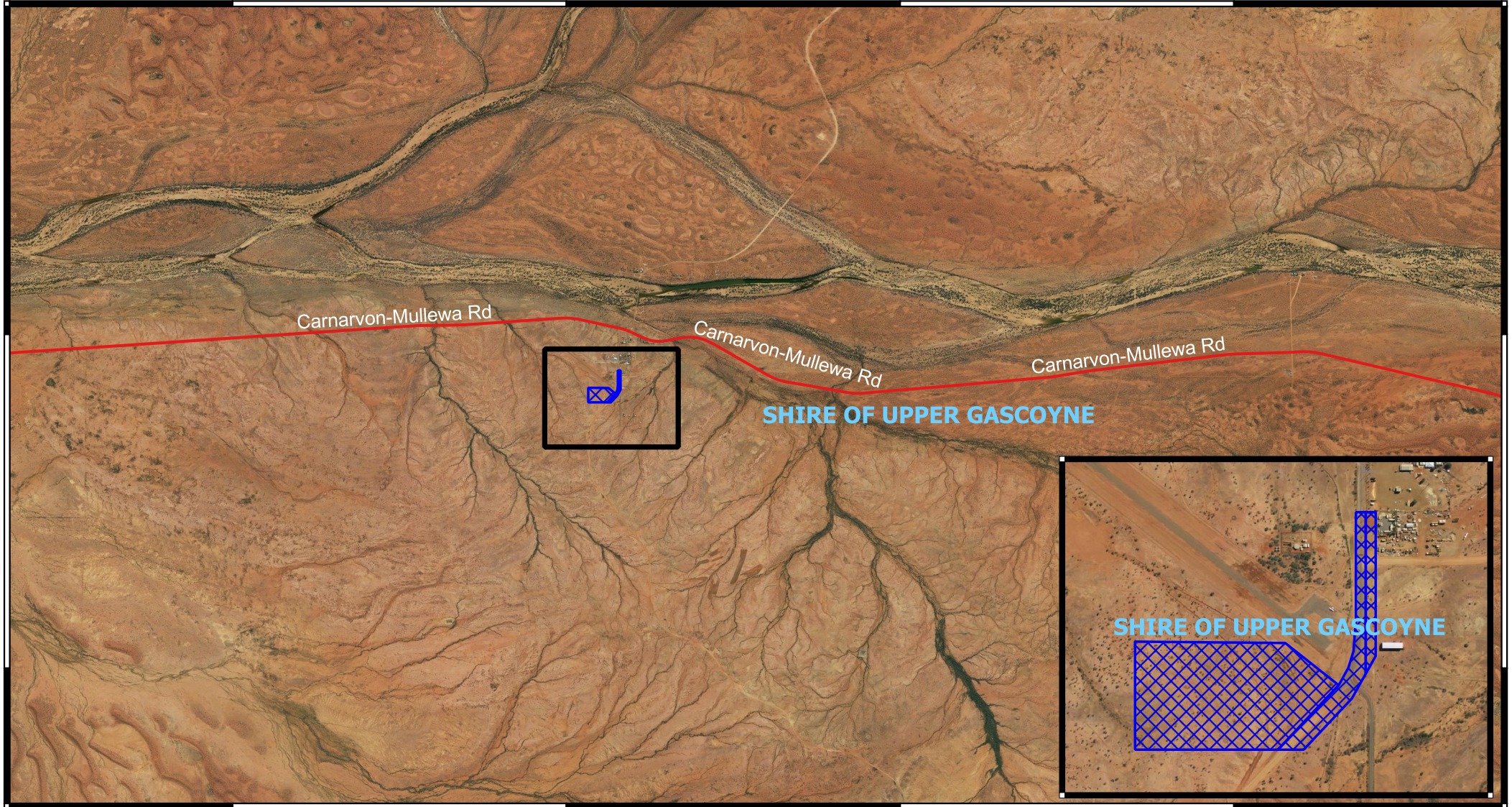
115°18'0"E

25°3'0"S

25°6'0"S

25°3'0"S

25°6'0"S



115°9'0"E

115°12'0"E

115°15'0"E



115°18'0"E



1:65,000

Projection: GDA2020

Legend

-  Local Government Authorities
-  CPS Areas applied to clear

Roads

-  Main



Government of Western Australia
Department of Water and Environmental Regulation