


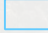
115°42.000'E 115°48.000'E 115°54.000'E 116°0.000'E 116°6.000'E 116°12.000'E 116°18.000'E

31°54.000'S
32°0.000'S
32°6.000'S
32°12.000'S
32°18.000'S
32°24.000'S
32°30.000'S
32°36.000'S
32°42.000'S
32°48.000'S


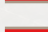

31°54.000'S
32°0.000'S
32°6.000'S
32°12.000'S
32°18.000'S
32°24.000'S
32°30.000'S
32°36.000'S
32°42.000'S
32°48.000'S

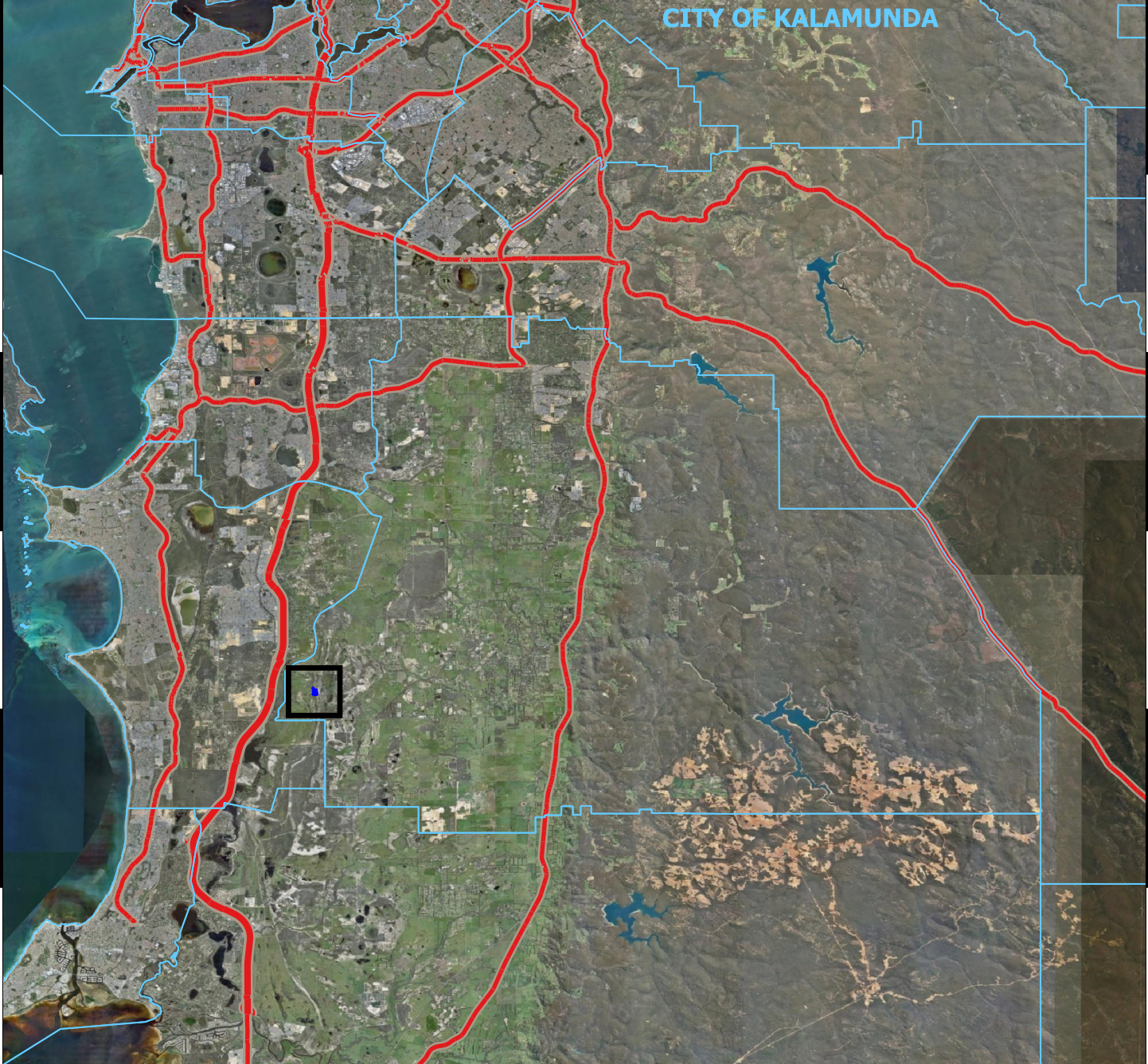


LEGEND

-  CPS Areas Applied to Clear
-  Local Government Authorities (LGATE-233)

Roads (LGATE-012)
Road Classification

-  Freeway
-  National Highway
-  State Highway



CITY OF KALAMUNDA

SHIRE OF MURRAY



CPS 10922/2 - Context Map



Date Created: 11/05/2026 Authored by: NVR
 Version No. 1 Reviewed by: NVR

0 5.4 11 16 km

Project: CPS 10922/2
 Information Classification: **OFFICIAL**
 Sources - The author acknowledges the datasets used in the production of this map and their custodians, as referenced in the Legend above.

Scale: 1:239850
 Spatial Reference: GDA2020



115°42.000'E 115°48.000'E 115°54.000'E 116°0.000'E 116°6.000'E 116°12.000'E 116°18.000'E