

CPS 10940/1 - Map 19

119°34'46"E

119°34'49"E

119°34'52"E

119°34'56"E

20°20'41"S

20°20'45"S

20°20'48"S

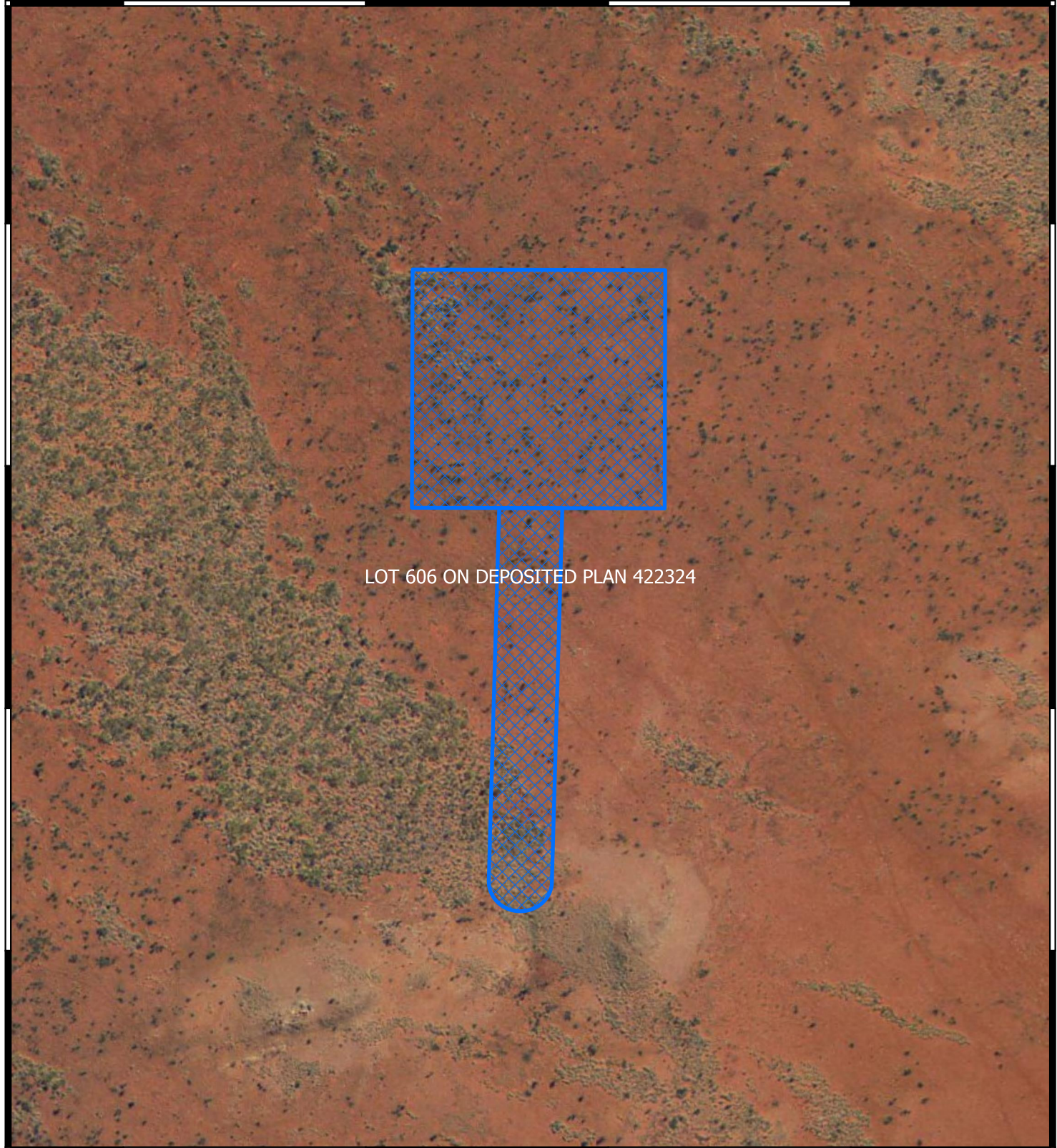
20°20'51"S

20°20'41"S

20°20'45"S

20°20'48"S

20°20'51"S



LOT 606 ON DEPOSITED PLAN 422324



119°34'46"E

119°34'49"E

119°34'52"E

119°34'56"E

LEGEND

-  CPS areas applied to clear
-  Land Tenure (LGATE_226) - SLIP



0 25 50 75 m

1:1,755
Projection:



Government of Western Australia
Department of Water and Environmental Regulation



PERTH