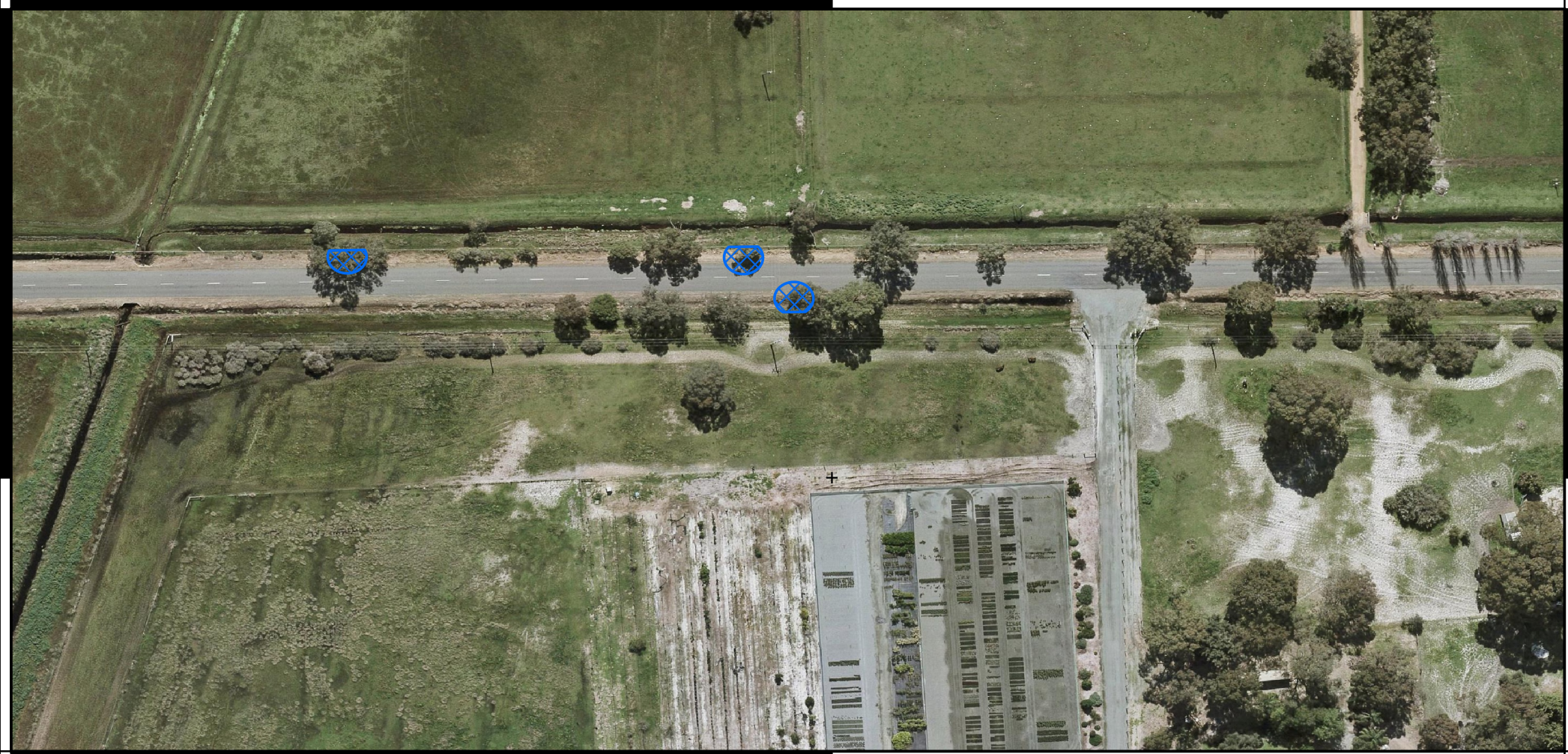


# CPS 10945/1 - Map A

115°53'42"E

32°21'54"S



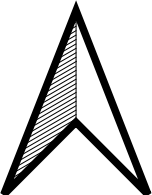
32°21'54"S

115°53'42"E

### Legend

- CPS areas applied to clear
- Land Tenure (LGATE\_226) - SLIP
- Local Government Authorities

- Roads**
- Main
  - Minor



20 0 20 40 m

Projection: GDA2020

1:1,100



Government of Western Australia  
Department of Water and Environmental Regulation