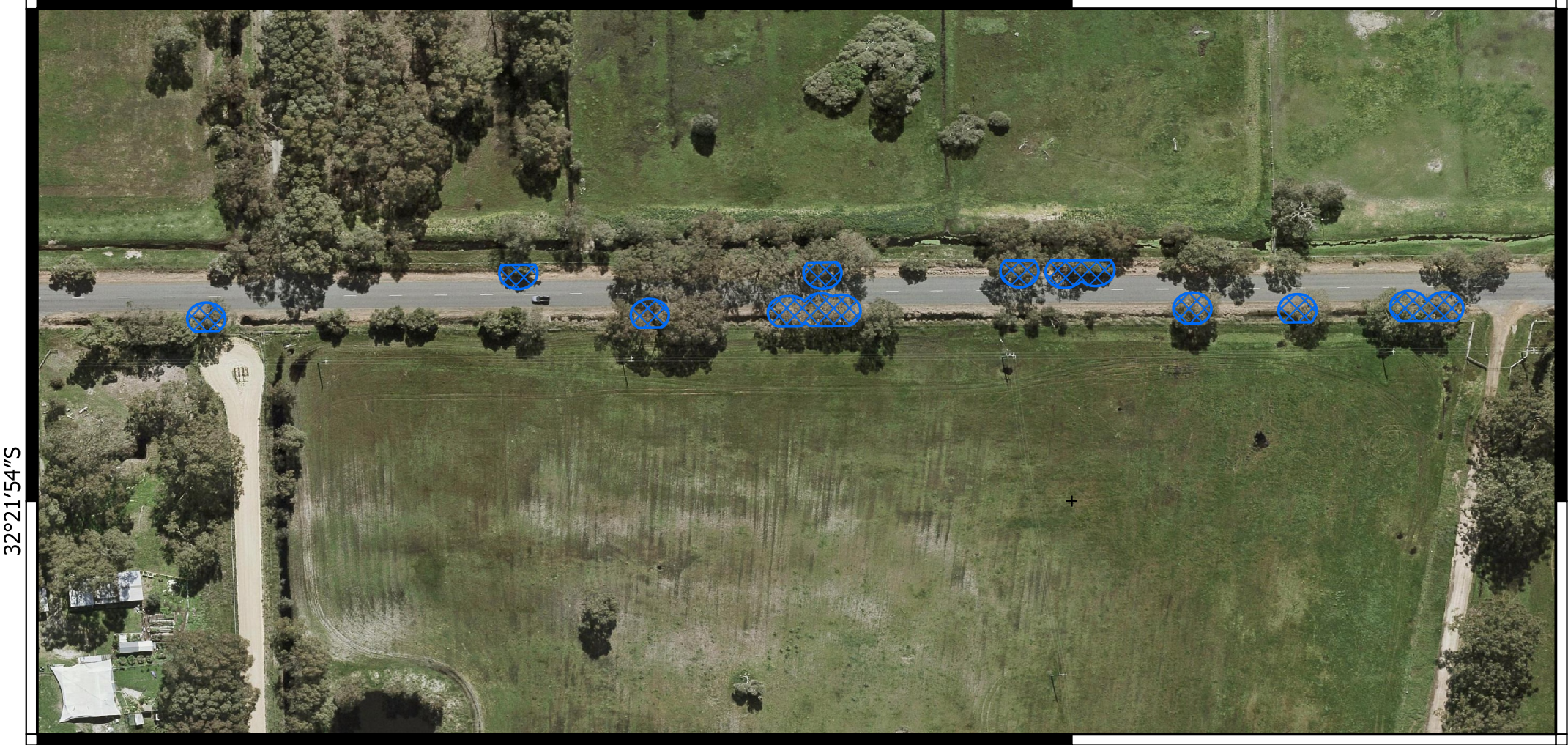


# CPS 10945/1 - Map B

115°54'0"E

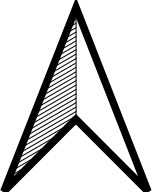


115°54'0"E

### Legend

- CPS areas applied to clear
- Land Tenure (LGATE\_226) - SLIP
- Local Government Authorities

- Roads**
- Main
  - Minor



Projection: GDA2020

1:1,100



Government of Western Australia  
Department of Water and Environmental Regulation