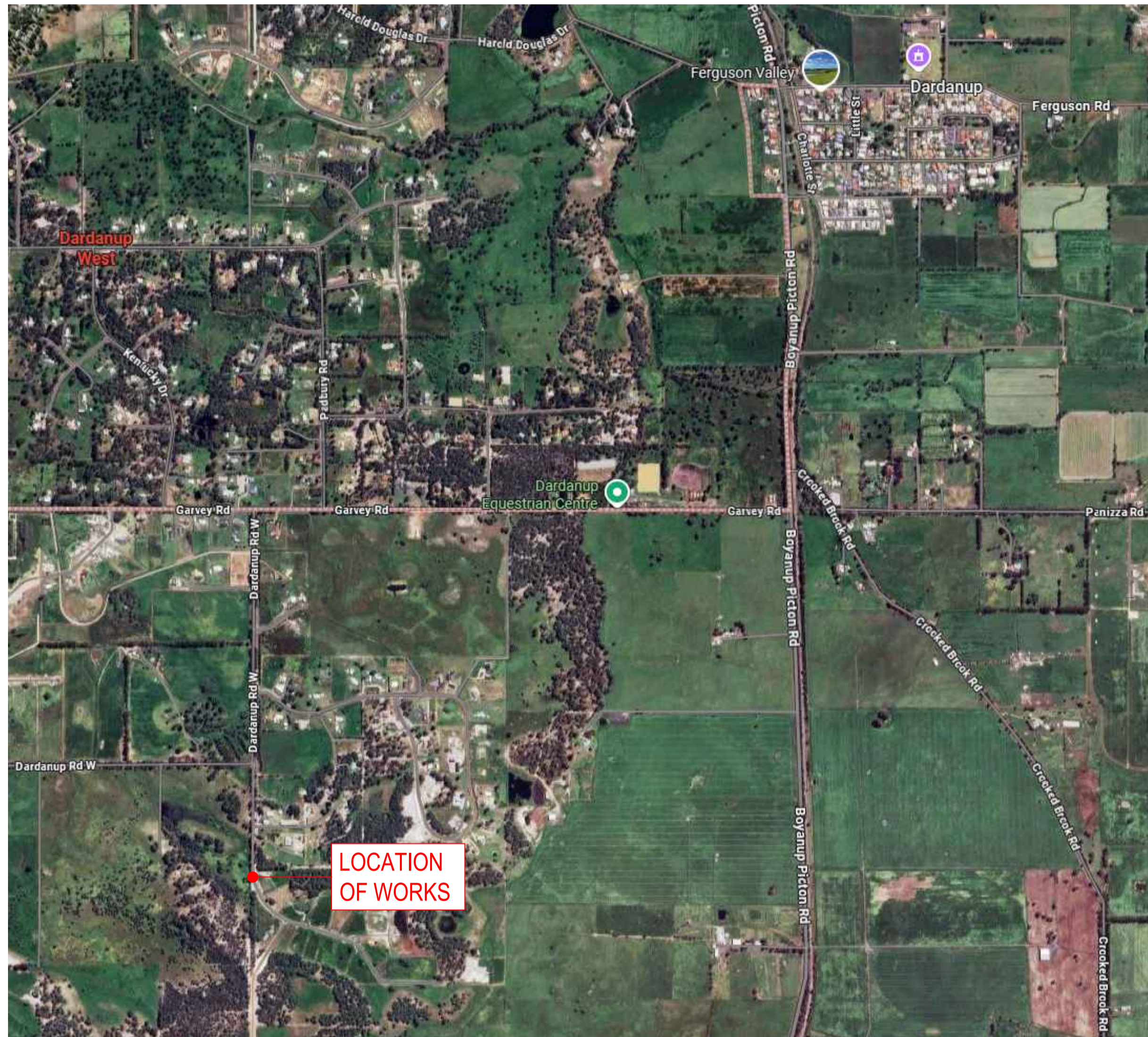




OVERSBY CONSULTING PTD LTD  
brendan@oversbyconsulting.com.au  
PH: 0447 614 411

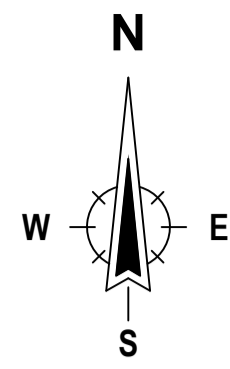


### DRAWING INDEX :

B21049 L-001	CURRENT CONDITIONS PLAN 1 OF 2 (NORTHERN PORTION)
B21049 L-002	CURRENT CONDITIONS PLAN 2 OF 2 (SOUTHERN PORTION)
B21049 L-003	PLANTING PLAN 1 OF 2 (NORTHERN PORTION)
B21049 L-004	PLANTING PLAN 2 OF 2 (SOUTHERN PORTION)
B21049 L-005	IMPLEMENTATION PLAN
B21049 L-006	MANAGEMENT PLAN

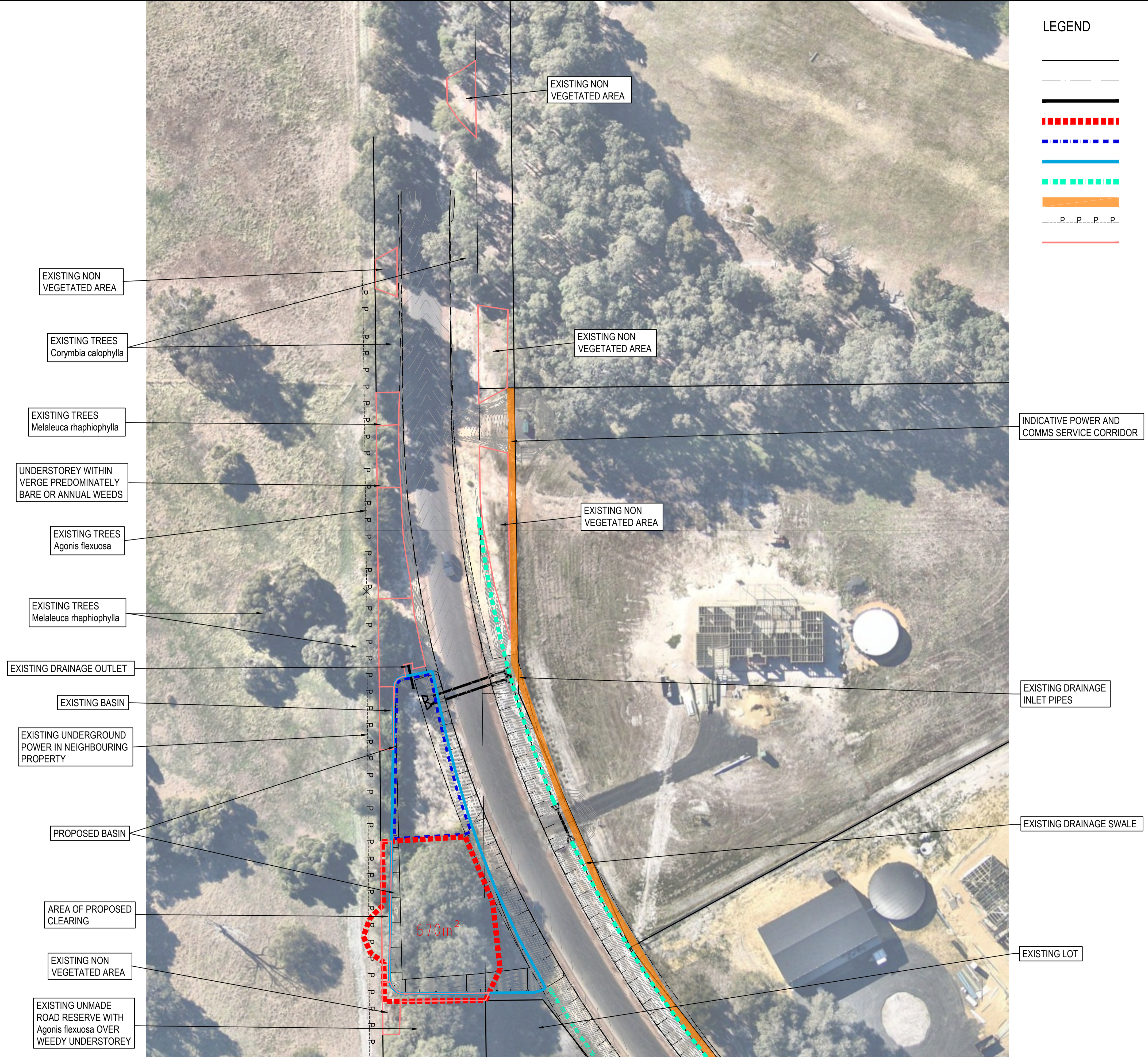
# ALLESAC PTY LTD

## REVEGETATION PLAN FOR SAND PITS ROAD CLEARING OFFSET ISSUE FOR APPROVAL



**LEGEND**

- CADASTRE
- CONTOURS
- DRAINAGE PIPES
- PROPOSED CLEARING AREA
- EXISTING BASIN
- PROPOSED BASIN
- DRAINAGE SWALE BASIN
- SERVICE CORRIDOR
- EXISTING POWER
- ADDITIONAL NEW AREAS FOR REVEGETATION



REV	DATE	ISSUE DESCRIPTION	DRAWN	DESIGN	CHECK
B	11/5/26	ISSUED FOR FINAL APPROVAL	KJB	BO	BO
A	20/8/25	ISSUED FOR APPROVAL	KJB	BO	BO

STATUS  
**PRELIMINARY**  
**NOT FOR CONSTRUCTION**

APPROVED

SCALE  
  
 SCALE 1:400

© COPYRIGHT  
 This document and the copyright contained in this document is the property of Oversby Consulting and must not be used, copied, reproduced, modified, adapted or developed wholly or in part without the prior written consent of Oversby Consulting.

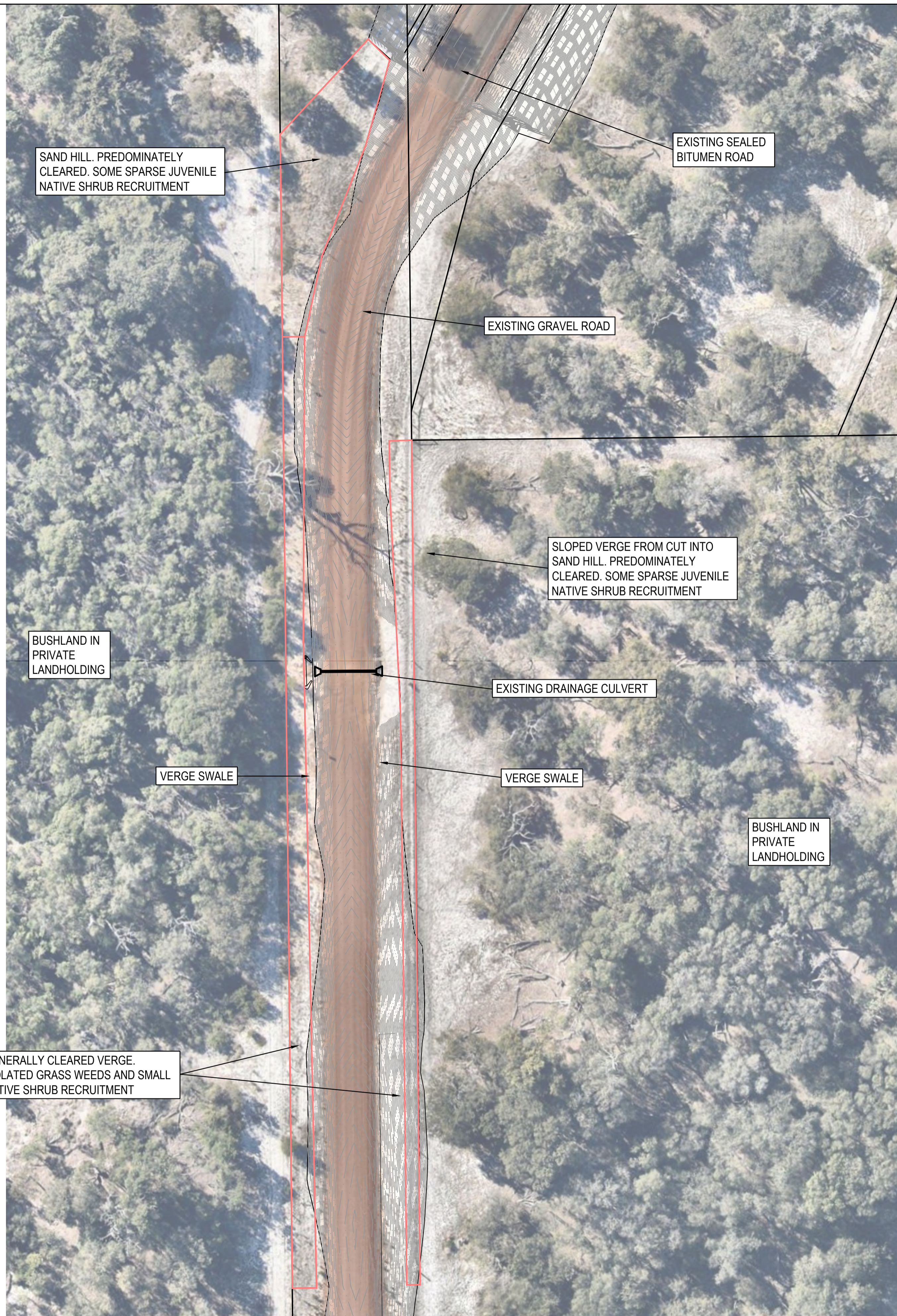
CLIENT  
**ALLESAC PTY LTD**

DISCLAIMER  
 ALL DIMENSIONS TO BE CHECKED ON SITE BY CONTRACTOR PRIOR TO CONSTRUCTION. USE WRITTEN DIMENSIONS ONLY. DO NOT SCALE. NOT FOR CONSTRUCTION UNLESS STAMPED BY CERTIFYING AUTHORITY



PROJECT  
**REVEGETATION WORKS FOR SAND PITS ROAD CLEARING OFFSET**

DRAWING TITLE		
<b>CURRENT CONDITIONS 1 OF 2 NORTHERN PORTION</b>		
PROJECT No.	DRAWING No.	REVISION
B21049	L-001	B



**LEGEND**

- CADASTRE
- CONTOURS
- DRAINAGE PIPES
- ADDITIONAL NEW AREAS FOR REVEGETATION

REV	DATE	ISSUE DESCRIPTION	DRAWN	DESIGN	CHECK
B	11/5/26	ISSUED FOR FINAL APPROVAL	KJB	BO	BO
A	20/8/25	ISSUED FOR APPROVAL	KJB	BO	BO

**PRELIMINARY  
NOT FOR CONSTRUCTION**

APPROVED

SCALE

SCALE 1:400

© COPYRIGHT  
This document and the copyright contained in this document is the property of Oversby Consulting and must not be used, copied, reproduced, modified, adapted or developed wholly or in part without the prior written consent of Oversby Consulting.

CLIENT

ALLESAC PTY LTD

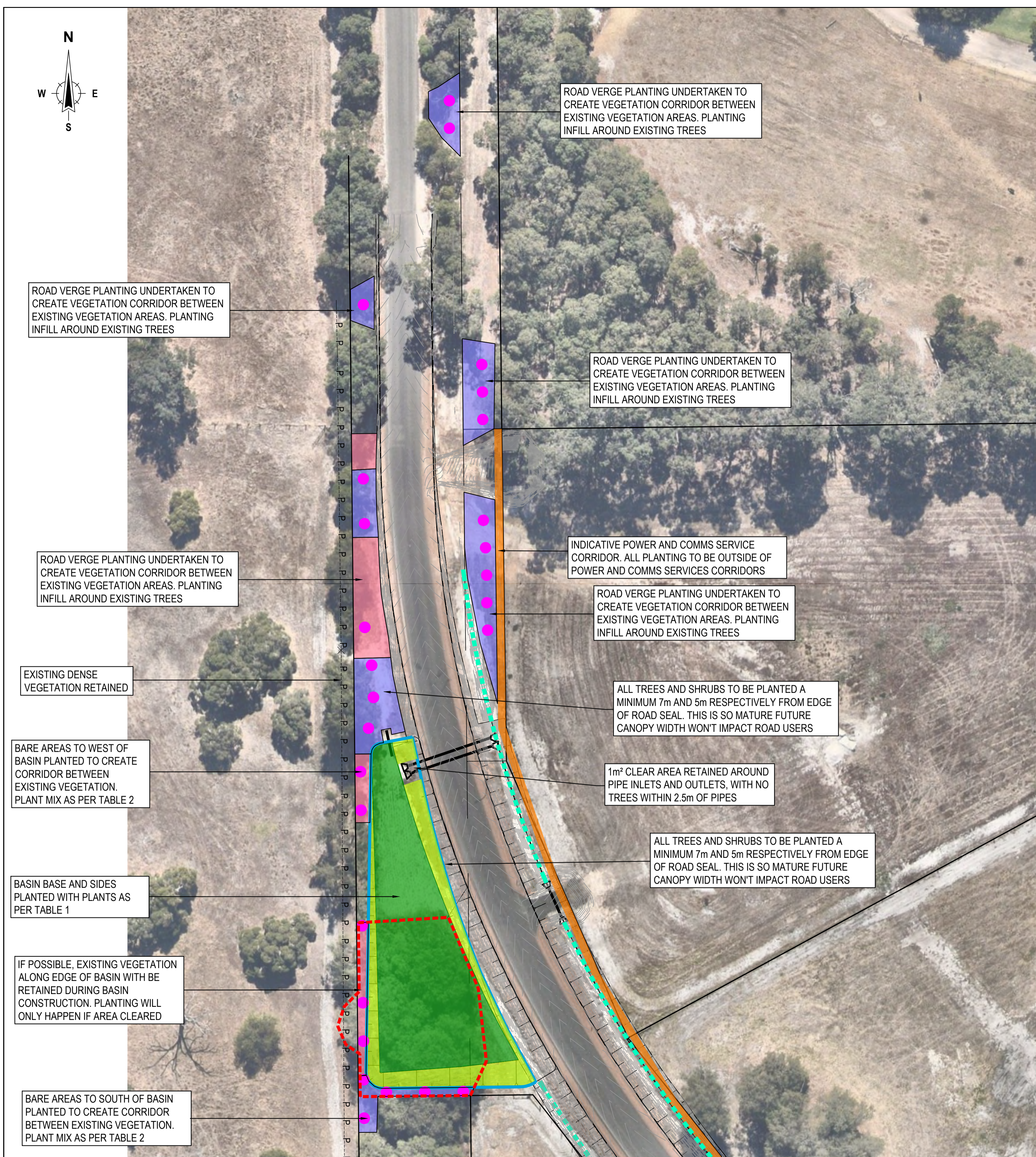
DISCLAIMER  
ALL DIMENSIONS TO BE CHECKED ON SITE BY CONTRACTOR PRIOR TO CONSTRUCTION. USE WRITTEN DIMENSIONS ONLY. DO NOT SCALE. NOT FOR CONSTRUCTION UNLESS STAMPED BY CERTIFYING AUTHORITY



PROJECT

REVEGETATION WORKS FOR SAND PITS ROAD CLEARING OFFSET

DRAWING TITLE		
CURRENT CONDITIONS 2 OF 2 SOUTHERN PORTION		
PROJECT No.	DRAWING No.	REVISION
B21049	L-002	B



**LEGEND**

- CADASTRE
- - - - - CONTOURS
- DRAINAGE PIPES
- - - - - PROPOSED CLEARING AREA
- PROPOSED BASIN
- - - - - DRAINAGE SWALE BASIN
- SERVICE CORRIDOR
- - - - - EXISTING POWER
- BASIN BASE: PLANT MIX A
- BASIN SIDE: PLANT MIX B
- ROAD VERGE: PLANT MIX C
- ROAD VERGE: PLANT MIX D
- PROPOSED TREE

**Table 1 Basin Planting**

Basin area – base. (785m <sup>2</sup> ) Plant mix A				
Species	Height (m)	Density	Total numbers	Comments
Sedges & Rushes		Mix of species at 2 plants per m2 (evenly mixed)		
Carex appressa		10%	110	
Juncus subsecundus	0.5	30%	550	
Juncus pallidus	1	30%	550	
Machaerina juncea	0.5	10%	120	
Meeboldina scariosa	1	10%	120	
Bolbschoenus caldwellii	0.5	10%	120	
Sub total			1570	
Shrubs		1 plant every 4m2 evenly mixed		
Melaleuca viminea	3	30%	60	
Melaleuca lateritia	1.5	20%	45	
Melaleuca raphiophylla	8 - 10	40%	90	
Sub total			195	
Basin area – sides (299m <sup>2</sup> ) Plant mix B				
Sedges & Rushes		mix of species at 2 plants per m2 (evenly mixed)		
Juncus subsecundus	0.5	45%	280	Plant on lower half of basin side only
Juncus pallidus	1	45%	280	
Meeboldina scariosa	1	10%	40	
Sub total			600	
Shrubs		1 plant every 3m2 evenly mixed, generally planted in zig zag pattern across the slope		
Melaleuca lateritia	1.5	10%	10	
Melaleuca raphiophylla	8 - 10	10%	20	Plant on lower half of basin side only
Melaleuca incana	3	10%	10	
Agonis flexuosa	8 - 10	60%	60	Plant on upper half of basin side only
Sub total			100	
Total Basin plants			2465	

**Table 2 Road Verge Planting - Northern Portion**

Dry Verge area. (Length =101m approx . Area = 573m <sup>2</sup> ) - Plant mix C			
Species	Height (m)	Density	Total numbers
<b>Trees</b>			
Agonis flexuosa	8 - 10	1 plant every 5 liner m where no existing trees present. See Fig L003 for indicative locations.	15
Corymbia calophylla	15-20		6
Sub total			21
<b>Shrubs</b>			
Acacia microbotrya	5 - 7	1 plant every 6m2, where no existing shrubs present.	20
Acacia saligna	4 to 6		25
Kunzea glabrescens	3 to 4		50
Sub total			95
Wet Verge area (233m <sup>2</sup> ) - Plant mix D			
Species	Height (m)	Density	Total numbers
<b>Trees</b>			
Melaleuca raphiophylla	8 - 10	1 plant every 5 liner m where no existing trees present. See Fig L003 for indicative locations.	4
Eucalyptus rudis	1		2
Sub total			6
<b>Shrubs</b>			
Melaleuca viminea	4 - 6	1 plant every 6m2, where no existing shrubs present	20
Melaleuca incana	3		20
Sub total			40
Total Verge plants			135

REV	DATE	ISSUE DESCRIPTION	DRAWN	DESIGN	CHECK
B	11/5/26	ISSUED FOR FINAL APPROVAL	KJB	BO	BO
A	20/8/25	ISSUED FOR APPROVAL	KJB	BO	BO

STATUS: **PRELIMINARY**  
NOT FOR CONSTRUCTION

APPROVED: \_\_\_\_\_

SCALE: 1:400

© COPYRIGHT  
This document and the copyright contained in this document is the property of Oversby Consulting and must not be used, copied, reproduced, modified, adapted or developed wholly or in part without the prior written consent of Oversby Consulting.

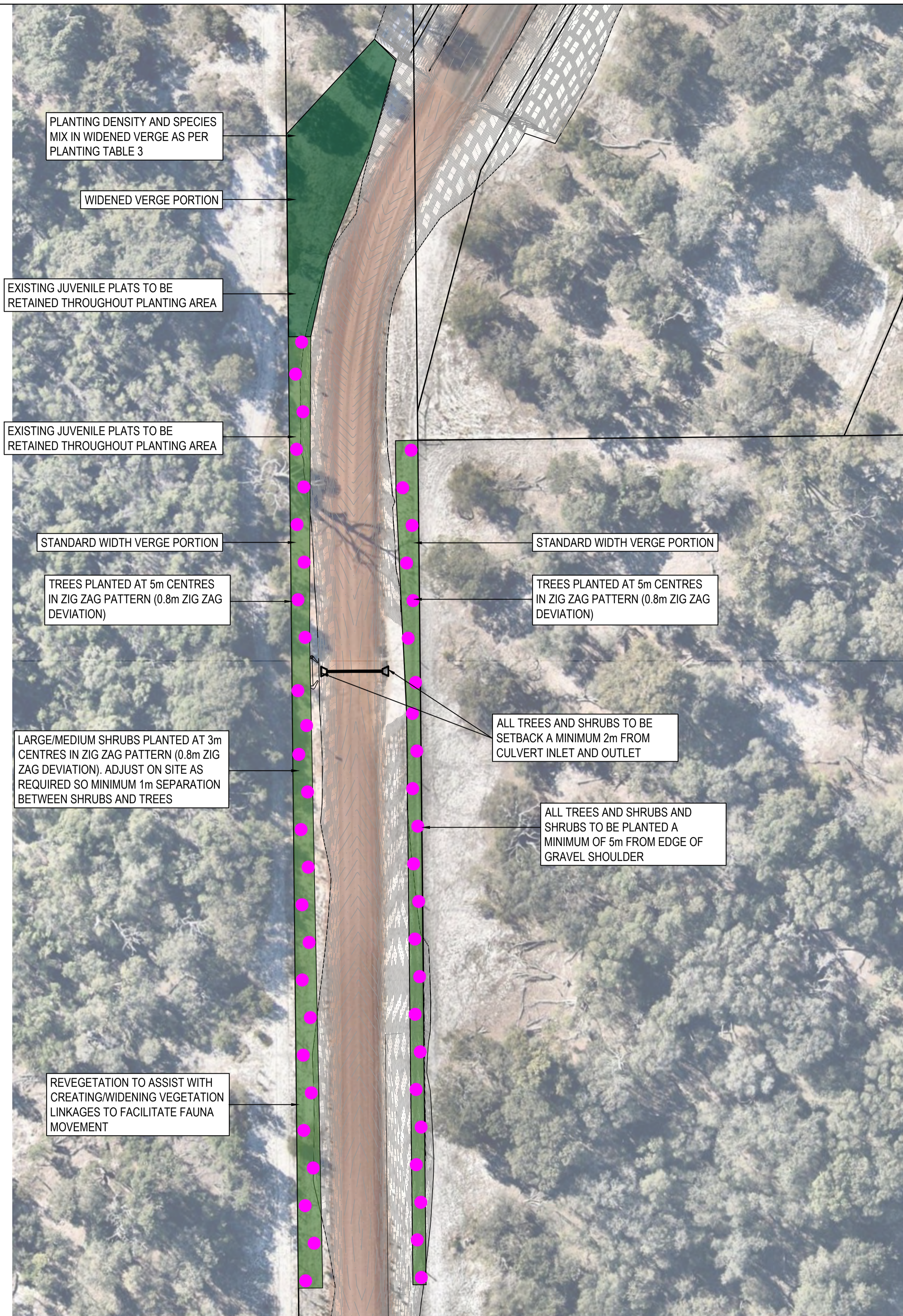
CLIENT: ALLESAC PTY LTD

DISCLAIMER  
ALL DIMENSIONS TO BE CHECKED ON SITE BY CONTRACTOR PRIOR TO CONSTRUCTION. USE WRITTEN DIMENSIONS ONLY. DO NOT SCALE. NOT FOR CONSTRUCTION UNLESS STAMPED BY CERTIFYING AUTHORITY



PROJECT: REVEGETATION WORKS FOR SAND PITS ROAD CLEARING OFFSET

DRAWING TITLE: PLANTING PLAN 1 OF 2 NORTHERN PORTION		
PROJECT No.	DRAWING No.	REVISION
B21049	L-003	B



**LEGEND**

- CADASTRE
- CONTOURS
- DRAINAGE PIPES
- PROPOSED TREES IN STANDARD VERGE AREA
- ROAD VERGE: PLANT MIX E
- ROAD VERGE: PLANT MIX F

**Table 3 Road Verge Planting - Southern Portion - Standard Verge**

Dry Verge area - standard verge. (Length = 330m approx. Area = 829m <sup>2</sup> ) - Plant Mix E			
Species	Height (m)		Total numbers
<b>Trees</b>			
Agonis flexuosa	8 - 10	1 plant every 6 liner m. See Fig L004 for indicative locations.	29
Corymbia calophylla	15-20		12
Eucalyptus marginata	20 -30		8
<b>Sub total</b>			<b>49</b>
<b>Shrubs</b>			
Acacia saligna	4 to 6	2 plants between each tree.	45
Kunzea glabrescens	3 to 4		65
<b>Sub total</b>			<b>110</b>
<b>Total Southern Verge plants</b>			<b>159</b>

**Table 4 Road Verge Planting - Southern Portion - Widened Verge**

Dry Verge area - widened verge. (399m <sup>2</sup> ) - Plant Mix F			
Species	Height (m)		Total numbers
<b>Trees</b>			
Agonis flexuosa	8 - 10	1 plant/10m <sup>2</sup>	25
Corymbia calophylla	15-20		10
Eucalyptus marginata	20 -30		5
<b>Sub total</b>			<b>40</b>
<b>Shrubs</b>			
Acacia saligna	4 to 6	1 plant/6m <sup>2</sup>	35
Kunzea glabrescens	3 to 4		31
Allocasuarina humilis	0.5 -2	1 plant/4m <sup>2</sup>	50
Acacia pulchella	1 - 1.5		50
<b>Sub total</b>			<b>166</b>
<b>Total Southern Widened Verge plants</b>			<b>206</b>

REV	DATE	ISSUE DESCRIPTION	DRAWN	DESIGN	CHECK
B	11/5/26	ISSUED FOR FINAL APPROVAL	KJB	BO	BO
A	20/8/25	ISSUED FOR APPROVAL	KJB	BO	BO

STATUS  
**PRELIMINARY**  
**NOT FOR CONSTRUCTION**

APPROVED

SCALE  
0 4 8 12 16 20  
SCALE 1:400

© COPYRIGHT  
This document and the copyright contained in this document is the property of Oversby Consulting and must not be used, copied, reproduced, modified, adapted or developed wholly or in part without the prior written consent of Oversby Consulting.

CLIENT  
ALLESAC PTY LTD

DISCLAIMER  
ALL DIMENSIONS TO BE CHECKED ON SITE BY CONTRACTOR PRIOR TO CONSTRUCTION. USE WRITTEN DIMENSIONS ONLY. DO NOT SCALE. NOT FOR CONSTRUCTION UNLESS STAMPED BY CERTIFYING AUTHORITY



PROJECT  
REVEGETATION WORKS FOR SAND PITS ROAD CLEARING OFFSET

DRAWING TITLE PLANTING PLAN 2 OF 2 SOUTHERN PORTION		
PROJECT No. B21049	DRAWING No. L-004	REVISION B

Table 5: Implementation Schedule for Rehabilitation Management Actions

Phase	Approximate Timeframe	Basins	Verge/ unmade road reserve	General
Pre planting Works	As part of Civil works	Install clean sand across base. Rip base. Install topsoil to basin sides taken from cleared area (to utilise seed bank)	Undertake relevant weed control.Undertake fine earthworking if any erosion.	
	At completion of Revelevant Civil works	Undertake weed control across basin area as required. Undertake fine earthworking if any erosion.	Undertake relevant weed control.Undertake fine earthworking if any erosion.	
	Completion of civil works to June 2026	Undertake weed control across basin area as required. Care to be taken to avoid killing of any germinating native seedlings that have self germinated. Undertake fine earthworking if any erosion.	Undertake relevant weed control.Undertake fine earthworking if any erosion.	
	June - July 2026	Undertake final weed control across basin area. Care to be taken to avoid killing of any germinating native seedlings that have self germinated. Undertake fine earthworking if any erosion.	Undertake final weed control area. Care to be taken to avoid killing of any germinating native seedlings that have self germinated.	
Planting	Jul-26	Plant basin base and sides and water in with Seasol solution, once suitable winter weed control achieved.	Plant verge/unmade road reserve and water in with Seasol solution or similar, once suitable winter weed control achieved.	Check and respond to any damage by fauna. Check for any vandalism, erosion/sedimentation,general damage. Repair as required.
Maintenance and Monitoring: Period 1	July - December 2026	Check for any erosion/sedimentation and repair as required. Remove weeds as required. Irrigate with tanker as required.	Check for any erosion/sedimentation and repair as required. Remove weeds as required. Irrigate with tanker as required.	Check and respond to any damage by fauna. Check for any vandalism, erosion/sedimentation,general damage. Repair as required.
Period 2	January - April 2027	Check for any erosion/sedimentation and repair as required. Remove weeds as required. Irrigate with tanker as required. Check if infill plants are required and reorder accordingly.	Check for any erosion/sedimentation and repair as required. Remove weeds as required. Irrigate with tanker as required.Check if infill plants are required and reorder accordingly.	Check and respond to any damage by fauna. Check for any vandalism, erosion/sedimentation,general damage. Repair as required.
Period 3	May - August 2027	Check for any erosion/sedimentation and repair as required. Remove weeds as required. . Infill base and sides as required with suitable species.	Check for any erosion/sedimentation and repair as required. Remove weeds as required. Infill any gaps in verge road reserve areas with suitable species.	Check and respond to any damage by fauna. Check for any vandalism, erosion/sedimentation,general damage. Repair as required.
Period 4	September - December 2027	Check for any erosion/sedimentation and repair as required. Remove weeds as required. Irrigate with tanker as required.	Check for any erosion/sedimentation and repair as required. Remove weeds as required. Irrigate with tanker as required.Check if infill plants are required and reorder accordingly.	Check and respond to any damage by fauna. Check for any vandalism, erosion/sedimentation,general damage. Repair as required.
Period 5	January - April 2028	Check for any erosion/sedimentation and repair as required. Remove weeds as required. Irrigate with tanker as required. Check if infill plants are required and reorder accordingly.	Check for any erosion/sedimentation and repair as required. Remove weeds as required. Irrigate with tanker as required.Check if infill plants are required and reorder accordingly.	Check and respond to any damage by fauna. Check for any vandalism, erosion/sedimentation,general damage. Repair as required.
Period 6	May - June 2028	Check for any erosion/sedimentation and repair as required. Remove weeds as required. Infill base and sides as required with suitable species.	Check for any erosion/sedimentation and repair as required. Remove weeds as required. Infill any gaps in verge road reserve areas with suitable species.	Check and respond to any damage by fauna. Check for any vandalism, erosion/sedimentation,general damage. Repair as required.
Handover	Jul-28	Undertake handover process with Shire, including any final rectification works .		
Works byShire after completion of 2 year monitoring and maintenance period	Ongoing	. Prune back plants as required. Check for any erosion/sedimentation and repair as required. Remove weeds as required. Infill replant	Check for any erosion/sedimentation and repair as required. Remove weeds as required. Infill replant	Check and respond to any damage by fauna. Check for any vandalism, erosion/sedimentation,general damage. Repair as required.

Note: Weed control is considered adequate if the weeds are in numbers low enough that they are currently not affecting the success of the revegetation/ existing native vegetation growth and it can be reasonably expected that they won't in the foreseeable future. For this to be the case it is assumed that weeds will cover less than 5% of the area on average and no declared weeds are present.

				<b>PRELIMINARY</b> <b>NOT FOR CONSTRUCTION</b>			SCALE _____			CLIENT ALLESAC PTY LTD			PROJECT REVEGETATION WORKS FOR SAND PITS ROAD CLEARING OFFSET			DRAWING TITLE IMPLEMENTATION PLAN					
				APPROVED _____			© COPYRIGHT This document and the copyright contained in this document is the property of Oversby Consulting and must not be used, copied, reproduced, modified, adapted or developed wholly or in part without the prior written consent of Oversby Consulting.			DISCLAIMER ALL DIMENSIONS TO BE CHECKED ON SITE BY CONTRACTOR PRIOR TO CONSTRUCTION. USE WRITTEN DIMENSIONS ONLY. DO NOT SCALE. NOT FOR CONSTRUCTION UNLESS STAMPED BY CERTIFYING AUTHORITY			PROJECT No. B21049			DRAWING No. L-005			REVISION B		
REV	DATE	ISSUE DESCRIPTION			DRAWN	DESIGN	CHECK														
B	11/5/26	ISSUED FOR FINAL APPROVAL			KJB	BO	BO														
A	20/8/25	ISSUED FOR APPROVAL			KJB	BO	BO														



## 1. EXECUTIVE SUMMARY

### 1.1 GENERAL

This Revegetation Plan (the Plan) has been produced in response to the proposed clearing within Sandpits Road, Crooked Brook. The clearing is to facilitate the necessary expansion of the drainage basin. The revegetation area covers the proposed clearing area as well as the rest of the drainage basin and surrounding road reserve. It also includes additional revegetation to the south, which is linked by existing vegetation. For convenience, the non-basin areas are referred to as verge areas within this Plan. The revegetation assists with establishing a link between existing areas of vegetation to the north and south of the proposed clearing area.

This Plan sets out the proposed works associated with planting and maintenance in these areas. It details the types of plants, site preparation and ongoing maintenance associated with these areas. It is in keeping with the civil works outlined in the approved Engineering Drawings.

As such, this Plan should be read in conjunction with the approved Engineering Drawings, where more detailed information is required, especially associated with the creation of the drainage infrastructure.

### 1.2 CLEARING SUMMARY

The proposed clearing covers an area of 0.074hectares. A Clearing Application has been submitted to the Department of Waste and Environmental Regulation (DWER) for assessment. The Clearing Application has been accepted, with the DWER reference being CPS 11092/1.

DWER have request more information in relation to proposed works to offset the clearing and the potential impact on Western Ringtail Possums, due to the noted presence of this species. Further information on this can be found in the Targeted Western Ringtail Possum Survey, Sand Pits Road Drainage Swale (Western Environmental 2024).

This Plan outlines the offset revegetation works that are proposed to be undertaken in response to the proposed clearing. The total revegetation area covers approximately 0.288 hectares.

## 2.0 MANAGEMENT COMMITMENTS

### 2.1 OBJECTIVES

The objective of the Plan is to detail the works and management practices that are to be undertaken across the site in relation to revegetation. These practices will;

- Provide new native vegetation within the proposed clearing area
- Provide new areas of native vegetation to assist with fauna linkages

- complement the stormwater design, including treating stormwater for pollutants and managing flood events

### 2.2 STRATEGY OVERVIEW

The overarching strategies that will be used to achieve the above objectives are as follows:

- Utilise endemic wetland species as part of the basin and verge planting to increase fauna habitat and treat stormwater
- Control declared and invasive weeds;
- Monitoring and maintaining the site to ensure the completion criteria are achieved throughout and at the end of the maintenance period.

## 3 DETAILED WORKS

### 3.1 Initial Weed Control

All weed species are to be controlled within the basin and verge area. The weed control will include:

- All declared pest species being eradicated prior to planting and throughout the entire 2 year maintenance period; and
- Weed cover of remaining environmental weed species being maintained below 5% for the 2 year maintenance period within the revegetation areas and for a 1m buffer into the surrounding areas or boundary of the reserve.

Weed control shall be achieved by a combination of chemical herbicides and physical removal, as appropriate.

Herbicides shall be selected for the target species, taking into account the surrounding environment and the constraints this may present.

In the basin areas, a waterway sensitive glyphosate herbicide will be used to remove kikuyu, clumping grasses and broadleaf annual plants prior to planting. Follow up weed control will then be undertaken after opening autumn rains, with further control as required.

Fusilade or similar will be used to control Couch and other grasses once the areas is planted. This would happen during periods of active growth for the target species including between October and December after rainfall.

Arum Lily control, if found, will be by spot sprayed using Chlorsulfuron or Metsulfuron, with spraying between July and November.

When surface water is present in the basin, only herbicides considered safe for use near water will be applied, with no application within areas of surface water. Alternative control methods such as hand removal will also be utilised when water is present.

Herbicide spraying will only be conducted by qualified operators. This is to include:

- appropriately qualified and licensed in herbicide application;
- that have demonstrated experience in the ability to identify, and distinguish between native and weed species;
- familiar with the most appropriate control measures, timing, herbicides, and application rates for the target species.
- hold a current Herbicide Operators licence and be endorsed to supply and apply herbicides for reward
- be able to demonstrate an understanding of natural environmental and ecosystem issues and considerations
- be fully aware of relevant State and Federal legislation with regard to protected species, environmental harm, pollution and other issues pertinent to the carrying out of chemical weed control in natural areas
- all chemical agents are to be used strictly in accordance with the manufacturer's recommendations and in accordance with licensing provisions for that chemical
- the contractor shall effect control of the target weed species at a level of not less than 95% kill

The basin and verge revegetation sites shall be free of live weeds before planting commences. Weed control activities should commence as soon as civil earthworks are completed. The growth periods of the weed species observed on site extend over the entire year and therefore an extensive pre and post installation weed control program is required. Post-installation weed control shall be undertaken at least each spring and autumn. Summer control may also be required to target some summer active species, while winter spraying may be utilised to target late germinating plants.

### 3.2 Additional Earthworks

The following works are in addition to initial shaping of the stormwater network as part of the civil works.

#### 3.2.1 Basin Sand base

Clean, weed free sand is to be placed 100mm deep across the base of the basins. This is to assist with plant establishment.

#### 3.2.2 Topsoil spreading

Topsoil from the area of proposed clearing is to be spread 100mm deep on the basin banks (inside and outside). Any leftover topsoil to be spread on bare areas of verge planting. This is to encourage germination of the insitu seed bank.

#### 3.2.2 Basin Ripping/Planting holes

Rip lines, a minimum of 400mm deep, are to be placed 500mm apart to assist with plant root establishment within the basin and away from existing trees within the verge areas. Rip lines are to be set a minimum of 2m out from any existing tree canopy drip line Where rip lines cannot be installed due to available space for machinery or existing trees, planting holes are to be created with an auger to a minimum of 400mm deep. Planting holes may be installed between rip lines to allow for denser planting of sedges and rushes within the basin, if the soil is determined to be compacted post construction.

### 3.3 Plant establishment

#### 3.3.1 Basins

Planting of the basins will be undertaken only when ground conditions are conducive to promoting long-term seedling survival. Typically, this will be in mid May to mid June, subject to soil moisture and adequate weed control. Planting will generally be earlier than upland planting, as the basins will likely be wetter than the surrounding ground. A watering at the time of planting, with a Seasol solution, is to be undertaken to assist with initial establishment.

All plants will be cell and tube stock unless otherwise specified. Planting will be by hand tree planters into the dug holes and riplines.

A breakdown of the plants to be installed can be seen in Table 1.

#### 3.3.2 Verge areas

Planting of the verge areas will be undertaken only when ground conditions are conducive to promoting long-term seedling survival. Typically, this will be in mid June, subject to soil moisture and adequate weed control. A watering at the time of planting, with a Seasol solution, is to be undertaken to assist with initial establishment.

All plants will be cell and tube stock unless otherwise specified. Planting will be by hand tree planters into the dug holes and riplines.

A breakdown of the plants to be installed can be seen in Table 2 -4.

## 4 MONITORING AND MAINTENANCE

A schedule of works including the monitoring and maintenance can be seen in Table 5. The following provides more information on the monitoring and maintenance for each area.

### 4.1 Basins

The focus for monitoring and maintenance will be to make sure that the basin species are establishing and that relevant weeds are controlled. The entire basin areas are to be maintained free of declared plants. All weeds are to be sprayed with selective herbicide where applicable as well as manual removal as appropriate. Weeds higher than 100mm are to be physically removed. Weed coverage should not exceed 5% of the area. Weed control is to be undertaken by operators with a good understanding of the species to be targeted and those which must not be damaged. Weed control is to happen quarterly as a minimum, with potentially further inspection and control throughout winter and spring.

Plant numbers are to be maintained at a minimum of 80% of the original planting density. Should the density be below 80% or if there are area of 2m<sup>2</sup> or greater that are bare, then replanting is to take place in the following planting season.

### 4.2 Verges

The focus for the verge monitoring and maintenance will be to make sure that the planted species are establishing and that relevant weeds are controlled. The revegetated areas are to be maintained free of declared plants. All weeds are to be sprayed with selective herbicide where applicable as well as manual removal as appropriate. Weeds higher than 100mm are to be physically removed. Weed coverage should not exceed 5% of the area. Weed control is to be undertaken by operators with a good understanding of the species to be targeted and those which must not be damaged. Weed control is to happen quarterly as a minimum, with potentially further inspection and control throughout winter and spring.

Plant numbers are to be maintained at a minimum of 80% of the original planting density. Should the density be below 80% or if there are area of 2m<sup>2</sup> or greater that are bare, then replanting is to take place in the following planting season.

### 4.3 Self germination

Care should also be taken during weed control and general maintenance to identify self germinating native species. Self germinating plants are to be encouraged and managed in a similar manner to planted plants

### 4.4 Pest management

Inspection should be undertaken to determine if fauna species are affecting the growth of plants. This may include rabbits, kangaroos, insects or stray stock. Control methods are to be put in place if required to negate grazing and trampling damage and may include alternative fencing type, baiting and insecticides.

### 4.5 General

Any loose rocks or rubbish found within the revegetation area are to be removed.

Any sedimentation and erosion should be reported to the civil team or Shire (depending on timing) for repair.

### 4.6 Irrigation

Irrigation of plants will be on a need basis by tankering. Irrigation will only be to the extent that it enhances survival of the planted vegetation for the first 2 years.

				STATUS <b>PRELIMINARY NOT FOR CONSTRUCTION</b>			SCALE			CLIENT ALLESAC PTY LTD			PROJECT REVEGETATION WORKS FOR SAND PITS ROAD CLEARING OFFSET			DRAWING TITLE MANAGEMENT PLAN					
				APPROVED			© COPYRIGHT This document and the copyright contained in this document is the property of Oversby Consulting and must not be used, copied, reproduced, modified, adapted or developed wholly or in part without the prior written consent of Oversby Consulting.			DISCLAIMER ALL DIMENSIONS TO BE CHECKED ON SITE BY CONTRACTOR PRIOR TO CONSTRUCTION. USE WRITTEN DIMENSIONS ONLY. DO NOT SCALE. NOT FOR CONSTRUCTION UNLESS STAMPED BY CERTIFYING AUTHORITY			PROJECT No. B21049			DRAWING No. L-006			REVISION B		
REV	DATE	ISSUE DESCRIPTION		DRAWN	DESIGN	CHECK															
B	11/5/26	ISSUED FOR FINAL APPROVAL		KJB	BO	BO															
A	20/8/25	ISSUED FOR APPROVAL		KJB	BO	BO															