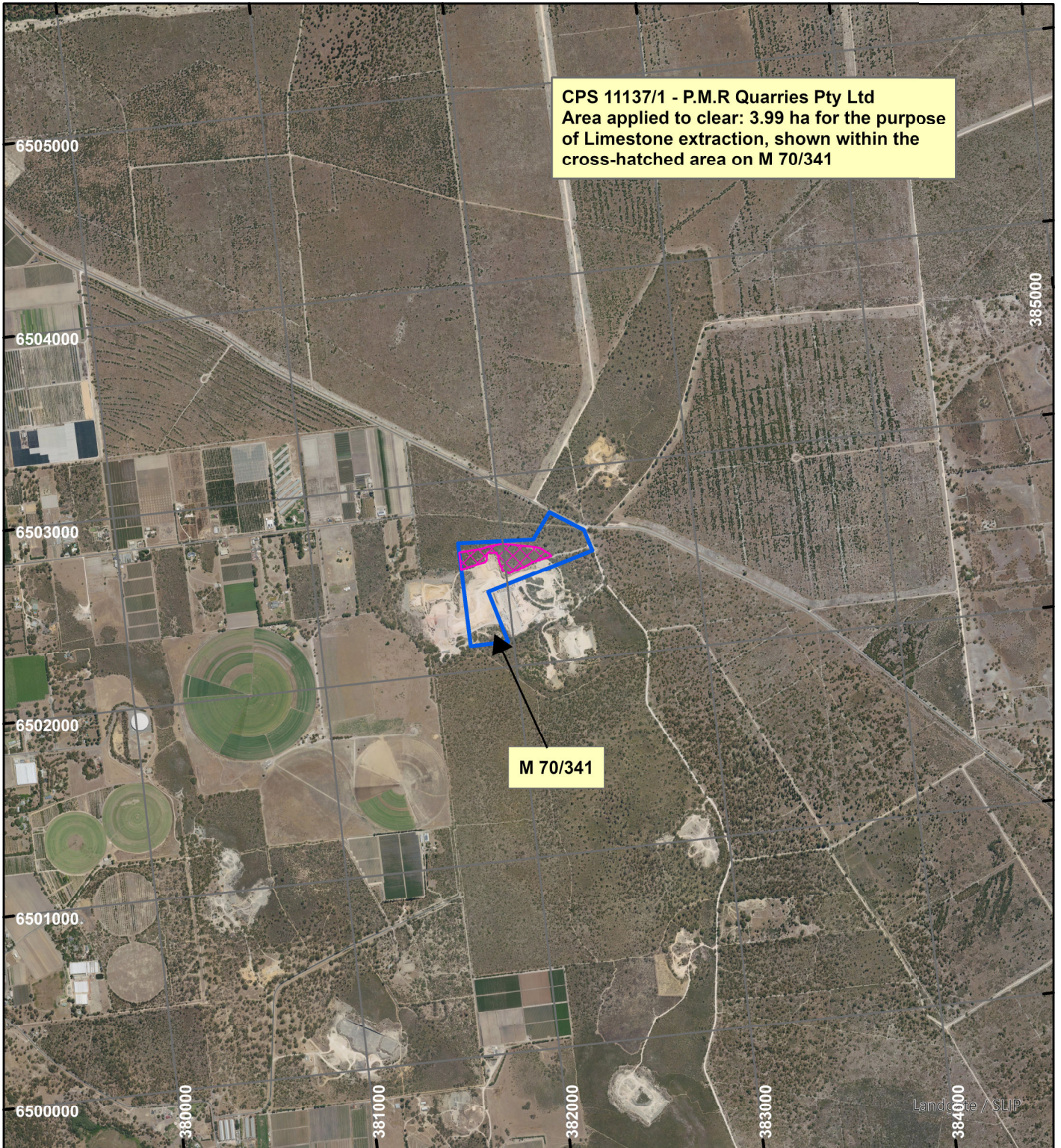


CPS 11137/1 - P.M.R Quarries Pty Ltd

CPS 11137/1 - P.M.R Quarries Pty Ltd
Area applied to clear: 3.99 ha for the purpose
of Limestone extraction, shown within the
cross-hatched area on M 70/341



LEGEND



Clearing Instruments



Mining Tenements



Scale 1:30,000

(Approximate when reproduced at A4)

Geocentric Datum Australia 1994

Note: the data in this map have not been projected. This may result in geometric distortion or measurement inaccuracies.

..... Date

Officer with delegated authority under Section 20 of
the Environmental Protection Act 1986

Information derived from this map should be
confirmed with the data custodian acknowledged
by the agency acronym in the legend.