



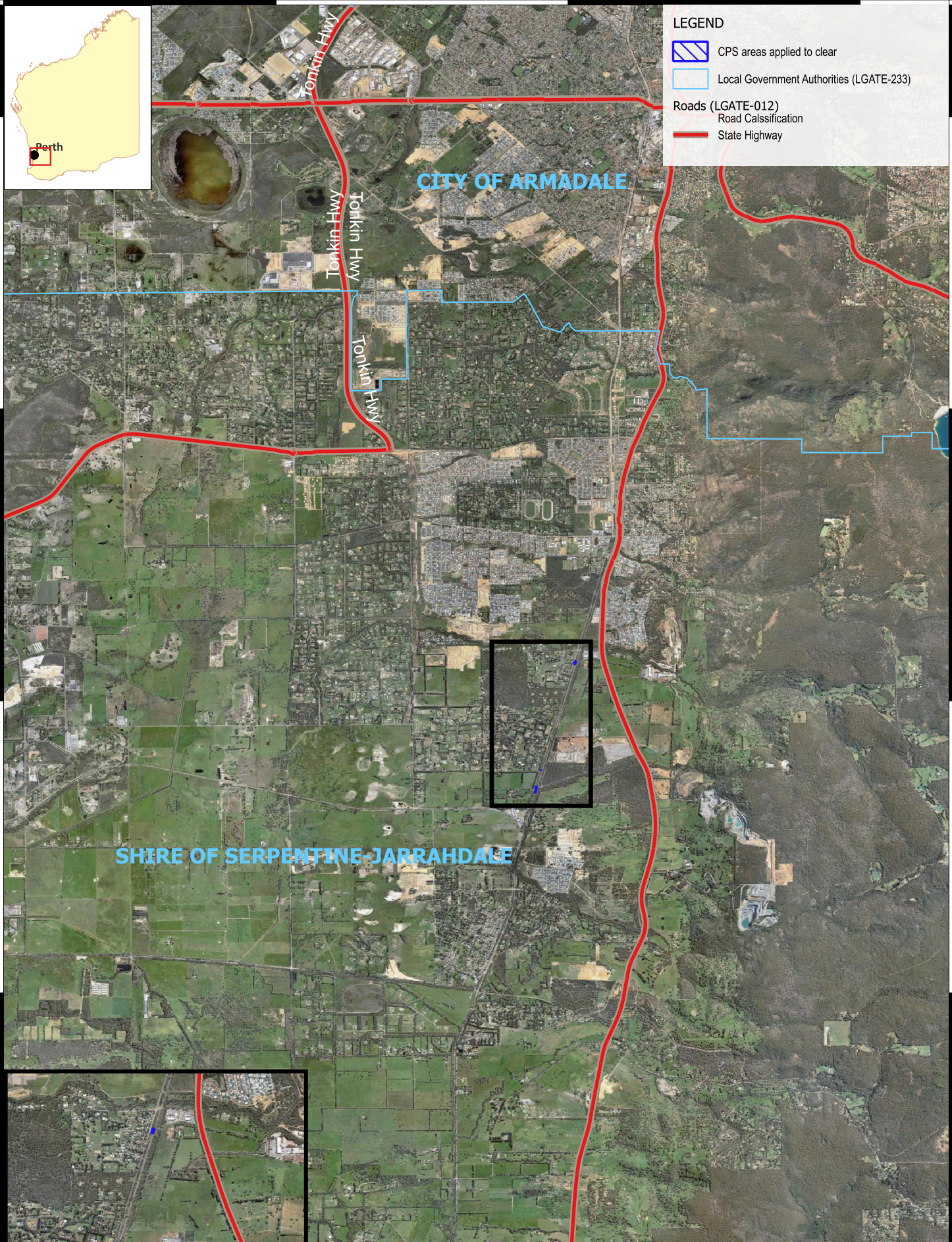


LEGEND

-  CPS areas applied to clear
-  Local Government Authorities (LGATE-233)

Roads (LGATE-012)

-  Road Classification
-  State Highway

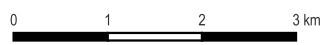


CITY OF ARMADALE

SHIRE OF SERPENTINE-JARRAHDAL

CPS 11153/2 - Context Map

Date Created: 26/05/2026 Authored by: NVR
 Version No. 1 Reviewed by: NVR



Scale: 1:60614.499423
 Spatial Reference: GDA2020



CPS 11153/2
OFFICIAL

Project:
 Information Classification:
 Sources - The author acknowledges the datasets used in the production of this map and their custodians, as referenced in the Legend above.