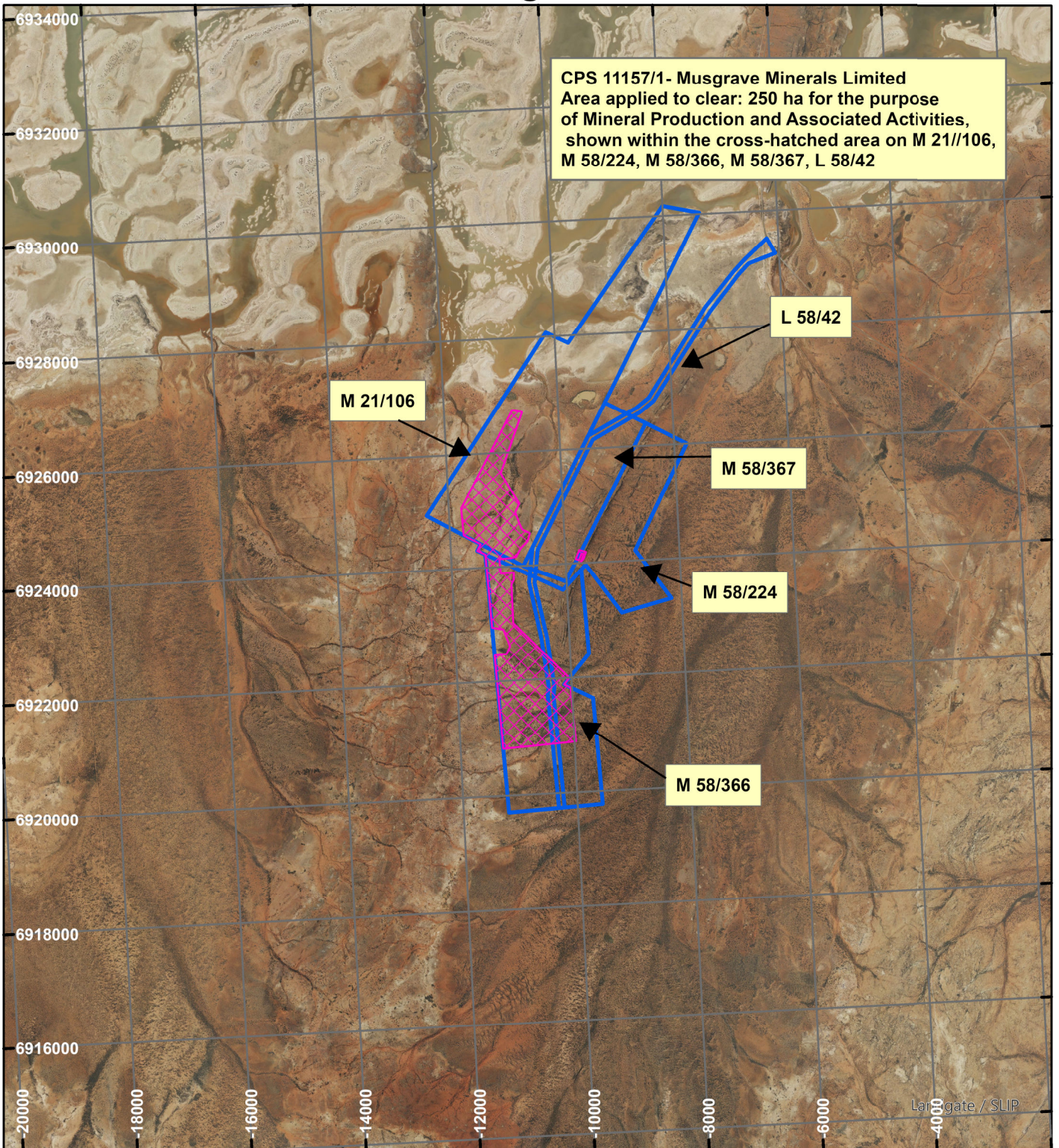


# CPS 11157/1- Musgrave Minerals Limited

CPS 11157/1- Musgrave Minerals Limited  
Area applied to clear: 250 ha for the purpose  
of Mineral Production and Associated Activities,  
shown within the cross-hatched area on M 21//106,  
M 58/224, M 58/366, M 58/367, L 58/42



## LEGEND



Clearing Instruments



Mining Tenements



Scale 1:100,000

(Approximate when reproduced at A4)

Geocentric Datum Australia 1994

Note: the data in this map have not been projected. This may result in geometric distortion or measurement inaccuracies.

..... Date .....

Officer with delegated authority under Section 20 of  
the Environmental Protection Act 1986

Information derived from this map should be  
confirmed with the data custodian acknowledged  
by the agency acronym in the legend.