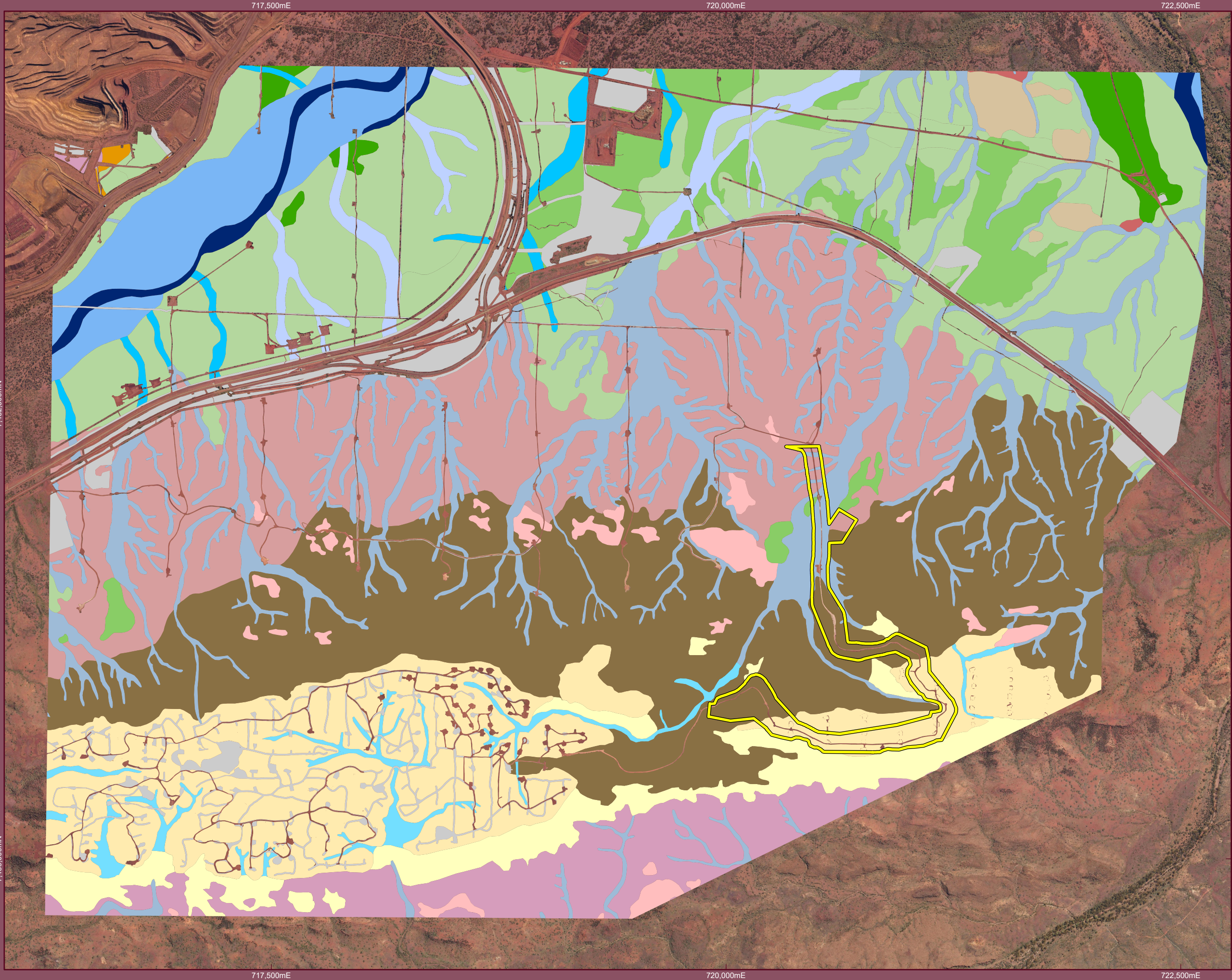


Figure 1: Overview Map of Proposal Area

Drawn: D.von Holdt
 Plan: RTIO-1118309v1
 Date: June 2025

Checked by: A.Coulson
 Proj: GDA 1994 MGA Zone 50
 GIS.Team@riotinto.com

Disclaimer: Copyright in this document is owned by or is licensed to the relevant Rio Tinto Group member(s) and may contain confidential information of the relevant Rio Tinto Group member(s). This document has been prepared to the appropriate level of accuracy as required for its purposes. Reproduction, distribution or disclosure of this document in whole or in part by any means is strictly prohibited without the express written approval of the relevant Rio Tinto Group member(s). Any unauthorised use or disclosure of this document may result in loss or damage to the relevant Rio Tinto Group member(s). Further this document may not be relied upon, quoted or relied upon for any purpose whatsoever without the written approval of the relevant Rio Tinto Group member(s). To the maximum extent permitted by law, the relevant Rio Tinto Group member(s): (a) will not be liable to a third party for any loss, damage, liability or claim arising out of or incidental to a third party using or relying on the content contained in this document, whether such use was authorised or not; and (b) disclaims all risk, representations and warranties (express or implied), and the third party assumes all risk and releases and indemnifies and agrees to keep indemnified the relevant Rio Tinto Group member(s) from any loss, damage, claim or liability arising directly or indirectly from the use or reliance on this document.



Legend

Proposal Area

Vegetation Type

H1

H2

H3

H4

H5

H6

H7

H8

H11

D1

D2

D3

D4

D7

D8

P1

P3

P4

Cleared

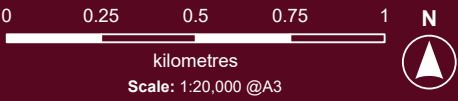
Drawn: D. von Holdt
Plan: RTIO-1118309v1
Date: June 2025

Checked by: A.Coulson
Proj: GDA 1994 MGA Zone 50
GIS.Team@riotinto.com




Disclaimer: Copyright in this document is owned by or is licensed to the relevant Rio Tinto Group member(s) and may contain confidential information of the relevant Rio Tinto Group member(s). This document has been prepared to the appropriate level of accuracy as required for its purposes. Reproduction, distribution or disclosure of this document in whole or in part by any means is strictly prohibited without the express written approval of the relevant Rio Tinto Group member(s). Any unauthorised use or disclosure of this document may result in loss or damage to the relevant Rio Tinto Group member(s). Further this document may not be referred to, quoted or relied upon for any purpose whatsoever without the written approval of the relevant Rio Tinto Group member(s). To the maximum extent permitted by law, the relevant Rio Tinto Group member(s), (a) will not be liable to a third party for any loss, damage, liability or claim arising out of or incidental to a third party using or relying on the content contained in this document, whether such use was authorised or not; and (b) disclaims all risk, representations and warranties (express or implied), and the third party assumes all risk and releases and indemnifies and agrees to keep indemnified the relevant Rio Tinto Group member(s) from any loss, damage, claim or liability arising directly or indirectly from the use or reliance on this document.


Figure 3: Vegetation Types





Vegetation Mapping


Hilltops/Hillslopes


- 


H1
Eucalyptus leucophloia subsp. *leucophloia*, *Corymbia hamersleyana* sens. lat. scattered low trees to low open woodland over *Petalostylis labicheoides*, *Senna glutinosa* subsp. *glutinosa* scattered tall shrubs over *Gompholobium oreophilum*, *Acacia hilliana*, *A. spondylophylla* low open shrubland to low shrubland over *Triodia vanleeuwenii*, *T. wiseana*, *T. pungens* open hummock grassland with *Amphipogon sericeus* scattered tussock grasses
- 


H2
Eucalyptus repullulans scattered low mallees over *Acacia catenulata* subsp. *occidentalis*, *A. aptaneura*, (*Grevillea saxicola*) tall shrubland to tall open scrub over *Scaevola acacioides*, *Dodonaea pachyneura*, *Eremophila latrobei* subsp. *filiformis* scattered shrubs to open shrubland over *Triodia* *pungens* scattered hummock grasses to very open hummock grassland with *Eriachne mucronata* scattered tussock grasses to very open tussock grassland
- 


H3
Corymbia deserticola subsp. *deserticola* scattered low trees over *Acacia inaequilatera*, *Hakea chordophylla* scattered tall shrubs to tall open shrubland over *Senna glutinosa* subsp. *pruinosa* scattered shrubs over *Triodia vanleeuwenii* open hummock grassland with *Amphipogon sericeus* scattered tussock grasses to very open tussock grassland
- 

H4
Eucalyptus leucophloia subsp. *leucophloia* scattered low trees over *Senna glutinosa* subsp. *glutinosa*, *S. glutinosa* subsp. *pruinosa* scattered shrubs over *Triodia vanleeuwenii* and/or *T. wiseana* open hummock grassland to hummock grassland
- 

H5
Eucalyptus socialis subsp. *eucentrica* scattered low mallees to low open mallee woodland over *Acacia bivenosa* scattered tall shrubs to tall open shrubland over *Senna glutinosa* subsp. *x luerssenii* scattered shrubs over *Ptilotus obovatus* scattered low shrubs over *Triodia wiseana* very open hummock grassland to open hummock grassland
- 


H6
Acacia aptaneura, *A. catenulata* subsp. *occidentalis* tall open shrubland to tall shrubland over *Eremophila forrestii* subsp. *forrestii*, *Senna stricta* scattered shrubs to open shrubland over *Triodia pungens* and/or *T. vanleeuwenii* and/or *T. wiseana* scattered hummock grasses to very open hummock grassland with *Eriachne mucronata* scattered tussock grasses
- 


H7
Eucalyptus leucophloia subsp. *leucophloia* scattered low trees to low open woodland over *Senna glutinosa* subsp. *glutinosa*, *Acacia maitlandii* scattered shrubs over *Triodia wiseana* and/or *T. vanleeuwenii* and/or *T. pungens* open hummock grassland to hummock grassland
- 


H8
Eucalyptus leucophloia subsp. *leucophloia* scattered low trees to low open woodland over *Acacia pruinocarpa*, *Hakea chordophylla* scattered tall shrubs to tall open shrubland over *Triodia vanleeuwenii*, (*T. pungens*) open hummock grassland to hummock grassland with *Amphipogon sericeus* scattered tussock grasses
- 

H9
Acacia arida, *Grevillea wickhamii* subsp. *hispidula* open shrubland over *Triodia wiseana* open hummock grassland with *Themeda* sp. *Mt Barricade* (M.E. Trudgen 2471) very open tussock grassland

Hilltops/Hillslopes cont.


- 

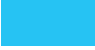
H10
Eucalyptus leucophloia subsp. *leucophloia* scattered low trees with *E. repullulans* and/or *E. socialis* subsp. *eucentrica* and/or *E. pilbarensis* scattered low mallees to low open mallee woodland over *Acacia bivenosa* scattered shrubs over *Triodia wiseana*, (*T. angusta*) open hummock grassland to hummock grassland
- 


H11
Eucalyptus leucophloia subsp. *leucophloia* scattered low trees with *E. gamophylla* low open mallee woodland over *Acacia ancistrocarpa* scattered tall shrubs to tall open shrubland over *A. hilliana* scattered low shrubs to low open shrubland over *Triodia vanleeuwenii*, (*T. pungens*) open hummock grassland to hummock grassland
- 


H12
Corymbia hamersleyana sens. lat. scattered low trees over *Acacia inaequilatera*, *Hakea chordophylla*, *A. bivenosa* scattered tall shrubs to tall open shrubland over *Senna artemisioides* subsp. *oligophylla* scattered low shrubs over *Triodia wiseana* open hummock grassland to hummock grassland with *Themeda* sp. *Mt Barricade* (M.E. Trudgen 2471), *Cymbopogon ambiguus* scattered tussock grasses and *Heliotropium ovalifolium*, *Corchorus lasiocarpus* subsp. *parvus* scattered herbs

Drainage

- 


D1
Corymbia hamersleyana sens. lat., *Eucalyptus leucophloia* subsp. *leucophloia* scattered low trees to low open woodland over *Petalostylis labicheoides*, *Acacia monticola*, *A. maitlandii* scattered tall shrubs to tall shrubland over *Dodonaea lanceolata* var. *lanceolata*, *Androcalva luteiflora* scattered shrubs to open shrubland over *Triodia pungens* very open hummock grassland to open hummock grassland with *Themeda triandra*, *Eriachne mucronata* very open tussock grassland to open tussock grassland
- 


D2
Acacia aptaneura, *A. catenulata* subsp. *occidentalis*, *A. pruinocarpa* tall shrubland to tall open scrub over *Petalostylis labicheoides* scattered shrubs to open shrubland over *Triodia pungens* very open hummock grassland with *Chrysopogon fallax* scattered tussock grasses
- 


D3
Corymbia ferritcola, *Eucalyptus leucophloia* subsp. *leucophloia* low open woodland over *Petalostylis labicheoides*, *Acacia hamersleyensis*, *Dodonaea viscosa* subsp. *spatulata* tall open shrubland over *Triodia pungens* very open hummock grassland with *Eriachne mucronata*, *Themeda* sp. *Mt Barricade* (M.E. Trudgen 2471), *Cymbopogon ambiguus* very open tussock grassland to tussock grassland
- 

D4
Eucalyptus victrix, (*E. camaldulensis* subsp. *obtus*a) low open woodland to open woodland over *Acacia citrinoviridis*, *Petalostylis labicheoides* scattered tall shrubs to tall shrubland over *Androcalva luteiflora*, *Gossypium sturtianum* var. *sturtianum* scattered shrubs to open shrubland over *Triodia longiceps* scattered hummock grasses to very open hummock grassland with *Themeda triandra*, *Eulalia aurea*, (**Cenchrus ciliaris*) very open tussock grassland to tussock grassland and **Bidens bipinnata* scattered herbs

Drainage cont.


- 


D5
Eucalyptus xerothermica scattered low trees to low open woodland over *Petalostylis labicheoides*, *Acacia maitlandii*, *A. pyrifolia* tall open shrubland to tall shrubland over *Androcalva luteiflora* scattered shrubs over *Triodia longiceps* very open hummock grassland to open hummock grassland with *Themeda triandra*, *Eulalia aurea* open tussock grassland to tussock grassland and **Bidens bipinnata* scattered herbs
- 


D7
Acacia citrinoviridis, *A. aptaneura*, *A. pruinocarpa* scattered tall shrubs to tall shrubland over *Senna artemisioides* subsp. *oligophylla* scattered low shrubs over *Triodia longiceps* open hummock grassland to hummock grassland
- 


D8
Eucalyptus xerothermica scattered low trees to low open woodland over *Acacia aptaneura*, *A. catenulata* subsp. *occidentalis* tall open shrubland to tall open scrub over *Triodia pungens* scattered hummock grasses to very open hummock grassland with *Themeda triandra* very open tussock grassland to open tussock grassland

Plains

- 

P1
Acacia aptaneura, *A. catenulata* subsp. *occidentalis*, (*A. pruinocarpa*) tall shrubland to tall open scrub over *Eremophila forrestii* subsp. *forrestii* open shrubland to shrubland over *Triodia pungens*, (*T. vanleeuwenii*) scattered hummock grasses to very open hummock grassland
- 

P2
Acacia aptaneura, *A. pruinocarpa*, *A. tetragonophylla* scattered tall shrubs to tall open shrubland over *Eremophila forrestii* subsp. *forrestii*, *A. synchronica* scattered shrubs over *Ptilotus obovatus*, *Sida fibulifera* scattered low shrubs over *Aristida latifolia*, *Astrebla elymoides*, *Eragrostis xerophila* open tussock grassland to tussock grassland
- 

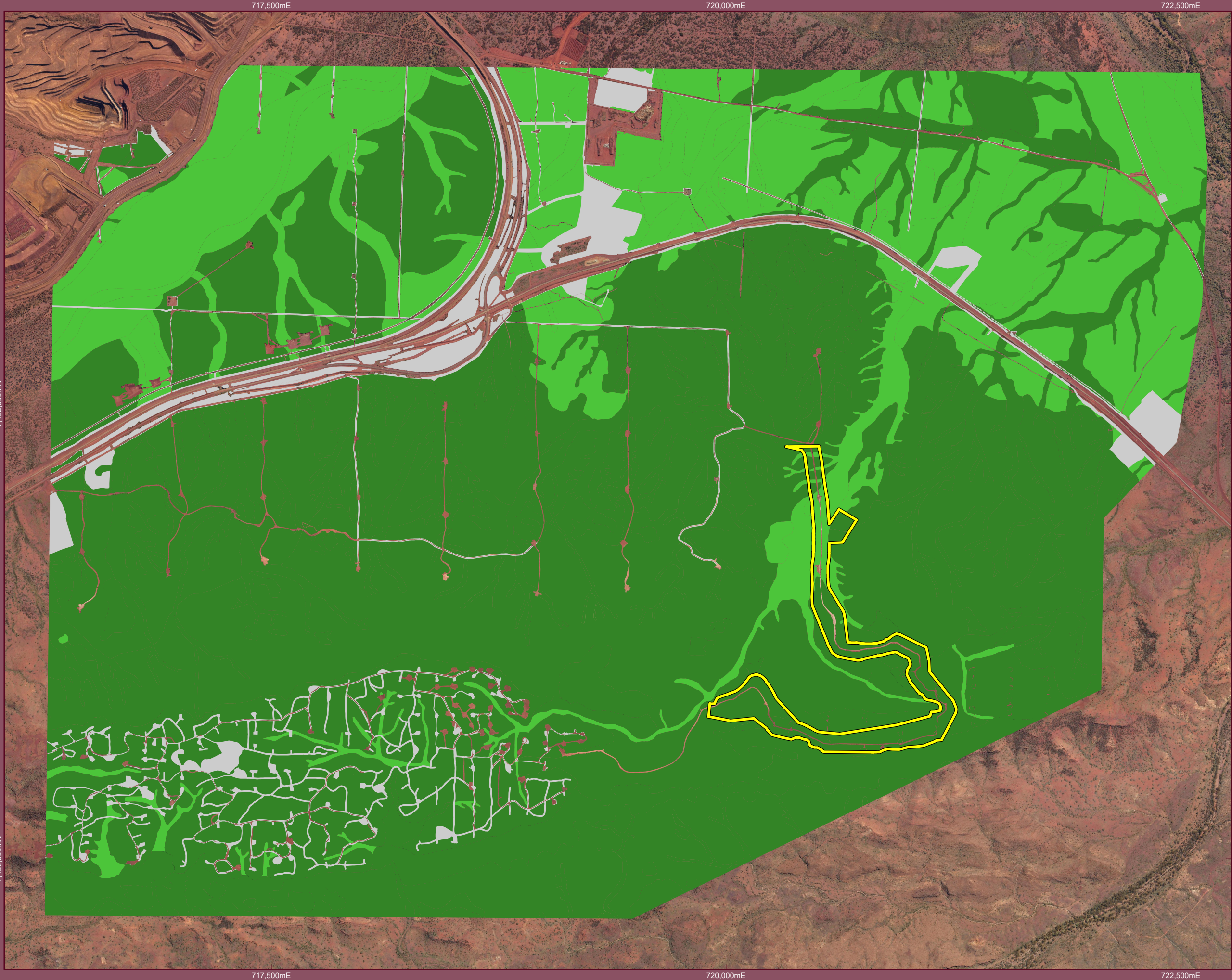
P3
Acacia aptaneura, *A. catenulata* subsp. *occidentalis*, *A. pruinocarpa* tall open shrubland to tall shrubland over *Eremophila forrestii* subsp. *forrestii* scattered shrubs to open shrubland over *Triodia pungens* open hummock grassland to hummock grassland
- 

P4
Acacia pruinocarpa, *A. aptaneura*, *A. catenulata* subsp. *occidentalis* tall open shrubland to tall shrubland over *Rhagodia eremaea* scattered shrubs

Special Cases

- 

HD - Area cleared of vegetation



Legend

 Proposal Area

Vegetation Condition

 1 - Excellent

 0.8 - Very Good

 0.1 - Cleared

Drawn: D. von Holdt
Plan: RTIO-1118309v1
Date: June 2025

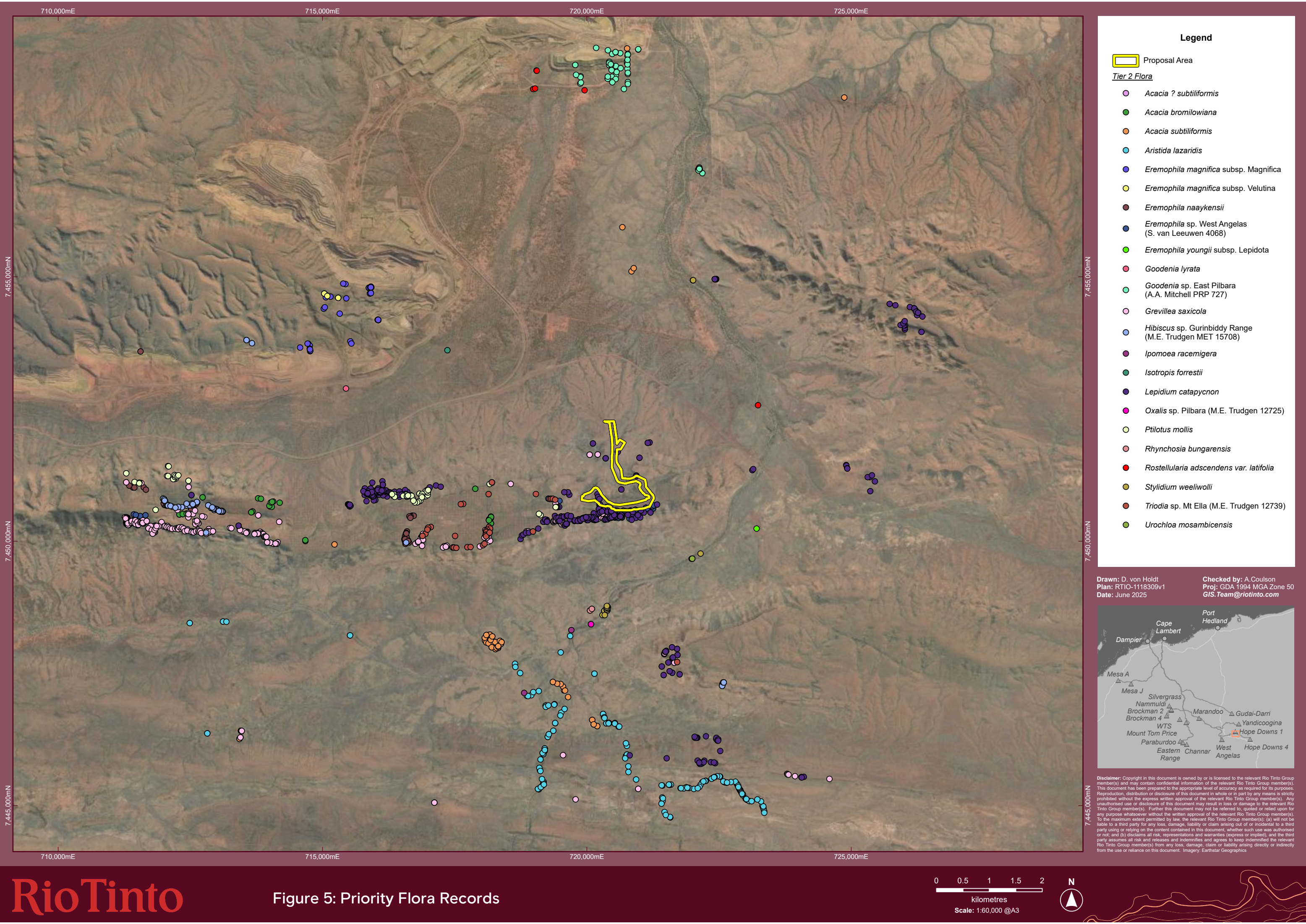
Checked by: A. Coulson
Proj: GDA 1994 MGA Zone 50
GIS: Team@riotinto.com



Disclaimer: Copyright in this document is owned by or is licensed to the relevant Rio Tinto Group member(s) and may contain confidential information of the relevant Rio Tinto Group member(s). This document has been prepared to the appropriate level of accuracy as required for its purposes. Reproduction, distribution or disclosure of this document in whole or in part by any means is strictly prohibited without the express written approval of the relevant Rio Tinto Group member(s). Any unauthorised use or disclosure of this document may result in loss or damage to the relevant Rio Tinto Group member(s). Further this document may not be referred to, quoted or relied upon for any purpose whatsoever without the written approval of the relevant Rio Tinto Group member(s). To the maximum extent permitted by law, the relevant Rio Tinto Group member(s), (a) will not be liable to a third party for any loss, damage, liability or claim arising out of or incidental to a third party using or relying on the content contained in this document, whether such use was authorised or not; and (b) disclaims all risk, representations and warranties (express or implied), and the third party assumes all risk and releases and indemnifies and agrees to keep indemnified the relevant Rio Tinto Group member(s) from any loss, damage, claim or liability arising directly or indirectly from the use or reliance on this document.

Figure 4: Vegetation Condition







Legend

- Proposal Area

Fauna Habitat

- Alluvial Plain
- Breakaway
- Gorge/Gully
- Low Hills and Slopes
- Major Drainage
- Minor Drainage
- Mulga Woodland
- Rocky Hill
- Stony Plain
- Cleared

Drawn: D. von Holdt
Plan: RTIO-1118309v1
Date: June 2025

Checked by: A. Coulson
Proj: GDA 1994 MGA Zone 50
GIS.Team@riotinto.com



Disclaimer: Copyright in this document is owned by or is licensed to the relevant Rio Tinto Group member(s) and may contain confidential information of the relevant Rio Tinto Group member(s). This document has been prepared to the appropriate level of accuracy as required for its purposes. Reproduction, distribution or disclosure of this document in whole or in part by any means is strictly prohibited without the express written approval of the relevant Rio Tinto Group member(s). Any unauthorised use or disclosure of this document may result in loss or damage to the relevant Rio Tinto Group member(s). Further this document may not be referred to, quoted or relied upon for any purpose whatsoever without the written approval of the relevant Rio Tinto Group member(s). To the maximum extent permitted by law, the relevant Rio Tinto Group member(s), (a) will not be liable to a third party for any loss, damage, liability or claim arising out of or incidental to a third party using or relying on the content contained in this document, whether such use was authorised or not; and (b) disclaims all risk, representations and warranties (express or implied), and the third party assumes all risk and releases and indemnifies and agrees to keep indemnified the relevant Rio Tinto Group member(s) from any loss, damage, claim or liability arising directly or indirectly from the use or reliance on this document.

Figure 6: Fauna Habitats

