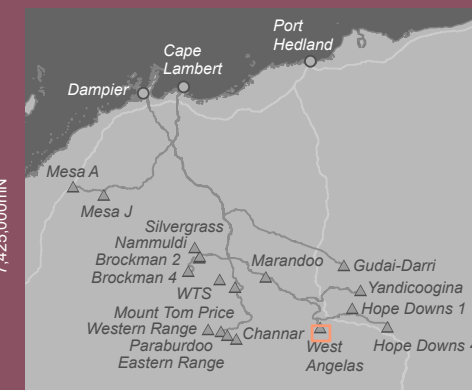


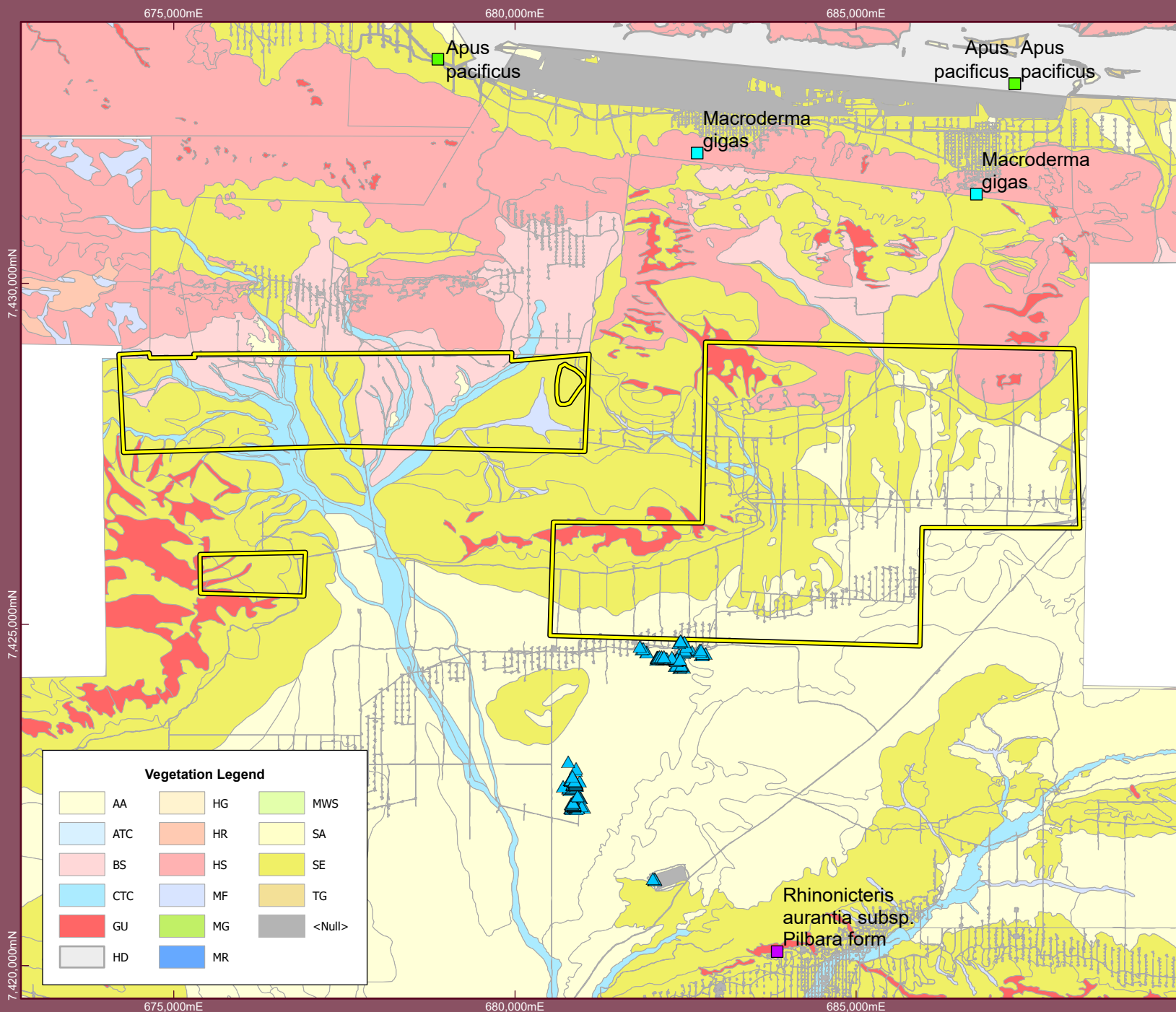
- Legend**
- Proposed NVCP Application Area
 - DBCA TEC and PEC Buffer
 - Rio Tinto Live Mining Act Tenure
 - Rio Tinto Mine
 - Rio Tinto Railway

Drawn: M.Ludovico
Plan: RTIO-1131155v1
Date: October 2025

Checked by: L.Fuentes
Proj: GDA 1994 MGA Zone 50
GIS.Team@riotinto.com



Disclaimer: Copyright in this document is owned by or is licensed to the relevant Rio Tinto Group member(s) and may contain confidential information of the relevant Rio Tinto Group member(s). This document has been prepared to the appropriate level of accuracy as required for its purposes. Reproduction, distribution or disclosure of this document in whole or in part by any means is strictly prohibited without the express written approval of the relevant Rio Tinto Group member(s). Any unauthorised use or disclosure of this document may result in loss or damage to the relevant Rio Tinto Group member(s). Further this document may not be referred to, quoted or relied upon for any purpose whatsoever without the written approval of the relevant Rio Tinto Group member(s). To the maximum extent permitted by law, the relevant Rio Tinto Group member(s): (a) will not be liable to a third party for any loss, damage, liability or claim arising out of or incidental to a third party using or relying on the content contained in this document, whether such use was authorised or not; and (b) disclaims all risk, representations and warranties (express or implied), and the third party assumes all risk and releases and indemnifies and agrees to keep indemnified the relevant Rio Tinto Group member(s) from any loss, damage, claim or liability arising directly or indirectly from the use or reliance on this document.



Legend

Proposed NVCP Application Area

Fauna Tier 1

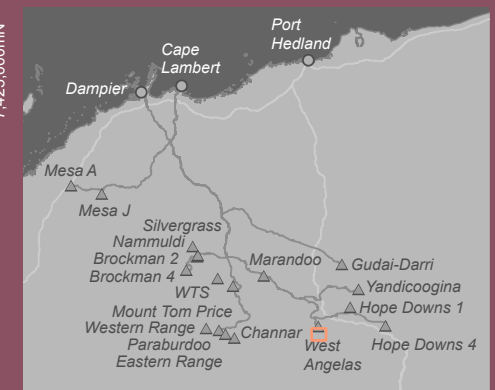
- Apus pacificus
- Macroderma gigas
- Rhinonictis aurantia subsp. Pilbara form

Flora P1

- ▲ Sida sp. Turee Creek (P.-L.de Kock PLDK1116)

Drawn: M.Ludovico
 Plan: RTIO-1131155v1
 Date: October 2025

Checked by:
 Proj: GDA 1994 MGA Zone 50
 GIS.Team@riotinto.com



Disclaimer: Copyright in this document is owned by or is licensed to the relevant Rio Tinto Group member(s) and may contain confidential information of the relevant Rio Tinto Group member(s). This document has been prepared to the appropriate level of accuracy as required for its purposes. Reproduction, distribution or disclosure of this document in whole or in part by any means is strictly prohibited without the express written approval of the relevant Rio Tinto Group member(s). Any unauthorised use or disclosure of this document may result in loss or damage to the relevant Rio Tinto Group member(s). Further this document may not be referred to, quoted or relied upon for any purpose whatsoever without the written approval of the relevant Rio Tinto Group member(s). To the maximum extent permitted by law, the relevant Rio Tinto Group member(s): (a) will not be liable to a third party for any loss, damage, liability or claim arising out of or incidental to a third party using or relying on the content contained in this document, whether such use was authorised or not; and (b) disclaims all risk, representations and warranties (express or implied), and the third party assumes all risk and releases and indemnifies and agrees to keep indemnified the relevant Rio Tinto Group member(s) from any loss, damage, claim or liability arising directly or indirectly from the use or reliance on this document.

Vegetation Legend		
 AA	 HG	 MWS
 ATC	 HR	 SA
 BS	 HS	 SE
 CTC	 MF	 TG
 GU	 MG	 <Null>
 HD	 MR	