



Information to support clearing permit application

Yawuru Native Title Area - Broome Groundwater Area

Location

The proposed drilling sites are within 50 km of Broome (Figure 1) on the Pindan sand landform type. This permit is for drill pad clearing purposes, all within the Shire of Broome.

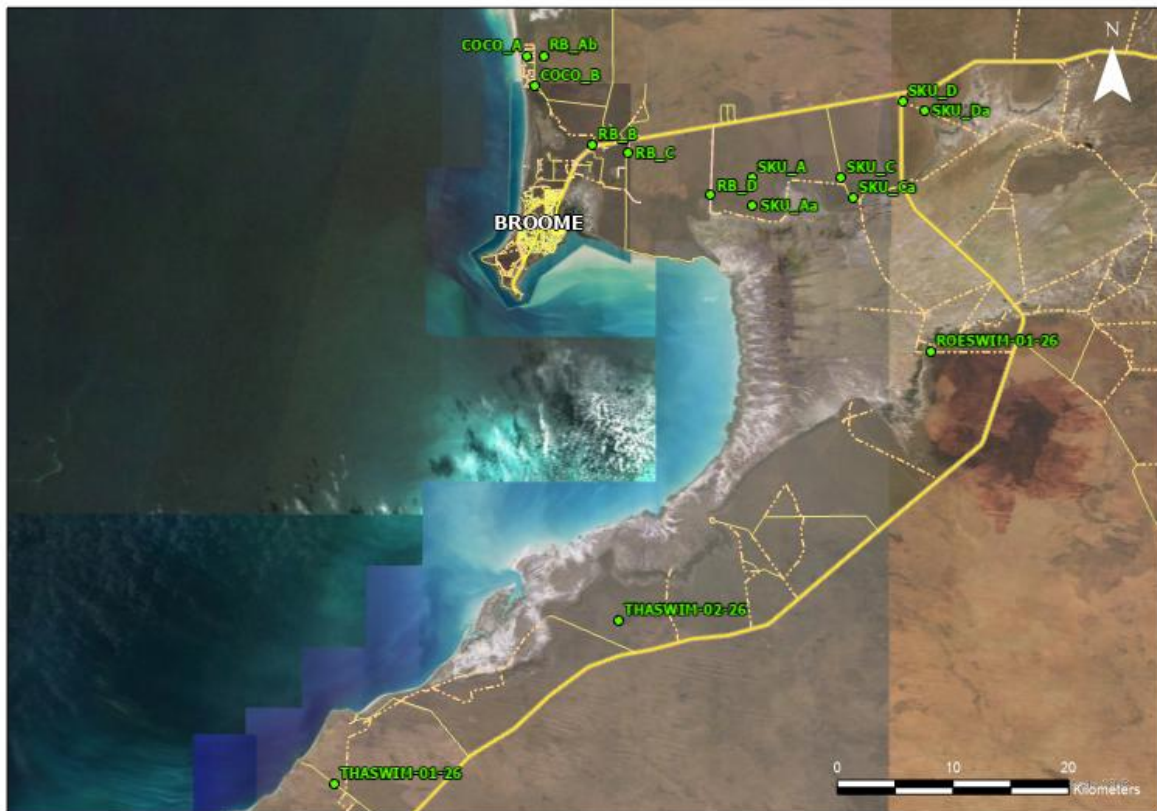


Figure 1: Location of proposed bore sites

All sites are located adjacent to existing track or next to sealed roads to minimise environmental impacts. Some tracks will need to be cleared of regrowth to allow access for heavy vehicles. The sites are typically located in medium density native vegetation which will need to be cleared to allow a safe working environment for the drill crews. In general pad dimensions are 25 x 25 m, except where tenure constraints or existing infrastructure (E.g. fence lines) have necessitated smaller work areas.

All drill sites have been physically inspected, with locations altered to avoid the clearing of large trees or areas of dense vegetation. The final cleared area may be less than the 25 x 25 m applied for depending on the requirements of the drilling contractor (contract yet to be awarded).



Details of the maximum potential clearing areas associated with the proposed bore sites are provided in Table 1. The land details are summarised in Table 2, with the proposed bore locations and pads shown in Figure 2 to Figure 16.

Communication and consultations are continuing with DPLH, the Shire of Broome, traditional owners and pastoral landowners. Consent has been verbally obtained however, the Department is still awaiting some written approvals. These approvals will be sent through and updated when received.

Table 1: Potential clearing areas associated with proposed bore sites

Proposed Site	Estimated clearing area for pads (m ²) [^]	Comments
COCO_A	202.37	On road reserve, largely free of vegetation. Minor clearing required.
COCO_B	372.03	On road reserve, medium to high density vegetation. Clearing of triangular area between sealed road and track.
RB_Ab	454.44	Width of pad limited to road reserve. Medium to high density vegetation to be cleared.
RB_B	541.84	Width of pad limited to road reserve. Medium density vegetation to be cleared.
RB_C	655.06	Part of drill pad to be set on already cleared road reserve. Medium density vegetation to be cleared.
RB_D	654.93	On pastoral station track. Medium density vegetation to be cleared.
ROESWIM-01-26	519.10	On pastoral station track. Medium density vegetation to be cleared.
SKU_A	654.97	On pastoral station track, vegetation regrowth to be cleared to allow for heavy vehicle access. Medium density vegetation to be cleared.
SKU_Aa	654.89	On pastoral station track, vegetation regrowth to be cleared to allow for heavy vehicle access. Medium density vegetation to be cleared.
SKU_C	654.95	On access road to Roebuck Plains Homestead. Medium density vegetation to be cleared.
SKU_Ca	365.48	On access road to Roebuck Plains Homestead. Pad width restricted by fence line. Low density vegetation to be cleared.
SKU_D	567.95	On pastoral station track. Medium density vegetation to be cleared.
SKU_Da	655.13	On pastoral station track. Medium density vegetation to be cleared.
THASWIM-01-26	603.63	On pastoral station track. High density vegetation to be cleared.
THASWIM-02-26	622.23	On pastoral station track. High density vegetation to be cleared.
Total (m²)	8,179.01	
Total (ha)	0.82	

[^]The maximum pad size has been estimated as approximately 25 m x 25 m however these are expected to be smaller and large trees will be avoided as much as possible



Table 2: Land details associated with proposed bore sites

Bore Name	Coordinates (MGA2020, Zn51)		Native Title Owners	Land use	Lot No.	Land Type	Tenure
	mE	mN					
COCO_A	416,815	8,029,645	Nil	Road Isolation (Type 3 P)	NA	Road	Shire of Broome
COCO_B	417,408	8,027,088	Nil	Road Isolation (Type 3 P)	NA	Road	Shire of Broome
RB_Ab	418,129	8,029,683	Yawuru	Road Isolation (Type 3 P)	LR3169/298	Road	Department of Planning Lands and Heritage
RB_B	422,199	8,022,006	Nil	Road Isolation (Type 3 P)	NA	Road	Shire of Broome
RB_C	425,067	8,021,366	Nil	Road Isolation (Type 3 P), Unused	LR3161/629 and 2786/13	Road / Freehold	Department of Planning Lands and Heritage / Nyamba



Bore Name	Coordinates (MGA2020, Zn51)		Native Title Owners	Land use	Lot No.	Land Type	Tenure
	mE	mN					
							Buru Yawuru Ltd
RB_D	431,897	8,017,784	Yawuru	Pastoral – Roebuck Station	LPL N049900	Crown Lease	Nyamba Buru Yawuru Ltd
ROESWIM-01-26	449,979	8,004,447	Yawuru	Pastoral – Roebuck Station	LPL N049900	Crown Lease	Nyamba Buru Yawuru Ltd
SKU_A	435,301	8,019,314	Yawuru	Pastoral – Roebuck Station	LPL N049900	Crown Lease	Nyamba Buru Yawuru Ltd
SKU_Aa	435,359	8,016,922	Yawuru	Pastoral – Roebuck Station	LPL N049900	Crown Lease	Nyamba Buru Yawuru Ltd
SKU_C	442,620	8,019,305	Yawuru	Pastoral – Roebuck Station	LPL N049900	Crown Lease	Nyamba Buru Yawuru Ltd



Bore Name	Coordinates (MGA2020, Zn51)		Native Title Owners	Land use	Lot No.	Land Type	Tenure
	mE	mN					
SKU_Ca	443,637	8,017,597	Yawuru	Pastoral – Roebuck Station	LPL N049900	Crown Lease	Nyamba Buru Yawuru Ltd
SKU_D	447,637	8,025,843	Yawuru	Pastoral – Roebuck Station	LPL N049900	Crown Lease	Nyamba Buru Yawuru Ltd
SKU_Da	449,409	8,025,111	Yawuru	Pastoral – Roebuck Station	LPL N049900	Crown Lease	Nyamba Buru Yawuru Ltd
THASWIM-01-26	401,261	7,967,130	Yawuru	Pastoral lease – Thangoo Station	LPL N049955	Crown Lease	Thangoo Pty Ltd
THASWIM-02-26	424,531	7,981,309	Yawuru	Pastoral lease – Thangoo Station	LPL N049955	Crown Lease	Thangoo Pty Ltd



Figure 2: COCO_A Pad



Figure 3: COCO_B Pad





Figure 4: RB_Ab Pad



Figure 5: RB_B Pad





Figure 6: RB_C Pad

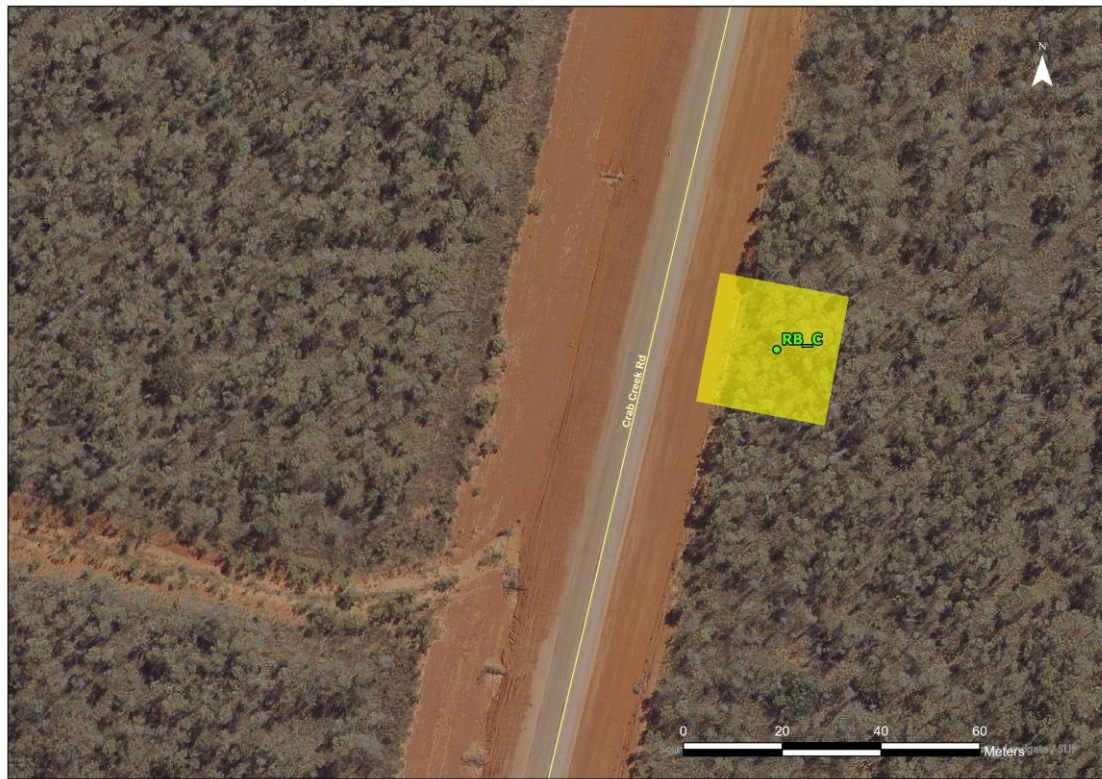


Figure 7: RB_D Pad





Figure 8: ROESWIM-01-26 Pad

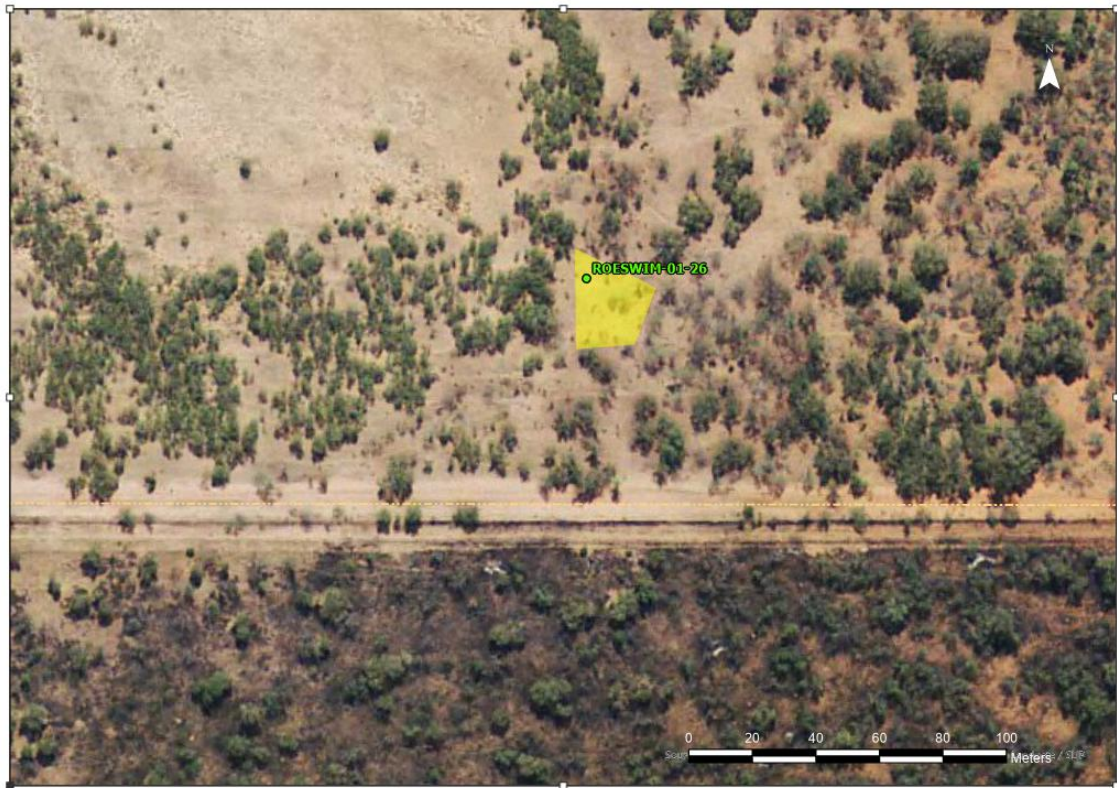


Figure 9: SKU_A Pad





Figure 10: SKU_Aa Pad



Figure 11: SKU_C Pad





Figure 12: SKU_Ca Pad



Figure 13: SKU_D Pad

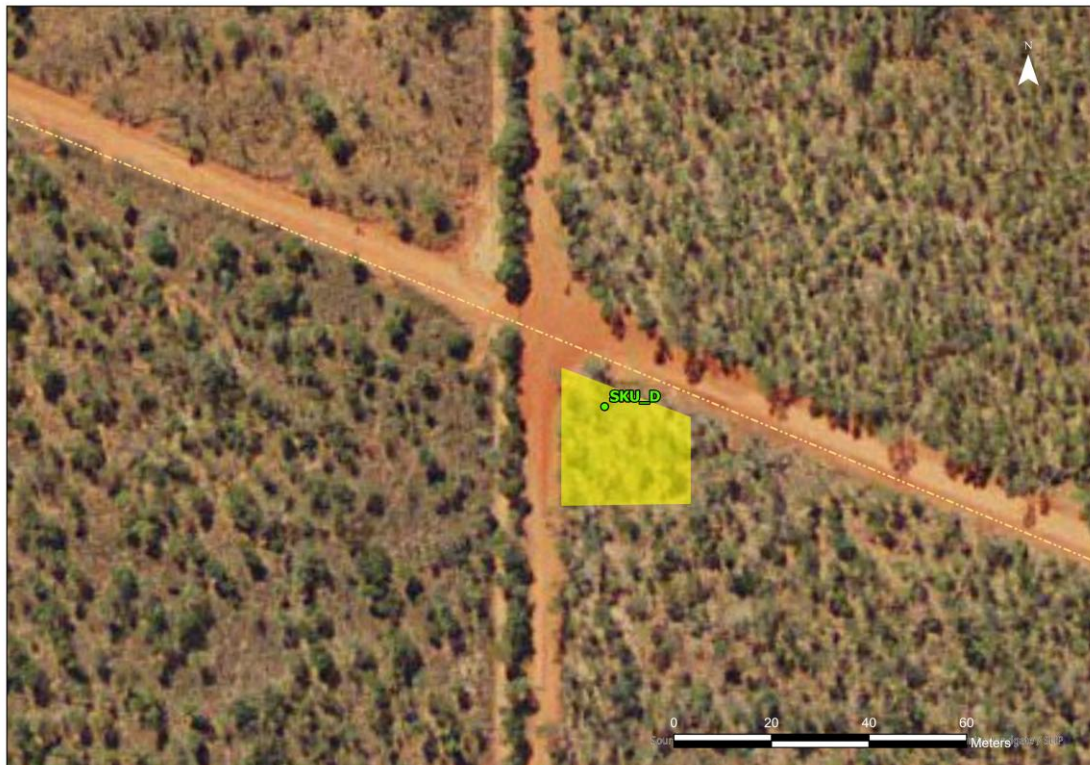




Figure 14: SKU_Da Pad



Figure 15: THASWIM-01-26





Figure 16: THASWIM-02-26

