



Information to support clearing permit application

Karajarri Native Title Area - La Grange Groundwater Area

Location

The proposed drilling sites are within 200 km of Broome (Figure 1) on the Pindan sand landform type. There are five locations that need clearing so that six monitoring bores can be installed. This permit is for drill pad clearing purposes, all within the Shire of Broome.

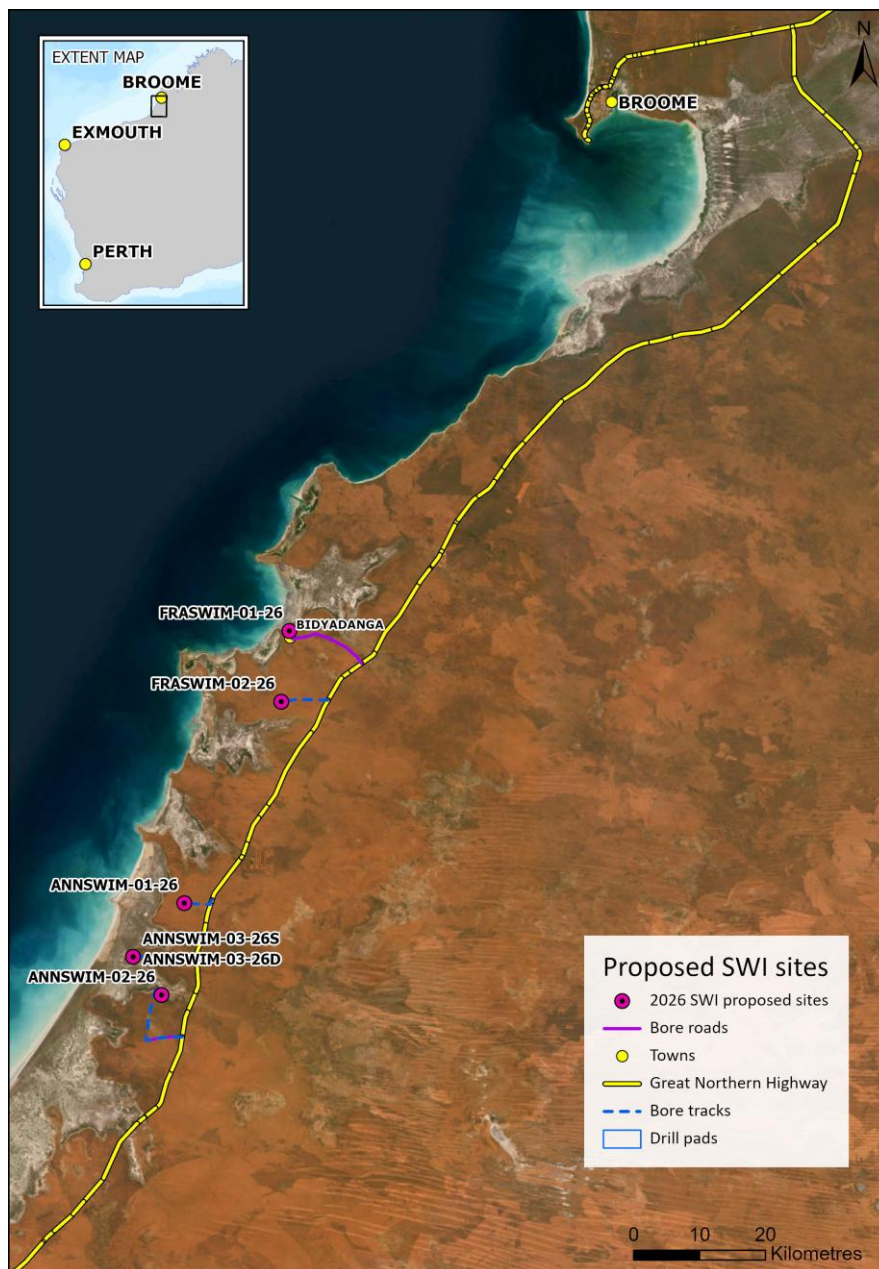


Figure 1 Location of proposed bore sites



To minimise environmental impact all sites are located adjacent to existing tracks. Some tracks will need to be graded to clear small growth and overhanging vegetation, to allow access for heavy vehicles. The sites are typically located in low to medium density native vegetation which will need to be cleared to allow a safe working environment for the drill crews. In general, pad dimensions are 25 x 25 m.

All drill sites have been physically inspected, with locations altered to avoid the clearing of large trees or areas of dense vegetation. The final cleared area may be less than the 25 x 25 m applied for depending on the requirements of the drilling contractor (contract yet to be awarded).

Details of the maximum potential clearing areas associated with the proposed bore sites are provided in The land details are summarised in Table 2 and Site locations of the bore pads and access tracks and shown in **Error! Reference source not found.** to **Error! Reference source not found.**.

Communication and consultations are continuing with DPLH, the Shire of Broome, traditional owners and pastoral landowners. Consent has been verbally obtained however the Department is still awaiting some written approvals. These approvals will be sent through and updated when received.

. The land details are summarised in Table 2 and Site locations of the bore pads and access tracks and shown in **Error! Reference source not found.** to **Error! Reference source not found.**.

Communication and consultations are continuing with DPLH, the Shire of Broome, traditional owners and pastoral landowners. Consent has been verbally obtained however the Department is still awaiting some written approvals. These approvals will be sent through and updated when received.

Table 1: Potential clearing areas associated with proposed bore sites

Proposed Site	Estimated clearing area for pads (m ²)^	Total track Length from Great Northern Highway (m)	Estimated veg clearing for tracks (m)	Comments
FRASWIM-01-26	625	1180	0	Low density vegetation
FRASWIM-02-26	625	7194	0	Moderate density vegetation
ANNSWIM-01-26	625	4690	0	Moderate density vegetation
ANNSWIM-03-26	625	9657	0	Low density vegetation
ANNSWIM-02-26	625	14800	0	Moderate density vegetation



Total (m ²)	3125			
Total (ha)	0.3125			

^The maximum pad size has been estimated as approximately 25 m x 25 m however these are expected to be smaller and large trees will be avoided as much as possible



Table 2: Land details associated with proposed bore sites

Bore Name	Coordinates (MGA2020, Zn51)		Native Title Owners	Land use	Lot No.	Land Type	Tenure
	mE	mN					
FRASWIM-01-26	370,937	7,934,611	Karajarri	Pastoral lease – Frazier Downs Station	256	Crown allotment – Crown lease	KARAJARRI TRADITIONAL LANDS ASSOCIATION (ABORIGINAL CORPORATION) / KIMBERLEY AGRICULTURE & PASTORAL CO PTY LTD
ANNSWIM-01-26	354,990	7,893,227	Karajarri	Pastoral lease – Anna Plains Station	1561	Freehold lot – Crown lease	ANNA PLAINS CATTLE CO PTY LTD
ANNSWIM-02-26	351,539	7,879,262	Karajarri	Pastoral lease – Anna Plains Station	1561	Freehold lot – Crown lease	ANNA PLAINS CATTLE CO PTY LTD
FRASWIM-02-26	369,711	7,923,849	Karajarri	Pastoral lease – Frazier Downs Station	264	Crown allotment – Crown lease	KARAJARRI TRADITIONAL LANDS ASSOCIATION (ABORIGINAL CORPORATION) /



Bore Name	Coordinates (MGA2020, Zn51)		Native Title Owners	Land use	Lot No.	Land Type	Tenure
	mE	mN					
							KIMBERLEY AGRICULTURE & PASTORAL CO PTY LTD
ANNSWIM-03D-26	347,205	7,885,057	Karajarri	Pastoral lease – Anna Plains Station	1561	Freehold lot – Crown lease	ANNA PLAINS CATTLE CO PTY LTD
ANNSWIM-03S-26	347,210	7,885,057	Karajarri	Pastoral lease – Anna Plains Station	1561	Freehold lot – Crown lease	ANNA PLAINS CATTLE CO PTY LTD

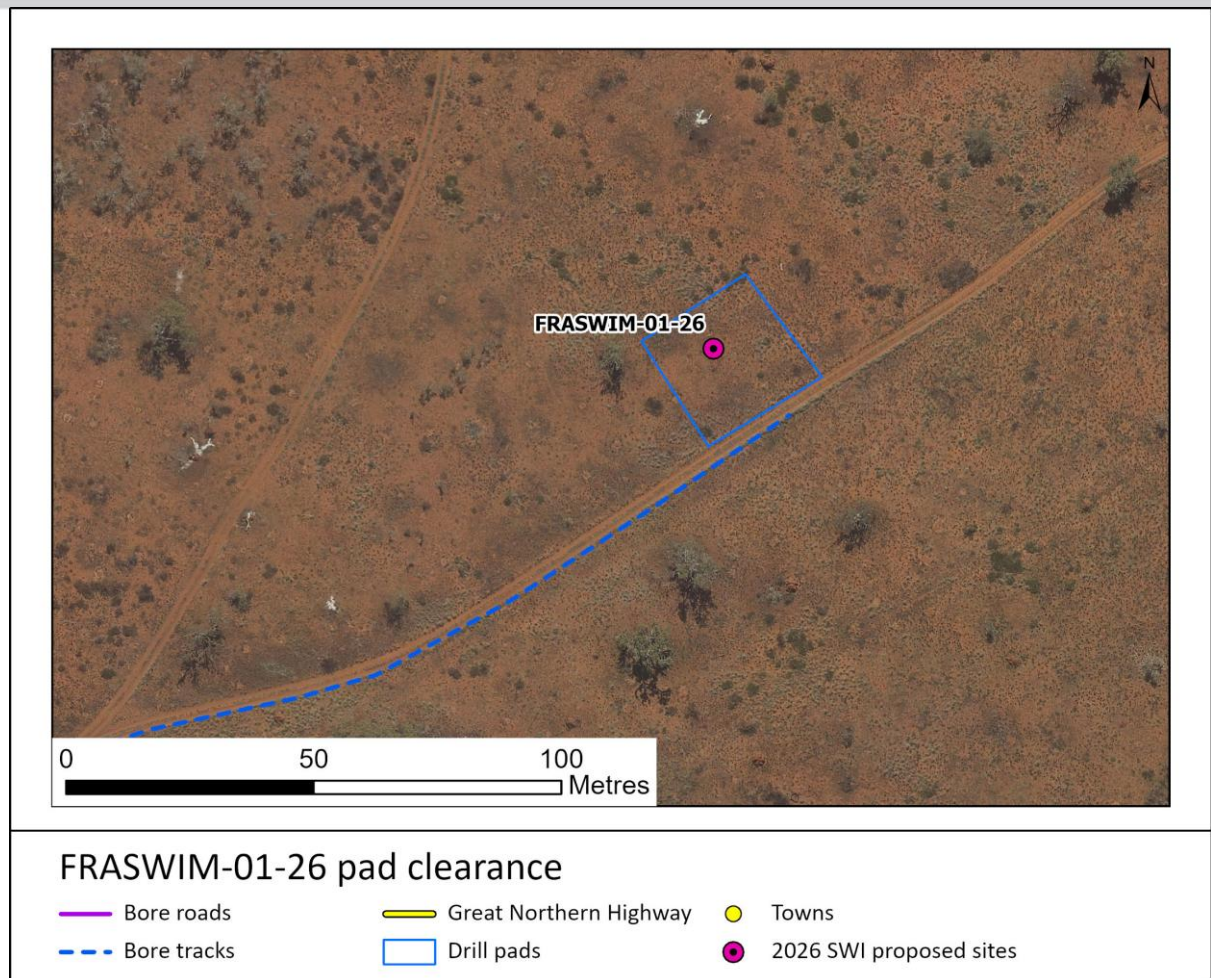


Figure 2: FRASWIM-01-26 Pad

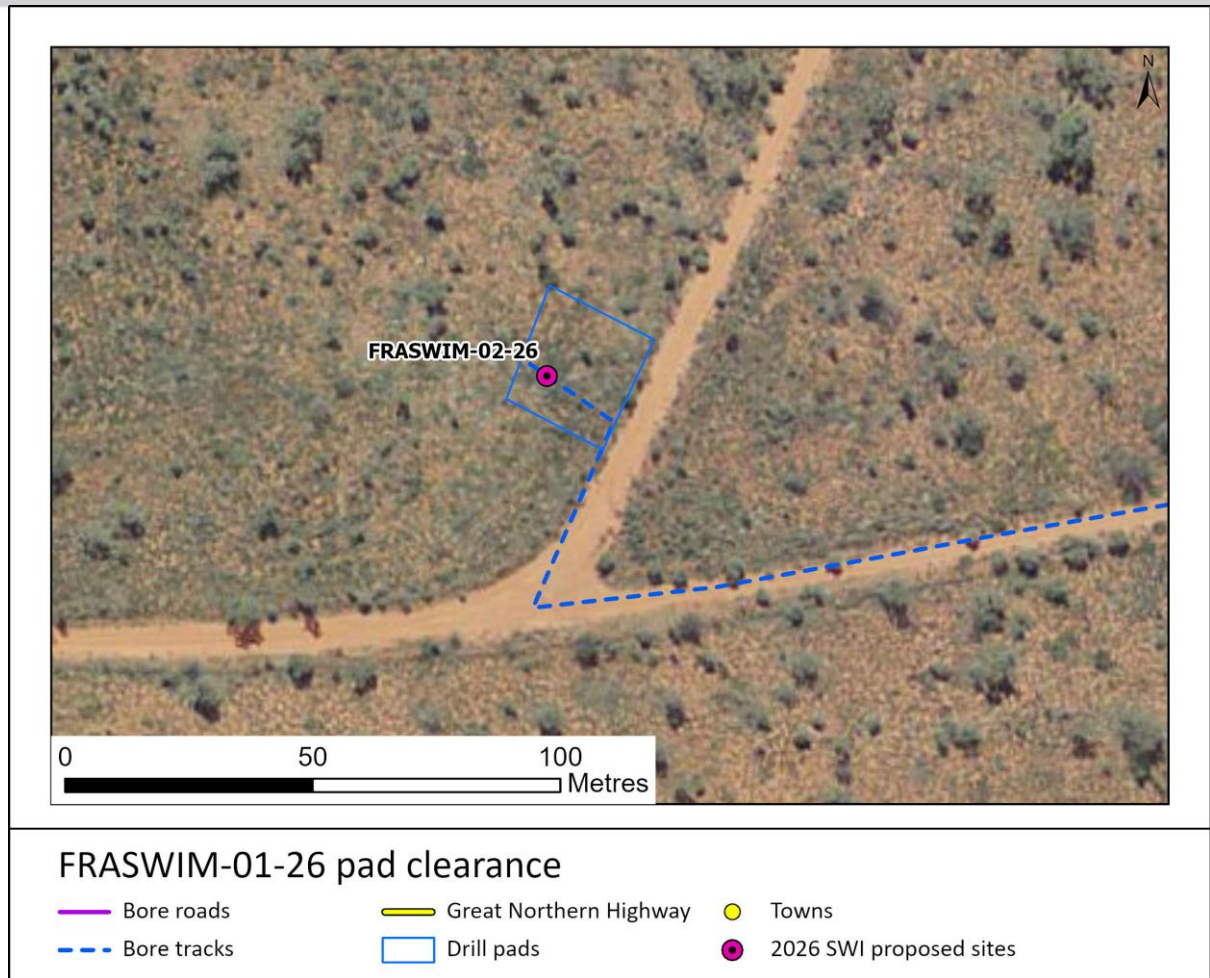


Figure 3: FRASWIM-02-26 Pad

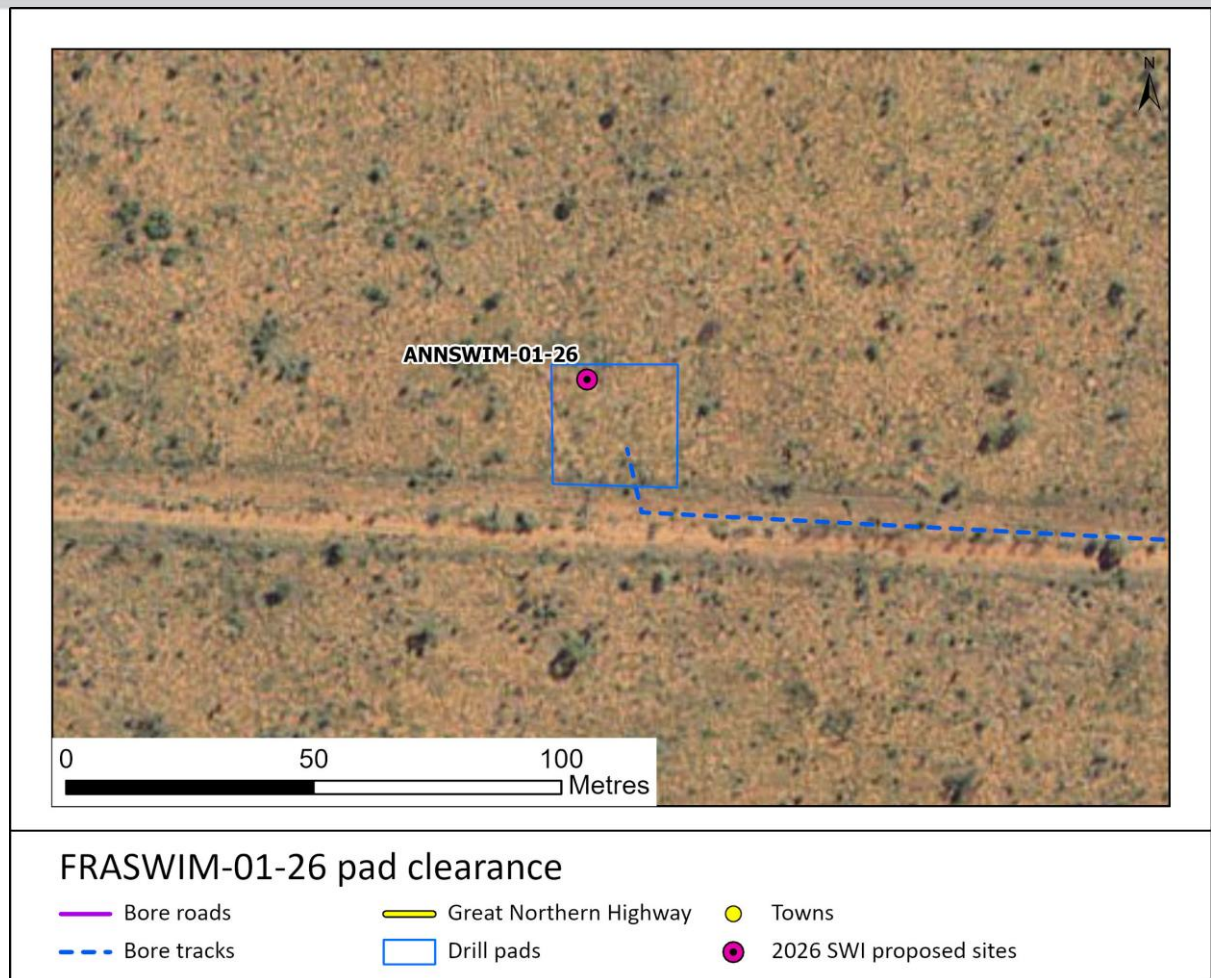


Figure 4: ANNSWIM-01-26 Pad

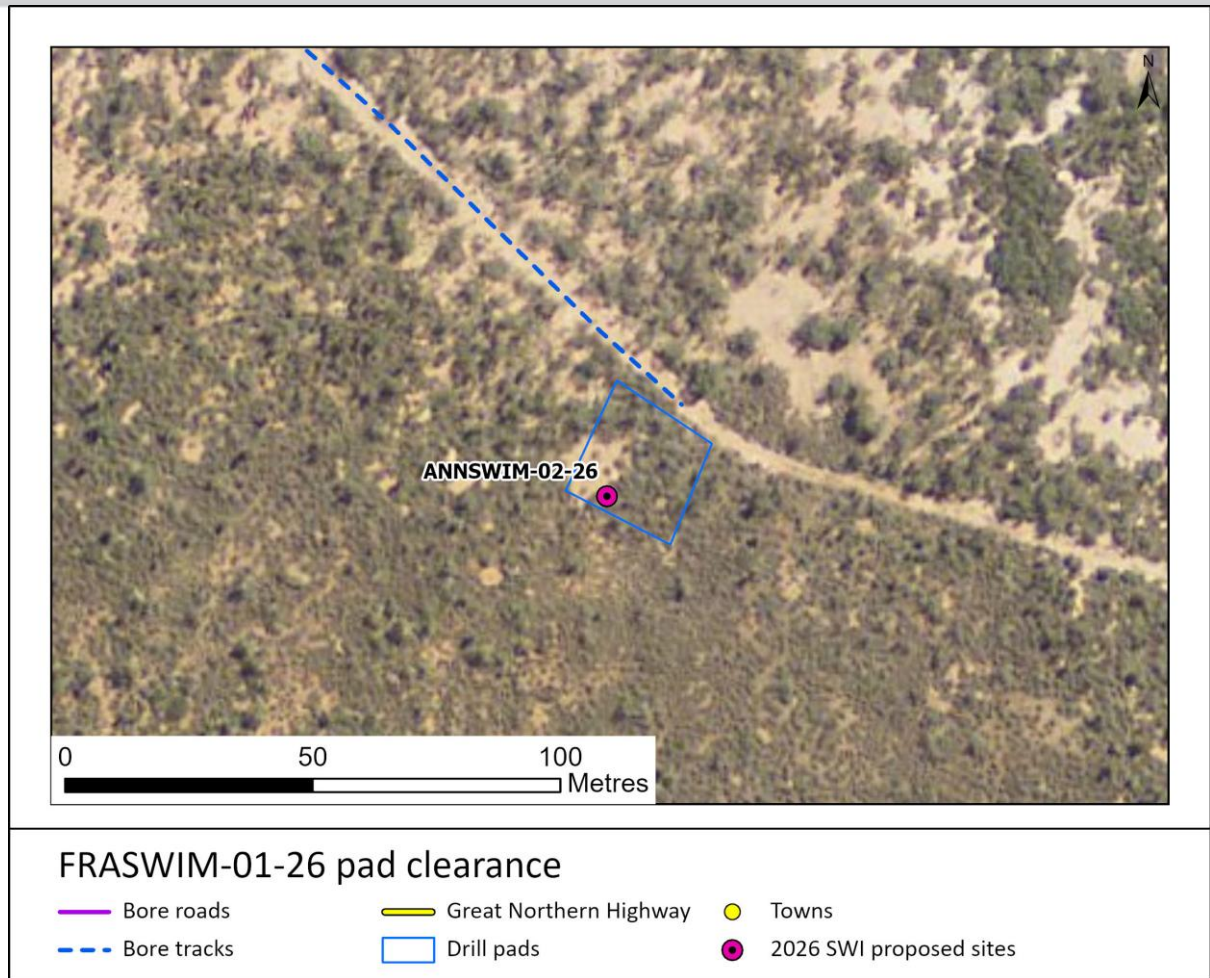


Figure 5: ANNSWIM-02-26 Pad

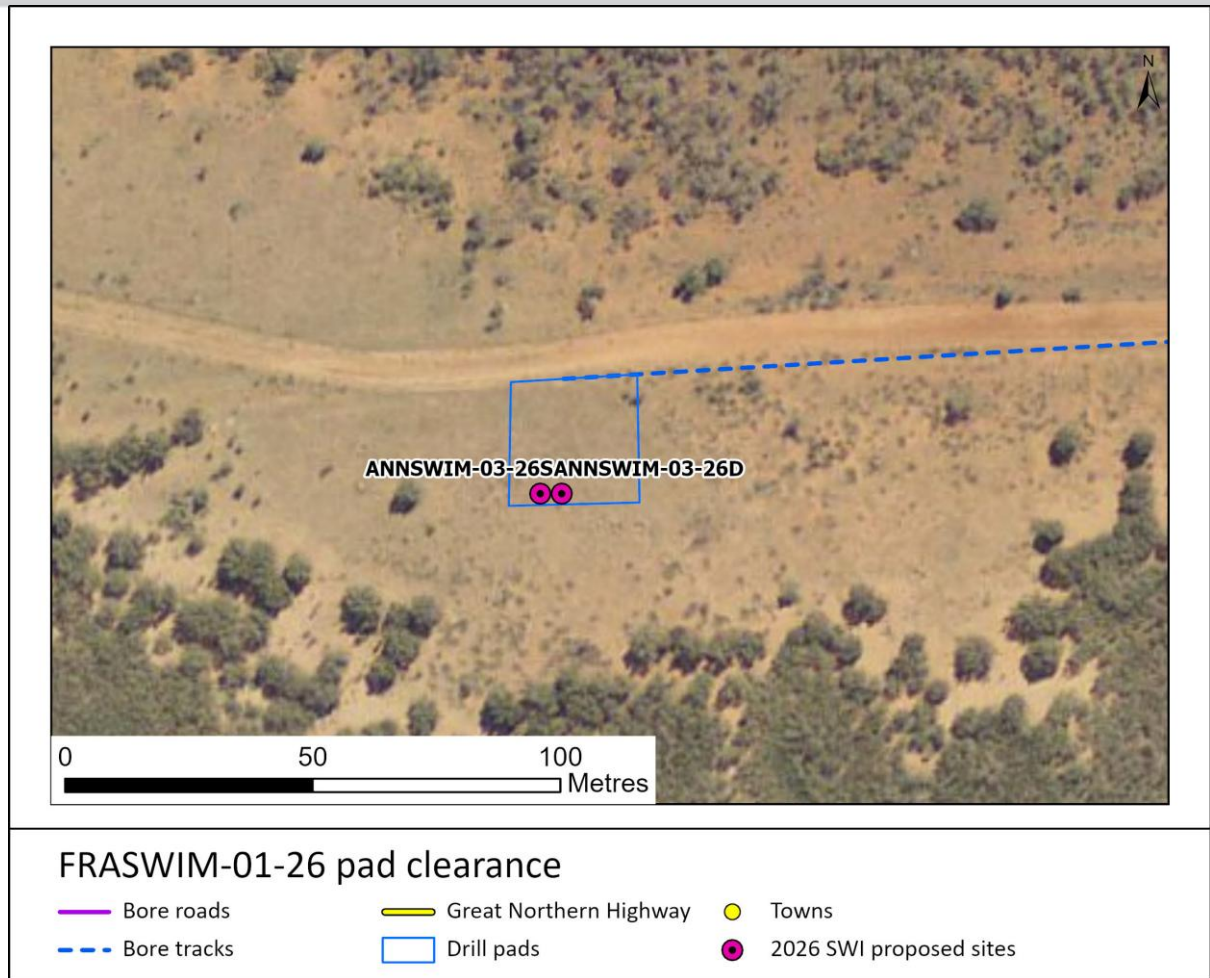


Figure 6: ANNSWIM-03-26S & ANNSWIM-03-26D Pad