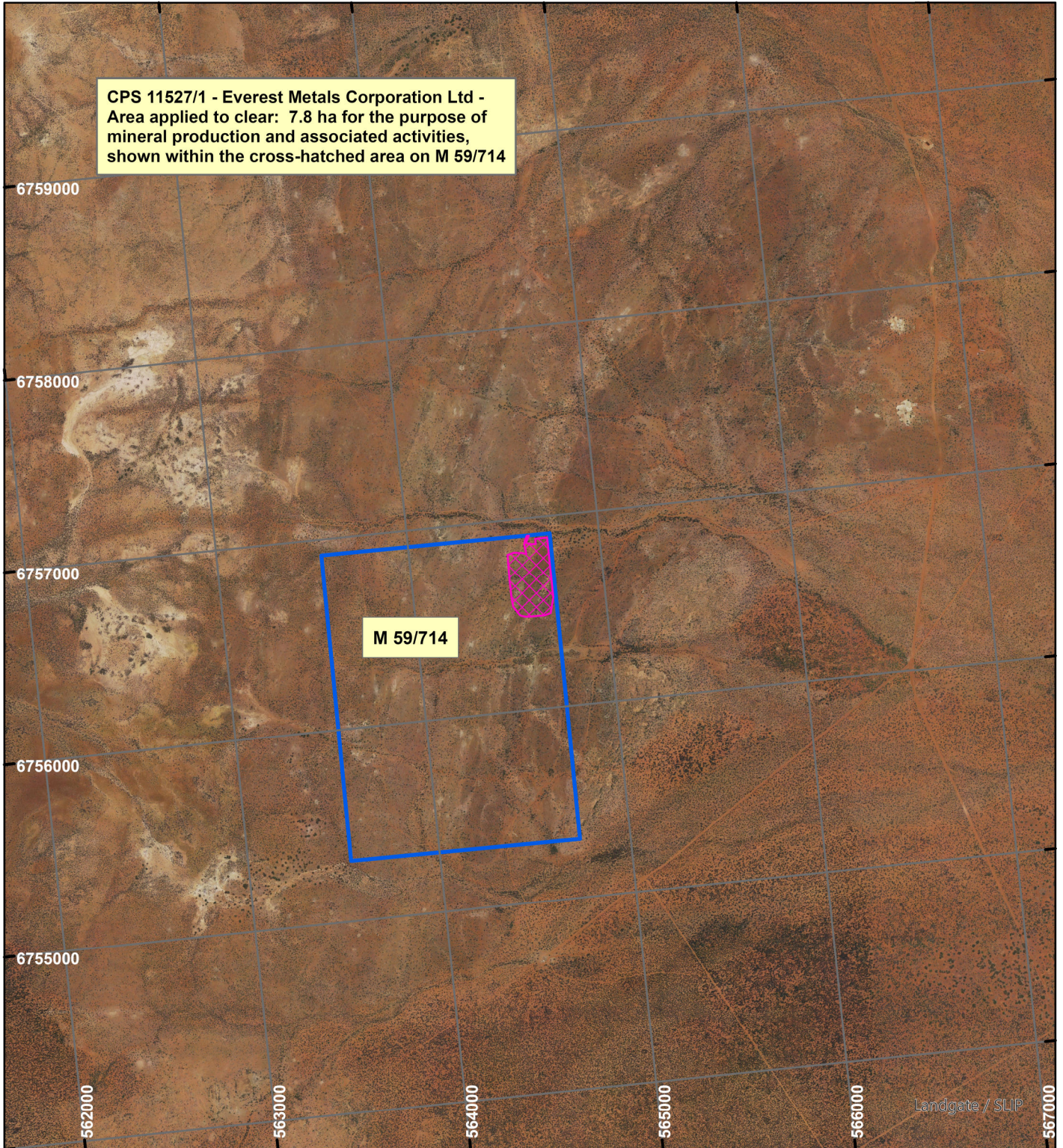
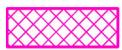


CPS 11527/1 - Everest Metals Corporation Ltd

CPS 11527/1 - Everest Metals Corporation Ltd - Area applied to clear: 7.8 ha for the purpose of mineral production and associated activities, shown within the cross-hatched area on M 59/714



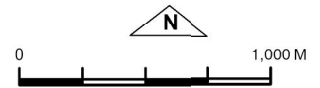
LEGEND



Clearing Instruments



Mining Tenements



Scale 1:30,000

(Approximate when reproduced at A4)

Geocentric Datum Australia 2020

Note: the data in this map have not been projected. This may result in geometric distortion or measurement inaccuracies.

..... Date

Officer with delegated authority under Section 20 of the Environmental Protection Act 1986

Information derived from this map should be confirmed with the data custodian acknowledged by the agency acronym in the legend.