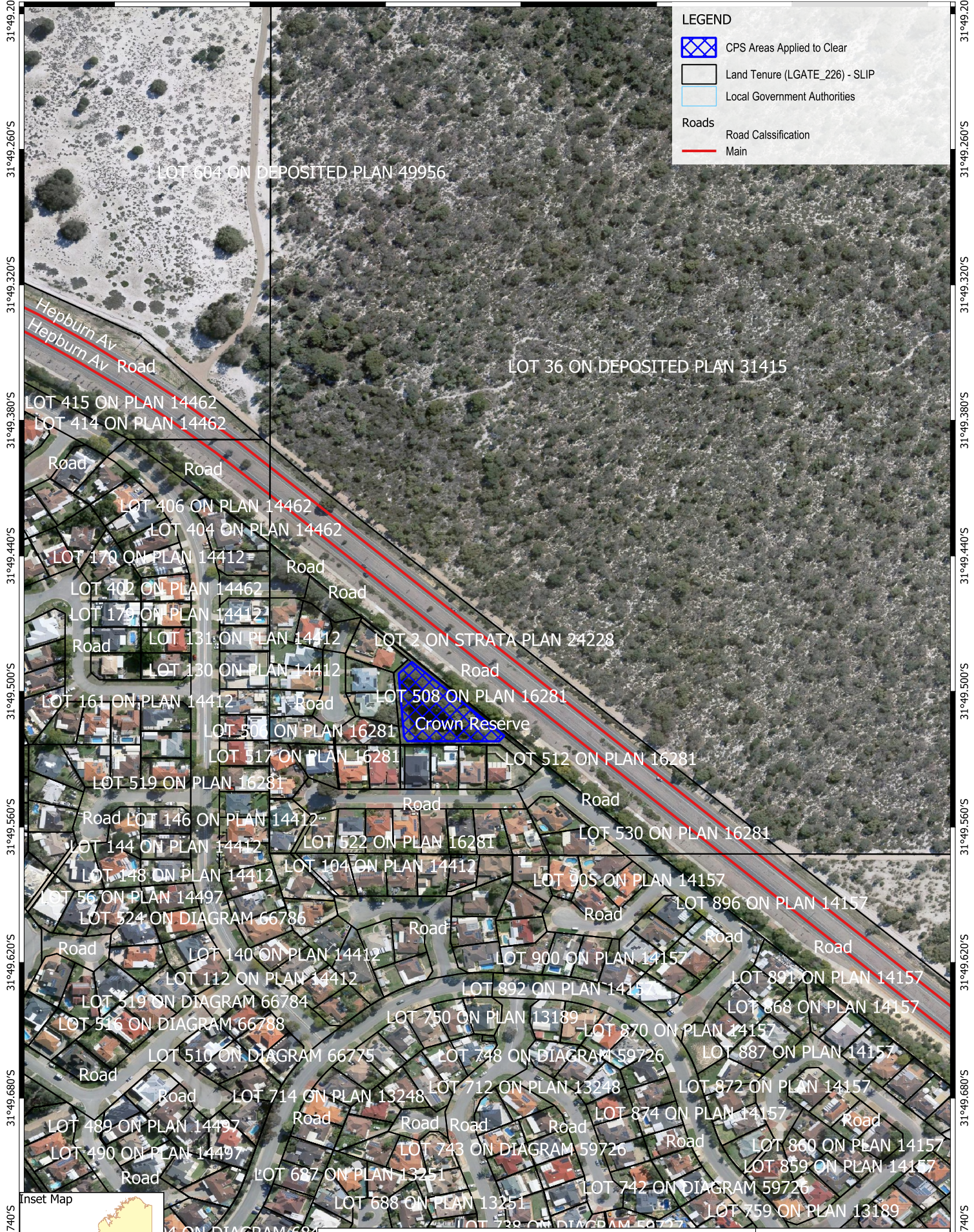


115°53.040'E 115°53.100'E 115°53.160'E 115°53.220'E 115°53.280'E 115°53.340'E 115°53.400'E

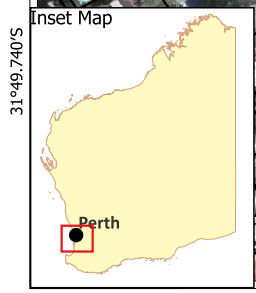


LEGEND

- CPS Areas Applied to Clear
- Land Tenure (LGATE_226) - SLIP
- Local Government Authorities

Roads

- Road Classification
- Main



CPS 11529/1 - Map U

Date Created: 13/04/2026	Version No. 1	0	57	114	171 m
Author: NVR	Reviewed by: NVR				

Scale: 1:2578
Spatial Reference: GDA2020

Project: CPS 11529/1
Information Classification: **OFFICIAL**

Sources - The author acknowledges the following datasets and their custodians in the production of this map:
Land Tenure (LGATE-226) Local Government Authority (LGA)
Roads (LGATE-012) Boundaries (LGATE-233)
WA Now Mosaic (LGATE-320)

115°53.040'E 115°53.100'E 115°53.160'E 115°53.220'E 115°53.280'E 115°53.340'E 115°53.400'E

Disclaimer: While the Department has made reasonable efforts to ensure the accuracy of this data, the department accepts no responsibility for any inaccuracies and persons relying on this data do so at their own risk. Path: \\water.local\dfs\central\shared\611-Clearing Regulation\Shared Data\CLEARING PERMITS\11529\CPS 11529-1 Validation\IGIS NVR VALIDATIONS SLIP - GDA2020.gxz