

CPS 11532/1

115°47'6"E

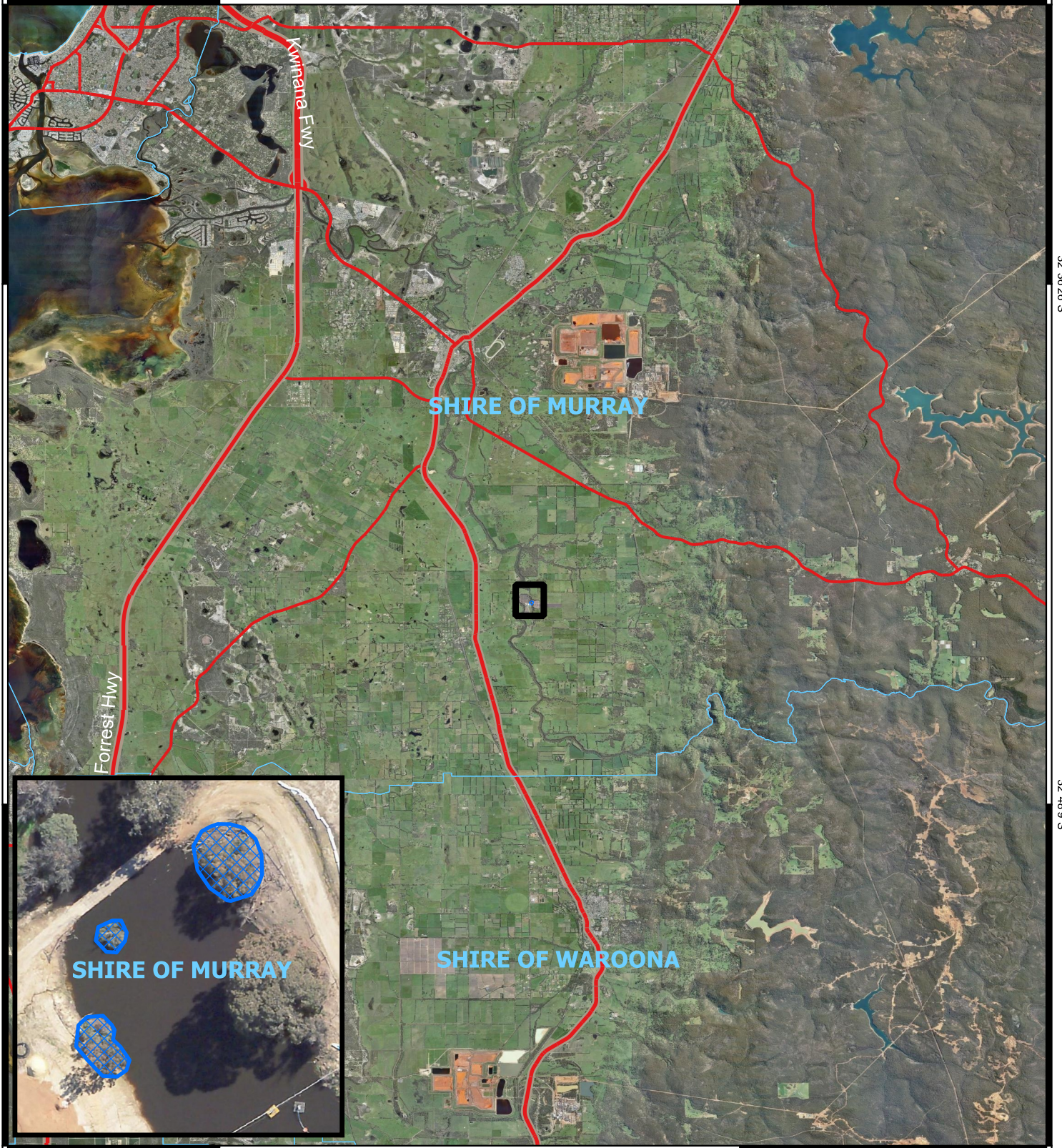
115°58'49"E

32°36'29"S

32°36'29"S

32°48'9"S




32°48'9"S



115°47'6"E

115°58'49"E

LEGEND

-  CPS areas applied to clear
-  Local Government Authorities
-  Roads



1:143,000
Projection: GDA2020



Government of Western Australia
Department of Water and Environmental Regulation

