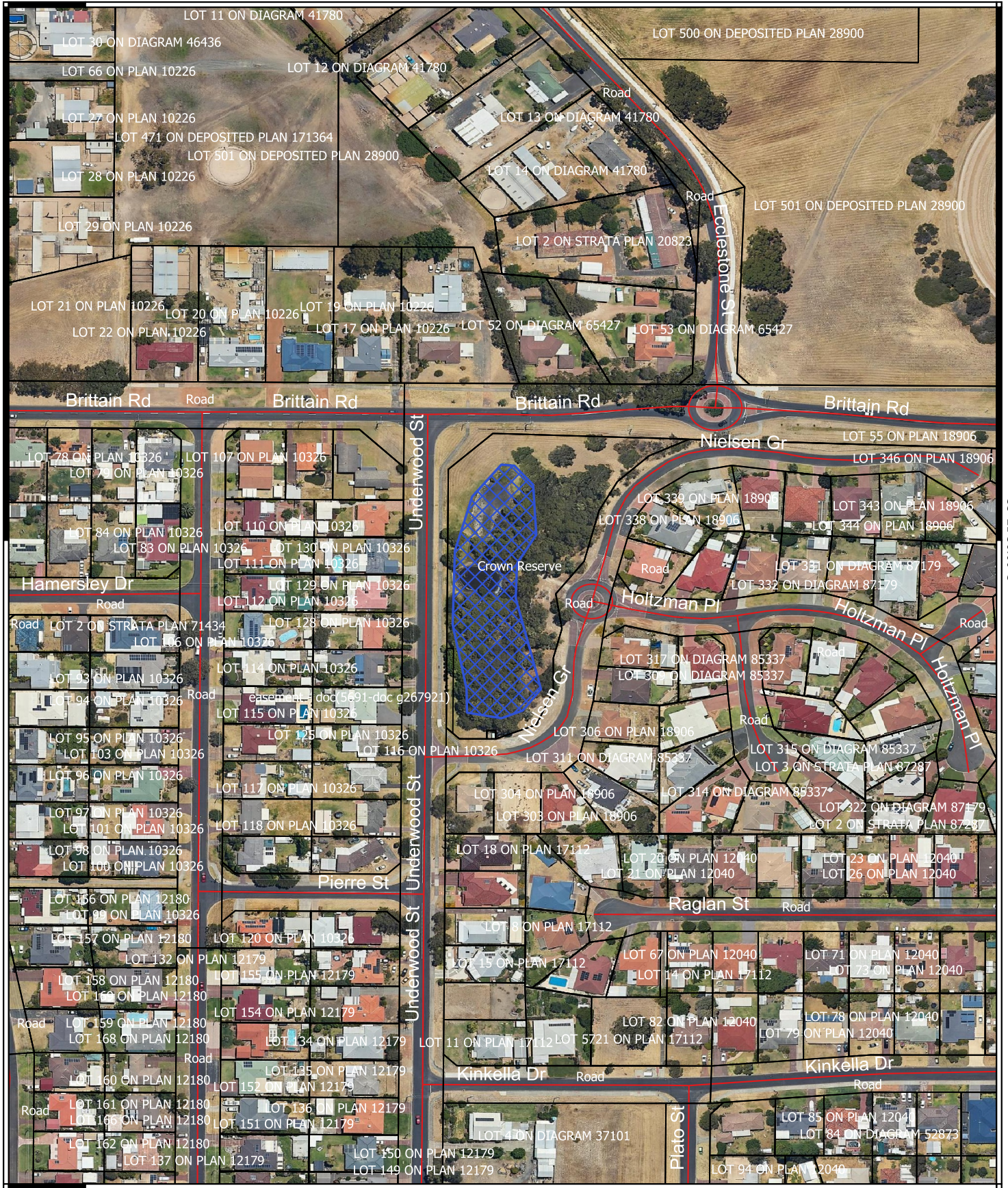



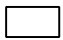

CPS 11536/1 - Map P

115°39'00.00"E



115°39'00.00"E

LEGEND

-  CPS Areas Applied to Clear
-  Land Tenure (LGATE_226) - SLIP
-  Local Government Authorities

- Roads**
-  Freeway
 -  National Highway

-  State Highway
-  Main
-  Minor

0 38.9 77.8 117 m



Scale: 1:1750
Spatial Reference:



Disclaimer: While the Department has made reasonable efforts to ensure the accuracy of this data, the department accepts no responsibility for any inaccuracies and persons relying on this data do so at their own risk.

Copyright Department of Water and Environmental Regulation, 2022. All Rights Reserved. All works and information displayed are subject to Copyright. For the reproduction or publication beyond that permitted by the Commonwealth Copyright Act 1968 written permission must be sought from the Agency.

33°21'36.00"S

33°21'36.00"S