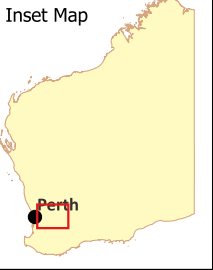
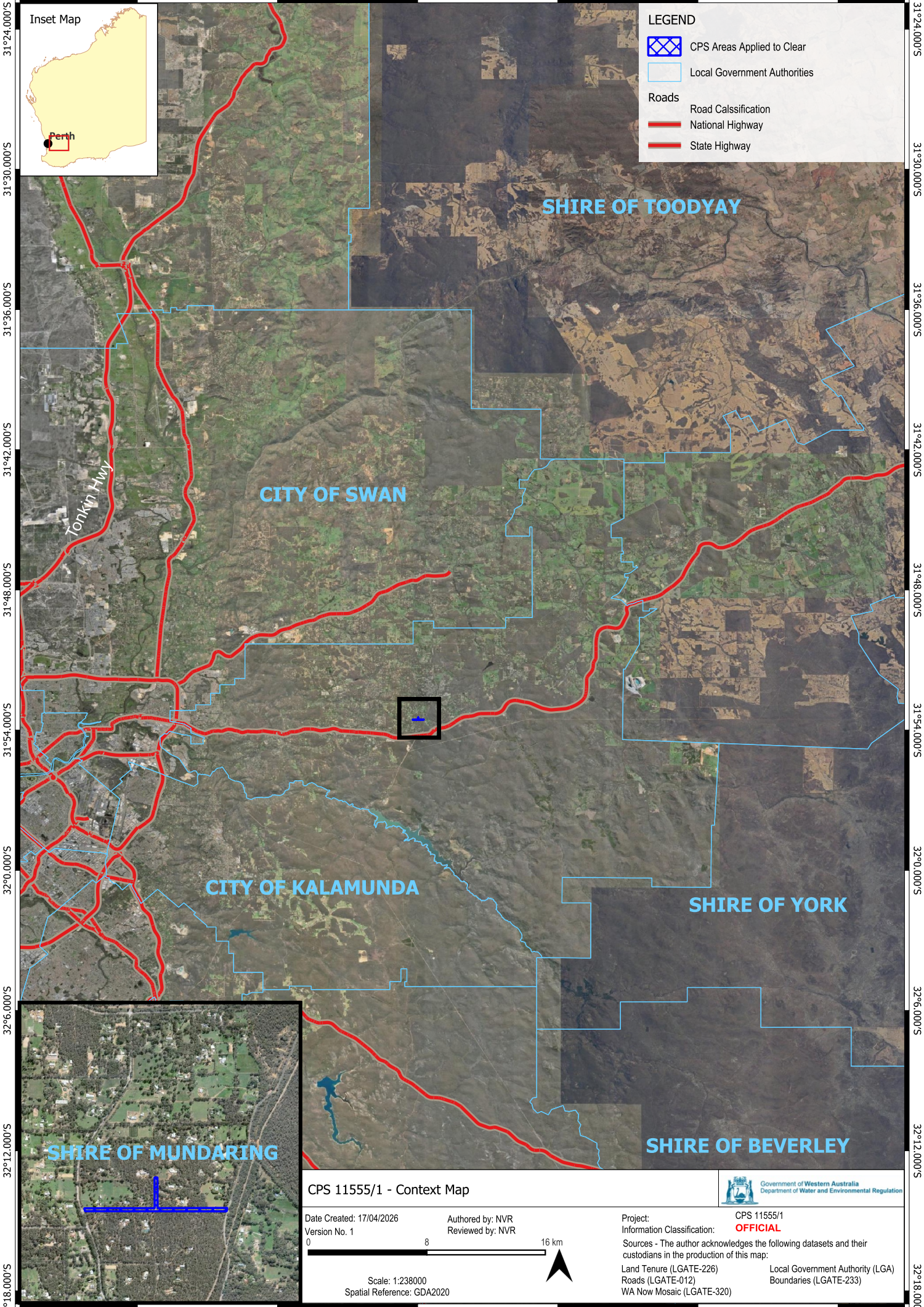


116°0.000'E 116°6.000'E 116°12.000'E 116°18.000'E 116°24.000'E 116°30.000'E



LEGEND

- CPS Areas Applied to Clear
- Local Government Authorities

Roads

- Road Classification
- National Highway
- State Highway

SHIRE OF TOODYAY

CITY OF SWAN

CITY OF KALAMUNDA

SHIRE OF YORK

SHIRE OF MUNDARING

SHIRE OF BEVERLEY

Tonkin Hwy



CPS 11555/1 - Context Map



Date Created: 17/04/2026
Version No. 1

Authored by: NVR
Reviewed by: NVR

Project: CPS 11555/1
Information Classification: **OFFICIAL**

Sources - The author acknowledges the following datasets and their custodians in the production of this map:

Land Tenure (LGATE-226) Local Government Authority (LGA)
Roads (LGATE-012) Boundaries (LGATE-233)
WA Now Mosaic (LGATE-320)



Scale: 1:238000
Spatial Reference: GDA2020