

127°48.000'E


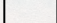

127°54.000'E

128°0.000'E



128°6.000'E



LEGEND

-  CPS11565 -Proposed Clearing Area
-  Land Tenure (LGATE-226)
-  Local Government Authorities (LGATE-233)

Roads (LGATE-012)
Road Classification

-  Minor
-  Track

22°24.000'S

22°24.000'S

22°30.000'S

22°30.000'S

LOT 501 ON DEPOSITED PLAN 413360

22°36.000'S

22°36.000'S

SHIRE OF EAST PILBARA

Crown Reserve

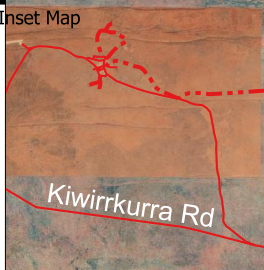
22°42.000'S

22°42.000'S

LOT 3 ON DEPOSITED PLAN 91733

22°48.000'S

22°48.000'S



CPS 11565/1 - Map


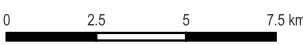
Date Created: 06/05/2026 Authored by: NVR
Version No. 1 Reviewed by: NVR

Scale: 1:169903.325262
Spatial Reference: GDA2020

Government of Western Australia
Department of Water and Environmental Regulation

CPS 11565/1
OFFICIAL

Project:
Information Classification:
Sources - The author acknowledges the datasets used in the production of this map and their custodians, as referenced in the Legend above.

127°48.000'E

127°54.000'E

128°0.000'E

128°6.000'E

Disclaimer: While the Department has made reasonable efforts to ensure the accuracy of this data, the department accepts no responsibility for any inaccuracies and persons relying on this data do so at their own risk.

Path: T:\shared\611-Clearing Regulation\Shared Data\CLEARING PERMITS\11565\CPS 11565-1 - Validation\OGIS NVR VALIDATIONS SLIP - GDA2020.gxz