


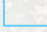
115°30.000'E 115°36.000'E 115°42.000'E 115°48.000'E 115°54.000'E 116°0.000'E 116°6.000'E 116°12.000'E 116°18.000'E

32°24.000'S
32°30.000'S
32°36.000'S
32°42.000'S
32°48.000'S
32°54.000'S
33°0.000'S
33°6.000'S
33°12.000'S
33°18.000'S
33°24.000'S
33°30.000'S
33°36.000'S
33°42.000'S

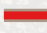
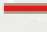

32°24.000'S
32°30.000'S
32°36.000'S
32°42.000'S
32°48.000'S
32°54.000'S
33°0.000'S
33°6.000'S
33°12.000'S
33°18.000'S
33°24.000'S
33°30.000'S
33°36.000'S
33°42.000'S

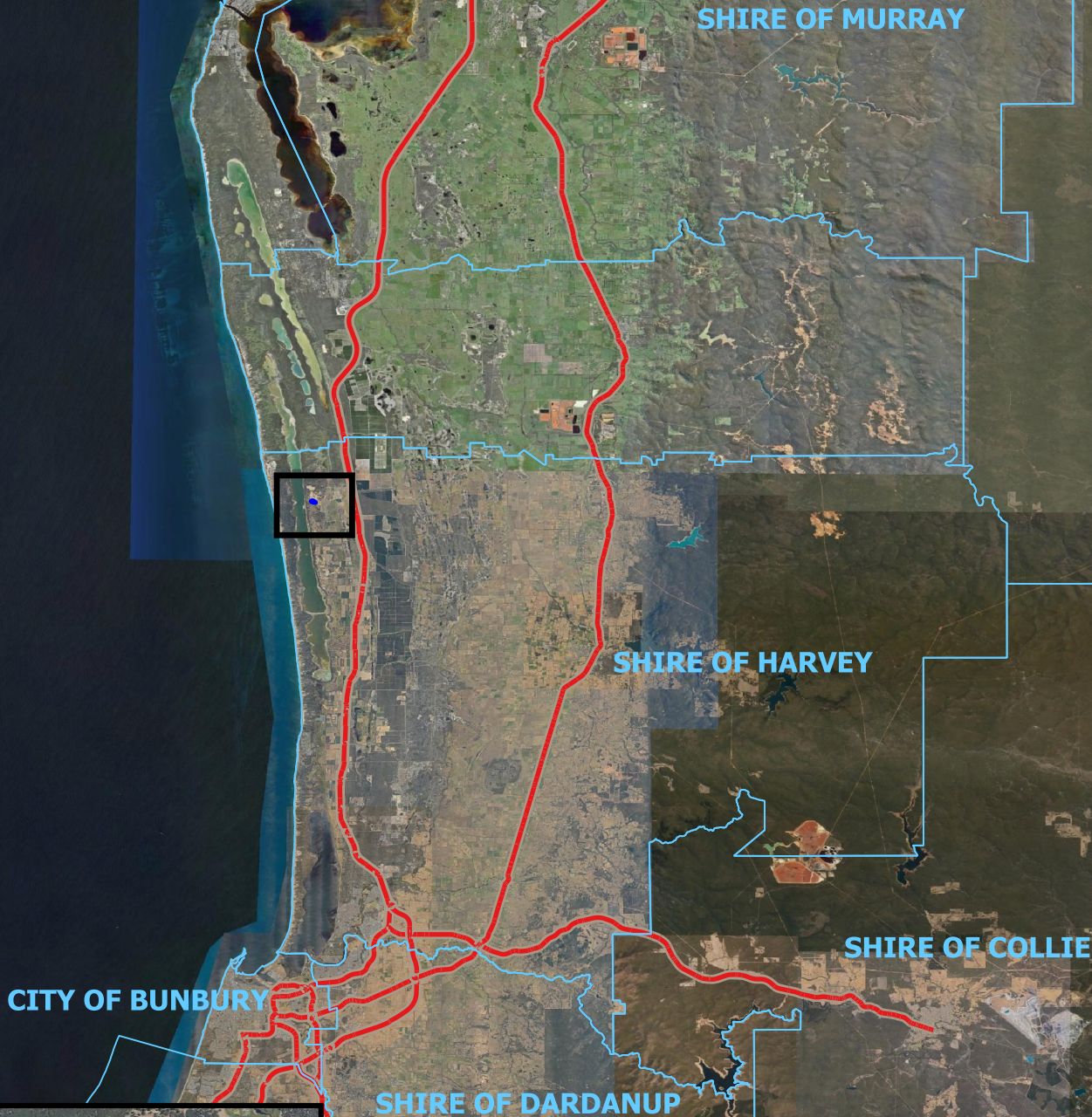


LEGEND

-  CPS Areas Applied to Clear (DWER-075)
-  Local Government Authorities (LGATE-233)

Roads (LGATE-012)
Road Classification

-  Freeway
-  National Highway
-  State Highway



CPS 11557/1 - Context Map



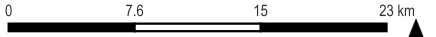
Date Created: 06/05/2026
Version No. 1

Authored by: NVR
Reviewed by: NVR

Project:
Information Classification:

CPS 11557/1
OFFICIAL

Sources - The author acknowledges the datasets used in the production of this map and their custodians, as referenced in the Legend above.



Scale: 1:342795
Spatial Reference: GDA2020



115°30.000'E 115°36.000'E 115°42.000'E 115°48.000'E 115°54.000'E 116°0.000'E 116°6.000'E 116°12.000'E 116°18.000'E

Disclaimer: While the Department has made reasonable efforts to ensure the accuracy of this data, the department accepts no responsibility for any inaccuracies and persons relying on this data do so at their own risk.
Path: \\water.local\dfs\sites\central\shared\611-Clearing Regulation\Shared Data\CLEARING PERMITS\11577\CPS 11577-1 - Validation\APP-0035090 - CPS 11577-1 - QGIS NVR VALIDATIONS SLIP - GDA2020.gxz