

115°48.000'E

115°54.000'E

116°0.000'E

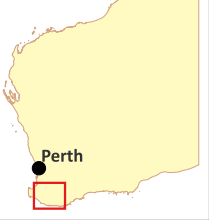
31°12.000'S

31°18.000'S

31°12.000'S

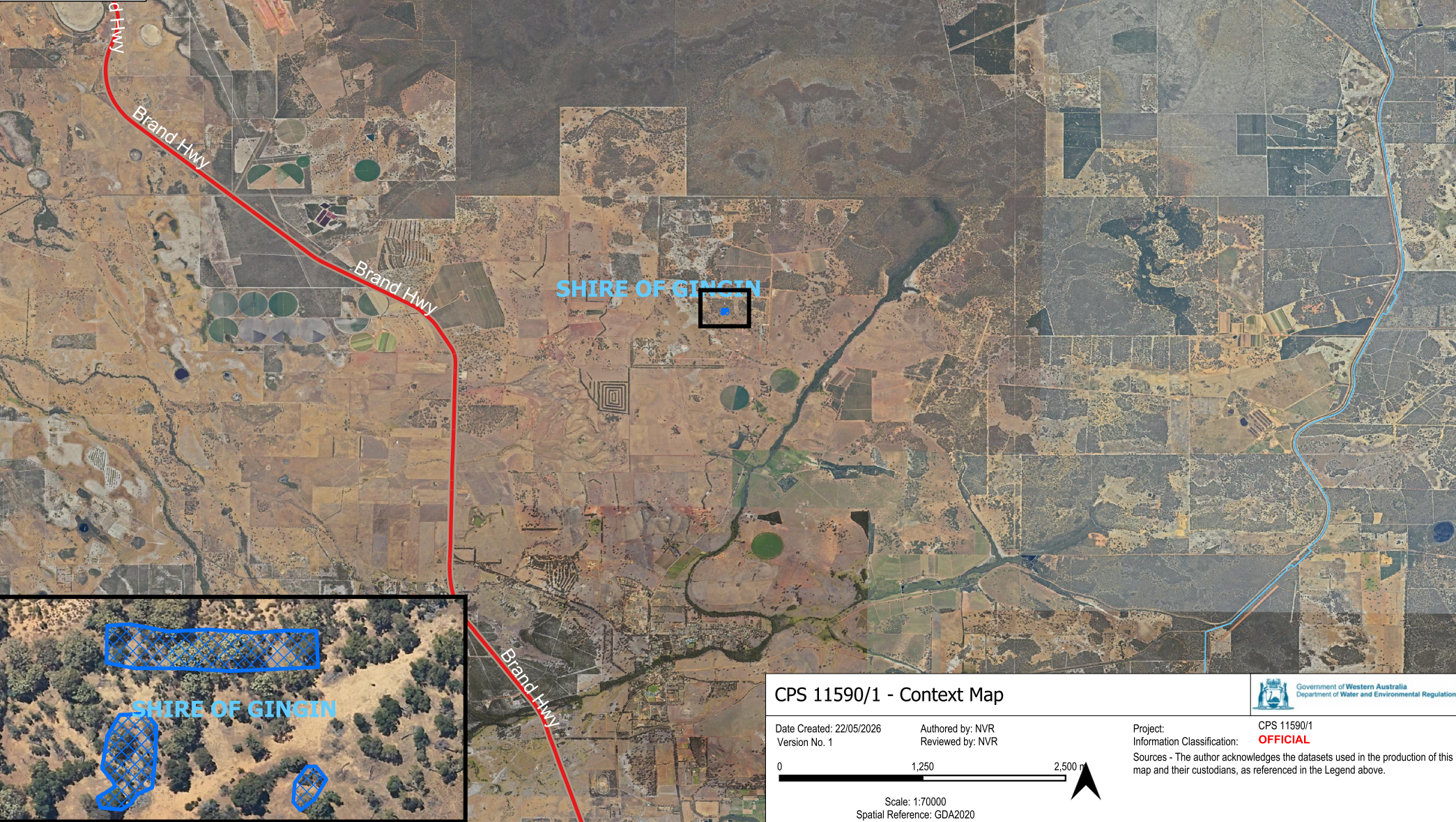
31°18.000'S

Inset Map



LEGEND

- CPS areas applied to clear (DWER-075)
- Local Government Authorities (LGATE-233)
- Road Classification
- State Highway

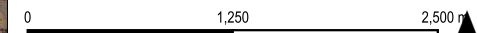


CPS 11590/1 - Context Map



Date Created: 22/05/2026    Authored by: NVR  
Version No. 1                      Reviewed by: NVR

Project: CPS 11590/1  
Information Classification: **OFFICIAL**  
Sources - The author acknowledges the datasets used in the production of this map and their custodians, as referenced in the Legend above.



Scale: 1:70000  
Spatial Reference: GDA2020



115°48.000'E

115°54.000'E

116°0.000'E

Disclaimer: While the Department has made reasonable efforts to ensure the accuracy of this data, the department accepts no responsibility for any inaccuracies and persons relying on this data do so at their own risk.

Path: T:\611-Clearing Regulation\Shared Data\CLEARING PERMITS\11590\CPS 11590 -1- Validation\QGIS\CPS 11590 OGIS NVR VALIDATIONS SLIP - GDA2020.gzg