


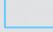
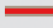
115°0.000'E

115°6.000'E

115°12.000'E

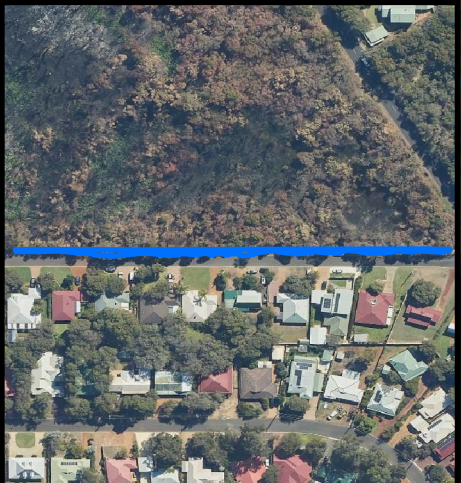
Inset Map

LEGEND

-  CPS areas applied to clear (DWER-075)
-  Local Government Authorities (LGATE-233)
- Roads (LGATE-012)
-  State Highway

33°30.000'S  
33°36.000'S  
33°42.000'S  
33°48.000'S  
33°54.000'S

33°30.000'S  
33°36.000'S  
33°42.000'S  
33°48.000'S  
33°54.000'S

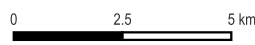


CPS 11598/1 - Context Map



Date Created: 29/05/2026      Authored by: NVR  
Version No. 1                      Reviewed by: NVR

Project: CPS 11598/1  
Information Classification: **OFFICIAL**  
Sources - The author acknowledges the datasets used in the production of this map and their custodians, as referenced in the Legend above.



Scale: 1:130000  
Spatial Reference: GDA2020



115°0.000'E

115°6.000'E

115°12.000'E

Disclaimer: While the Department has made reasonable efforts to ensure the accuracy of this data, the department accepts no responsibility for any inaccuracies and persons relying on this data do so at their own risk.

Path: T:\611-Clearing Regulation\Shared Data\CLEARING PERMITS\11598\CPS 11598-1 - Validation\OGIS NVR VALIDATIONS SLIP - GDA2020.gxz