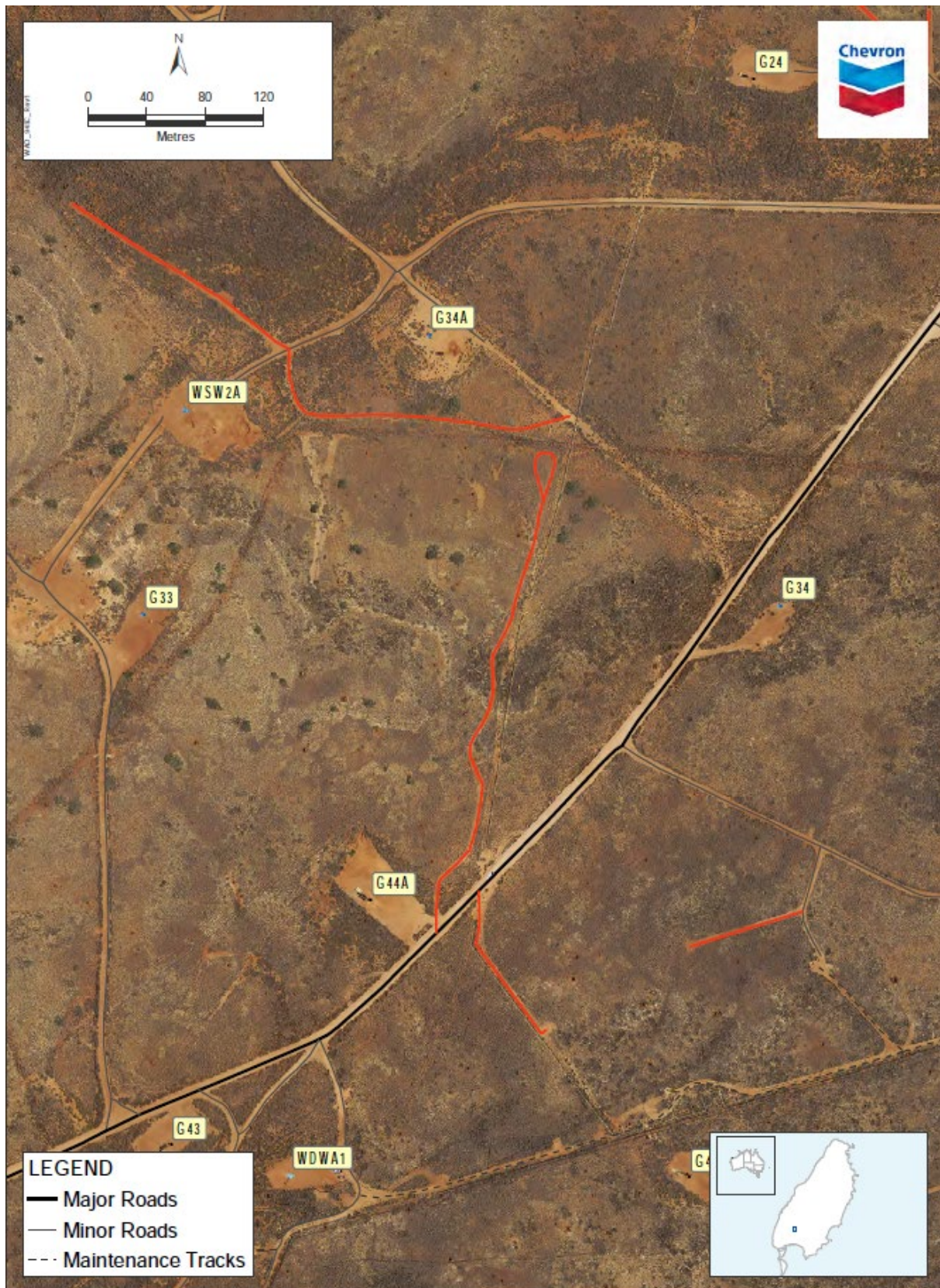


## Clearing Permit 123/7 Amendment Application: Proposed Access Tracks to be added to the Barrow Island Road and Maintenance Track Network



**Figure 1: Groundwater Monitoring Wells Access Tracks to be added to the BWI Road and Maintenance Track Network, Annexure 6 of CPS123/7**





**Figure 2: Groundwater Monitoring Wells Access Tracks and Existing Maintenance Tracks to be added to the BWI Road and Maintenance Track Network, Annexure 6 of CPS123/7**





**Figure 3: Groundwater Monitoring Wells Access Tracks to be added to the BWI Road and Maintenance Track Network, Annexure 6 of CPS123/7**





**Figure 4: Maintenance Access Track to be added to the BWI Road and Maintenance Track Network, Annexure 6 of CPS123/7**





**Figure 5: Maintenance Access Track to be added to the BWI Road and Maintenance Track Network, Annexure 6 of CPS123/7**





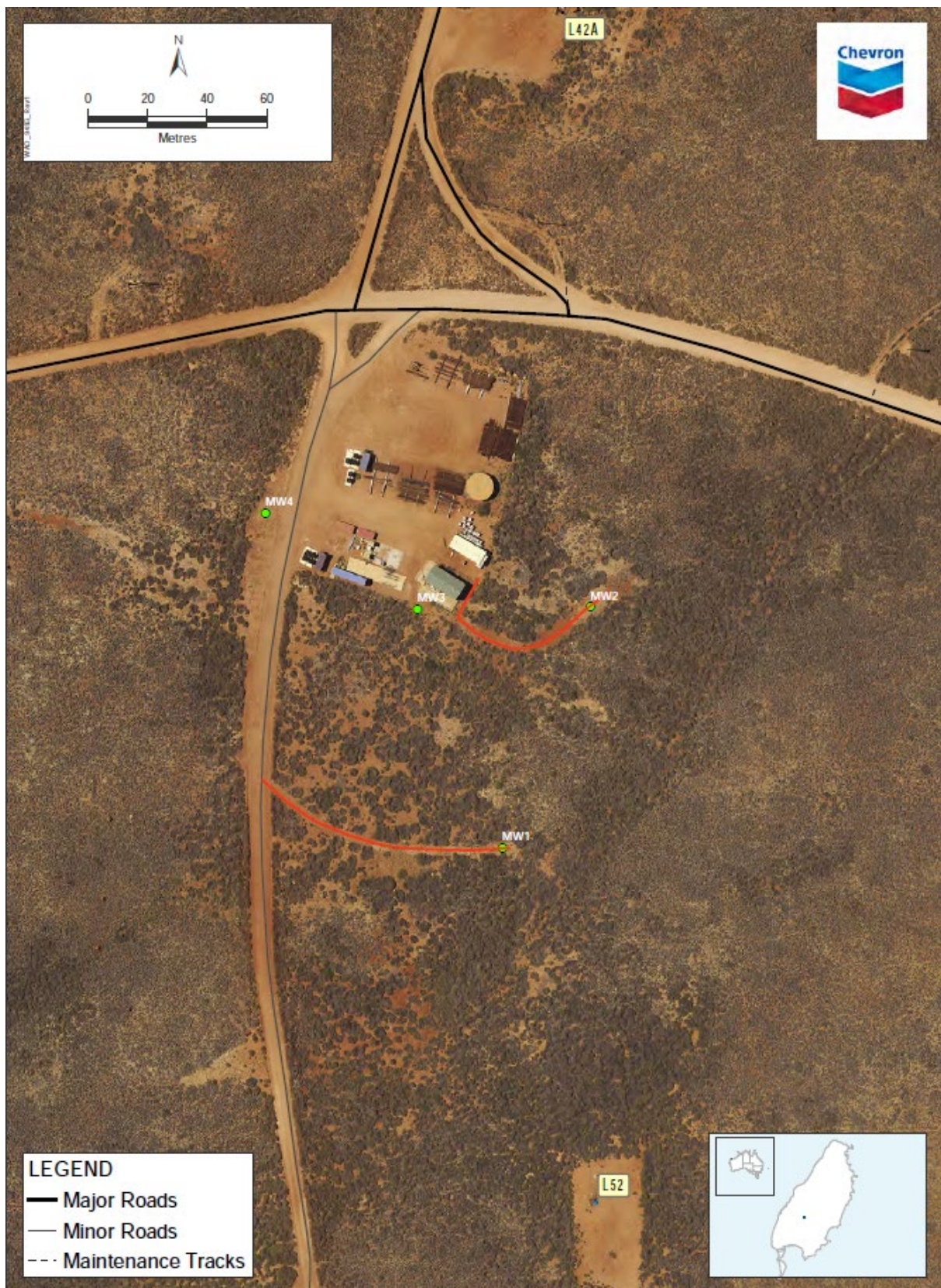
**Figure 6: Groundwater Monitoring Wells Access Tracks to be added to the BWI Road and Maintenance Track Network, Annexure 6 of CPS123/7**





**Figure 7: Groundwater Monitoring Wells Access Tracks to be added to the BWI Road and Maintenance Track Network, Annexure 6 of CPS123/7**





**Figure 8: Groundwater Monitoring Wells Access Tracks to be added to the BWI Road and Maintenance Track Network, Annexure 6 of CPS123/7**





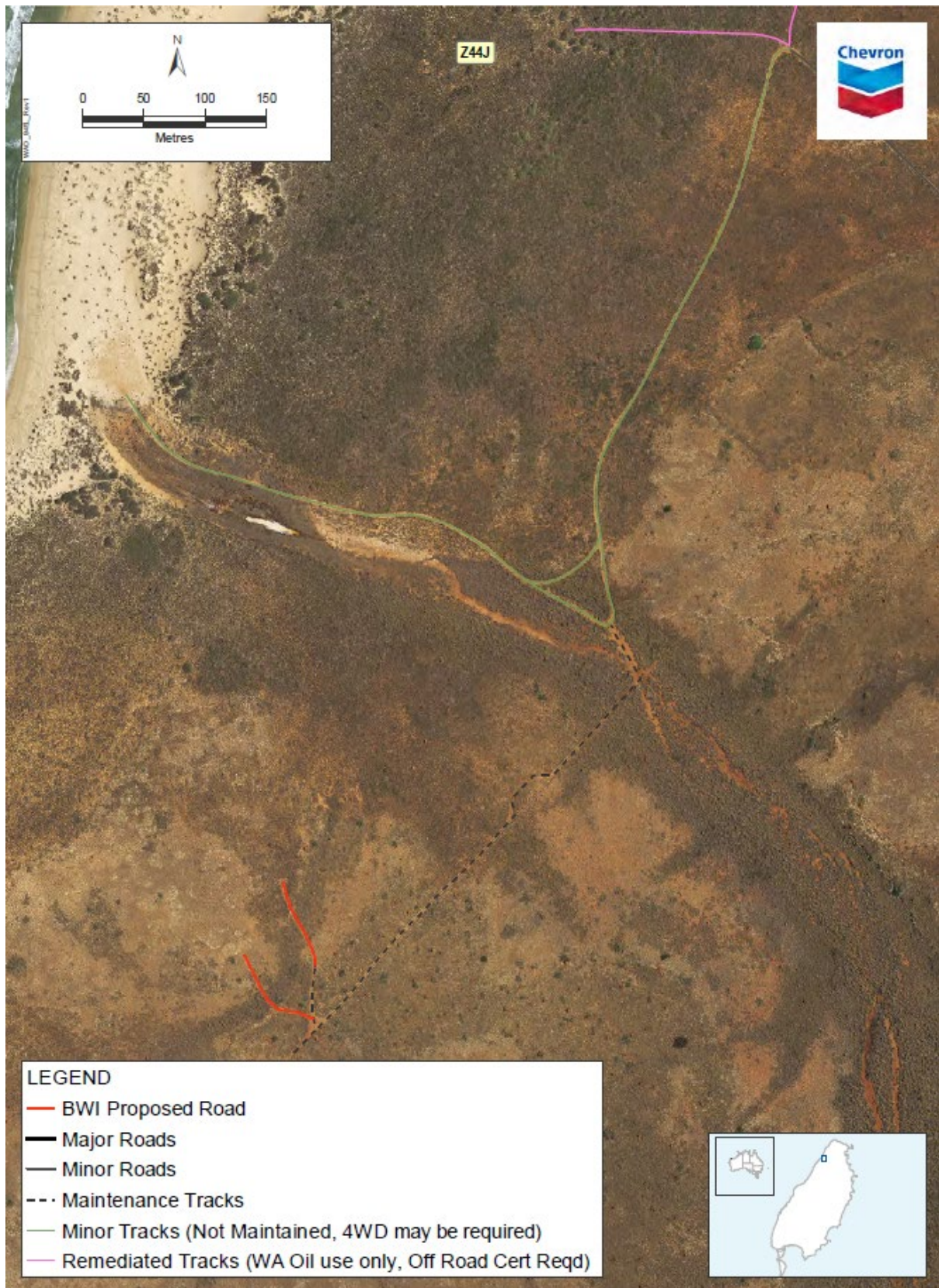
**Figure 9: Groundwater Monitoring Wells Access Tracks to be added to the BWI Road and Maintenance Track Network, Annexure 6 of CPS123/7**





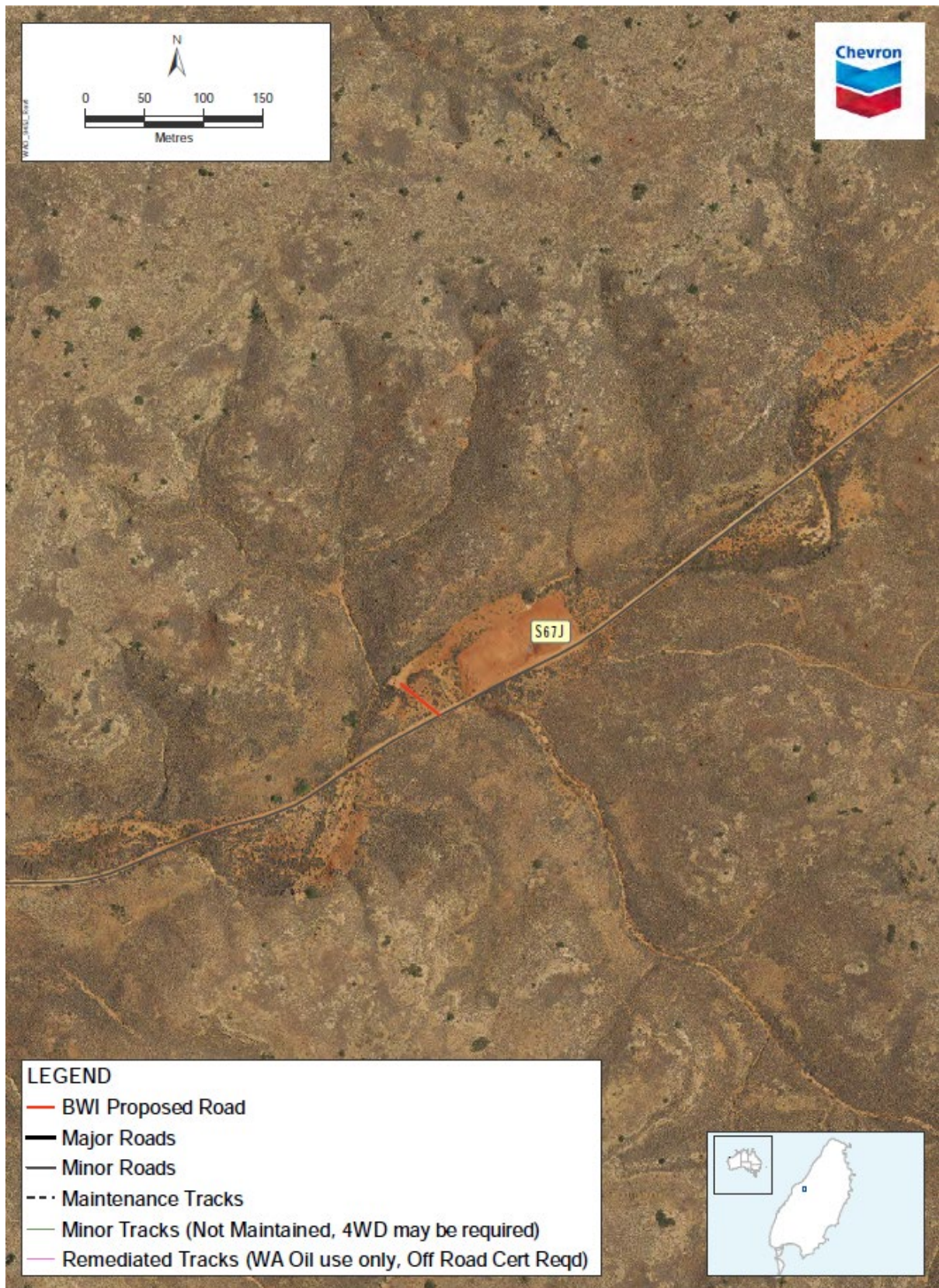
**Figure 10: Maintenance Access Tracks to be added to the BWI Road and Maintenance Track Network, Annexure 6 of CPS123/7**





**Figure 11: Groundwater Monitoring Wells Access Tracks to be added to the BWI Road and Maintenance Track Network, Annexure 6 of CPS123/7**





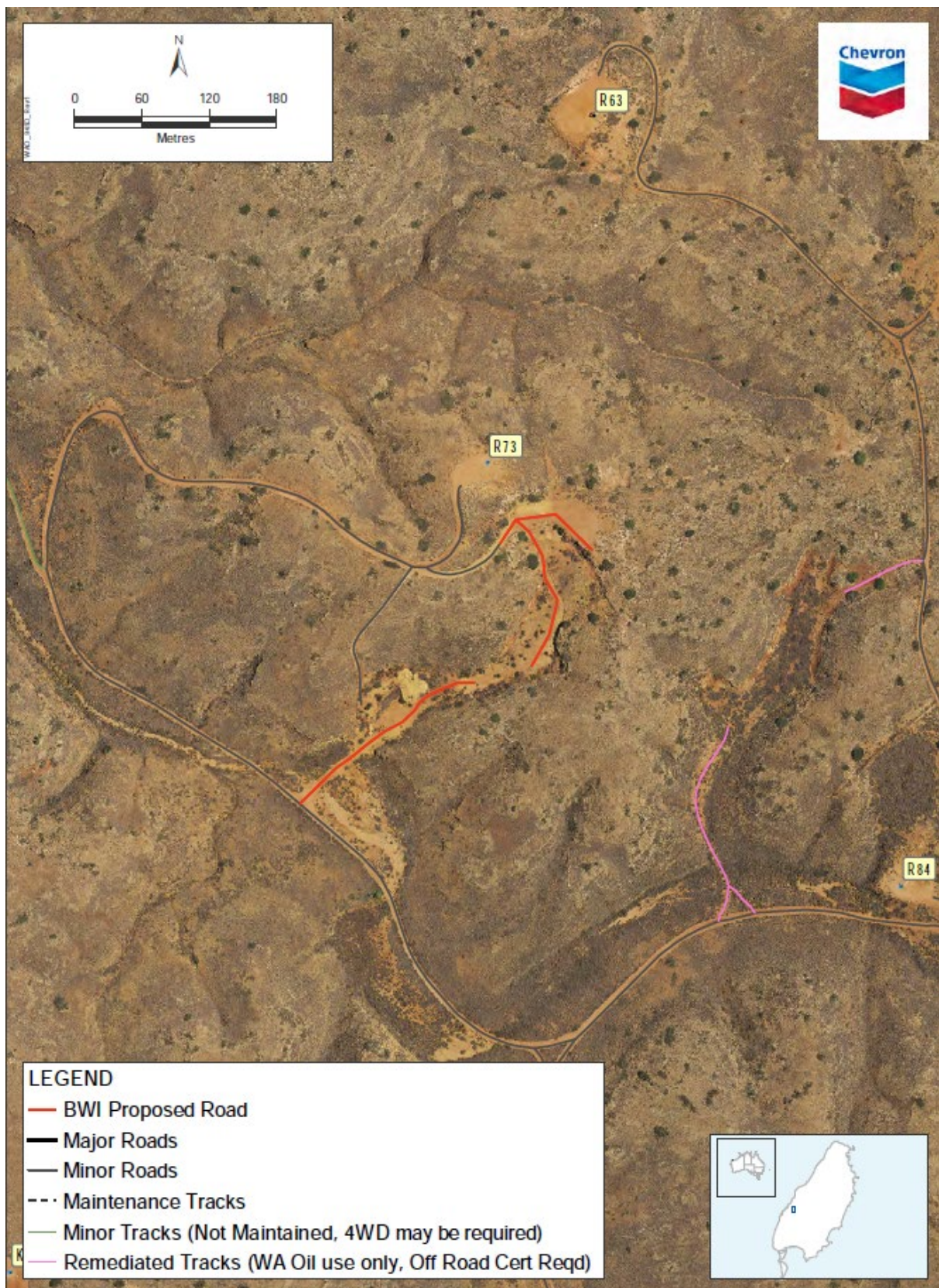
**Figure 12: Maintenance Access Track to be added to the BWI Road and Maintenance Track Network, Annexure 6 of CPS123/7**





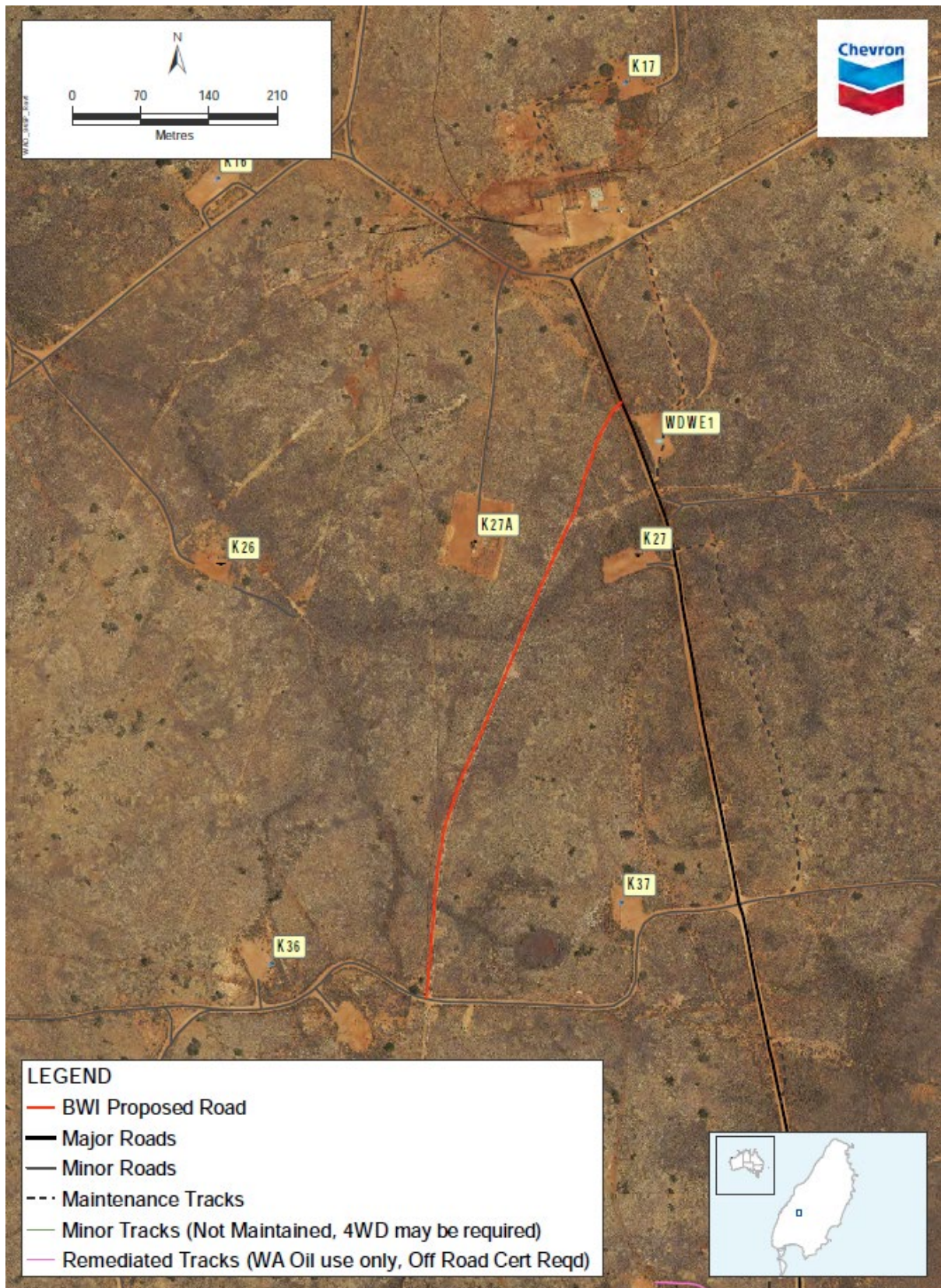
**Figure 13: Groundwater Monitoring Wells Access Tracks to be added to the BWI Road and Maintenance Track Network, Annexure 6 of CPS123/7**





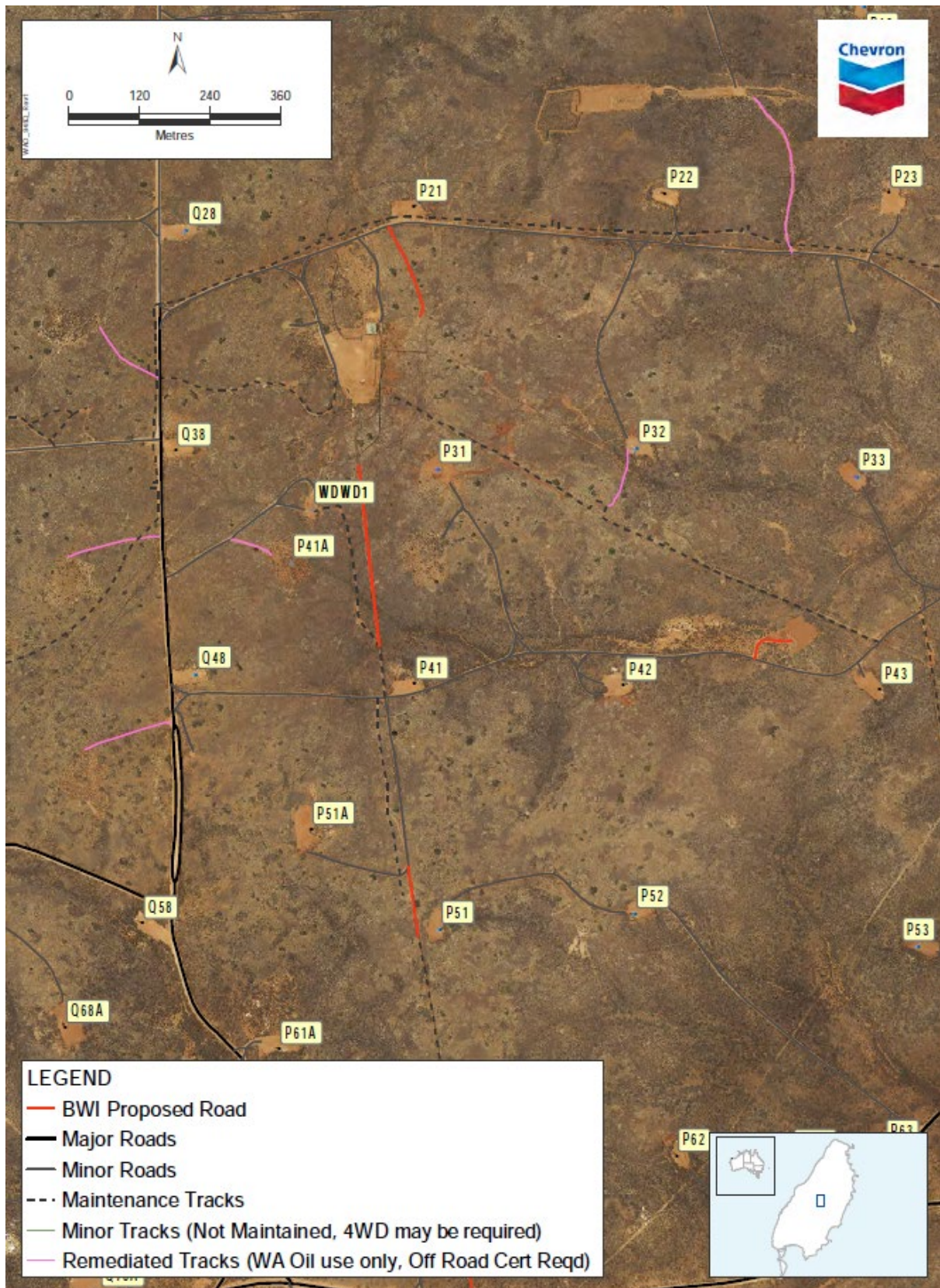
**Figure 14: Maintenance Access Tracks to be added to the BWI Road and Maintenance Track Network, Annexure 6 of CPS123/7**





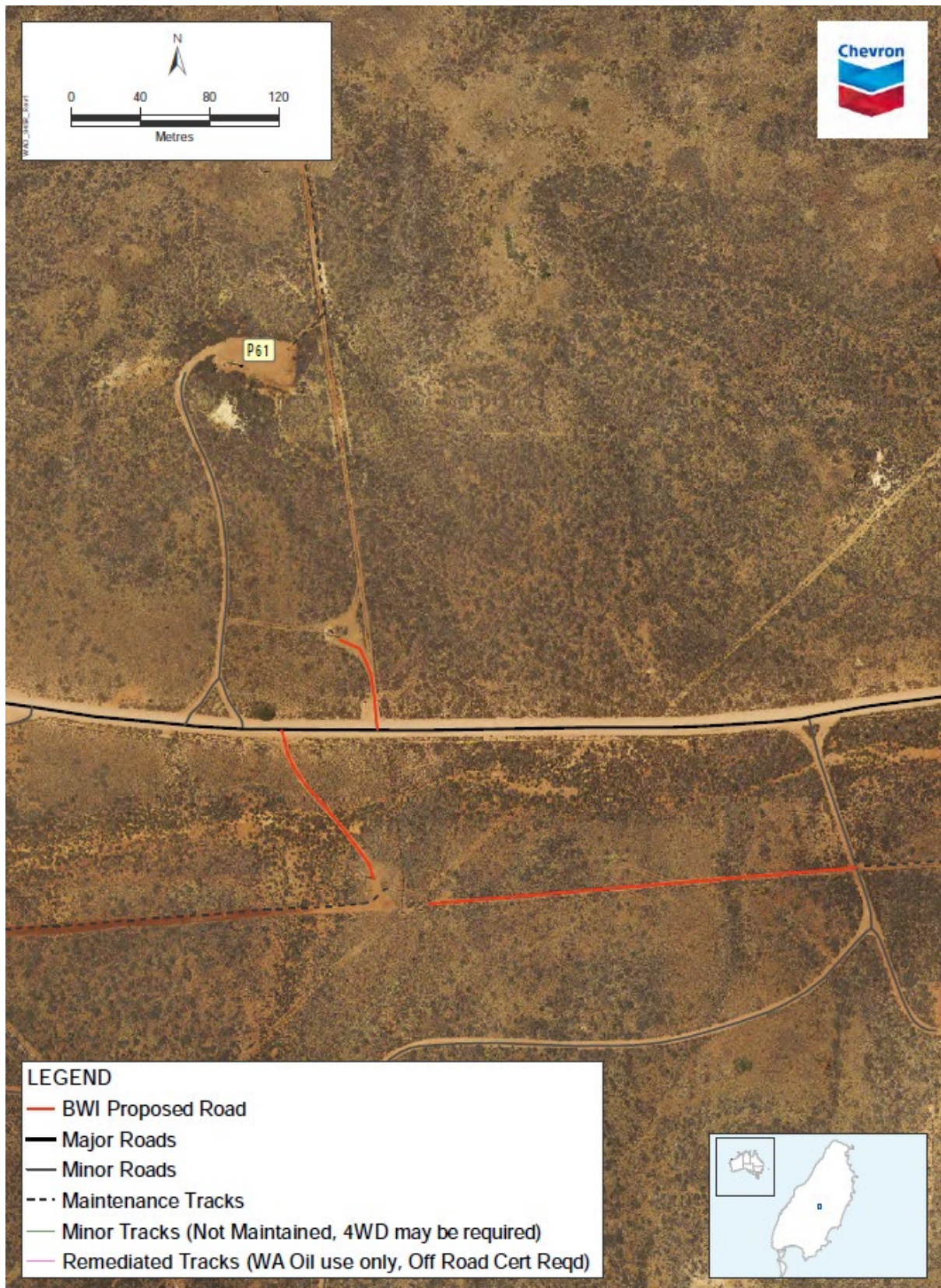
**Figure 15: Maintenance Access Track to be added to the BWI Road and Maintenance Track Network, Annexure 6 of CPS123/7**





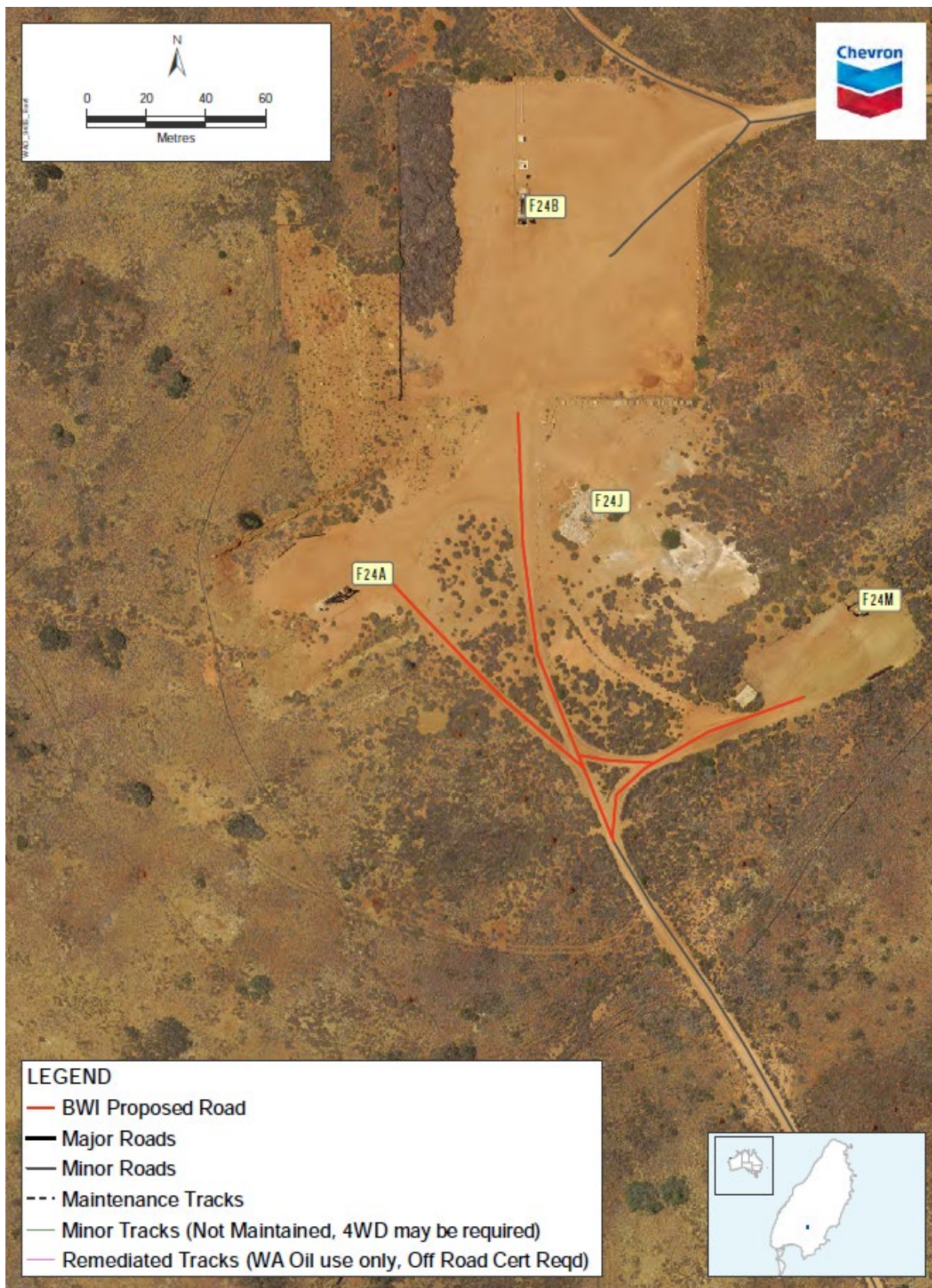
**Figure 16: Maintenance Access Tracks to be added to the BWI Road and Maintenance Track Network, Annexure 6 of CPS123/7**





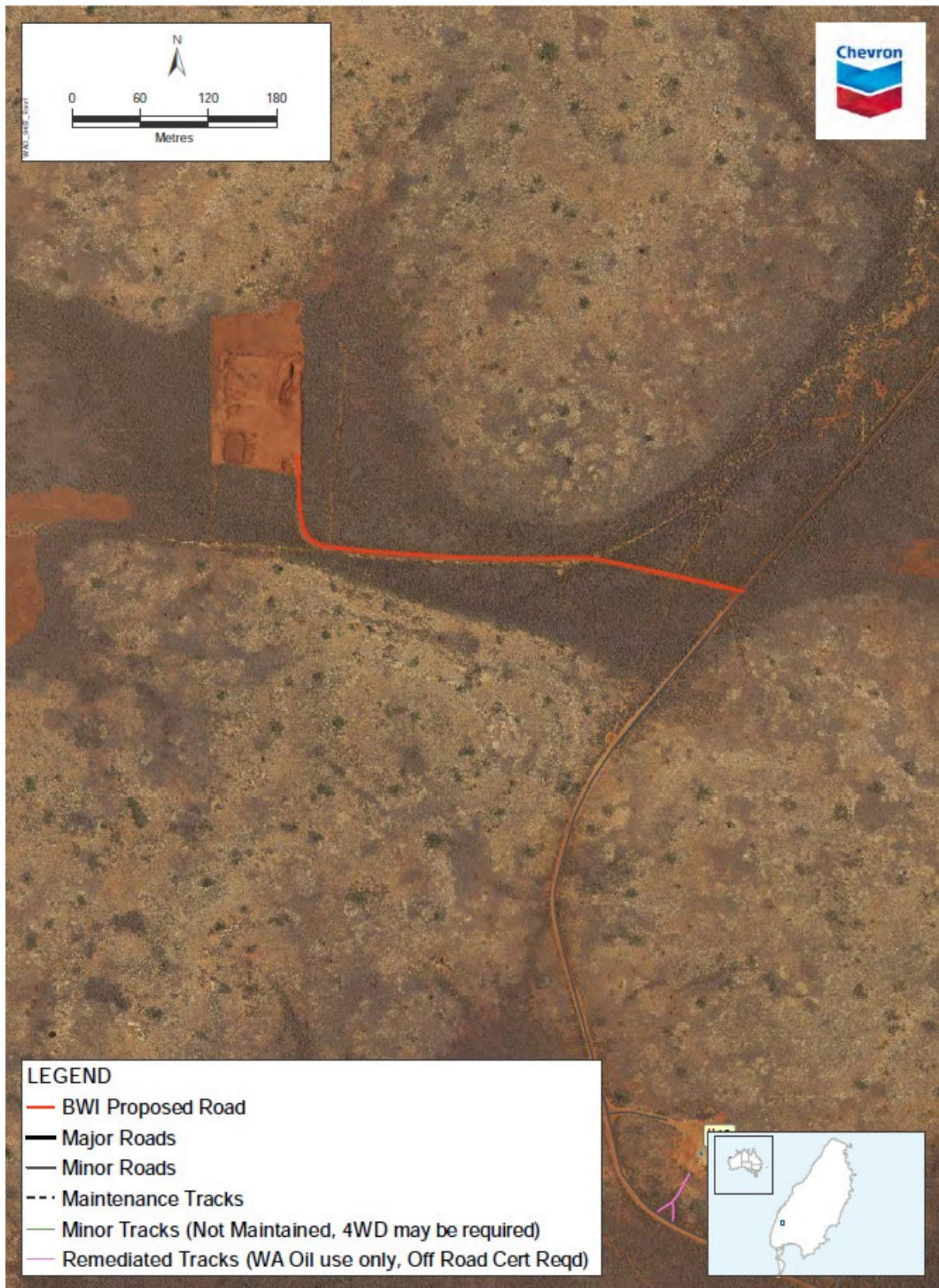
**Figure 17: Maintenance Access Tracks to be added to the BWI Road and Maintenance Track Network, Annexure 6 of CPS123/7**





**Figure 18: Existing Roads to be added to the BWI Road and Maintenance Track Network, Annexure 6 of CPS123/7**





**Figure 19: Maintenance Access Track to be added to the BWI Road and Maintenance Track Network, Annexure 6 of CPS123/7**





**Figure 20: Road to be added to the BWI Road and Maintenance Track Network, Annexure 6 of CPS123/7**





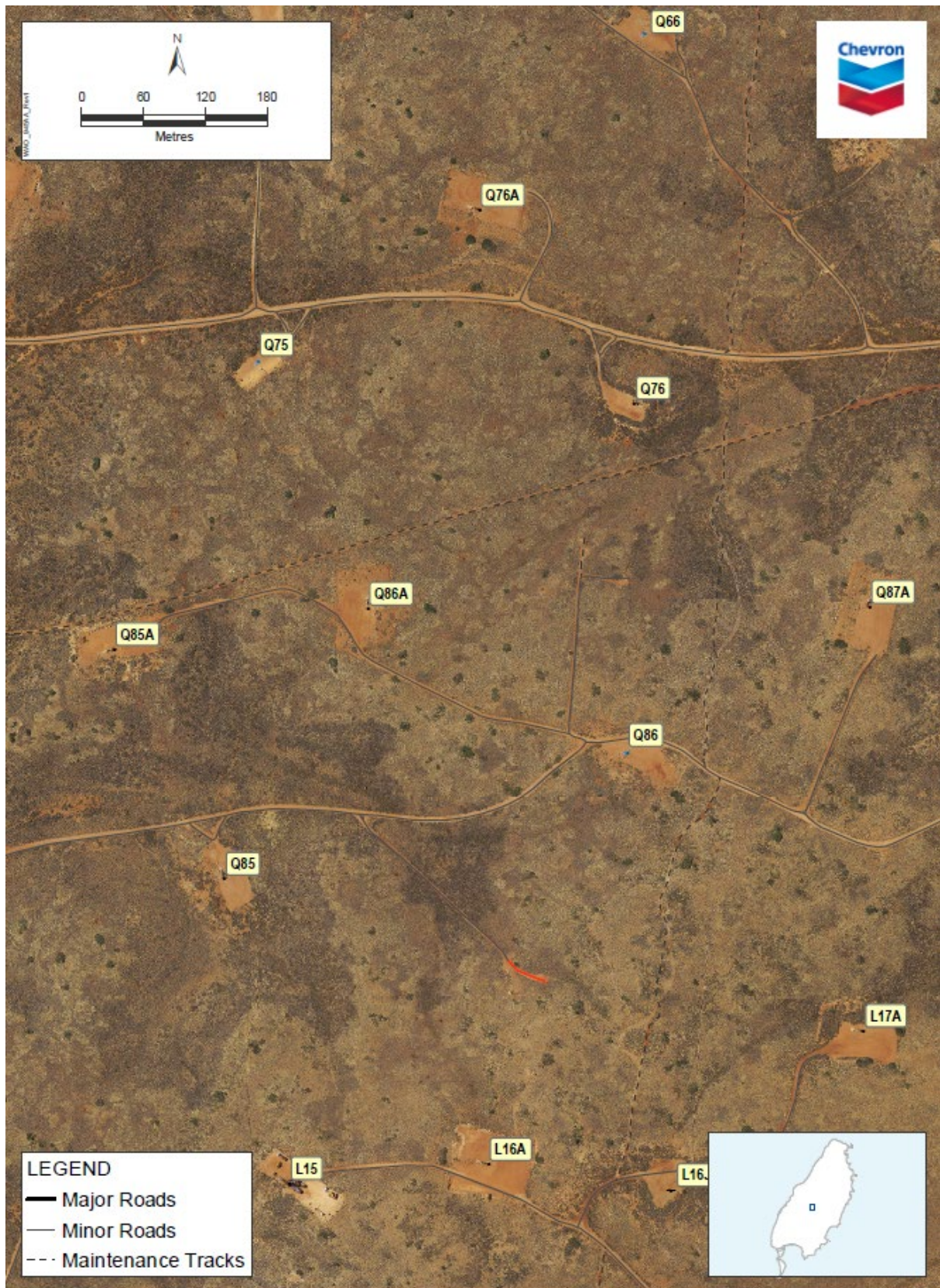
**Figure 21: Groundwater Monitoring Wells Access Track to be added to the BWI Road and Maintenance Track Network, Annexure 6 of CPS123/7**





**Figure 22: Anode Well Access Track to be added to the BWI Road and Maintenance Track Network, Annexure 6 of CPS123/7**





**Figure 23: Anode Well Access Track to be added to the BWI Road and Maintenance Track Network, Annexure 6 of CPS123/7**