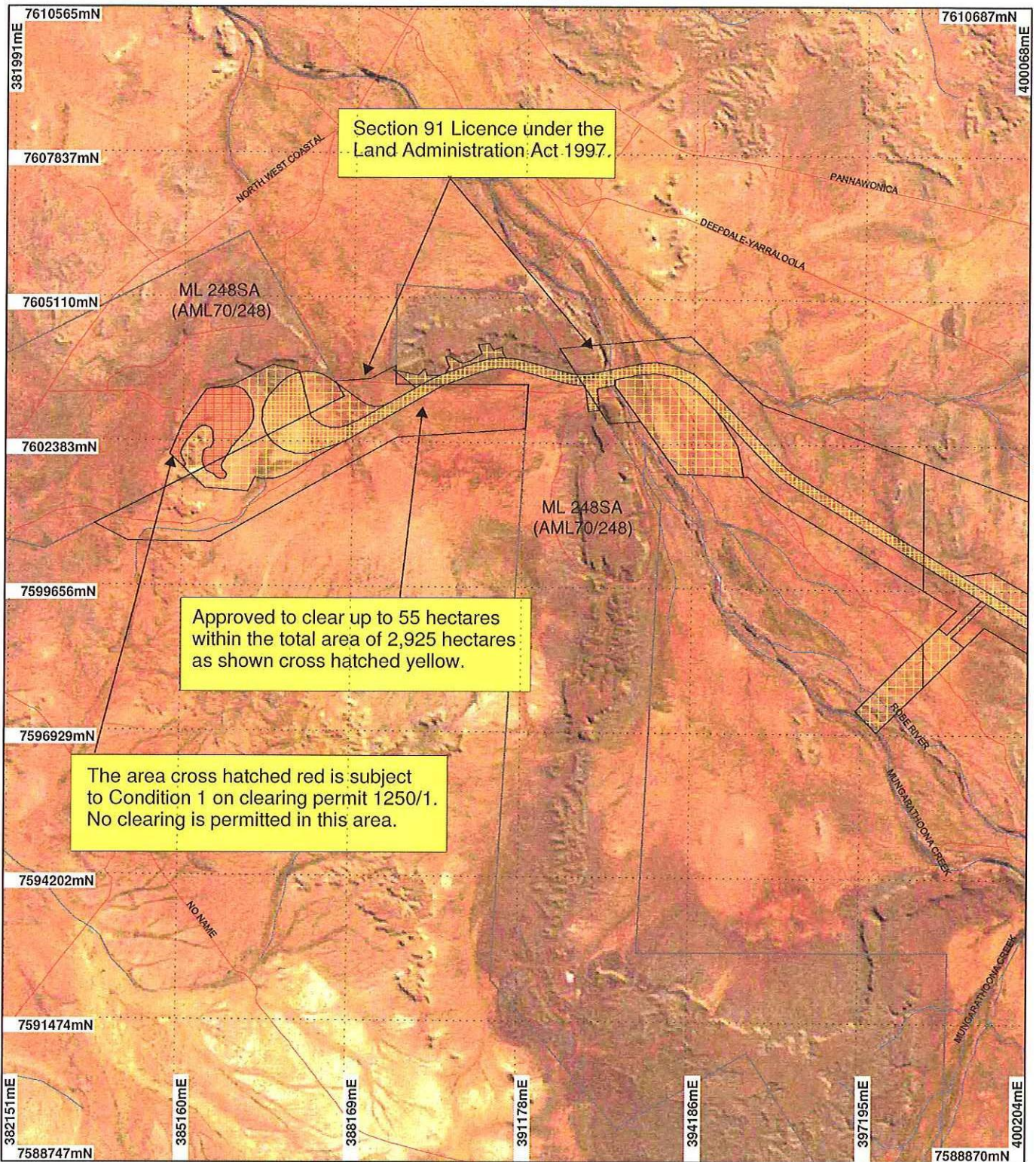
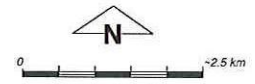


# PLAN 1250/1A



## LEGEND

- |  |                             |
|--|-----------------------------|
| Road Centrelines - DLI 1/5/04          | Areas Subject to Conditions |
| Rivers 250K - GA                       | Areas Approved to Clear     |
| Mining Tenements - DOIR                | Clearing Instruments_1      |
| Western Australia ETM 25m 543 - AGO 04 | Areas Subject to Conditions |
| Clearing Instruments (cont)            | Clearing Instruments_2      |
|  | Areas Applied to Clear      |



Scale 1:100000  
(Approximate when reproduced at A4)

Geocentric Datum Australia 1994

Note: the data in this map have not been projected. This may result in geometric distortion or measurement inaccuracies.

*Stuart Smith* Date 23/11/06

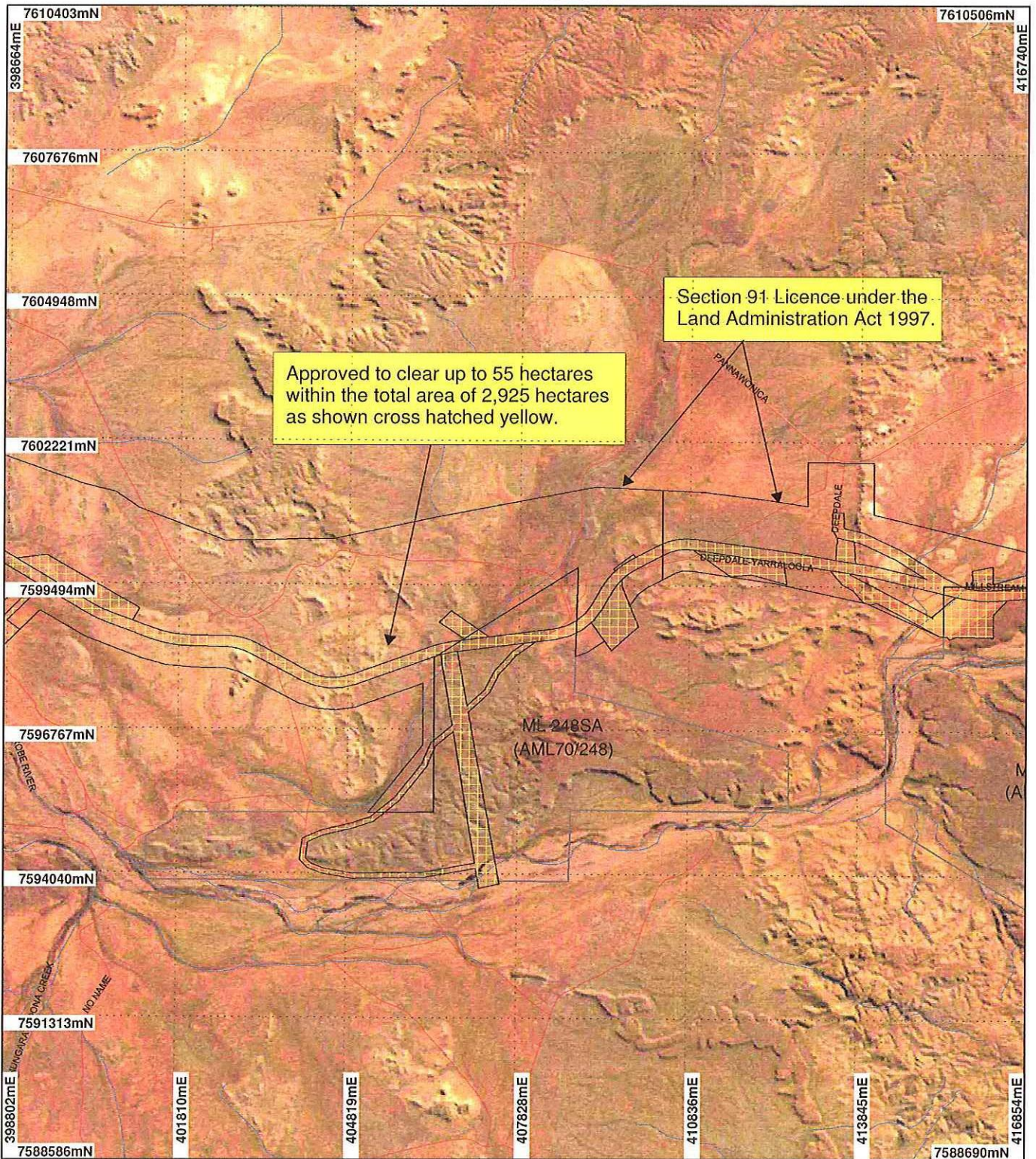
Stuart Smith  
Officer with delegated authority under Section 20 of the Environmental Protection Act 1986

Information derived from this map should be confirmed with the data custodian acknowledged by the agency acronym in the legend.



\* Project Data. This data has not been quality assured. Please contact map author for details.

# PLAN 1250/1B



## LEGEND

- Road Centrelines - DLI 1/5/04
- Rivers 250K - GA
- Mining Tenements - DOIR
- Western Australia ETM 25m 543 - AGO 04 Clearing Instruments (cont)
- Areas Subject to Conditions
- Areas Approved to Clear
- Clearing Instruments\_1
- Areas Subject to Conditions
- Clearing Instruments\_2
- Areas Applied to Clear



0 ————— ~2.5 km

Scale 1:100000

(Approximate when reproduced at A4)

Geocentric Datum Australia 1994

Note: the data in this map have not been projected. This may result in geometric distortion or measurement inaccuracies.

Date 23/11/00  
Stuart Smith

Officer with delegated authority under Section 20 of the Environmental Protection Act 1986

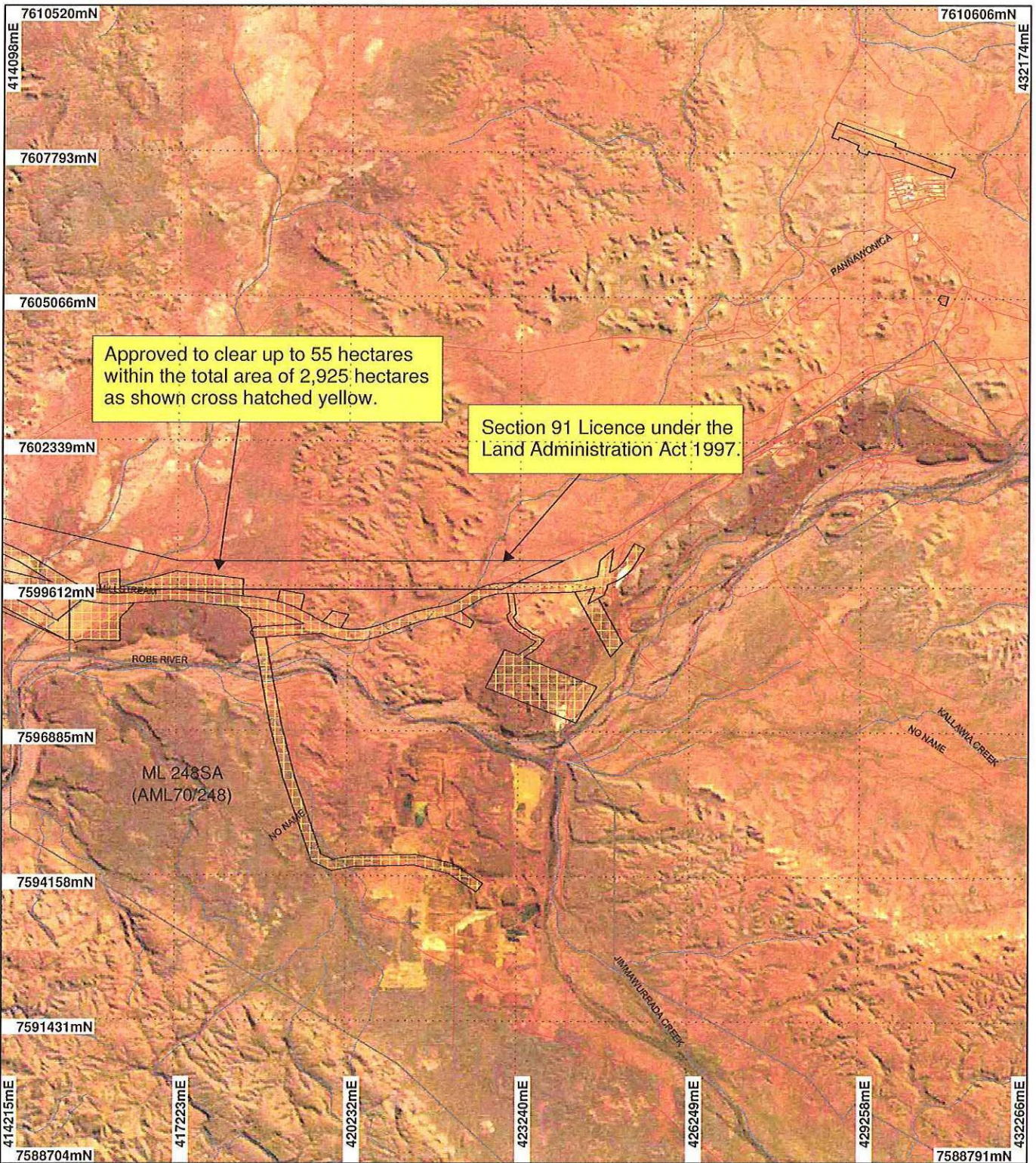
Information derived from this map should be confirmed with the data custodian acknowledged by the agency acronym in the legend.



Department of Environment

WA Crown Copyright 2002

# PLAN 1250/1C



**LEGEND**

Road Centrelines - DLI 1/5/04	Areas Subject to Conditions
Rivers 250K - GA	Areas Approved to Clear
Mining Tenements - DOIR	Clearing Instruments_1
Western Australia ETM 25m 543 - AGO 04	Areas Subject to Conditions
Clearing Instruments (cont)	Clearing Instruments_2
	Areas Applied to Clear

Scale 1:100000  
 (Approximate when reproduced at A4)  
 Geocentric Datum Australia 1994  
 Note: the data in this map have not been projected. This may result in geometric distortion or measurement inaccuracies.  
  
 Date 23/11/02  
 Stuart Smith  
 Officer with delegated authority under Section 20 of the Environmental Protection Act 1986  
 Information derived from this map should be confirmed with the data custodian acknowledged by the agency acronym in the legend.  
  
 Department of Environment  
 WA Crown Copyright 2002

\* Project Data. This data has not been quality assured. Please contact map author for details.