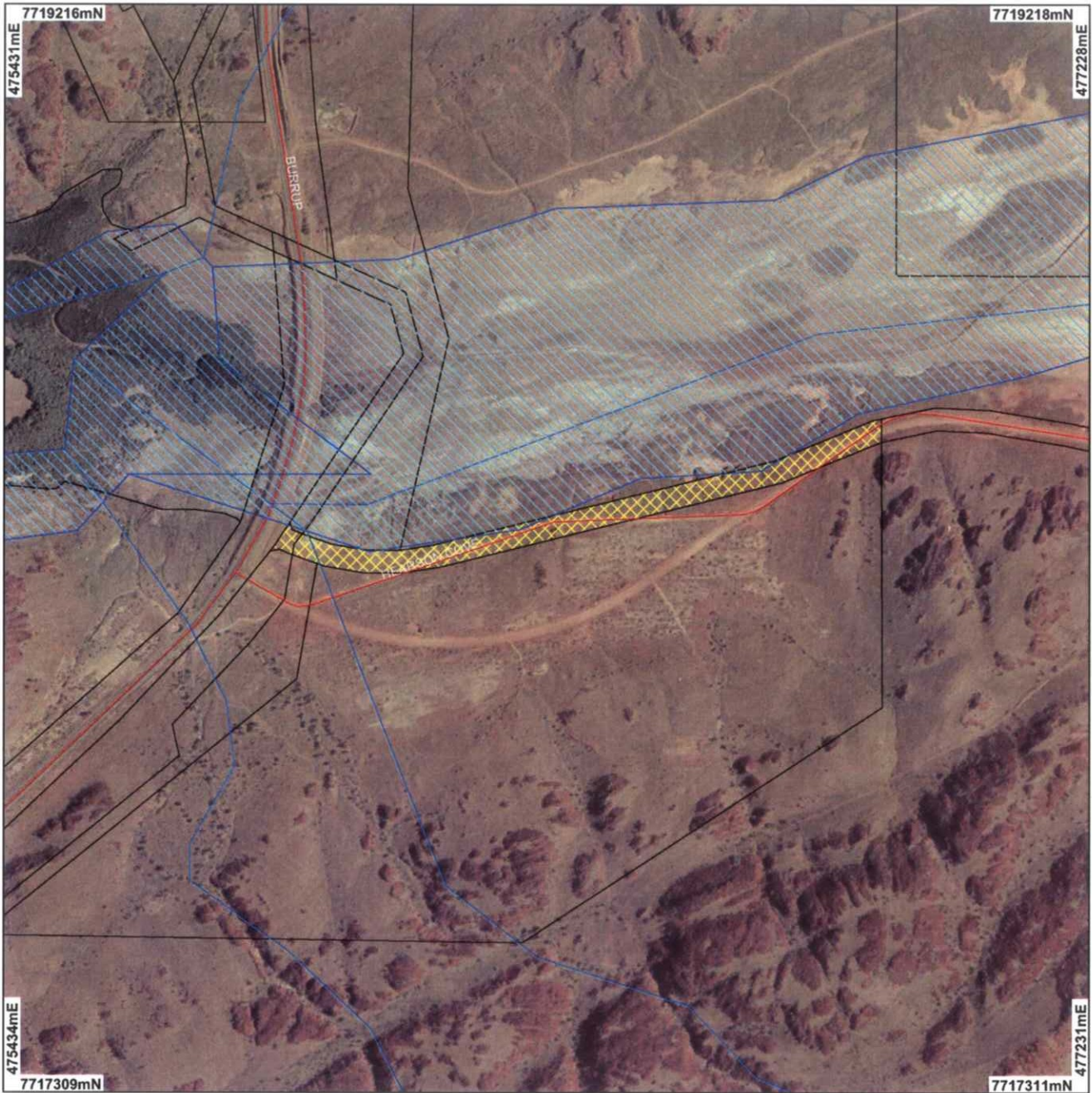
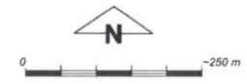


Plan 1453/1a



LEGEND

- | | | | |
|---|---|--|--|
| <ul style="list-style-type: none"> ■ Clearing Regulations - Environmentally Sensitive Areas - DOE 30/5/05 ■ Clearing Instruments ■ Areas Applied to Clear ■ Cadastre - DLI ■ Towns - DLI 8/04 ■ Dampier Archipelago 80cm Orthomosaic - DLI 01 | <ul style="list-style-type: none"> — Road Centrelines - DLI 1/5/04 — Hydrography, linear (hierarchy) - DOW — Coastal Waterline — Estuarine — Infrastructure — Inundation Area — Mainstream — Major River (cont) | <ul style="list-style-type: none"> — Major Trib — Minor River — Minor Trib — Paleo-Drainage Line — Significant Stream — Rivers 250K - GA — Threatened Fauna - CALM 30/9/05 ▲ Priority (cont) | <ul style="list-style-type: none"> ▲ Threatened ■ Geodata, Lakes - GA 28/06/02 |
|---|---|--|--|



Scale 1:10000
(Approximate when reproduced at Letter)

Geocentric Datum Australia 1994

Note: the data in this map have not been projected. This may result in geometric distortion or measurement inaccuracies.

[Signature] 31/8/2006
Date

Fred Kemp
Officer with delegated authority under Section 20 of the Environmental Protection Act 1986

Information derived from this map should be confirmed with the data custodian acknowledged by the agency acronym in the legend.



* Project Data. This data has not been quality assured. Please contact map author for details.