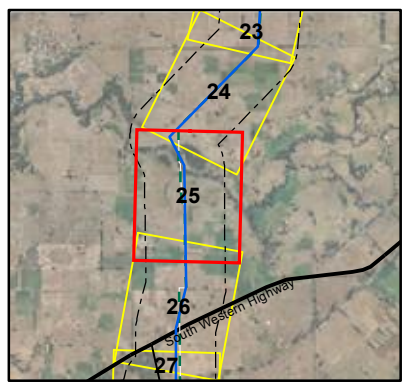


J:\Client_Data\Water_Corporation\73612006_SW_Yarragadee\Workspaces\Series\A3_5k_Environment_20060523.mxd



| Legend | | | |
|------------------------|------------------|----------------------------|--------------------------------------|
| Preferred Route | Rare Flora | Harvey Water Channels | Marine Construction - wharf/jetty |
| 500m Buffer | Priority 1 Flora | Area Subject to Inundation | Marsh Area |
| NSA - GHD | Priority 2 Flora | Coastal Waterline | Natural Pool - perennial |
| Boyanup Option | Priority 3 Flora | Dam Wall | Supply Channel |
| Donnybrook Alternative | Priority 4 Flora | Drain - major | Swamp - non-perennial |
| Boyanup Option - East | Birds | Drain - minor | Swamp - perennial |
| TEC (WaterCorp) | Fish | Earth Dam | Water Reservoir |
| TEC (Buffer Zone) | Insects | Estuarine | Watercourse - major, non-perennial |
| | Mammals | Lake - artificial | Watercourse - major, perennial |
| | Reptiles | Lake - non-perennial | Watercourse - minor, non-perennial |
| | | Lake - perennial | Watercourse - minor, perennial |
| | | Levee Bank | Watercourse Bank - perennial |
| | | | 330Kv OH |
| | | | 132Kv Transmission OH |
| | | | 66Kv Transmission |
| | | | High Voltage OH Cable - Single Phase |
| | | | High Voltage OH Cable - Three Phase |
| | | | High Voltage UG Cable |
| | | | Low Voltage OH |
| | | | Low Voltage UG |
| | | | Pipeline |
| | | | LGA Boundaries |
| | | | Environmentally Sensitive Areas |
| | | | PDWSA Protection Zones |
| | | | System 6 - Conservation Reserve |
| | | | Remnant Vegetation |
| | | | Conservation Park |
| | | | Nature Reserve |
| | | | Miscellaneous Reserve |
| | | | State Forest |
| | | | Timber Reserve |
| | | | Ex Dir Freehold |
| | | | Determined Mineralisation Areas |
| | | | Aboriginal Sites |
| | | | Cadastral Boundary |

