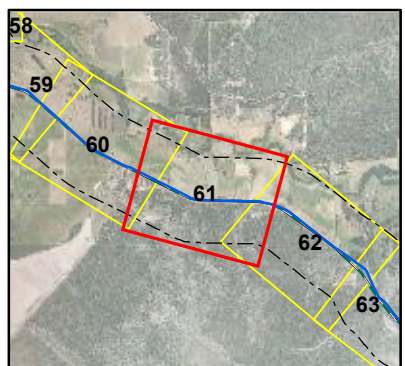




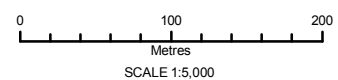
SHIRE OF CAPEL

375600



| Legend                 |                  |                            |                                    |                                      |                                 |
|------------------------|------------------|----------------------------|------------------------------------|--------------------------------------|---------------------------------|
| Preferred Route        | Rare Flora       | Harvey Water Channels      | Marine Construction - wharf/jetty  | 330Kv OH                             | System 6 - Conservation Reserve |
| 500m Buffer            | Priority 1 Flora | Area Subject to Inundation | Marsh Area                         | 132Kv Transmission OH                | Remnant Vegetation              |
| NSA - GHD              | Priority 2 Flora | Coastal Waterline          | Natural Pool - perennial           | 66Kv Transmission                    | Conservation Park               |
| Boyanup Option         | Priority 3 Flora | Dam Wall                   | Supply Channel                     | High Voltage OH Cable - Single Phase | Nature Reserve                  |
| Donnybrook Alternative | Priority 4 Flora | Earth Dam                  | Swamp - non-perennial              | High Voltage OH Cable - Three Phase  | Miscellaneous Reserve           |
| Boyanup Option - East  | Birds            | Drain - major              | Swamp - perennial                  | High Voltage UG Cable                | State Forest                    |
| TEC (WaterCorp)        | Fish             | Drain - minor              | Water Reservoir                    | Low Voltage OH                       | Timber Reserve                  |
| TEC (Buffer Zone)      | Insects          | Estuarine                  | Watercourse - major, non-perennial | Low Voltage UG                       | Ex Dir Freehold                 |
|                        | Mammals          | Lake - artificial          | Watercourse - major, perennial     | Pipeline                             | Determined Mineralisation Areas |
|                        | Reptiles         | Lake - non-perennial       | Watercourse - minor, non-perennial | LGA Boundaries                       | Aboriginal Sites                |
|                        |                  | Lake - perennial           | Watercourse - minor, perennial     | Environmentally Sensitive Areas      | Cadastral Boundary              |
|                        |                  | Levee Bank                 | Watercourse Bank - perennial       | PDWSA Protection Zones               |                                 |

Map No. 61



MAUNSELL | AECOM