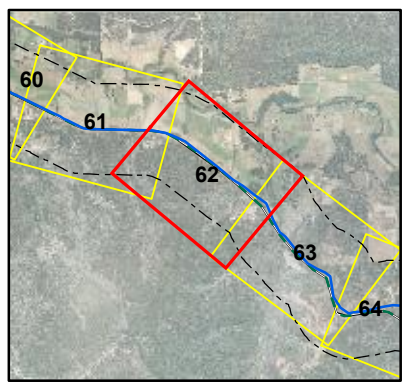
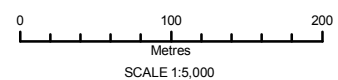


J:\Client\_Data\Water\_Corporation\73612006\_SW\_Yarragadee\Workspaces\Series\A3\_5k\_Environment\_20060523.mxd



Legend					
	Preferred Route		Rare Flora		Harvey Water Channels
	500m Buffer		Priority 1 Flora		Area Subject to Inundation
	NSA - GHD		Priority 2 Flora		Coastal Waterline
	Boyanup Option		Priority 3 Flora		Dam Wall
	Donnybrook Alternative		Priority 4 Flora		Drain - major
	Boyanup Option - East		Birds		Drain - minor
	TEC (WaterCorp)		Fish		Earth Dam
	TEC (Buffer Zone)		Insects		Estuarine
			Mammals		Lake - artificial
			Reptiles		Lake - non-perennial
					Lake - perennial
					Levee Bank
	Marine Construction - wharf/jetty		Marsh Area		330Kv OH
	Natural Pool - perennial		Swamp - non-perennial		132Kv Transmission OH
	Supply Channel		Swamp - perennial		66Kv Transmission
	Water Reservoir		Watercourse - major, non-perennial		High Voltage OH Cable - Single Phase
	Watercourse - major, perennial		Watercourse - minor, non-perennial		High Voltage OH Cable - Three Phase
	Watercourse - minor, perennial		Watercourse Bank - perennial		High Voltage UG Cable
	Watercourse - minor, perennial				Low Voltage UG Cable
	Watercourse - minor, perennial				Low Voltage OH
	Watercourse - minor, perennial				Low Voltage UG
	Watercourse - minor, perennial				Pipeline
	Watercourse - minor, perennial				Environmentally Sensitive Areas
	Watercourse - minor, perennial				PDWSA Protection Zones
	Watercourse - minor, perennial				System 6 - Conservation Reserve
	Watercourse - minor, perennial				Remnant Vegetation
	Watercourse - minor, perennial				Conservation Park
	Watercourse - minor, perennial				Nature Reserve
	Watercourse - minor, perennial				Miscellaneous Reserve
	Watercourse - minor, perennial				State Forest
	Watercourse - minor, perennial				Timber Reserve
	Watercourse - minor, perennial				Ex Dir Freehold
	Watercourse - minor, perennial				Determined Mineralisation Areas
	Watercourse - minor, perennial				Aboriginal Sites
	Watercourse - minor, perennial				Cadastral Boundary

Map No. 62



MAUNSELL | AECOM