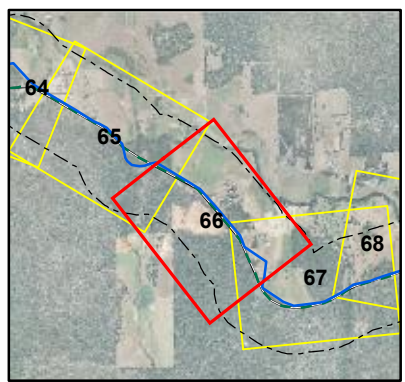
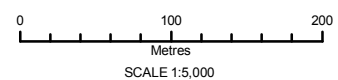


J:\Client_Data\Water_Corporation\73612006_SW_Yarragadee\Workspaces\Series\A3_5k_Environment_20060523.mxd



Legend			
	Preferred Route		Rare Flora
	500m Buffer		Priority 1 Flora
	NSA - GHD		Priority 2 Flora
	Boyanup Option		Priority 3 Flora
	Donnybrook Alternative		Priority 4 Flora
	Boyanup Option - East		Birds
	TEC (WaterCorp)		Fish
	TEC (Buffer Zone)		Insects
	Harvey Water Channels		Mammals
	Area Subject to Inundation		Reptiles
	Coastal Waterline		Lake - artificial
	Dam Wall		Lake - non-perennial
	Supply Channel		Lake - perennial
	Swamp - non-perennial		Levee Bank
	Swamp - perennial		Watercourse - major, non-perennial
	Water Reservoir		Watercourse - major, perennial
	Watercourse - major, non-perennial		Watercourse - minor, non-perennial
	Watercourse - major, perennial		Watercourse - minor, perennial
	Watercourse - minor, non-perennial		Watercourse Bank - perennial
	Watercourse - minor, perennial		Marine Construction - wharf/jetty
	Watercourse Bank - perennial		Marsh Area
			Natural Pool - perennial
			Supply Channel
			Swamp - non-perennial
			Swamp - perennial
			Water Reservoir
			Watercourse - major, non-perennial
			Watercourse - major, perennial
			Watercourse - minor, non-perennial
			Watercourse - minor, perennial
			Watercourse Bank - perennial
	330Kv OH		132Kv Transmission OH
	66Kv Transmission		High Voltage OH Cable - Single Phase
	High Voltage OH Cable - Single Phase		High Voltage OH Cable - Three Phase
	High Voltage OH Cable - Single Phase		High Voltage UG Cable
	High Voltage UG Cable		Low Voltage UG
	Low Voltage UG		Pipeline
	Pipeline		LGA Boundaries
	LGA Boundaries		Environmentally Sensitive Areas
	Environmentally Sensitive Areas		PDWSA Protection Zones
	System 6 - Conservation Reserve		Remnant Vegetation
	Remnant Vegetation		Conservation Park
	Conservation Park		Nature Reserve
	Nature Reserve		Miscellaneous Reserve
	Miscellaneous Reserve		State Forest
	State Forest		Timber Reserve
	Timber Reserve		Ex Dir Freehold
	Ex Dir Freehold		Determined Mineralisation Areas
	Determined Mineralisation Areas		Aboriginal Sites
	Aboriginal Sites		Cadastral Boundary

Map No. 66



MAUNSELL | AECOM