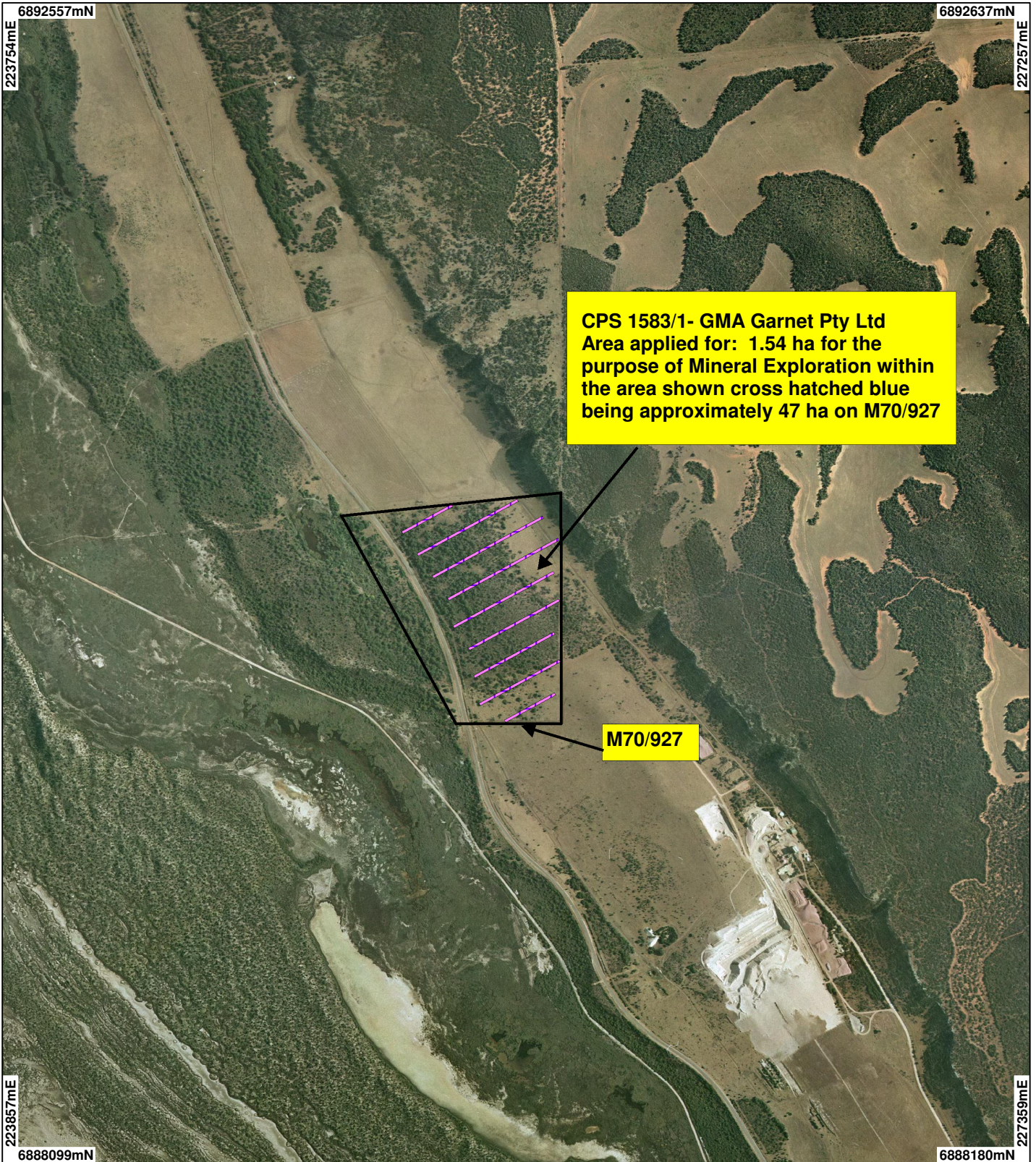





CPS 1583/1 - GMA Garnet Pty Ltd



CPS 1583/1- GMA Garnet Pty Ltd
Area applied for: 1.54 ha for the purpose of Mineral Exploration within the area shown cross hatched blue being approximately 47 ha on M70/927

M70/927

LEGEND

-  Clearing instruments
-  Mining Tenements - DOIR_1
-  Kalbarri 80cm Orthomosaic - DLI 04/02



Scale 1:20000
 (Approximate when reproduced at A4)

Geocentric Datum Australia 1994

Note: the data in this map have not been projected. This may result in geometric distortion or measurement inaccuracies.

..... Date

Officer with delegated authority under Section 20 of the Environmental Protection Act 1986

Information derived from this map should be confirmed with the data custodian acknowledged by the agency acronym in the legend.



WA Crown Copyright 2002

* Project Data. This data has not been quality assured. Please contact map author for details.