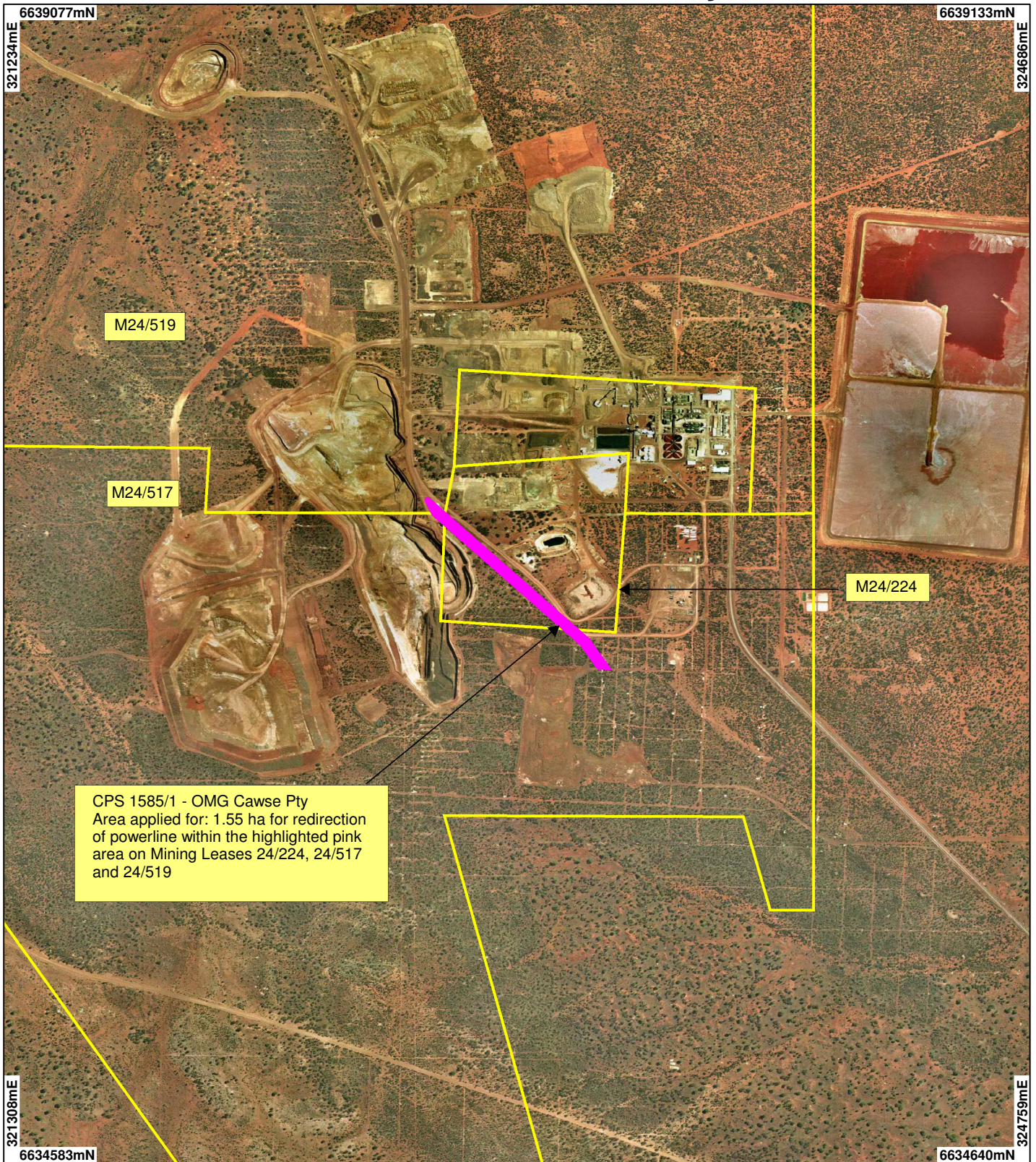


CPS 1585/1 - OMG Cawse Pty Ltd



CPS 1585/1 - OMG Cawse Pty
 Area applied for: 1.55 ha for redirection
 of powerline within the highlighted pink
 area on Mining Leases 24/224, 24/517
 and 24/519

LEGEND

Clearing instruments

- Areas Applied to Clear
- Areas Subject to Conditions
- Areas Approved to Clear

Bardoc 1.4m Orthomosaic -
 DL102

Mining Tenements - DOIR_1



Scale 1:20000
 (Approximate when reproduced at A4)

Geocentric Datum Australia 1994

Note: the data in this map have not been
 projected. This may result in geometric
 distortion or measurement inaccuracies.

..... Date

Officer with delegated authority under Section 20 of
 the Environmental Protection Act 1986

Information derived from this map should be
 confirmed with the data custodian acknowledged
 by the agency acronym in the legend.



WA Crown Copyright 2002

* Project Data. This data has not been quality assured. Please contact map author for details.