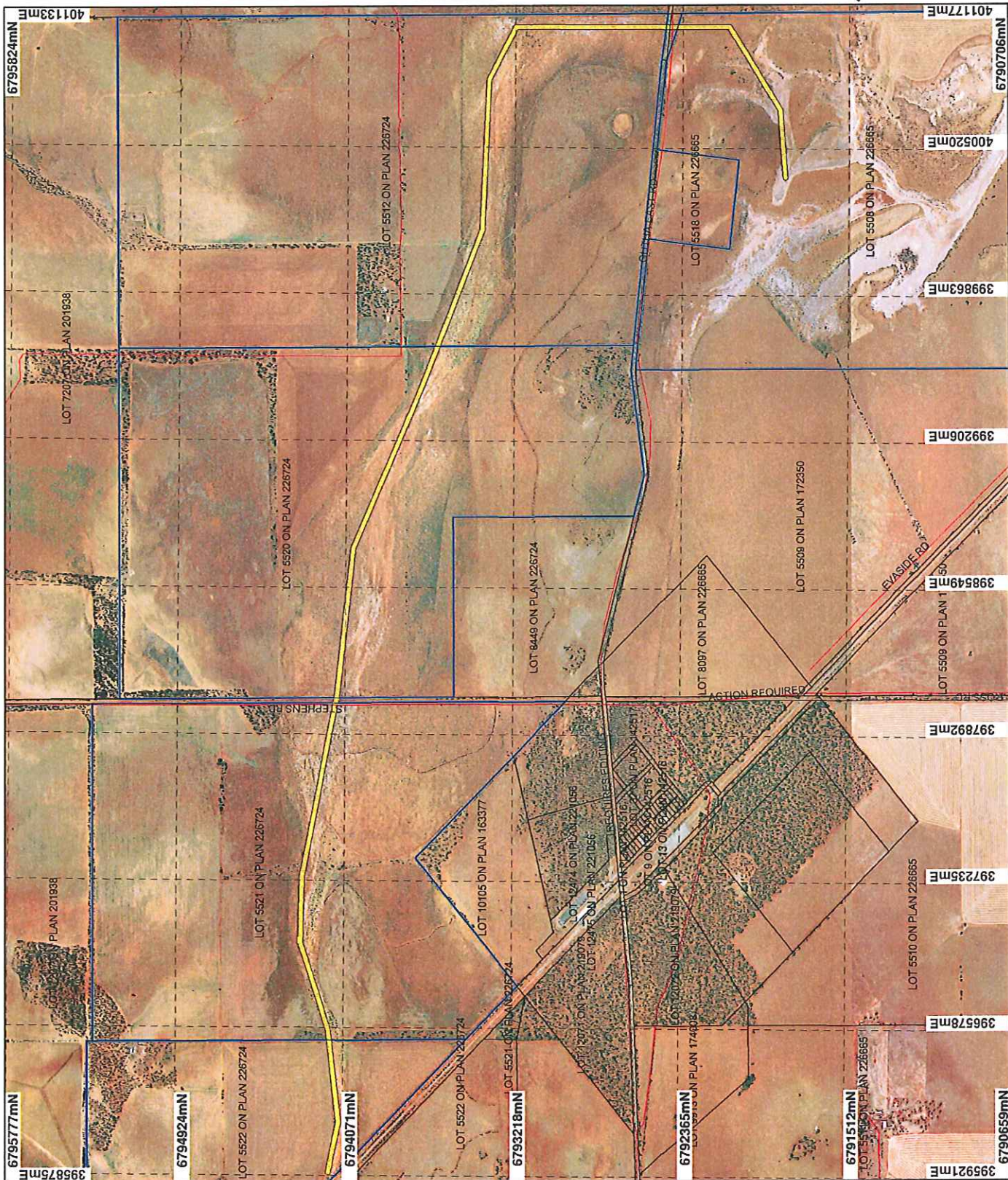


Plan 1651/1a



LEGEND

- Land parcels related to instrument
- Clearing Instruments
- Areas Approved to Clear
- Road Centrelines - DL1 1/5/04
- Cadastral - DLJ
- Mullewa 50cm Orthomosaic - Landgate05
- Yandamooka 50cm Orthomosaic - DL105

* Project Data is denoted by asterisk.
 This data has not been quality assured.
 Please contact map author for details.



Scale 1:25000
 (Approximate when reproduced at A4)

Geocentric Datum Australia 1994

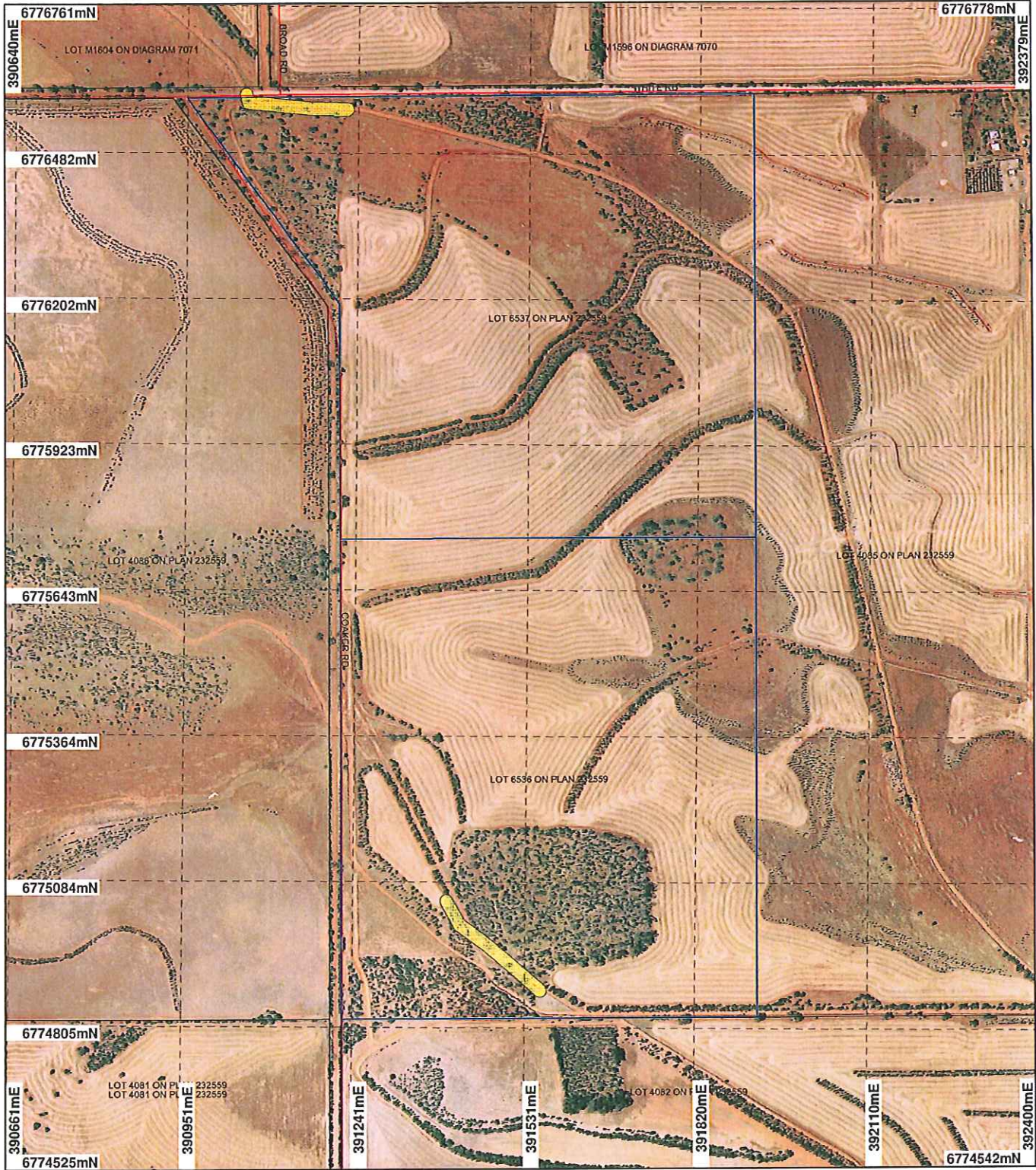
Note: the data in this map have not been
 projected. This may result in geometric
 distortion or measurement inaccuracies.

[Signature] Date 30/3/07

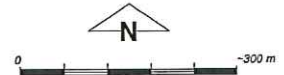
officer with delegated authority under Section 20 of
 the Environmental Protection Act 1985
 Information derived from this map should be
 confirmed with the data custodian acknowledged
 by the agency acronym in the legend.



Plan 1651/1b



- Land parcels related to instrument
- Road Centrelines - DLI 1/5/04
- Cadastre - DL1
- Clearing Instruments
- Areas Approved to Clear
- Yandanooka 50cm Orthomosaic - DLI05
- Mullewa 50cm Orthomosaic - Landgate05



Scale 1:10000
(Approximate when reproduced at A4)
Geocentric Datum Australia 1994

Note: the data in this map have not been plotted. This may result in geometric distortion or measurement inaccuracies.

[Signature]
Date 30/3/07

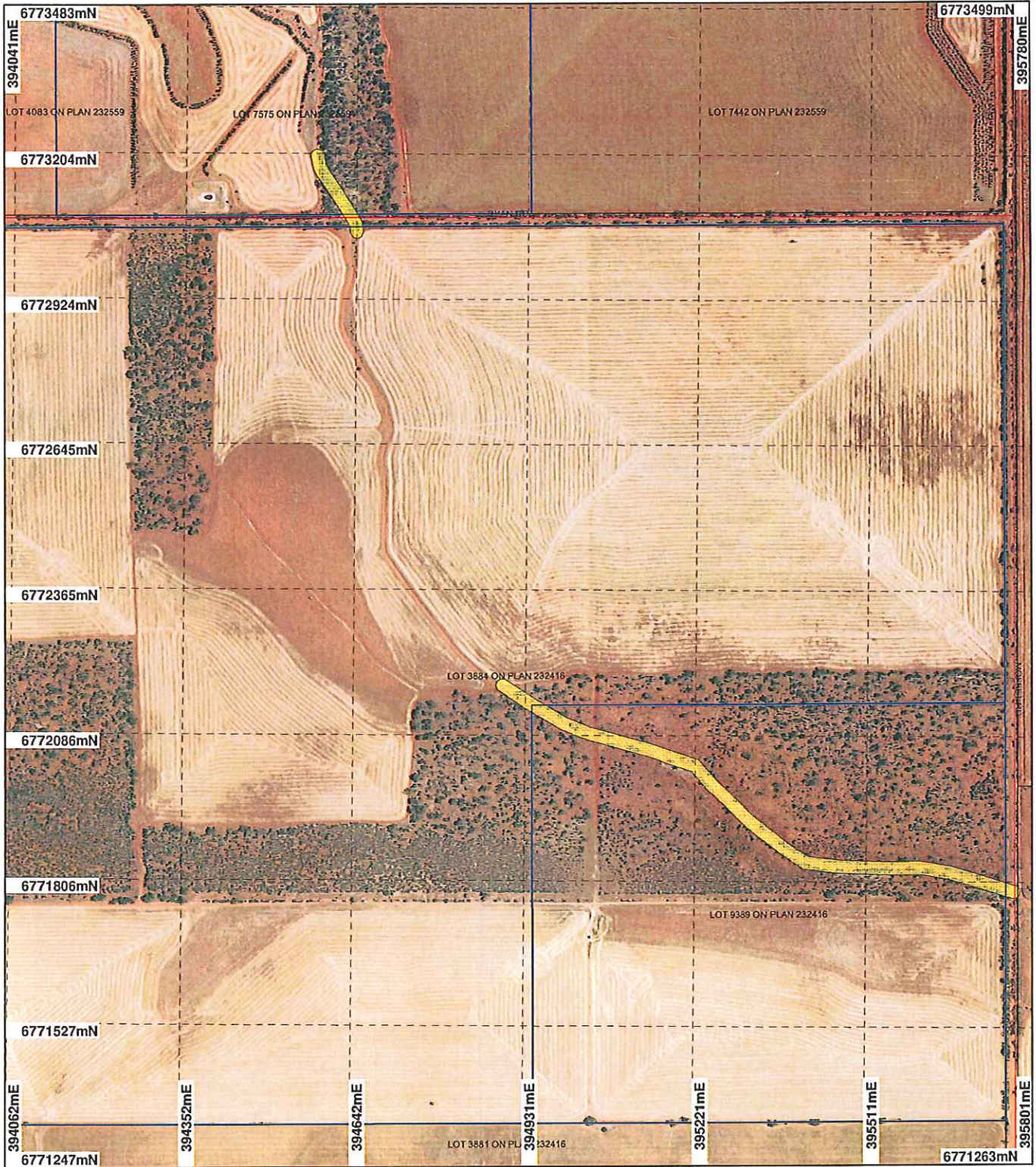
Officer with delegated authority under Section 20 of the Environmental Protection Act 1986

Information derived from this map should be confirmed with the data custodian acknowledged by the agency acronym in the legend.




* Project Data is denoted by asterisk. This data has not been quality assured. Please contact map author for details.

Plan 1651/1c



LEGEND


Land parcels related to instrument	Road Centrelines - DLI 1/5/04	Yandanooka 50cm Orthomosaic - DL105
Clearing Instruments	Cadastre - DLI	Mullewa 50cm Orthomosaic - Landgate05
Areas Approved to Clear		



Scale 1:10000
(Approximate when reproduced at A4)


Geocentric Datum Australia 1994

Note: the data in this map have not been protected. This may result in geometric distortion or measurement inaccuracies.

 Date: 30/3/07

Officer with delegated authority under Section 20 of the Environmental Protection Act 1986

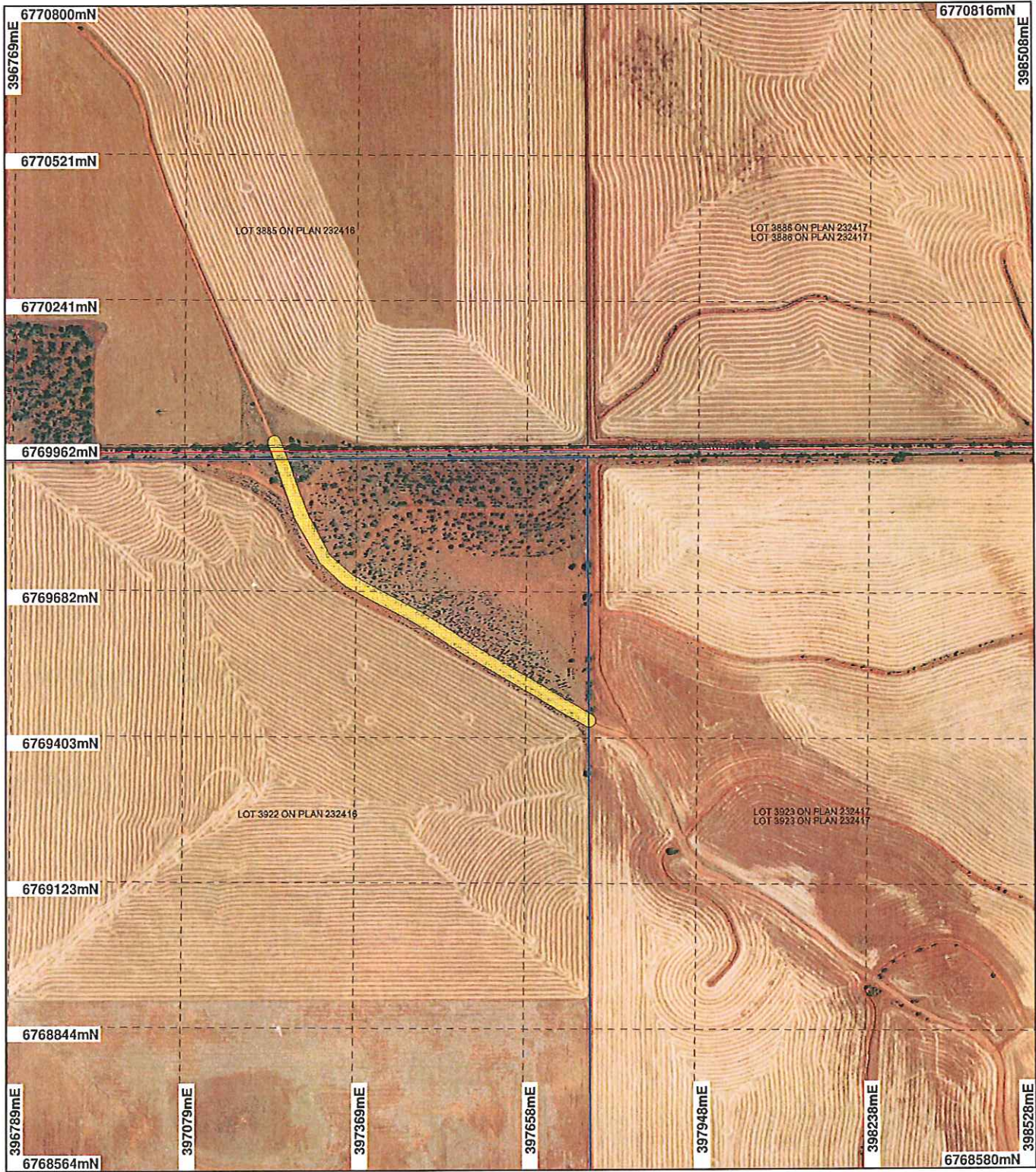
Information derived from this map should be confirmed with the data custodian acknowledged by the agency acronym in the legend.



WA Crown Copyright © 2002

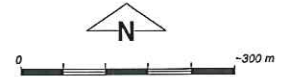
* Project Data is denoted by asterisk. This data has not been quality assured. Please contact map author for details.

Plan 1651/1d



LEGEND

- Land parcels related to Instrument
- Road Centrelines - DLI 1/5/04
- Yandanooka 50cm Orthomosaic - DL105
- Cadastre - DLI
- Clearing Instruments
- Areas Approved to Clear
- Mullewa 50cm Orthomosaic - Landgate05



Scale 1:10000

(Approximate when reproduced at A4)

Geocentric Datum Australia 1994

Note: the data in this map have not been checked. This may result in geometric distortion or measurement inaccuracies.

[Signature] Date 30/3/07

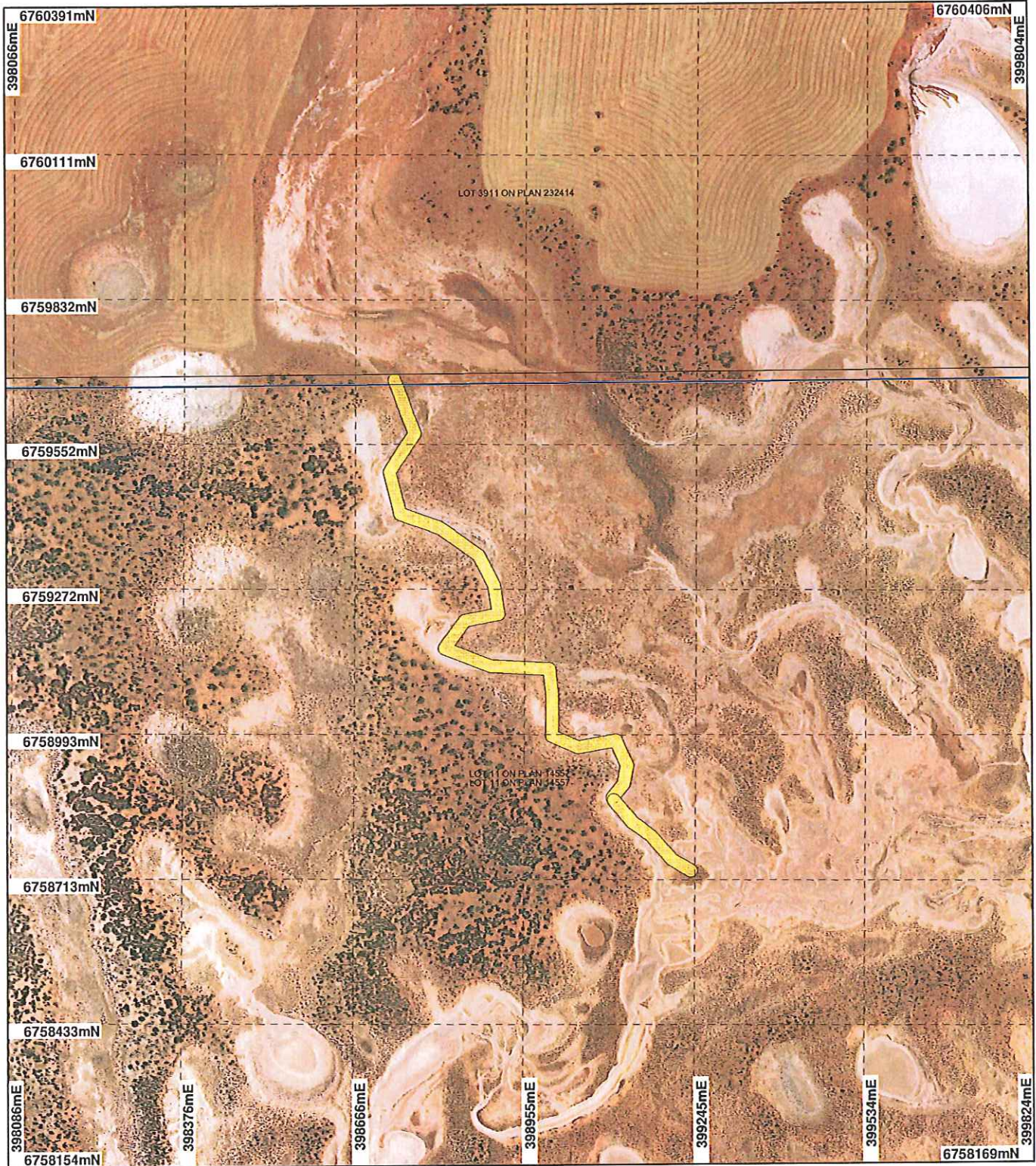
Officer with delegated authority under Section 20 of the Environmental Protection Act 1986

Information derived from this map should be confirmed with the data custodian acknowledged by the agency acronym in the legend.



* Project Data is denoted by asterisk. This data has not been quality assured. Please contact map author for details.

Plan 1651/1e



LEGEND

- Land parcels related to Instrument
- Cadastre - DLI
- Clearing Instruments
- Areas Approved to Clear

- Road Centrelines - DLI 1/5/04
- Cadastre - DLI
- Mullewa 50cm Orthomosaic - Landgate05

Yandanooka 50cm Orthomosaic - DLI05



0 ————— 250 m

Scale 1:10000

(Approximate when reproduced at A4)

Geocentric Datum Australia 1994

Note: The data in this map have not been verified. This may result in geometric distortion or measurement inaccuracies.

[Signature] Date 30/3/08

Officer with delegated authority under Section 20 of the Environmental Protection Act 1986

Information derived from this map should be confirmed with the data custodian acknowledged by the agency acronym in the legend.



WA Crown Copyright 2002

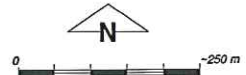
* Project Data is denoted by asterisk. This data has not been quality assured. Please contact map author for details.

Plan 1651/1f



LEGEND

- Land parcels related to instrument
- Cadastre - DLI Perenjori 50cm Orthomosaic - DL105
- Clearing Instruments**
- Areas Approved to Clear
- Road Centrelines - DLI 1/5/04



Scale 1:10000
(Approximate when reproduced at A4)

Geocentric Datum Australia 1994

Note: the data in this map have not been projected. This may result in geometric distortion or measurement inaccuracies.

[Signature]
Date 30/3/07

Officer with delegated authority under Section 20 of the Environmental Protection Act 1986

Information derived from this map should be confirmed with the data custodian acknowledged by the agency acronym in the legend.



* Project Data is denoted by asterisk. This data has not been quality assured. Please contact map author for details.