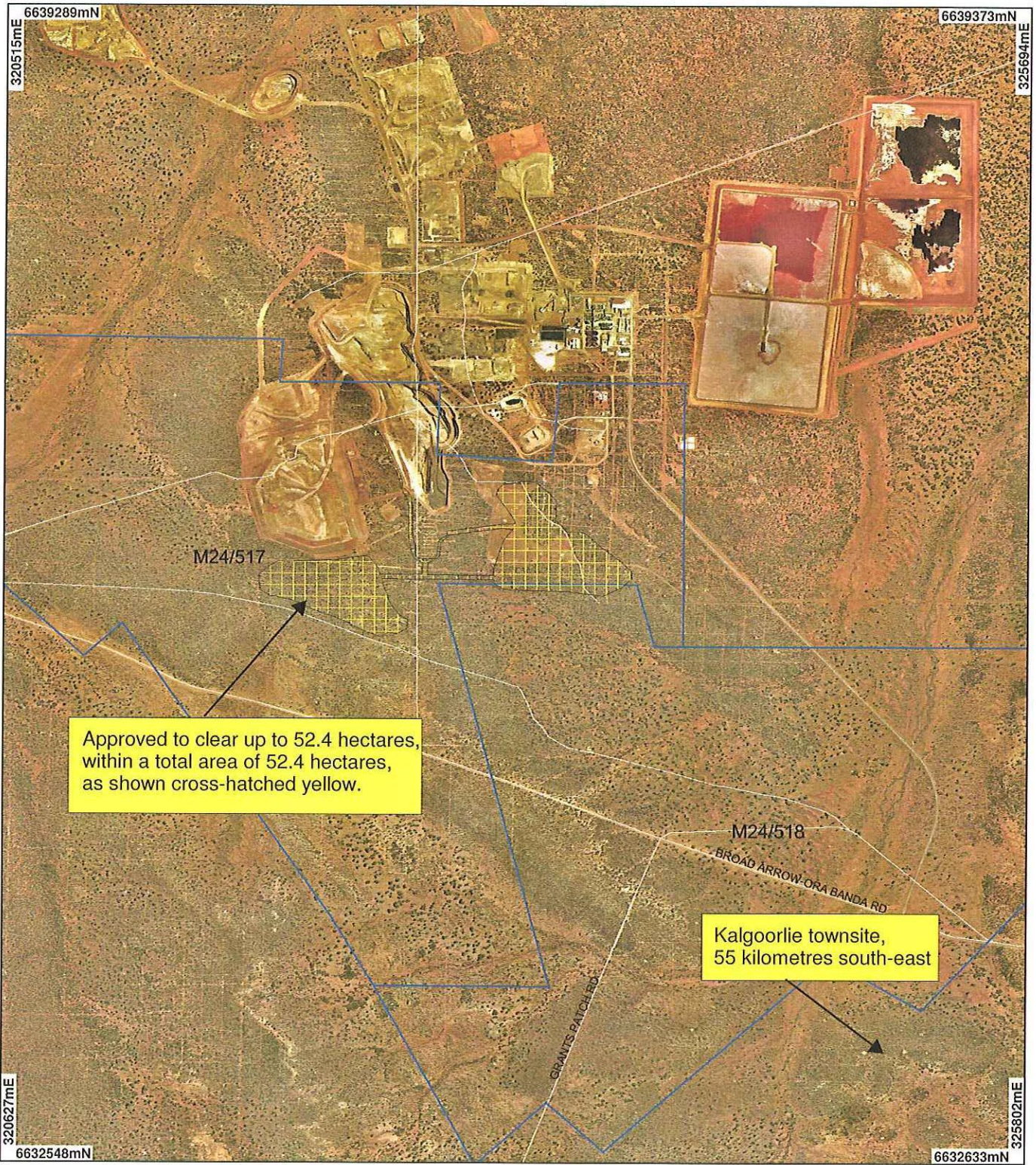


# PLAN 1737/1



Approved to clear up to 52.4 hectares, within a total area of 52.4 hectares, as shown cross-hatched yellow.

Kalgoorlie townsite, 55 kilometres south-east

## LEGEND

- Road Centrelines - DL1 1/5/04
- Mining Tenements - DOIR
- Bardoc 1.4m Orthomosaic - DL102
- Clearing Instruments
- Areas Approved to Clear



0 ————— 750 m

Scale 1:30000  
(Approximate when reproduced at A4)

Geocentric Datum Australia 1994

Note: the data in this map have not been projected. This may result in geometric distortion or measurement inaccuracies.

*[Signature]* Date 3/5/07  
 GRAHAM COBBY  
 Officer with delegated authority under Section 20 of the Environmental Protection Act 1986

Information derived from this map should be confirmed with the data custodian acknowledged by the agency acronym in the legend.



WA Crown Copyright 2002