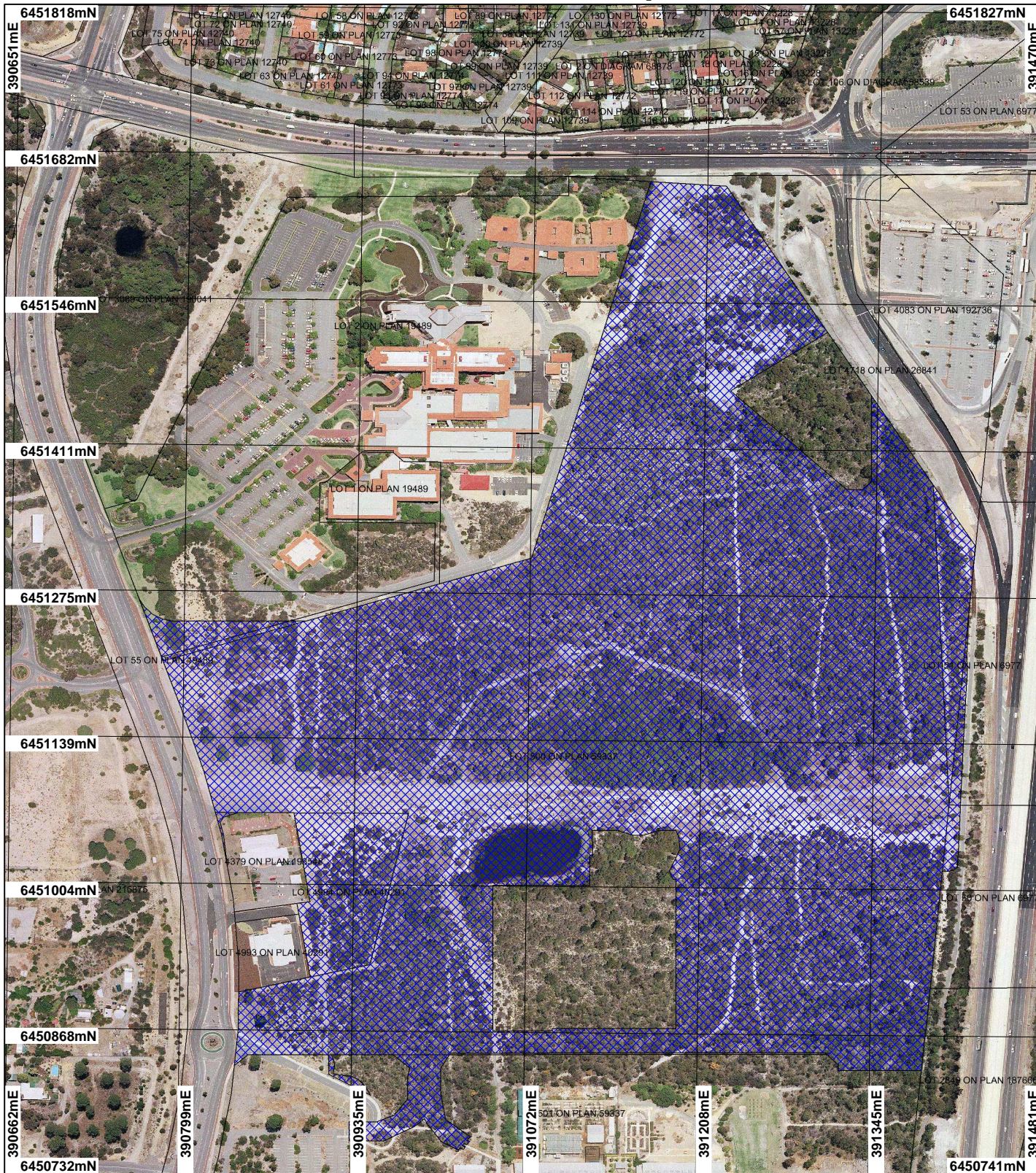


# CPS 1773/4 - Map



## LEGEND

## Cadastral Clearing Instruments

-  Areas Applied to Clear  
 Areas Approved to Clear  
 Local Government Authorities



Scale 1:4801

(Approximate when reproduced at A4)

*Note: the data in this map have not been projected. This may result in geometric distortion or measurement inaccuracies.*

Date .....

Officer with delegated authority under Section 20 of  
the Environmental Protection Act 1986

Information derived from this map should be confirmed with the data custodian acknowledged by the agency acronym in the legend.

Department of  
**Environment and Conservation**

Our environment, our future  
WA Crown Copyright 2002

\* *Project Data.* This data has not been quality assured. Please contact map author for details.