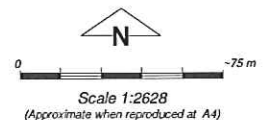


Plan 181/3 a



LEGEND

- Clearing Instruments
- Bunbury 50cm Orthomosaic - Landgate 2006
- Areas Subject to Conditions
- Road Centrelines
- Cadastre



Geocentric Datum Australia 1994

Note: the data in this map have not been projected. This may result in geometric distortion or measurement inaccuracies.

Kaia Claymore 12/2/02
 Date _____
 K Claymore

Officer with delegated authority under Section 20 of the Environmental Protection Act 1986

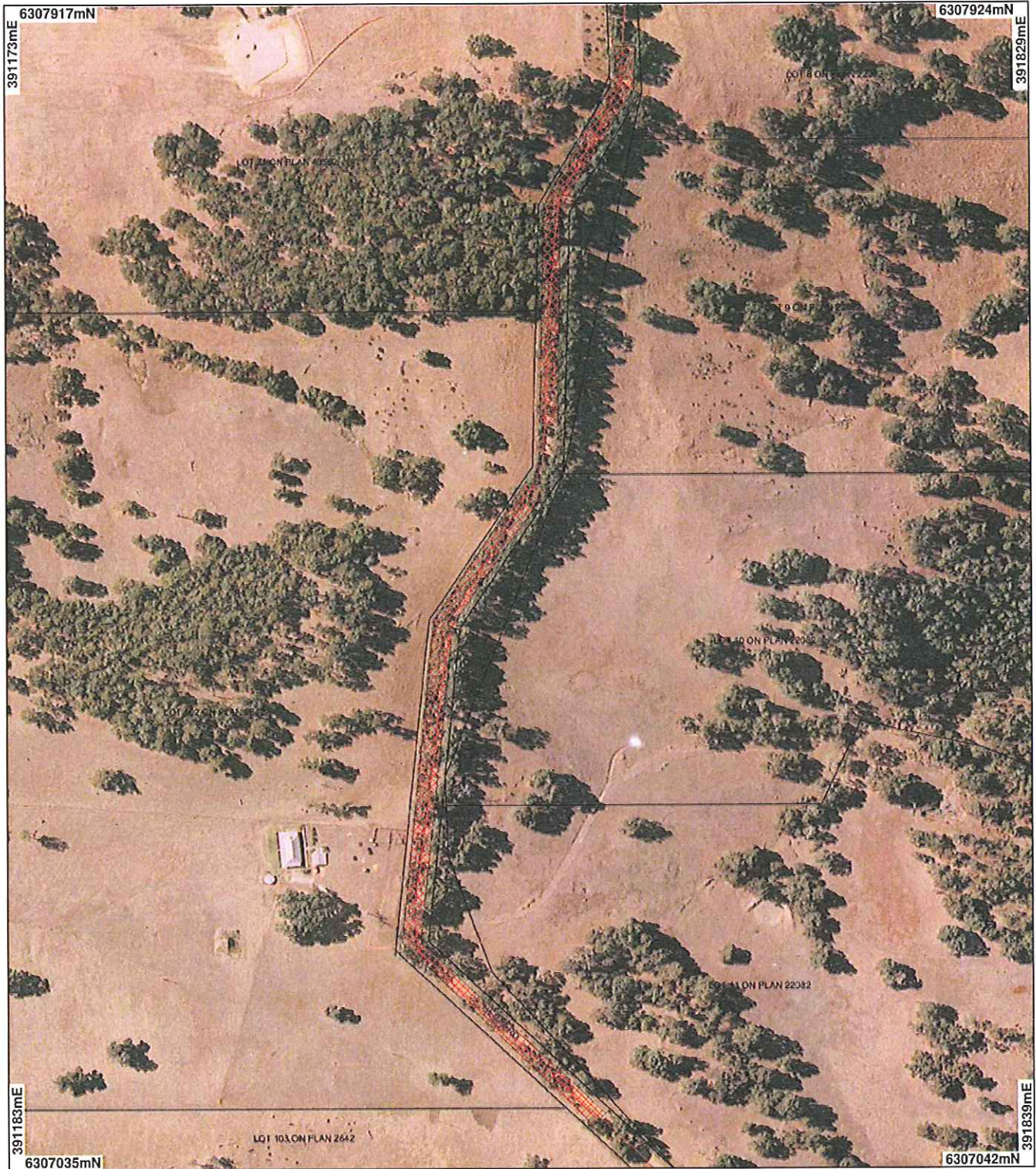
Information derived from this map should be confirmed with the data custodian acknowledged by the agency acronym in the legend.



Department of Environment and Conservation

WA Crown Copyright 2002

Plan 181/3b



LEGEND

- Clearing Instruments
 - Areas Subject to Conditions
 - Road Centrelines
 - Cadastre
- Bunbury 50cm Orthomosaic - Landgate 2006



Scale 1:3882
(Approximate when reproduced at A4)

Geocentric Datum Australia 1994

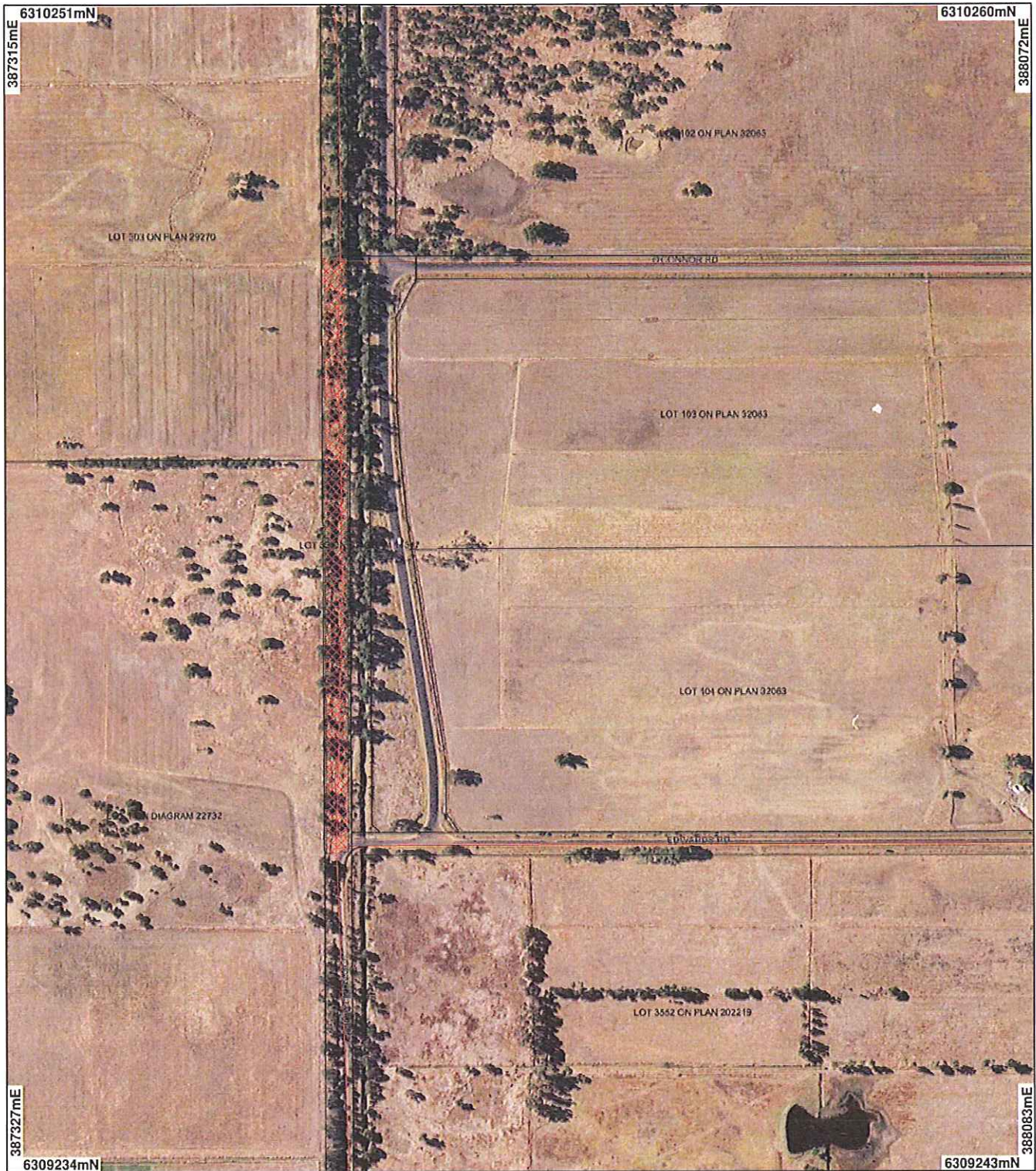
Note: the data in this map have not been projected. This may result in geometric distortion or measurement inaccuracies.

Kear Claymore 12/2/09
Date

K Claymore
Officer with delegated authority under Section 20 of the Environmental Protection Act 1986

Information derived from this map should be confirmed with the data custodian acknowledged by the agency acronym in the legend.

Plan 181/3 c



LEGEND

- Clearing Instruments
 - Areas Subject to Conditions
 - Road Centrelines
 - Cadastre
- Bunbury 50cm Orthomosaic • Landgate 2006



Scale 1:4477
(Approximate when reproduced at A4)

Geocentric Datum Australia 1994

Note: the data in this map have not been projected. This may result in geometric distortion or measurement inaccuracies.

Karin Claymore Date 12/2/09
K Claymore

Officer with delegated authority under Section 20 of the Environmental Protection Act 1986

Information derived from this map should be confirmed with the data custodian acknowledged by the agency acronym in the legend.



Department of Environment and Conservation

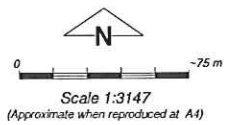
WA Crown Copyright 2002

Plan 181/3 d



LEGEND

- Clearing Instruments
 - Area Subject to Conditions
 - Road Centrelines
 - Cadastre
- Bunbury 50cm Orthomosaic - Landgate 2006



Geocentric Datum Australia 1994

Note: the data in this map have not been projected. This may result in geometric distortion or measurement inaccuracies.

K Claymore Date 12/2/09

K Claymore
Officer with delegated authority under Section 20 of the Environmental Protection Act 1986

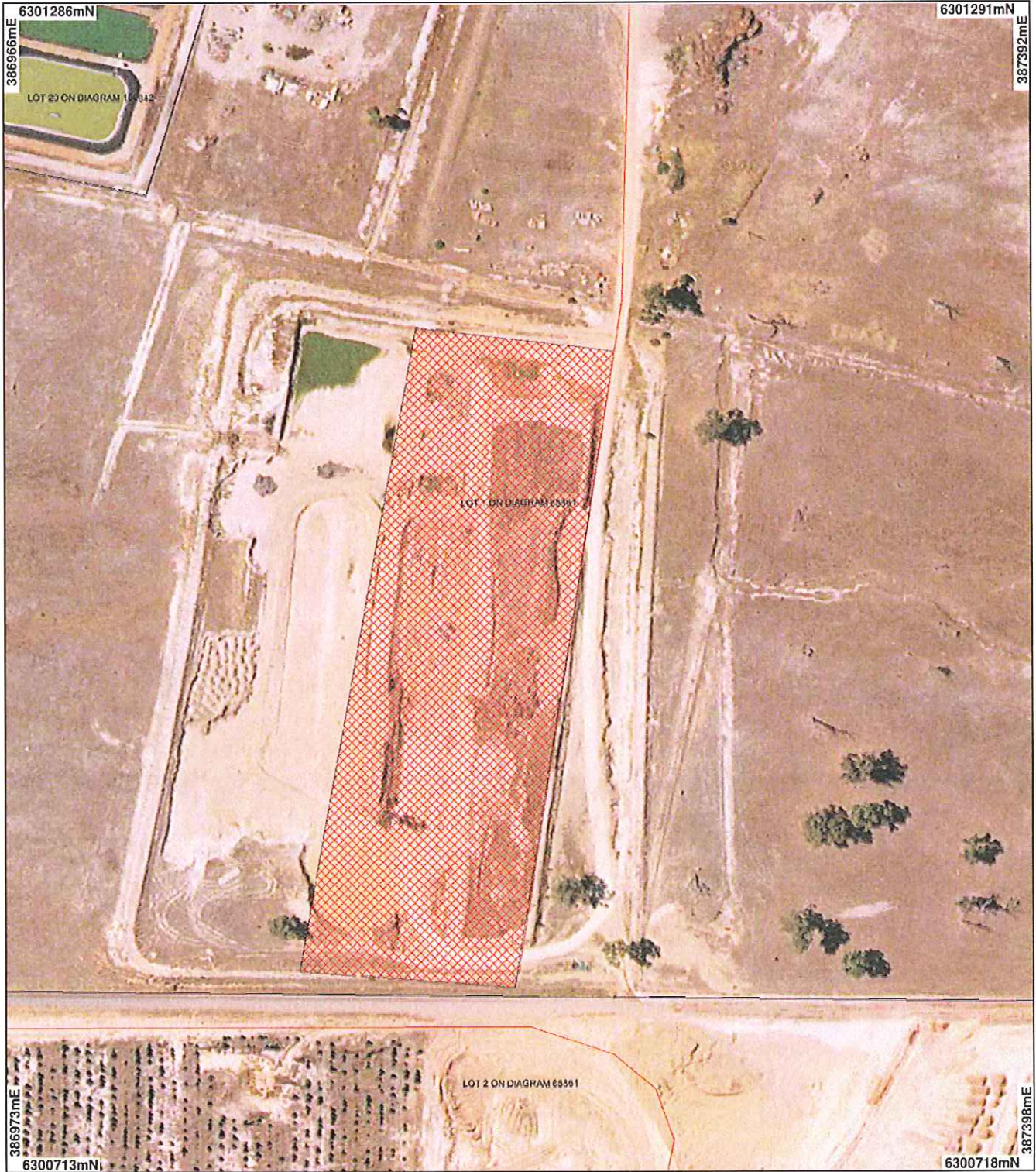
Information derived from this map should be confirmed with the data custodian acknowledged by the agency acronym in the legend.



Department of Environment and Conservation

WA Crown Copyright 2002

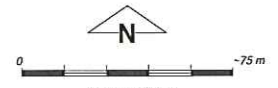
Plan 181/3 e



LEGEND

- Clearing Instruments
- Areas Subject to Conditions
- Road Centrelines
- Cadastre

Bunbury 50cm Orthomosaic -
Landgate 2006



Scale 1:2520
(Approximate when reproduced at A4)

Geocentric Datum Australia 1994

Note: the data in this map have not been projected. This may result in geometric distortion or measurement inaccuracies.

Karin Claymore Date *12/2/09*

K Claymore

Officer with delegated authority under Section 20 of the Environmental Protection Act 1986

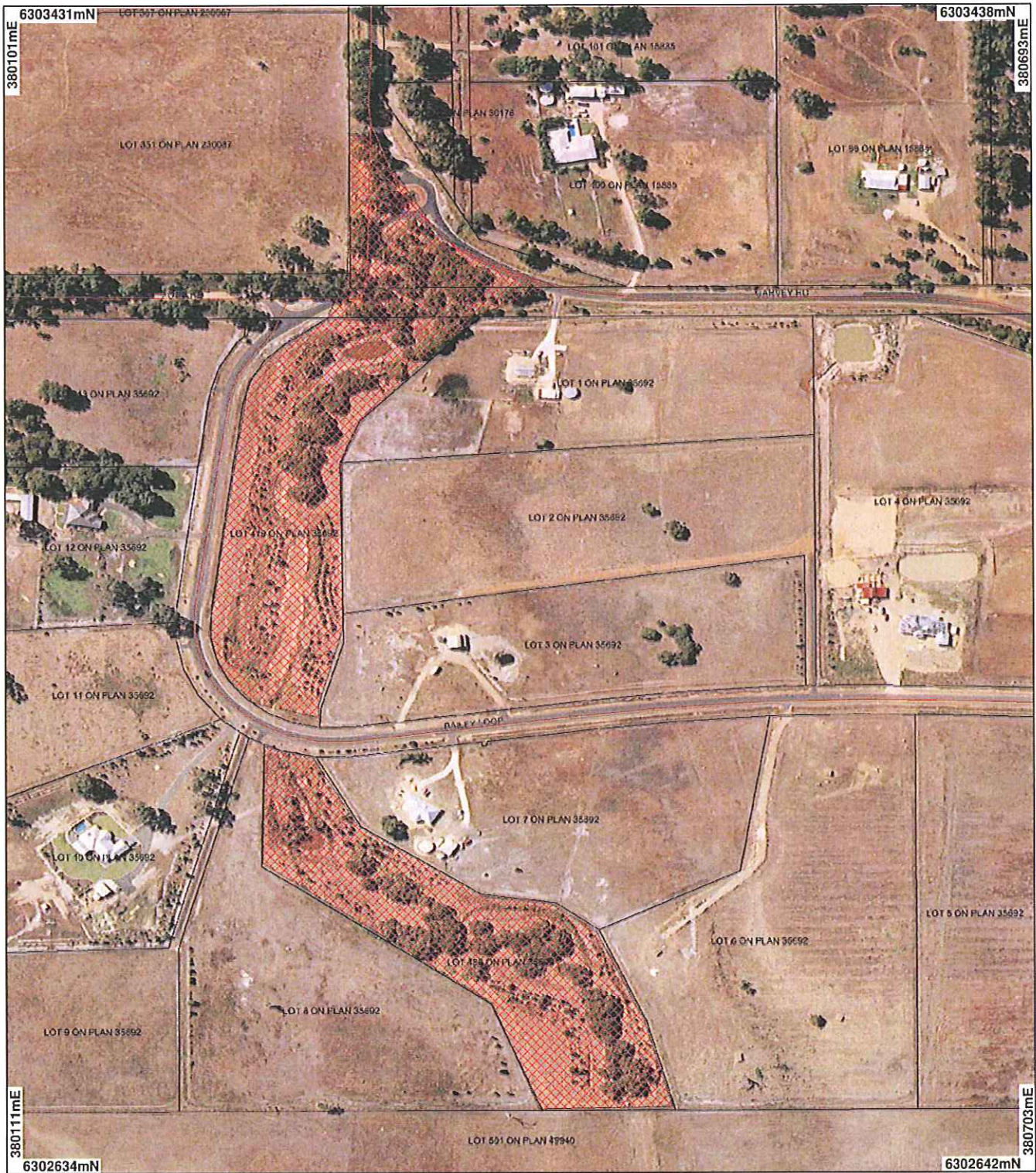
Information derived from this map should be confirmed with the data custodian acknowledged by the agency acronym in the legend.



Department of Environment and Conservation

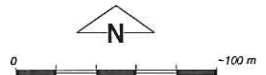
WA Crown Copyright 2002

Plan 181/3 f



LEGEND

- Clearing Instruments
 Areas Subject to Conditions
 Road Centrelines
 Cadastre
- Bunbury 50cm Orthomosaic - Landgate 2006



Scale 1:3502
 (Approximate when reproduced at A4)

Geocentric Datum Australia 1994

Note: the data in this map have not been projected. This may result in geometric distortion or measurement inaccuracies.

Karl Claymore 12/2/09
 K Claymore Date

Officer with delegated authority under Section 20 of the Environmental Protection Act 1986

Information derived from this map should be confirmed with the data custodian acknowledged by the agency acronym in the legend.



Department of Environment and Conservation

WA Crown Copyright 2002