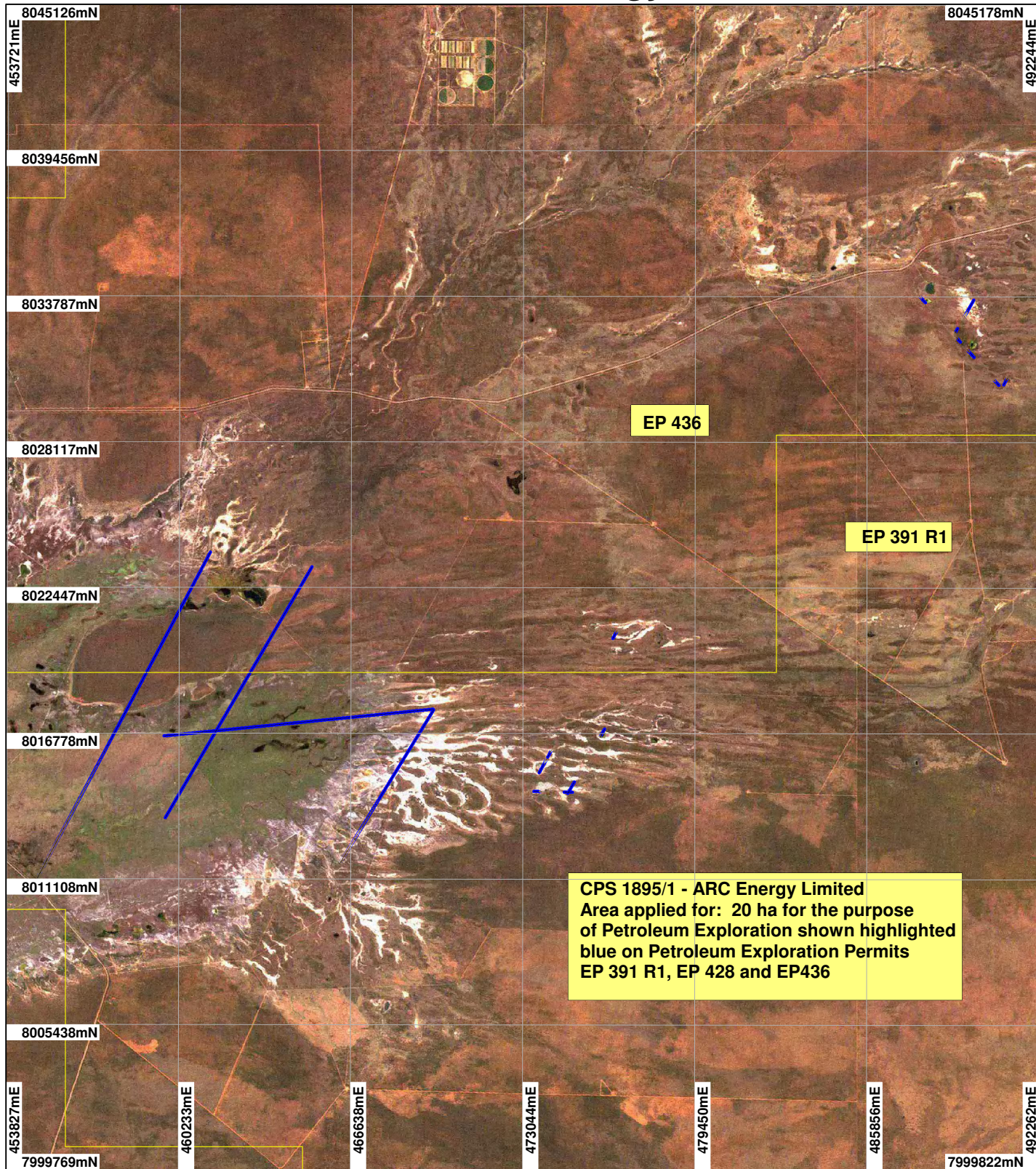


CPS 1895/1 - ARC Energy Limited



CPS 1895/1 - ARC Energy Limited
Area applied for: 20 ha for the purpose
of Petroleum Exploration shown highlighted
blue on Petroleum Exploration Permits
EP 391 R1, EP 428 and EP436

LEGEND

- Clearing Instruments
- Petroleum Titles - DOIR
- Western Australia ETM 25m
543 - AGO 04



Scale 1:210000

(Approximate when reproduced at A4)

Geocentric Datum Australia 1994

Note: the data in this map have not been projected. This may result in geometric distortion or measurement inaccuracies.

..... Date

Officer with delegated authority under Section 20 of the Environmental Protection Act 1986

Information derived from this map should be confirmed with the data custodian acknowledged by the agency acronym in the legend.



WA Crown Copyright 2002