

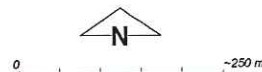
# Plan 1917/1a



## LEGEND

Clearing Instruments

- Areas Approved to Clear
- Cadastre - DLI



Scale 1:8810

(Approximate when reproduced at A4)

Geocentric Datum Australia 1994

Note: the data in this map have not been projected. This may result in geometric distortion or measurement inaccuracies.

*Kear-chun* Date *9/12/07*  
K Claymore  
Officer with delegated authority under Section 20 of the Environmental Protection Act 1986

Information derived from this map should be confirmed with the data custodian acknowledged by the agency acronym in the legend.



Department of  
Environment and Conservation

WA Crown Copyright 2002



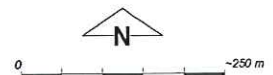
# Plan 1917/1b



## LEGEND

Clearing Instruments

- Areas Approved to Clear
- Cadastre - DLI



Scale 1:8810

(Approximate when reproduced at A4)

Geocentric Datum Australia 1994

Note: the data in this map have not been projected. This may result in geometric distortion or measurement inaccuracies.

*Kirschner* Date *6/12/07*  
K Claymore

Officer with delegated authority under Section 20 of the Environmental Protection Act 1986

Information derived from this map should be confirmed with the data custodian acknowledged by the agency acronym in the legend.



Department of Environment and Conservation

WA Crown Copyright 2002



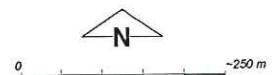
# Plan 1917/1c



## LEGEND

Clearing Instruments

- Areas Approved to Clear
- Cadastre - DLI



Scale 1:8809

(Approximate when reproduced at A4)

Geocentric Datum Australia 1994

Note: the data in this map have not been projected. This may result in geometric distortion or measurement inaccuracies.

*K. Claymore* Date *6/12/07*  
K Claymore

Officer with delegated authority under Section 20 of the Environmental Protection Act 1986

Information derived from this map should be confirmed with the data custodian acknowledged by the agency acronym in the legend.

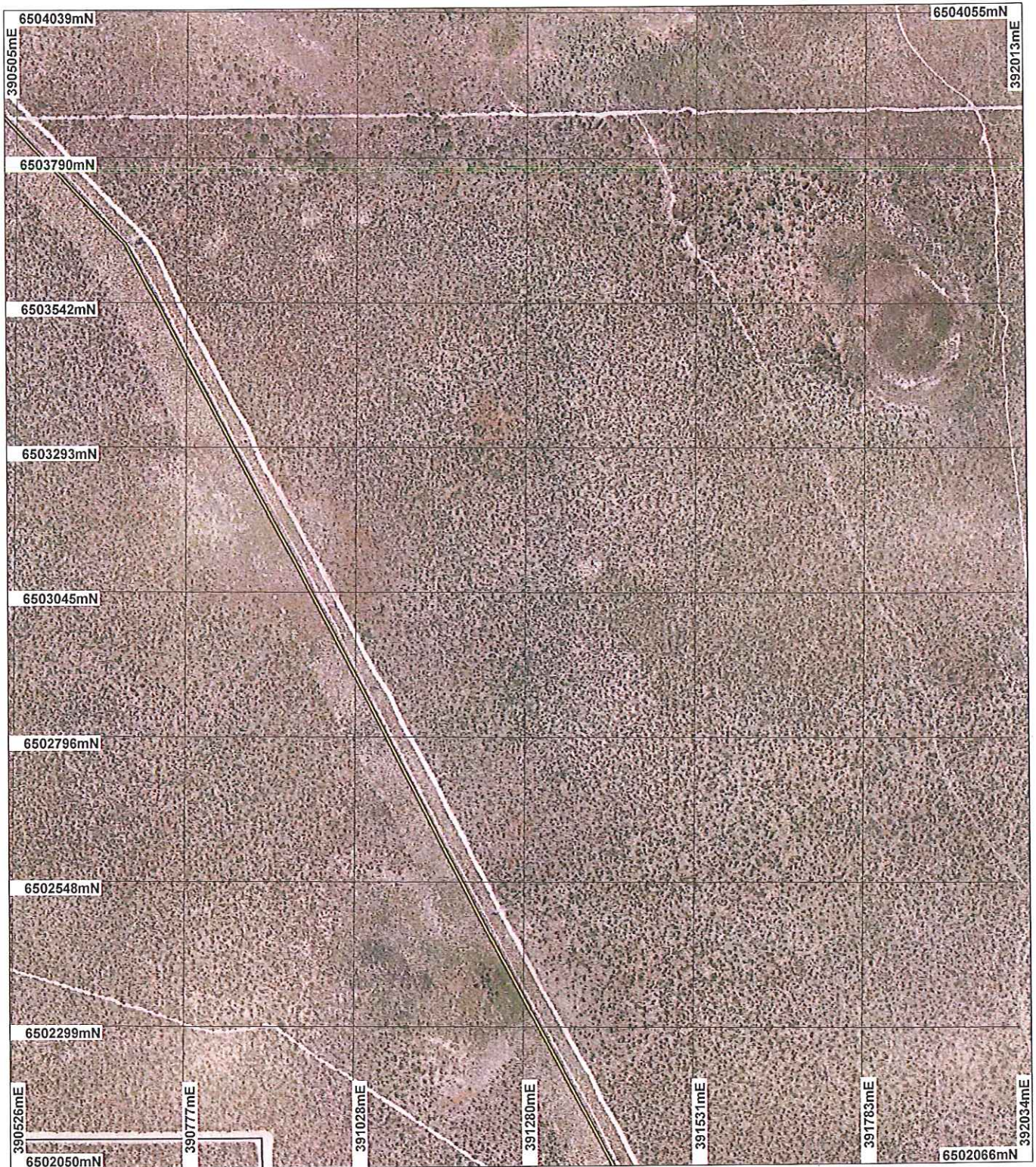


Department of Environment and Conservation

WA Crown Copyright 2002



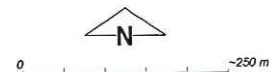
# Plan 1917/1d



## LEGEND

Cleaning Instruments

- ☒ Areas Approved to Clear
- ☐ Cadastre - DLI



Scale 1:8809

(Approximate when reproduced at A4)

Geocentric Datum Australia 1994

Note: the data in this map have not been projected. This may result in geometric distortion or measurement inaccuracies.

K Claymore

Officer with delegated authority under Section 20 of the Environmental Protection Act 1986

Information derived from this map should be confirmed with the data custodian acknowledged by the agency acronym in the legend.



Department of Environment and Conservation

WA Crown Copyright 2002

\* Project Data. This data has not been quality assured. Please contact map author for details.



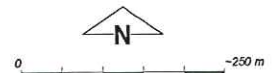
# Plan 1917/1e



## LEGEND

Clearing Instruments

- Areas Approved to Clear
- Cadastre - DLI



Scale 1:8808

(Approximate when reproduced at A4)

Geocentric Datum Australia 1994

Note: the data in this map have not been projected. This may result in geometric distortion or measurement inaccuracies.

*K. Claymore* Date *6/2/07*  
K Claymore

Officer with delegated authority under Section 20 of the Environmental Protection Act 1986

Information derived from this map should be confirmed with the data custodian acknowledged by the agency acronym in the legend.

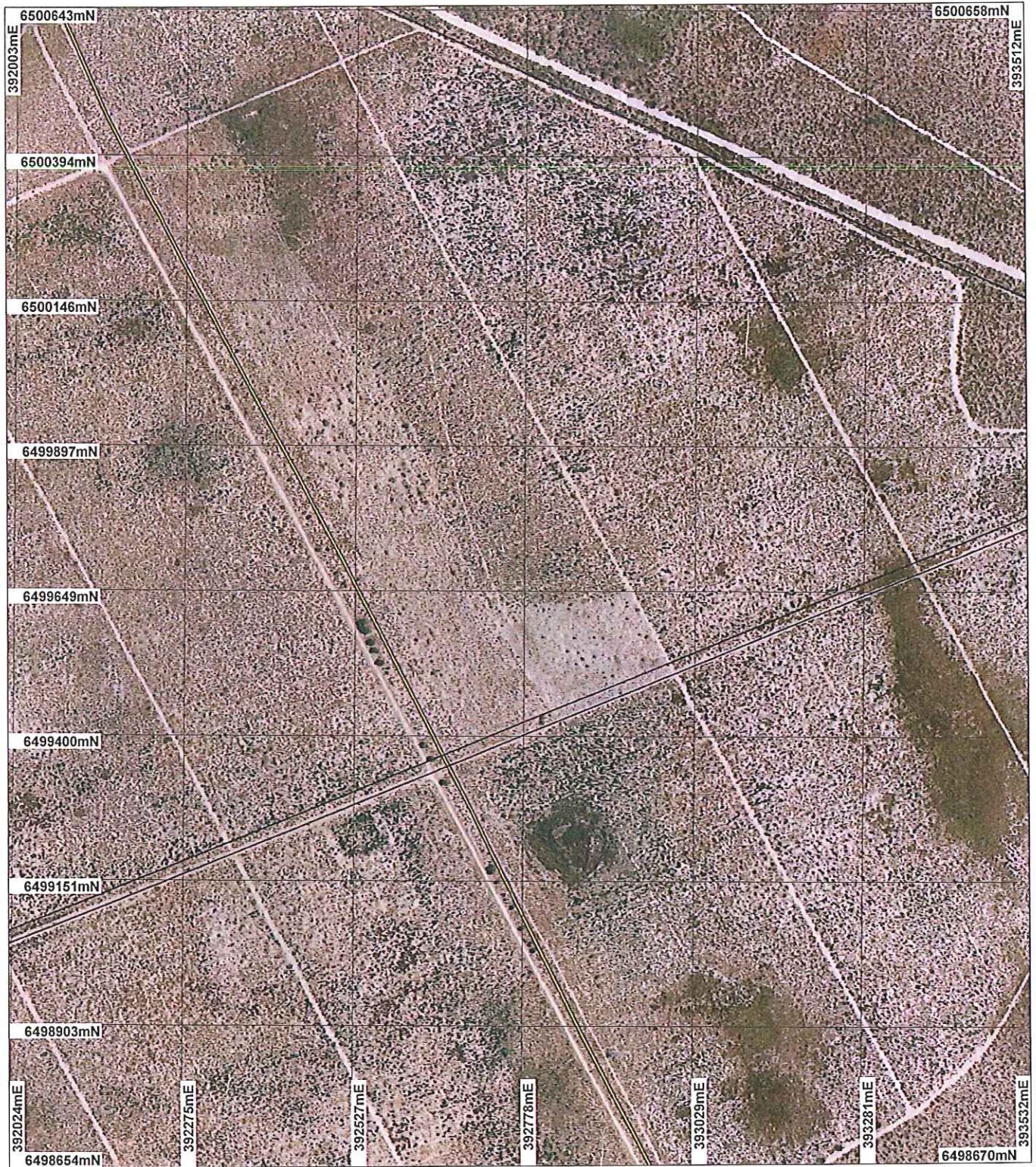


Department of  
Environment and Conservation

WA Crown Copyright 2002



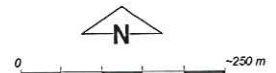
# Plan 1917/1f



## LEGEND

### Clearing Instruments

- ☒ Areas Approved to Clear
- ☐ Cadastre - DLI



Scale 1:8807

(Approximate when reproduced at A4)

Geocentric Datum Australia 1994

Note: the data in this map have not been projected. This may result in geometric distortion or measurement inaccuracies.

*Kirchynne* Date *6/12/07*  
K Claymore

Officer with delegated authority under Section 20 of the Environmental Protection Act 1986

Information derived from this map should be confirmed with the data custodian acknowledged by the agency acronym in the legend.

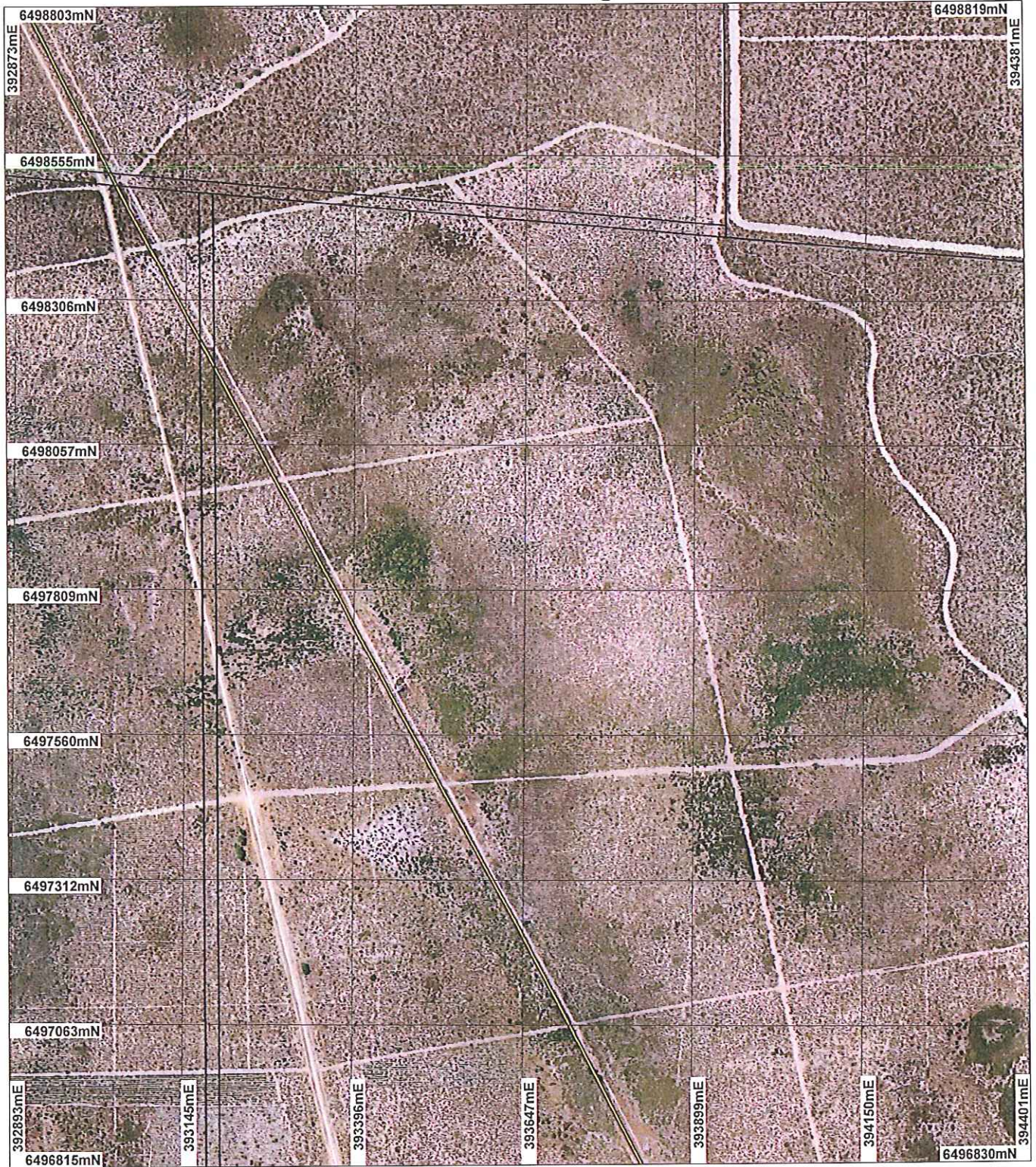


Department of Environment and Conservation

WA Crown Copyright 2002



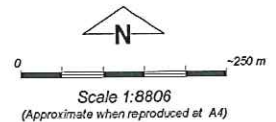
# Plan 1917/1g



## LEGEND

Clearing Instruments

- ☒ Areas Approved to Clear
- ☐ Cadastre - DLI



Geocentric Datum Australia 1994

Note: the data in this map have not been projected. This may result in geometric distortion or measurement inaccuracies.

*Keith Claymore* Date *6/12/07*  
K Claymore

Officer with delegated authority under Section 20 of the Environmental Protection Act 1986

Information derived from this map should be confirmed with the data custodian acknowledged by the agency acronym in the legend.



Department of  
Environment and Conservation

WA Crown Copyright 2002



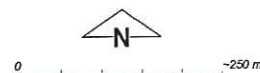
# Plan 1917/1h



## LEGEND

Cleaning Instruments

- Areas Approved to Clear
- Cadastre - DLI



Scale 1:8806

(Approximate when reproduced at A4)

Geocentric Datum Australia 1994

Note: the data in this map have not been projected. This may result in geometric distortion or measurement inaccuracies.

*K. Claymore* Date: *6/12/07*  
K. Claymore

Officer with delegated authority under Section 20 of the Environmental Protection Act 1986

Information derived from this map should be confirmed with the data custodian acknowledged by the agency acronym in the legend.



Department of  
Environment and Conservation

WA Crown Copyright 2002

\* Project Data. This data has not been quality assured. Please contact map author for details.



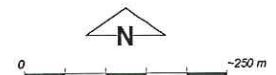
# Plan 1917/1i



## LEGEND

Clearing Instruments

- ☒ Areas Approved to Clear
- ☐ Cadastre - DLI



Scale 1:8805

(Approximate when reproduced at A4)

Geocentric Datum Australia 1994

Note: the data in this map have not been projected. This may result in geometric distortion or measurement inaccuracies.

*Kirschner* Date 6/12/07  
K Claymore

Officer with delegated authority under Section 20 of the Environmental Protection Act 1986

Information derived from this map should be confirmed with the data custodian acknowledged by the agency acronym in the legend.



Department of Environment and Conservation

WA Crown Copyright 2002



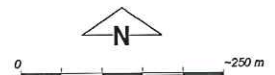
# Plan 1917/1j



## LEGEND

Clearing Instruments

- Areas Approved to Clear
- Cadastre - DLI



Scale 1:8805

(Approximate when reproduced at A4)

Geocentric Datum Australia 1994

Note: the data in this map have not been projected. This may result in geometric distortion or measurement inaccuracies.

*K. Claymore* Date *6/12/07*  
K Claymore

Officer with delegated authority under Section 20 of the Environmental Protection Act 1986

Information derived from this map should be confirmed with the data custodian acknowledged by the agency acronym in the legend.

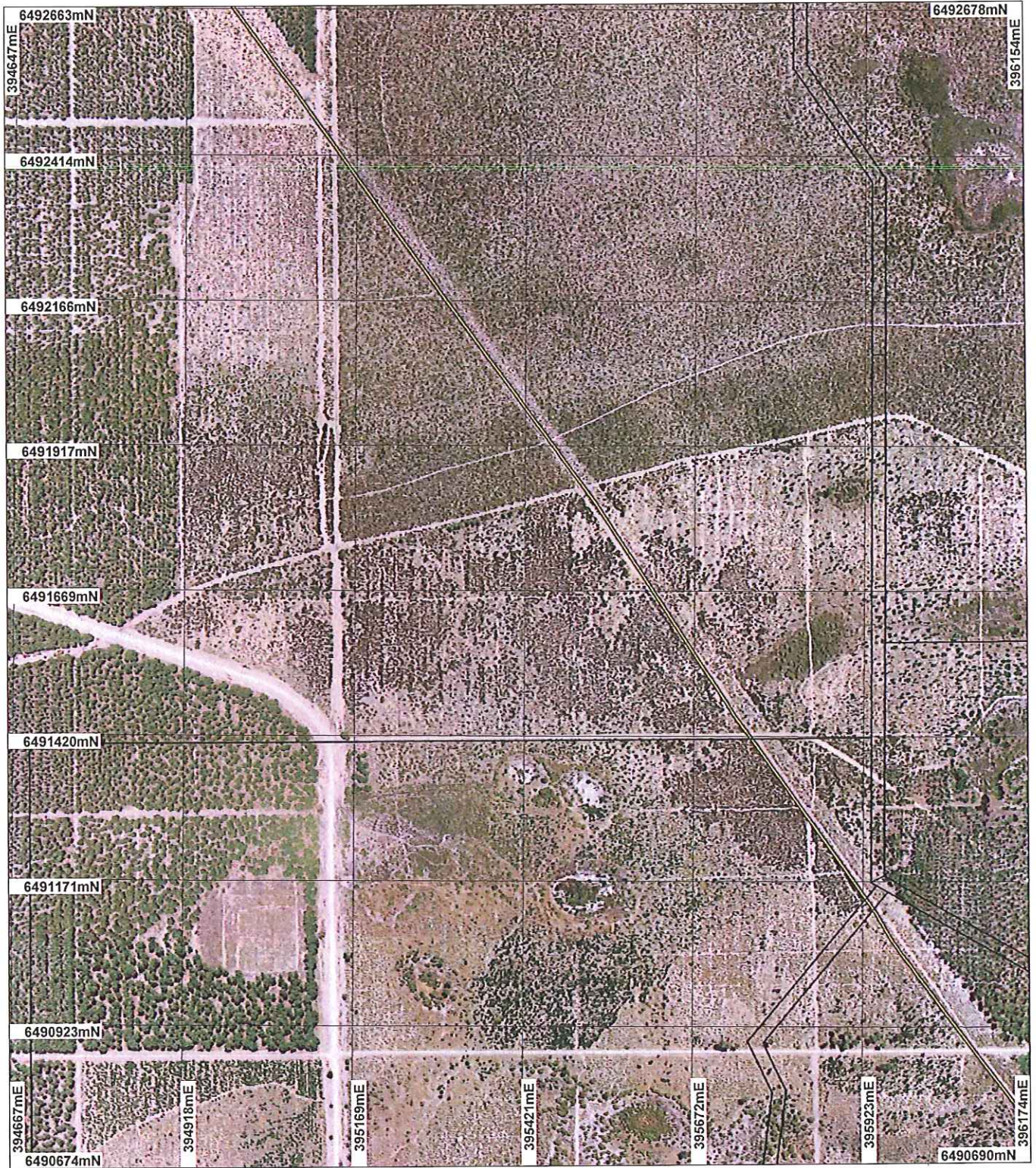


Department of Environment and Conservation

WA Crown Copyright 2002

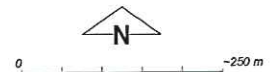


# Plan 1917/1k



## LEGEND

- Clearing Instruments
- Areas Approved to Clear
  - Cadastre - DLI



(Approximate when reproduced at A4)

Geocentric Datum Australia 1994

Note: the data in this map have not been projected. This may result in geometric distortion or measurement inaccuracies.

*Karin Claymore* Date *6/12/07*  
K Claymore

Officer with delegated authority under Section 20 of the Environmental Protection Act 1986

Information derived from this map should be confirmed with the data custodian acknowledged by the agency acronym in the legend.

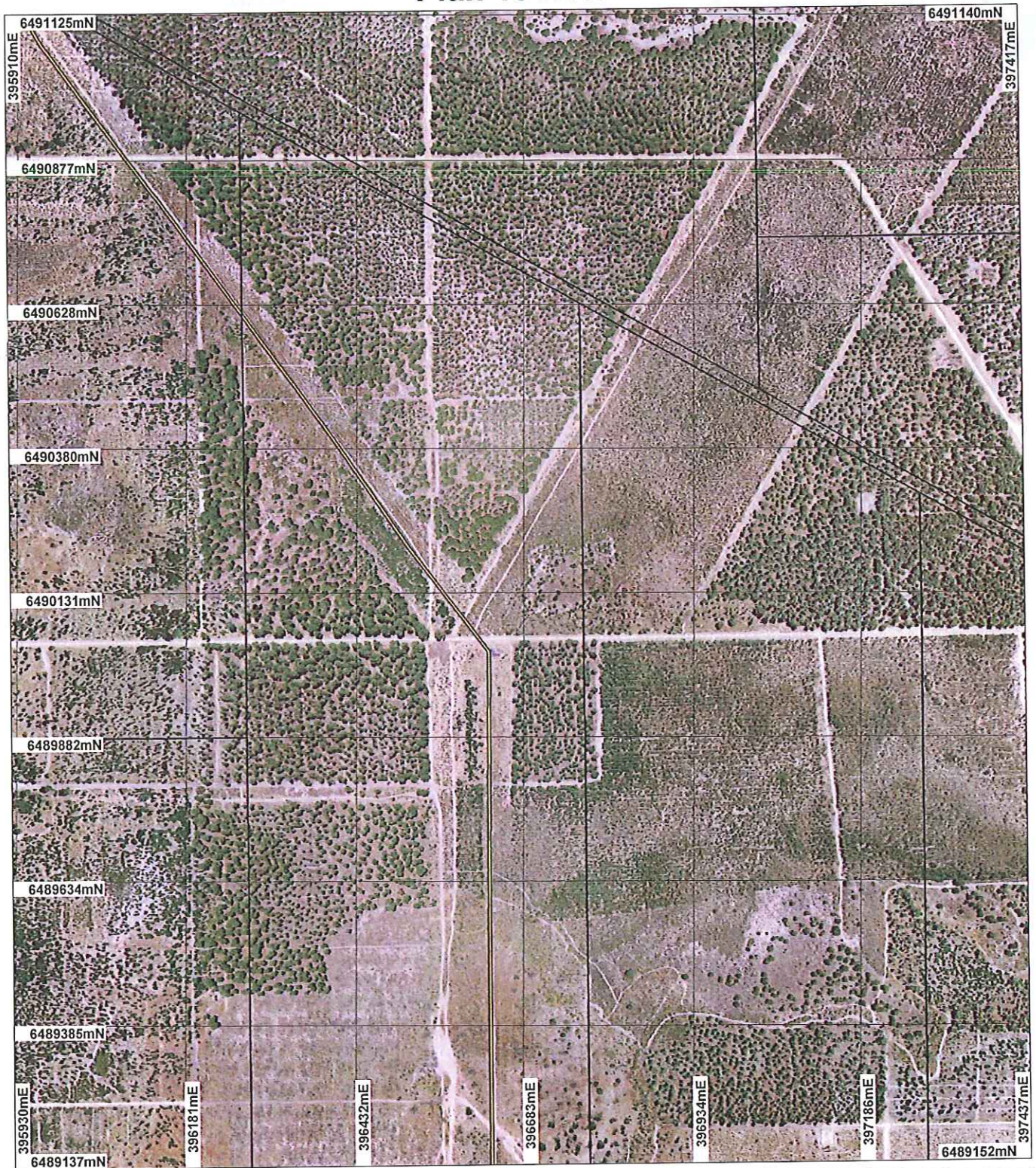


Department of  
Environment and Conservation

WA Crown Copyright 2002



# Plan 1917/1I



## LEGEND

Cleaning Instruments

- ☒ Areas Approved to Clear
- ☐ Cadastre - DLI



Scale 1:8803

(Approximate when reproduced at A4)

Geocentric Datum Australia 1994

Note: the data in this map have not been projected. This may result in geometric distortion or measurement inaccuracies.

*K. Claymore* Date *6/12/07*

K Claymore

Officer with delegated authority under Section 20 of the Environmental Protection Act 1986

Information derived from this map should be confirmed with the data custodian acknowledged by the agency acronym in the legend.

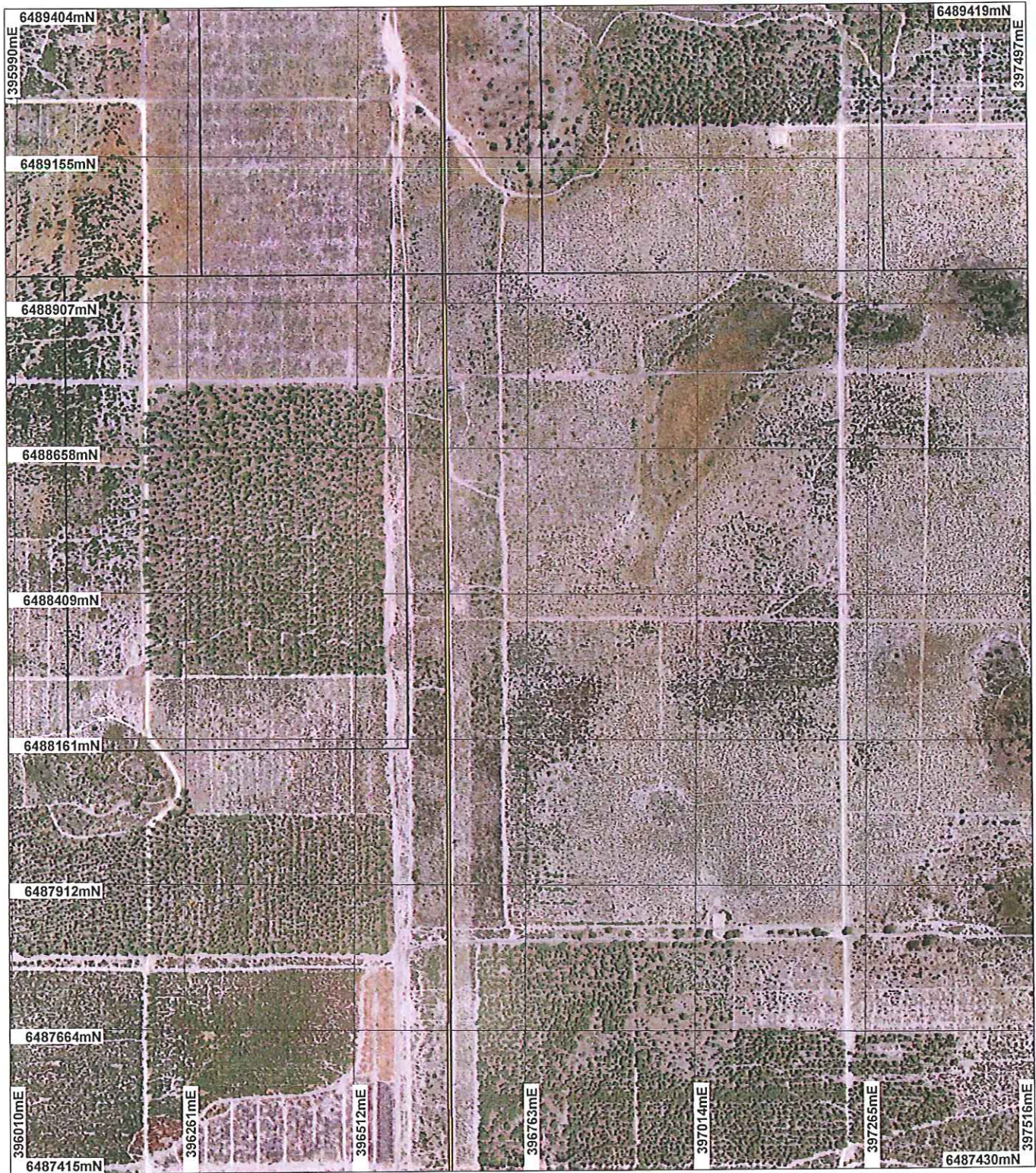


Department of Environment and Conservation

WA Crown Copyright 2002



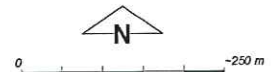
# Plan 1917/1m



## LEGEND

Clearing Instruments

- Areas Approved to Clear
- Cadastre - DLI



Scale 1:8803

(Approximate when reproduced at A4)

Geocentric Datum Australia 1994

Note: the data in this map have not been projected. This may result in geometric distortion or measurement inaccuracies.

*K. Claymore* Date *6/12/07*  
K Claymore

Officer with delegated authority under Section 20 of the Environmental Protection Act 1986

Information derived from this map should be confirmed with the data custodian acknowledged by the agency acronym in the legend.



Department of Environment and Conservation

WA Crown Copyright 2002



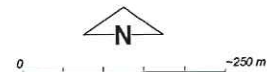
# Plan 1917/1n



## LEGEND

Clearing Instruments

- Areas Approved to Clear
- Cadastre - DLI



Scale 1:8802

(Approximate when reproduced at A4)

Geocentric Datum Australia 1994

Note: the data in this map have not been projected. This may result in geometric distortion or measurement inaccuracies.

*K. Claymore* Date *6/12/07*  
K Claymore

Officer with delegated authority under Section 20 of the Environmental Protection Act 1986

Information derived from this map should be confirmed with the data custodian acknowledged by the agency acronym in the legend.



Department of  
Environment and Conservation

WA Crown Copyright 2002



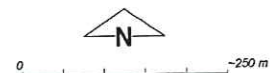
# Plan 1917/1o



## LEGEND

Clearing Instruments

- ☒ Areas Approved to Clear
- ☐ Cadastre - DLI



Scale 1:8801

(Approximate when reproduced at A4)

Geocentric Datum Australia 1994

Note: the data in this map have not been projected. This may result in geometric distortion or measurement inaccuracies.

*Kindy* Date *6/12/07*  
K Claymore

Officer with delegated authority under Section 20 of the Environmental Protection Act 1986

Information derived from this map should be confirmed with the data custodian acknowledged by the agency acronym in the legend.



Department of Environment and Conservation

WA Crown Copyright 2002



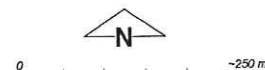
# Plan 1917/1p



## LEGEND

Clearing Instruments

- Areas Approved to Clear
- Cadastre - DLI



Scale 1:8801

(Approximate when reproduced at A4)

Geocentric Datum Australia 1994

Note: the data in this map have not been projected. This may result in geometric distortion or measurement inaccuracies.

*K. Claymore* Date *6/12/07*  
K Claymore

Officer with delegated authority under Section 20 of the Environmental Protection Act 1986

Information derived from this map should be confirmed with the data custodian acknowledged by the agency acronym in the legend.



Department of  
Environment and Conservation

WA Crown Copyright 2002

\* Project Data. This data has not been quality assured. Please contact map author for details.

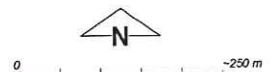


# Plan 1917/1q



## LEGEND

- Clearing Instruments
- Areas Approved to Clear
  - Cadastre - DLI



Scale 1:8800

(Approximate when reproduced at A4)

Geocentric Datum Australia 1994

Note: the data in this map have not been projected. This may result in geometric distortion or measurement inaccuracies.

*Kevin Claymore* Date *6/12/07*  
K Claymore

Officer with delegated authority under Section 20 of the Environmental Protection Act 1986

Information derived from this map should be confirmed with the data custodian acknowledged by the agency acronym in the legend.



Department of Environment and Conservation

WA Crown Copyright 2002



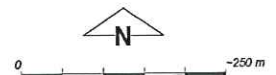
# Plan 1917/1r



## LEGEND

Clearing Instruments

- Areas Approved to Clear
- Cadastre - DLI



Scale 1:8800

(Approximate when reproduced at A4)

Geocentric Datum Australia 1994

Note: the data in this map have not been projected. This may result in geometric distortion or measurement inaccuracies.

*K. Claymore* Date *6/12/07*  
K Claymore

Officer with delegated authority under Section 20 of the Environmental Protection Act 1986

Information derived from this map should be confirmed with the data custodian acknowledged by the agency acronym in the legend.



Department of  
Environment and Conservation

WA Crown Copyright 2002