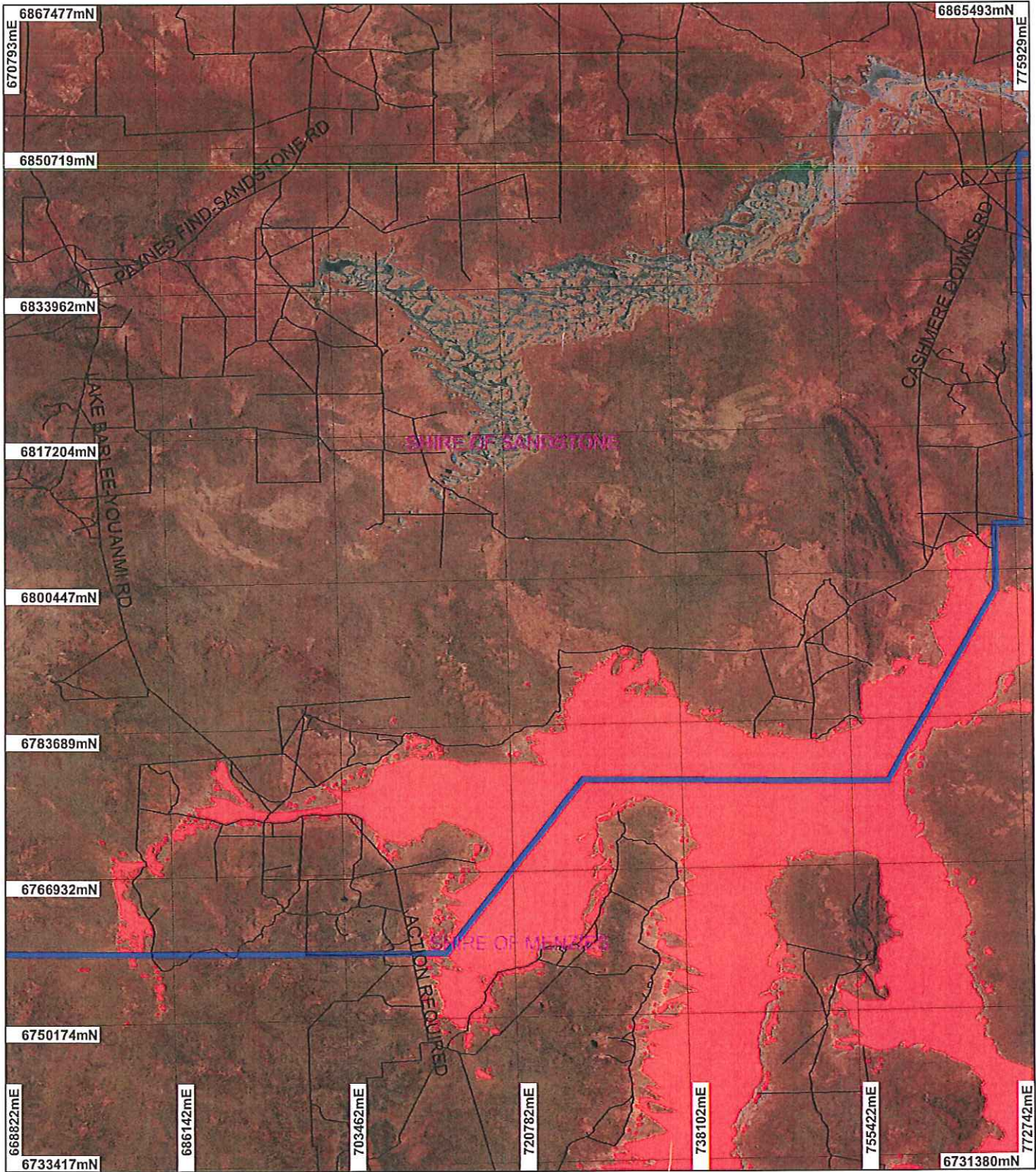
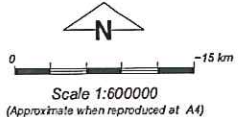


Plan 1934/1a



LEGEND

- Clearing Regulations - Environmentally Sensitive Areas - DOE 30/5/05
- Local Government Authorities - DLI
- Road Centrelines - DLI 1/5/04
- Western Australia ETM 25m 543 - AGO 2002



Geocentric Datum Australia 1994

Note: the data in this map have not been projected. This may result in geometric distortion or measurement inaccuracies.

Kait Claymore Date *29/1/07*
K Claymore

Officer with delegated authority under Section 20 of the Environmental Protection Act 1986

Information derived from this map should be confirmed with the data custodian acknowledged by the agency acronym in the legend.

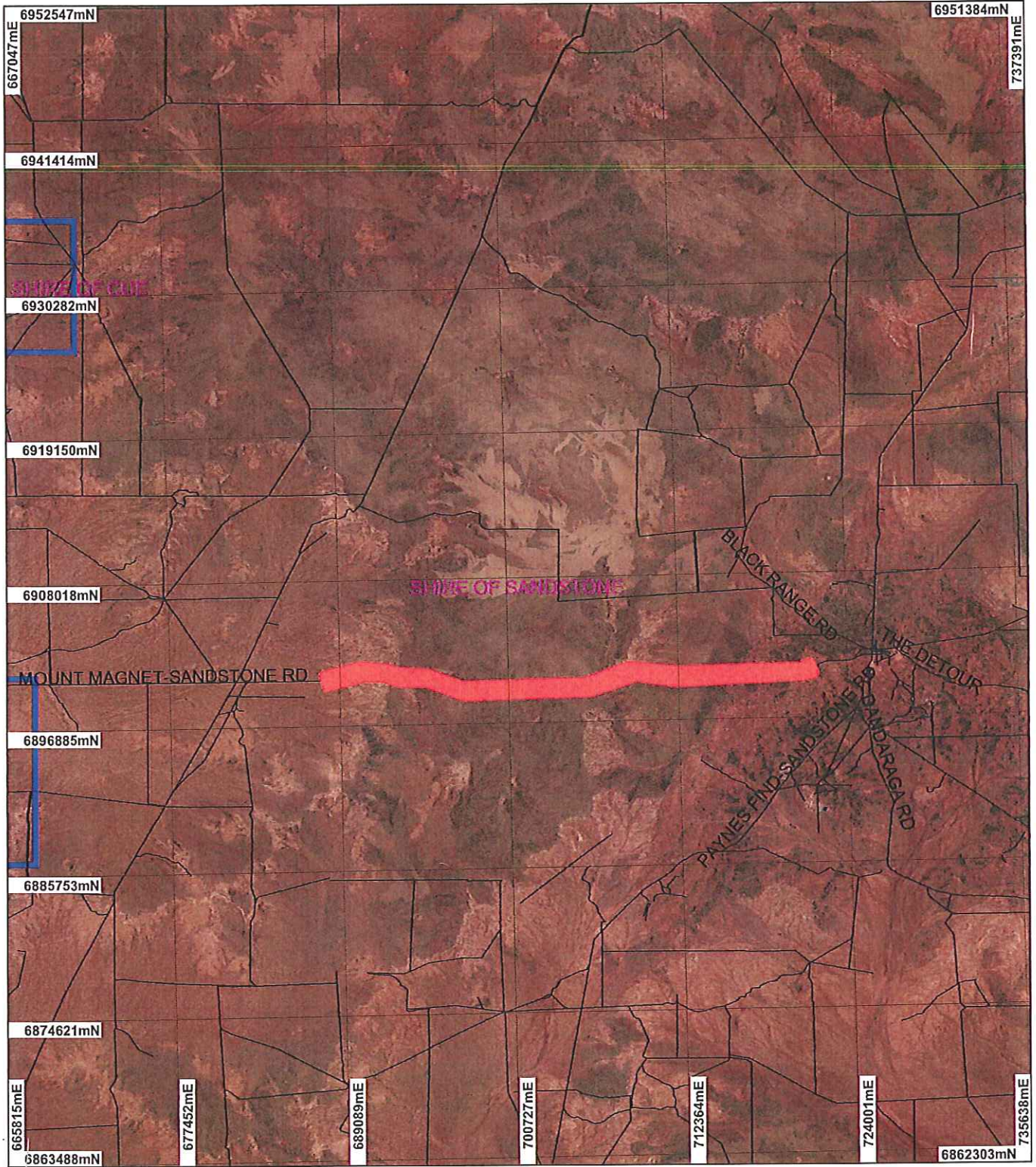


Department of Environment and Conservation

WA Crown Copyright 2002

* Project Data is denoted by asterisk. This data has not been quality assured. Please contact map author for details.

Plan 1934/1b



LEGEND

-  Local Government Authorities - DLI
-  Road Centrelines - DLI 1/5/04
- Western Australia ETM 25m
543 - AGO 2002



Scale 1:400000
(Approximate when reproduced at A4)

Geocentric Datum Australia 1994

Note: the data in this map have not been projected. This may result in geometric distortion or measurement inaccuracies.

Kris Claymore Date 29/6/07
K Claymore

Officer with delegated authority under Section 20 of the Environmental Protection Act 1986

Information derived from this map should be confirmed with the data custodian acknowledged by the agency acronym in the legend.

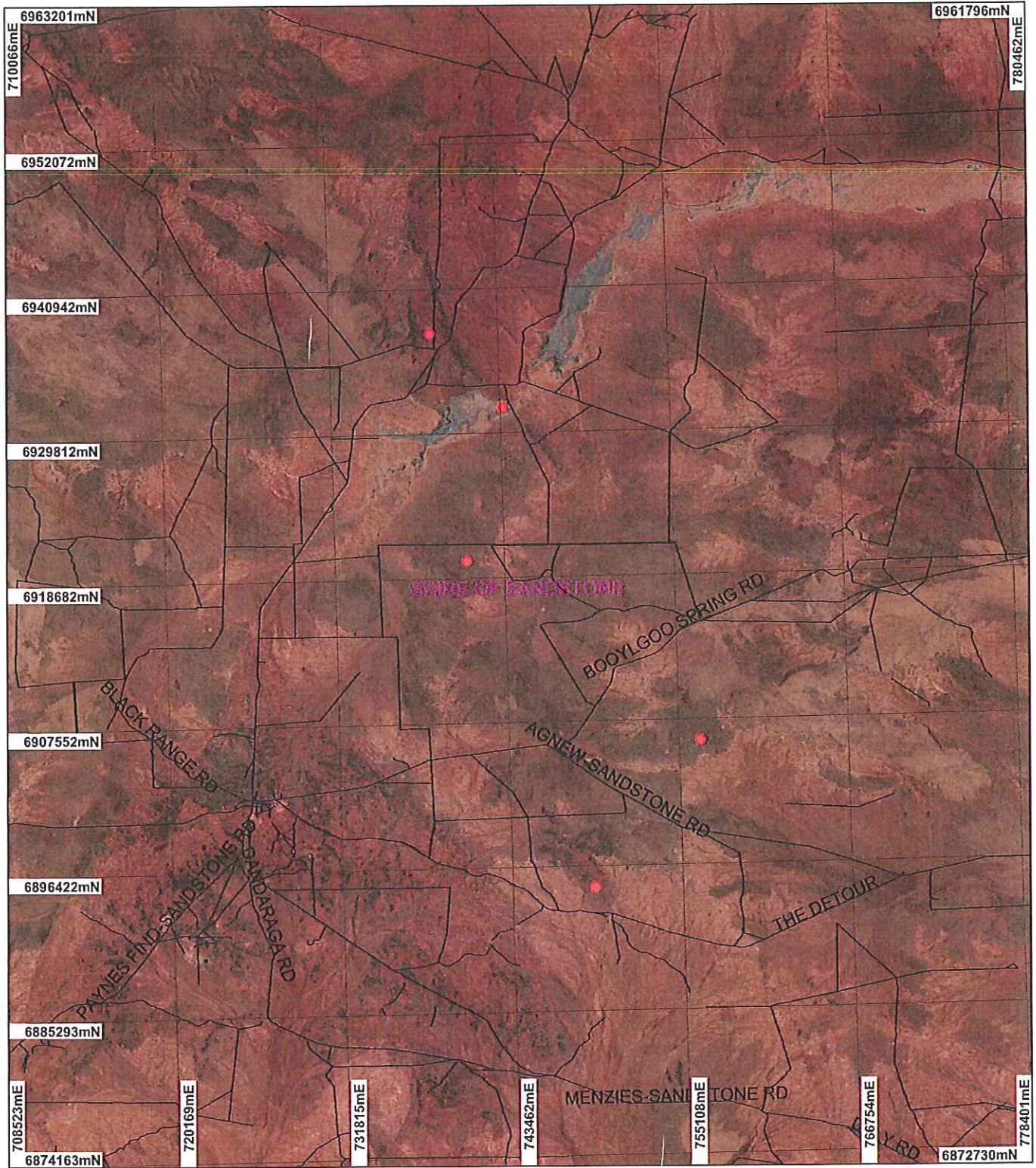


Department of Environment and Conservation

WA Crown Copyright 2002

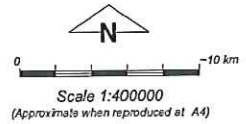
* Project Data is denoted by asterisk. This data has not been quality assured. Please contact map author for details.

Plan 1934/1c



LEGEND

- Local Government Authorities - DLI
- Road Centrelines - DLI 1/5/04
- defl *
- Western Australia ETM 25m
543 - AGO 2002



Geocentric Datum Australia 1994
 Note: the data in this map have not been projected. This may result in geometric distortion or measurement inaccuracies.

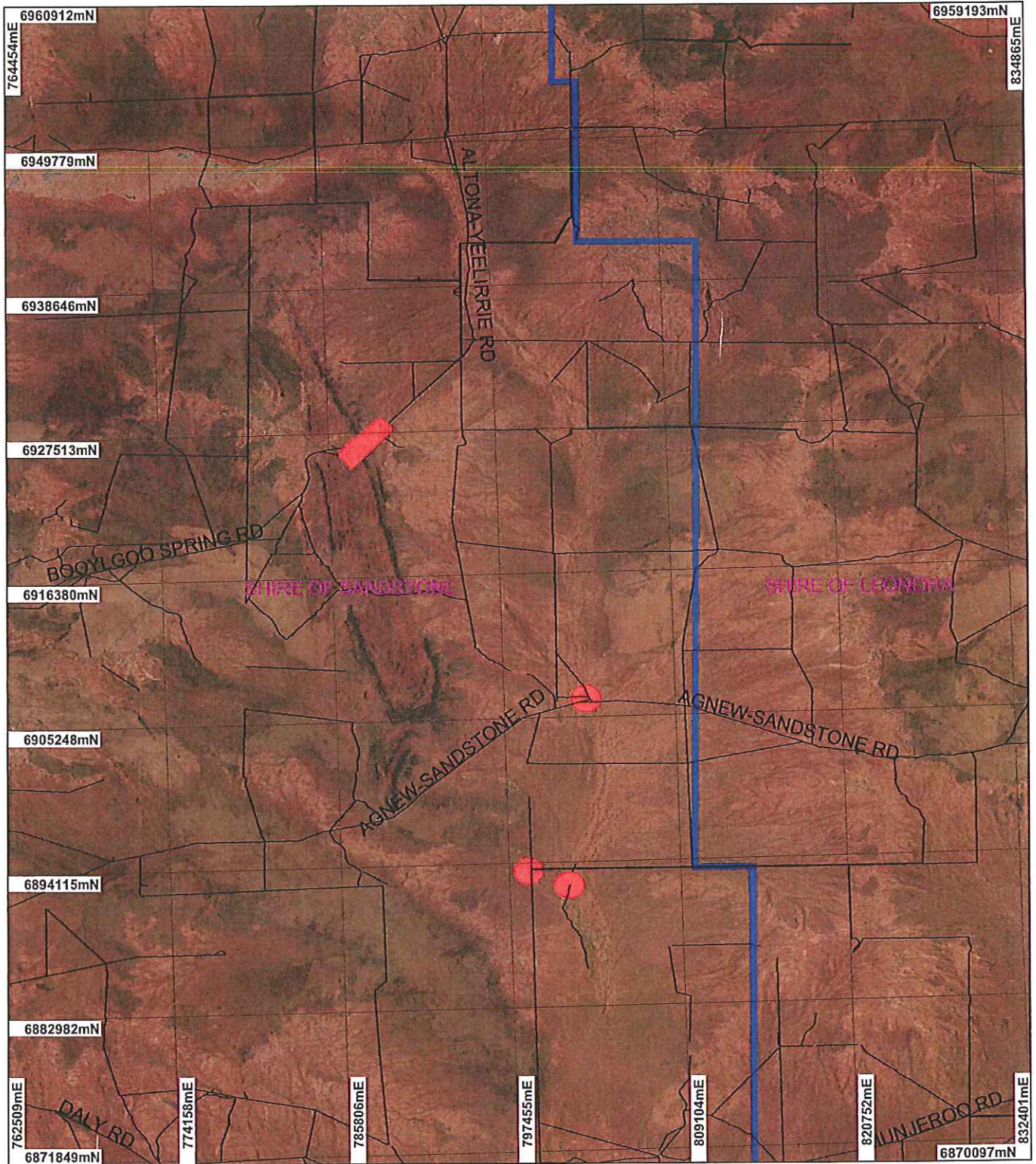
Kirsty Claymore Date 29/1/07
 K Claymore

Officer with delegated authority under Section 20 of the Environmental Protection Act 1986
 Information derived from this map should be confirmed with the data custodian acknowledged by the agency acronym in the legend.



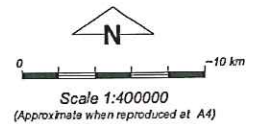
* Project Data is denoted by asterisk. This data has not been quality assured. Please contact map author for details.

Plan 1934/1d



LEGEND

- Clearing Regulations - Environmentally Sensitive Areas - DOE 30/5/05
- Local Government Authorities - DLI
- Road Centrelines - DLI 1/5/04
Western Australia ETM 25m
543 - AGO 2002



Geocentric Datum Australia 1994

Note: the data in this map have not been projected. This may result in geometric distortion or measurement inaccuracies.

K. Claymore 23/6/07
K Claymore

Officer with delegated authority under Section 20 of the Environmental Protection Act 1986

Information derived from this map should be confirmed with the data custodian acknowledged by the agency acronym in the legend.

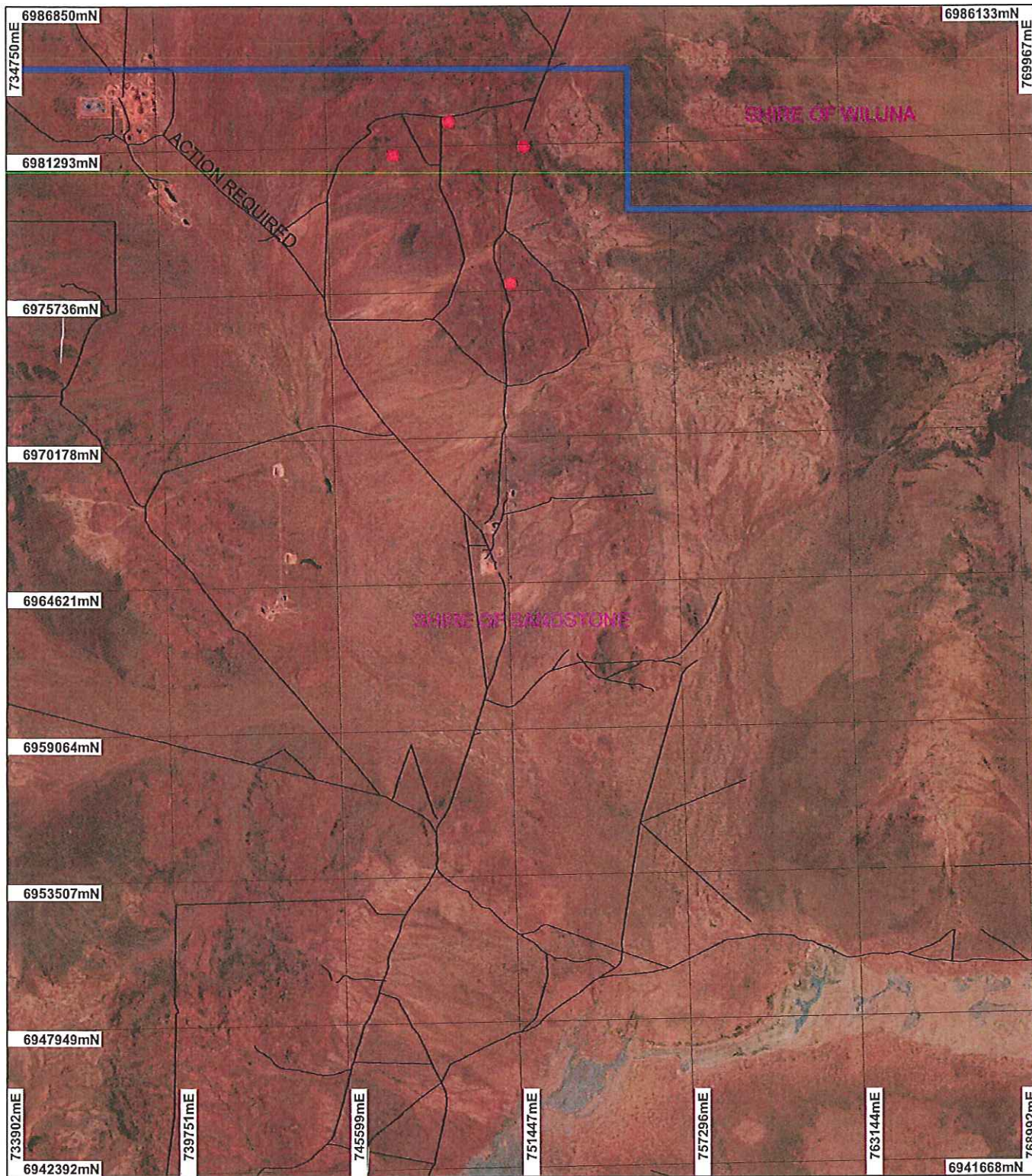


Department of Environment and Conservation

WA Crown Copyright 2002

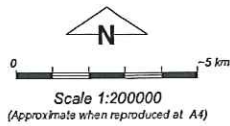
* Project Data is denoted by asterisk. This data has not been quality assured. Please contact map author for details.

Plan 1934/1e



LEGEND

- Local Government Authorities - DLI
- Western Australia ETM 25m 543 - AGO 2002
- Road Centrelines - DLI 1/5/04
- defl *
- goldfields_waherb *



Geocentric Datum Australia 1994
 Note: the data in this map have not been projected. This may result in geometric distortion or measurement inaccuracies.

Kirsty Claymore Date 29/1/07
 K. Claymore

Officer with delegated authority under Section 20 of the Environmental Protection Act 1986
 Information derived from this map should be confirmed with the data custodian acknowledged by the agency acronym in the legend.



WA Crown Copyright 2002

* Project Data is denoted by asterisk. This data has not been quality assured. Please contact map author for details.