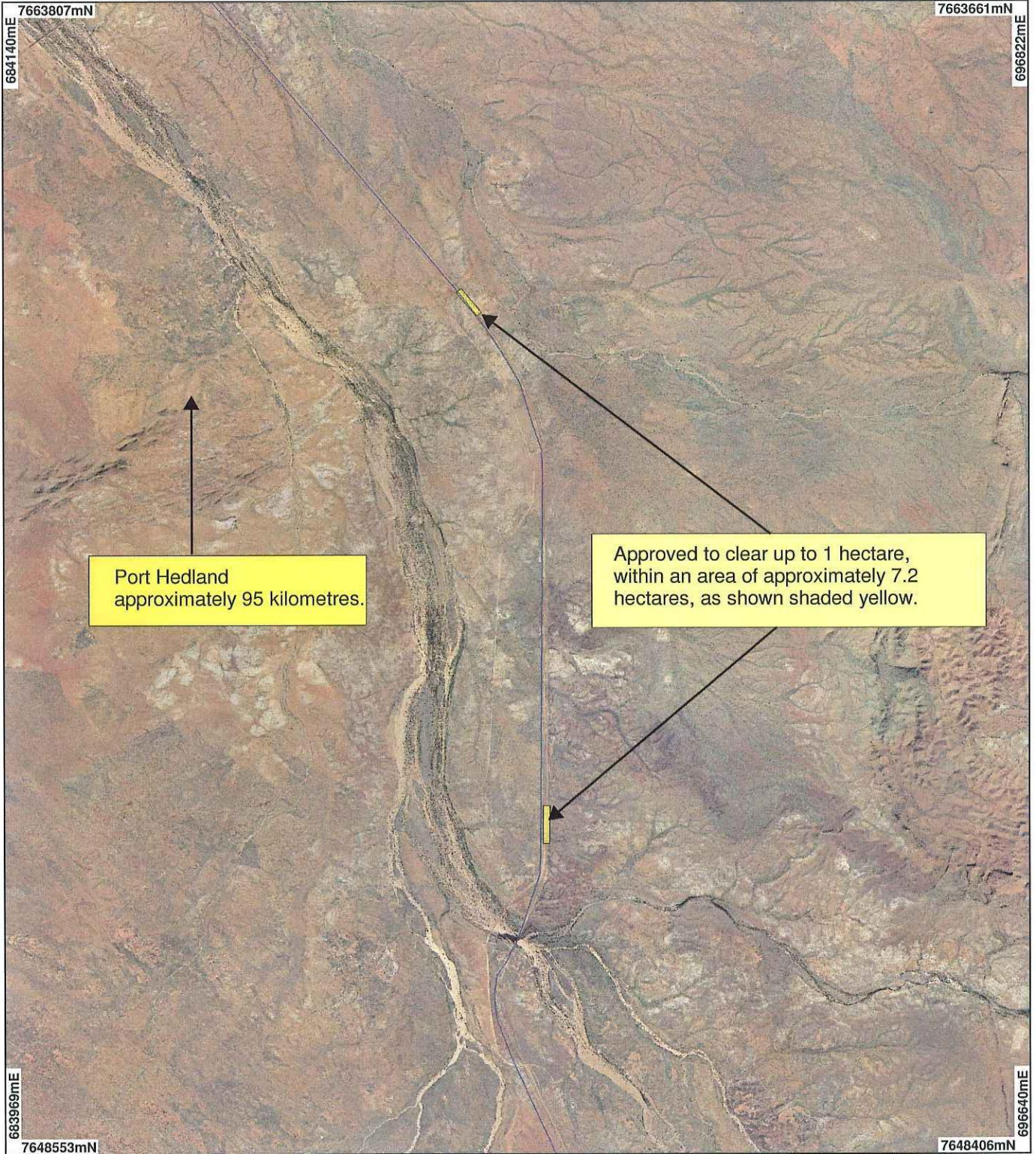


PLAN 2086/1



Port Hedland
approximately 95 kilometres.

Approved to clear up to 1 hectare,
within an area of approximately 7.2
hectares, as shown shaded yellow.

LEGEND

Clearing Instruments

Areas Approved to Clear

Wodgina 1.4m Orthomosaic -
DLI01

Railways - DLI 14/02/05

(cont)

- Mainline
- Siding
- Other types of rail
- Closed - Abandoned
- Closed - Dismantled



0 ————— 2 km

Scale 1:70000

(Approximate when reproduced at A4)

Geocentric Datum Australia 1994

Note: the data in this map have not been
projected. This may result in geometric
distortion or measurement inaccuracies.

GRAHAM COBBY

Date 6/12/07

Officer with delegated authority under Section 20 of
the Environmental Protection Act 1986

Information derived from this map should be
confirmed with the data custodian acknowledged
by the agency acronym in the legend.



Department of
Environment

WA Crown Copyright 2002