

# Plan 2132/1a



## LEGEND

### Clearing Instruments

-  Areas Approved to Clear
-  Cadastre - DLI
-  Christmas Island 60cm Orthomosaic - Landgate06



0 ————— 375 m

Scale 1:15477  
(Approximate when reproduced at A4)

Geocentric Datum Australia 1994

Note: the data in this map have not been projected. This may result in geometric distortion or measurement inaccuracies.

 Date 11/10/07

K Taylor  
Officer with delegated authority under Section 20 of the Environmental Protection Act 1986

Information derived from this map should be confirmed with the data custodian acknowledged by the agency acronym in the legend.



Department of Environment and Conservation

WA Crown Copyright 2002

# Plan 2132/1 b



## LEGEND

### Clearing Instruments

- Areas Approved to Clear
- Cadastre - DLI
- Christmas Island 60cm Orthomosaic - Landgate06



0 ————— 625 m

Scale 1:22516  
(Approximate when reproduced at A4)

Geocentric Datum Australia 1994

Note: the data in this map have not been protected. This may result in geometric distortion or measurement inaccuracies.

*[Signature]* Date 11/10/07  
K Taylor

Officer with delegated authority under Section 20 of the Environmental Protection Act 1985

Information derived from this map should be confirmed with the data custodian acknowledged by the agency acronym in the legend.




Department of Environment and Conservation  
WA Crown Copyright 2002

# Plan 2132/1 c



## LEGEND

### Clearing Instruments

-  Areas Approved to Clear
-  Cadastre - DLI
- Christmas Island 60cm  
Orthomosaic - Landgate06

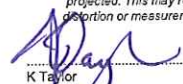


0  750 m

Scale 1:25925  
(Approximate when reproduced at A4)

Geocentric Datum Australia 1994

Note: the data in this map have not been projected. This may result in geometric distortion or measurement inaccuracies.

 Date: 11/10/02

K Taylor  
Officer with delegated authority under Section 20 of  
the Environmental Protection Act 1988

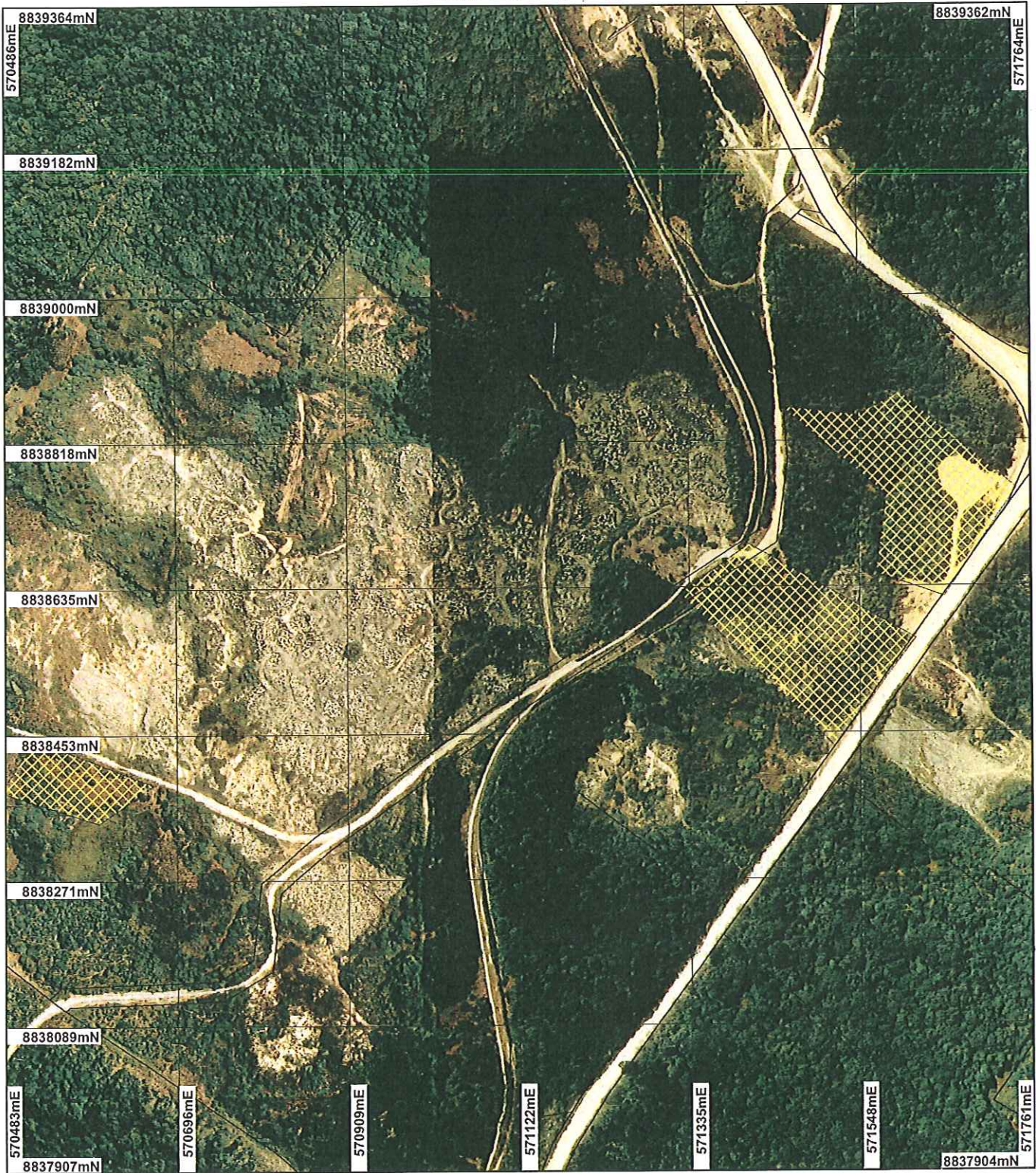
Information derived from this map should be confirmed with the data custodian acknowledged by the agency acronym in the legend.



Department of  
Environment and Conservation

WA Crown Copyright 2002.

# Plan 2132/1 d



## LEGEND

### Clearing Instruments

- Areas Approved to Clear
- Cadastre - DLI
- Christmas Island 15cm Orthomosaic - GA 87



Scale 1:6844  
(Approximate when reproduced at A4)

Geocentric Datum Australia 1994

Note: the data in this map have not been projected. This may result in geometric distortion or measurement inaccuracies.

*[Signature]*  
Date 11/10/07  
K Taylor

Officer with delegated authority under Section 20 of the Environmental Protection Act 1986

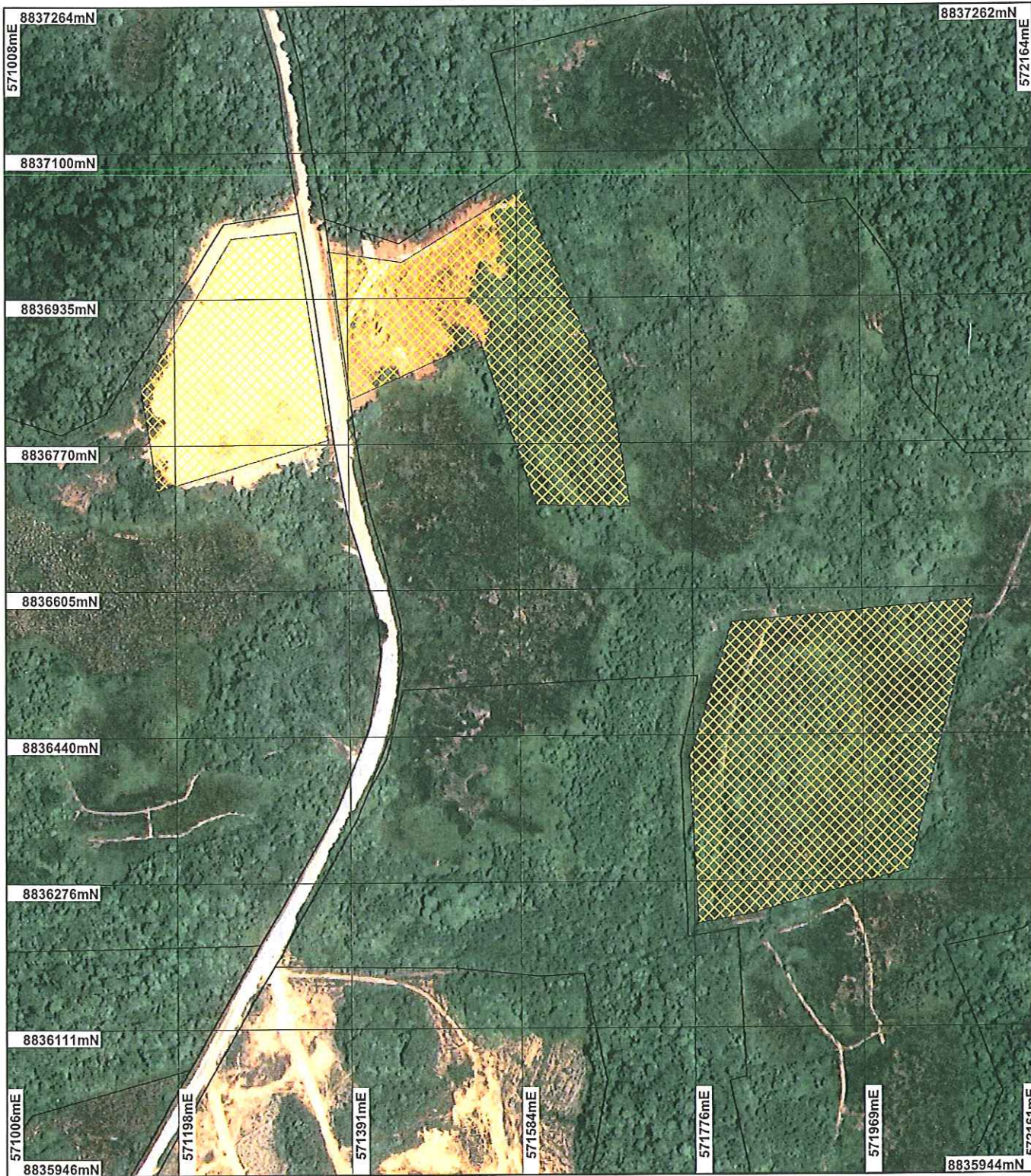
Information derived from this map should be confirmed with the data custodian acknowledged by the agency acronym in the legend.



Department of Environment and Conservation

WA Crown Copyright 2002

# Plan 2132/1 e



## LEGEND

### Clearing Instruments

- Areas Approved to Clear
- Cadastre - DLI
- Christmas Island 60cm Orthomosaic - Landgate06



Scale 1:6189  
(Approximate when reproduced at A4)

Geocentric Datum Australia 1994

Note: the data in this map have not been projected. This may result in geometric distortion or measurement inaccuracies.

*K Taylor* Date 11/10/07  
K Taylor

Officer with delegated authority under Section 20 of the Environmental Protection Act 1986

Information derived from this map should be confirmed with the data custodian acknowledged by the agency acronym in the legend.



Department of Environment and Conservation

WA Crown Copyright 2002