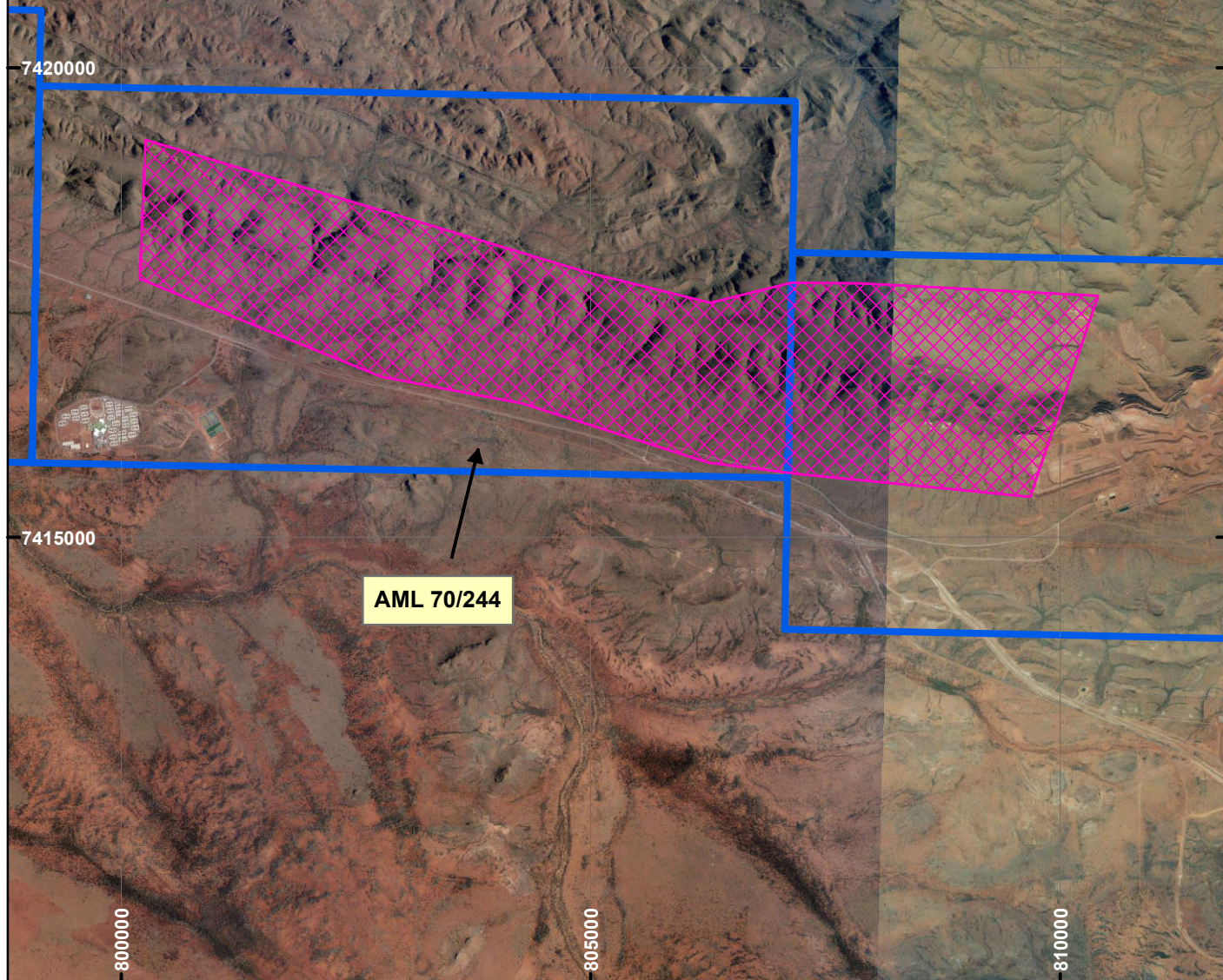


CPS 2160/3 BHP Iron Ore Pty Ltd

CPS 2160/3 BHP Iron Ore Pty Ltd
Area applied to clear: 105 ha for the purpose
of Mineral Exploration, Hydrological Investigations,
Geotechnical Investigations, Weather Masts,
Supporting Infrastructure and Associated Activities,
shown within the cross-hatched area on Iron Ore
(Mount Newman) Agreement Act 1964, Mineral Lease
244SA (AML 70/244)



LEGEND

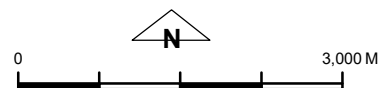


Clearing Instruments



Mining Tenements

Orthophotography sourced from Landgate



Scale 1:70,000

(Approximate when reproduced at A4)

Geocentric Datum Australia 1994

Note: the data in this map have not been
projected. This may result in geometric
distortion or measurement inaccuracies.

..... Date

Officer with delegated authority under Section 20 of
the Environmental Protection Act 1986

Information derived from this map should be
confirmed with the data custodian acknowledged
by the agency acronym in the legend.



WA Crown Copyright 2002