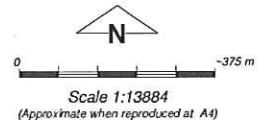


Plan 2256/1a



LEGEND

- Clearing Instruments
- Road Centrelines
- Cadastre for labelling
- Hill River Arrowsmith 1.4m
Orthomosaic - DL100/01/02



Note: the data in this map have not been projected. This may result in geometric distortion or measurement inaccuracies.

S. McEvoy Date 17/4/08
 S. McEvoy
 Officer with delegated authority under Section 20 of the Environmental Protection Act 1986

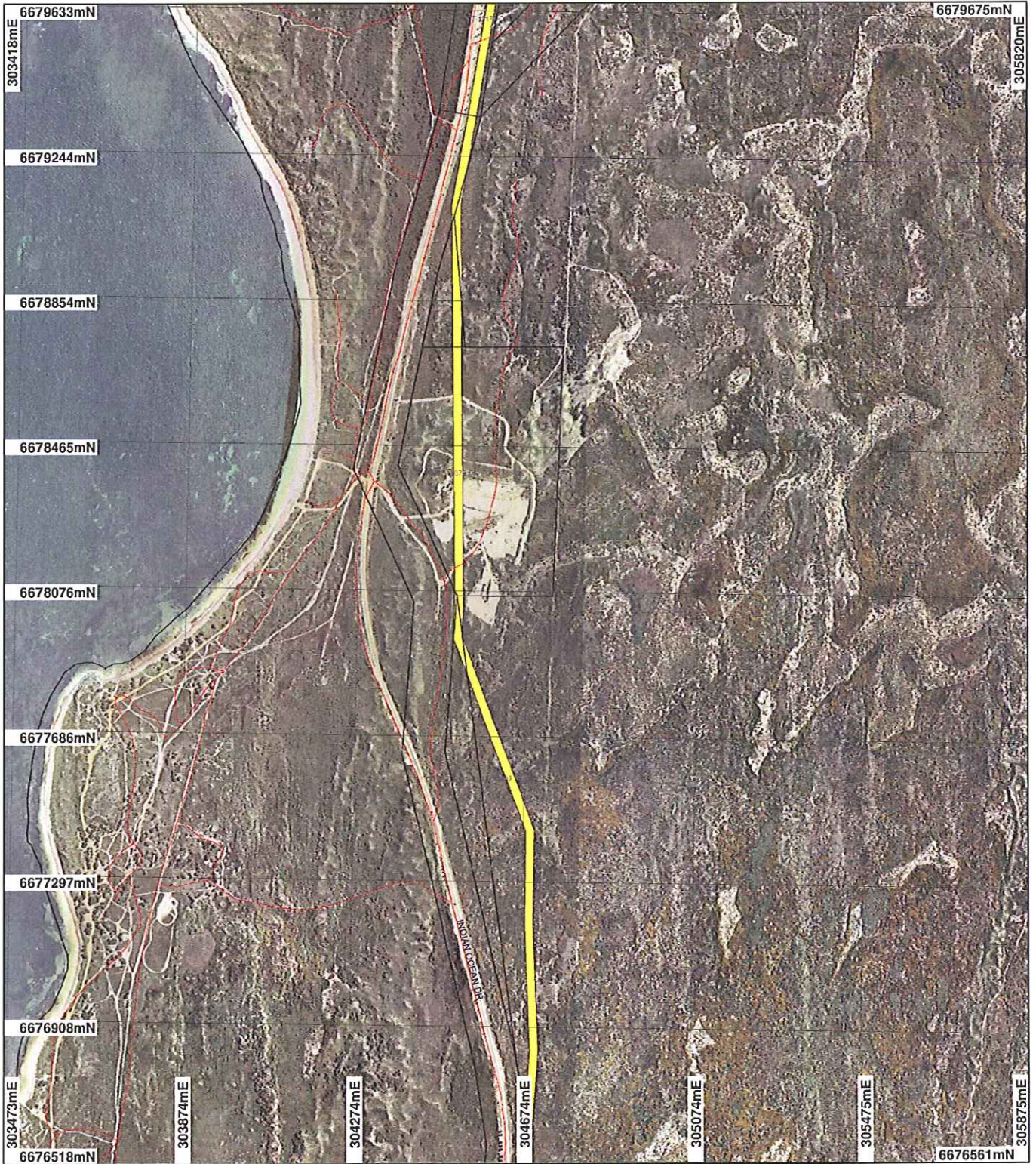
Information derived from this map should be confirmed with the data custodian acknowledged by the agency acronym in the legend.



Department of Environment and Conservation

WA Crown Copyright 2002

Plan 2256/1b



LEGEND

- Clearing Instruments
- Road Centrelines
- Cadastre for labelling
- Hill River Arrowsmith 1.4m
- Orthomosaic - DL100/01/02



Scale 1:13882

(Approximate when reproduced at A4)

Geocentric Datum Australia 1994

Note: the data in this map have not been projected. This may result in geometric distortion or measurement inaccuracies.

S. McEvoy Date 17/4/08

Officer with delegated authority under Section 20 of the Environmental Protection Act 1986

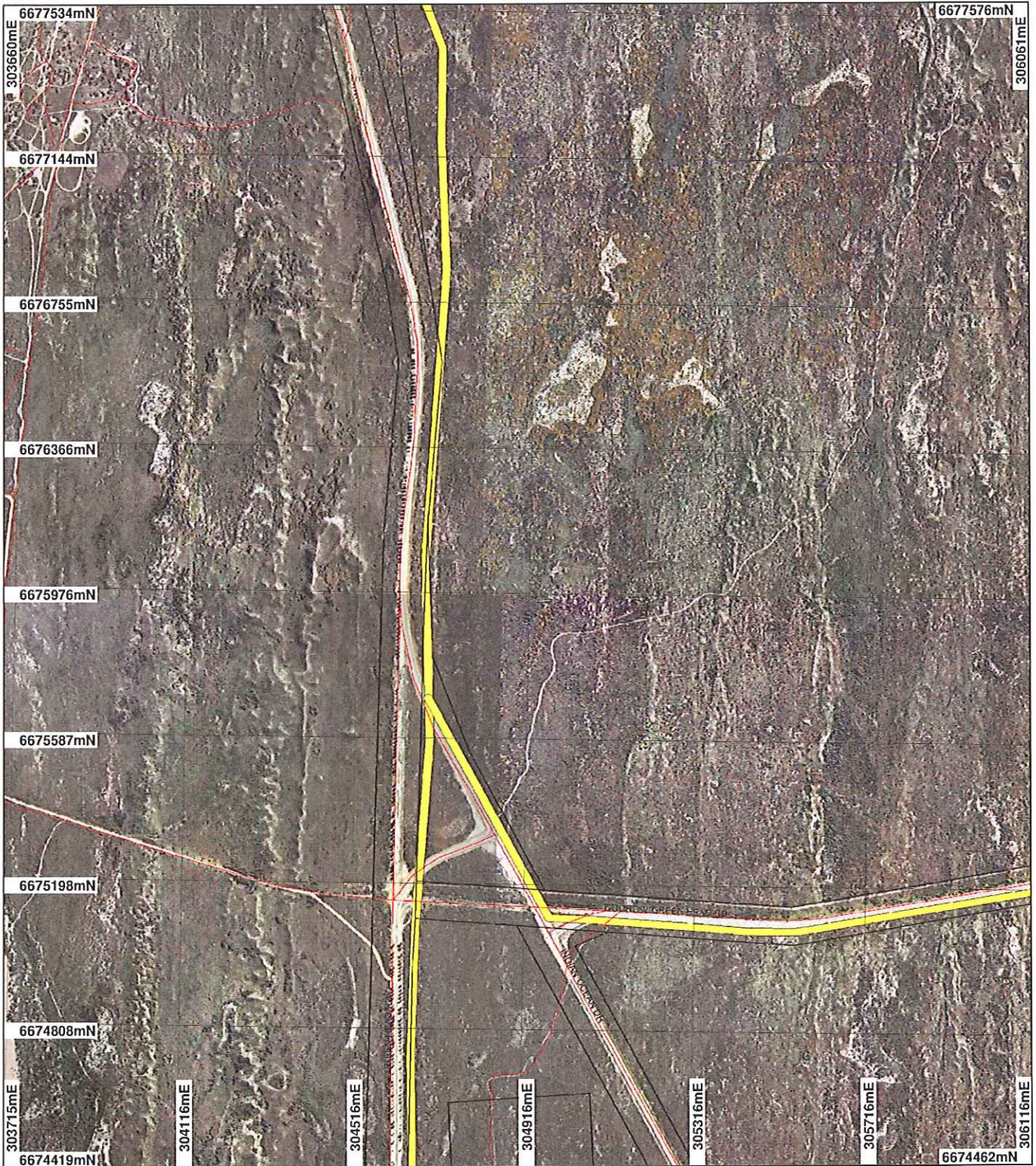
Information derived from this map should be confirmed with the data custodian acknowledged by the agency acronym in the legend.



Department of Environment and Conservation

WA Crown Copyright 2002

Plan 2256/1c



LEGEND

- Clearing Instruments
- Road Centrelines
- Cadastre for labelling
- Hill River Arrowsmith 1.4m
Orthomosaic - DL100/01/02



0 ————— ~375 m

Scale 1:13881

(Approximate when reproduced at A4)

Geocentric Datum Australia 1994

Note: the data in this map have not been projected. This may result in geometric distortion or measurement inaccuracies.

S McEvoy

Date 17/4/08

Officer with delegated authority under Section 20 of the Environmental Protection Act 1986

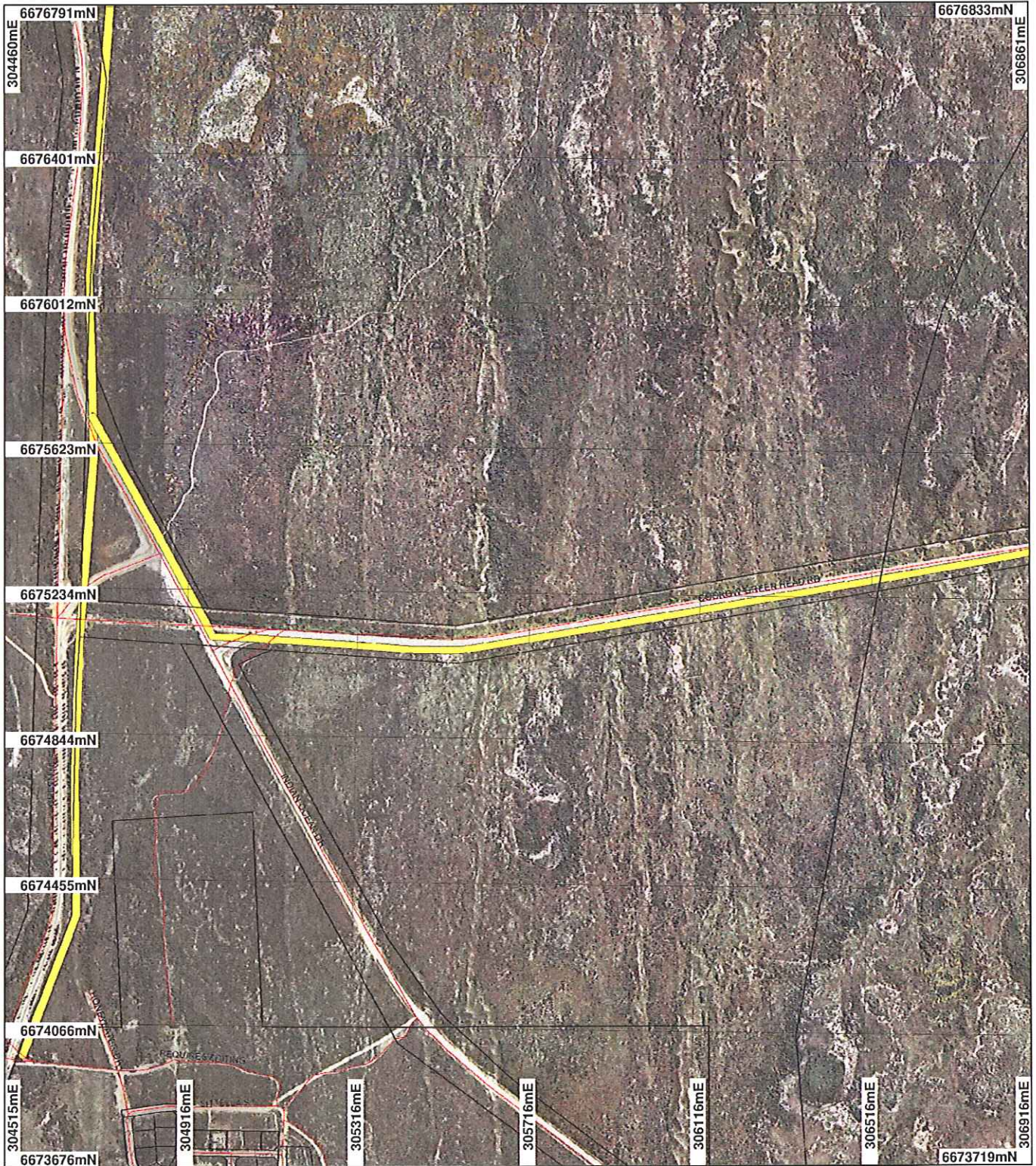
Information derived from this map should be confirmed with the data custodian acknowledged by the agency acronym in the legend.



Department of Environment and Conservation

WA Crown Copyright 2002

Plan 2256/1d



LEGEND

- Clearing Instruments
- Road Centrelines
- Cadastre for labelling
- Hill River Arrowsmith 1.4m
- Orthomosaic - DL100/01/02



Scale 1:13880
(Approximate when reproduced at A4)

Geocentric Datum Australia 1994

Note: the data in this map have not been projected. This may result in geometric distortion or measurement inaccuracies.

S. McEvoy Date 17/4/08
S. McEvoy
Officer with delegated authority under Section 20 of the Environmental Protection Act 1986

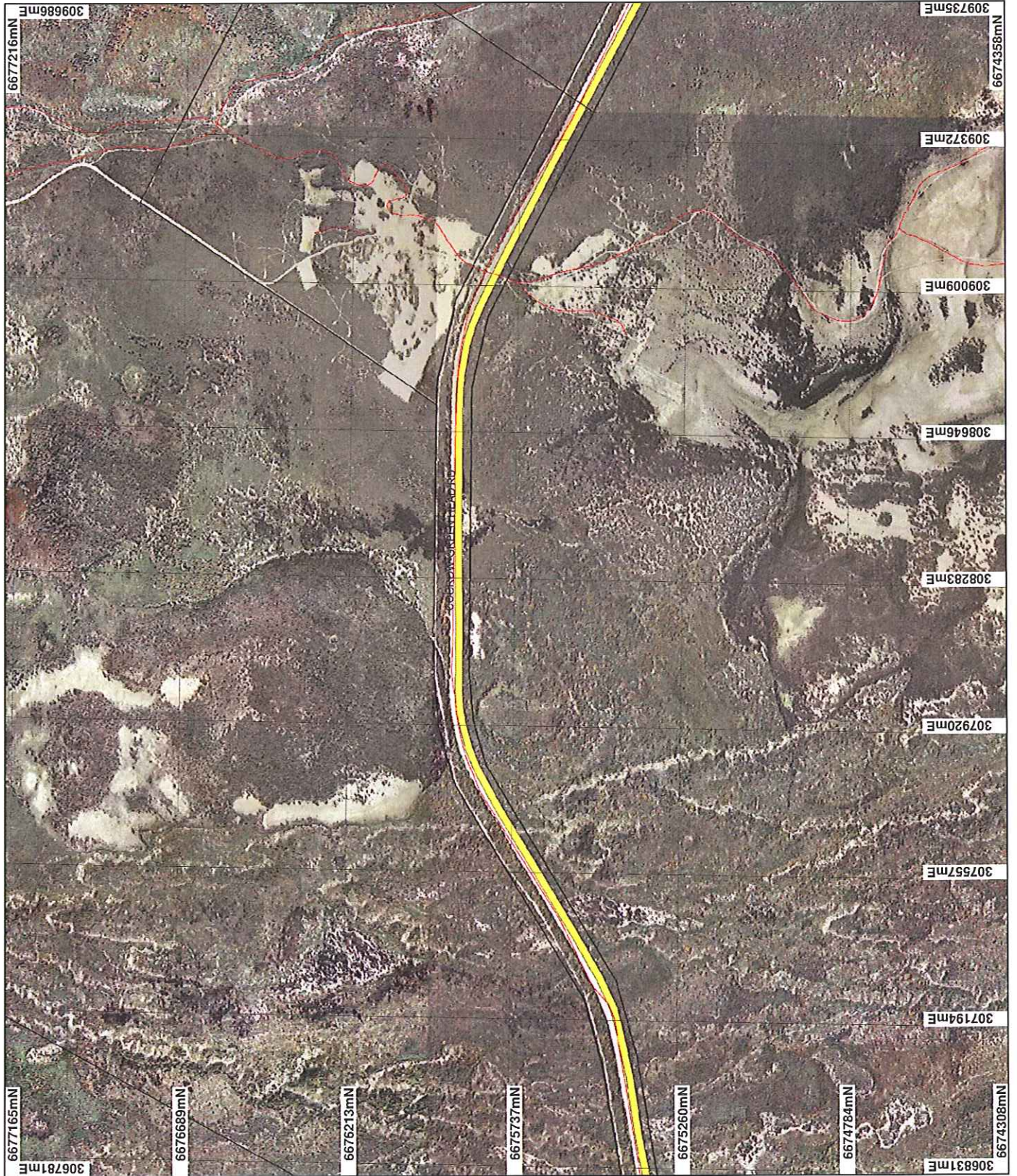
Information derived from this map should be confirmed with the data custodian acknowledged by the agency acronym in the legend.



Department of Environment and Conservation

WA Crown Copyright 2002

Plan 2256/1e



LEGEND

- Clearing Instruments
- Road Centrelines
- Cadastral for labelling
- Hill River Arrowsmith 1.4m Orthomosaic -
DLU000102



0 375 m

Scale 1:13880

(Approximate when reproduced at A4)

Geocentric Datum Australia 1994

Note: the data in this map have not been projected. This may result in geometric distortion or measurement inaccuracies.

Smiley Date: 17/4/08

S. McEvoy

Officer with delegated authority under Section 20 of the Environmental Protection Act 1986

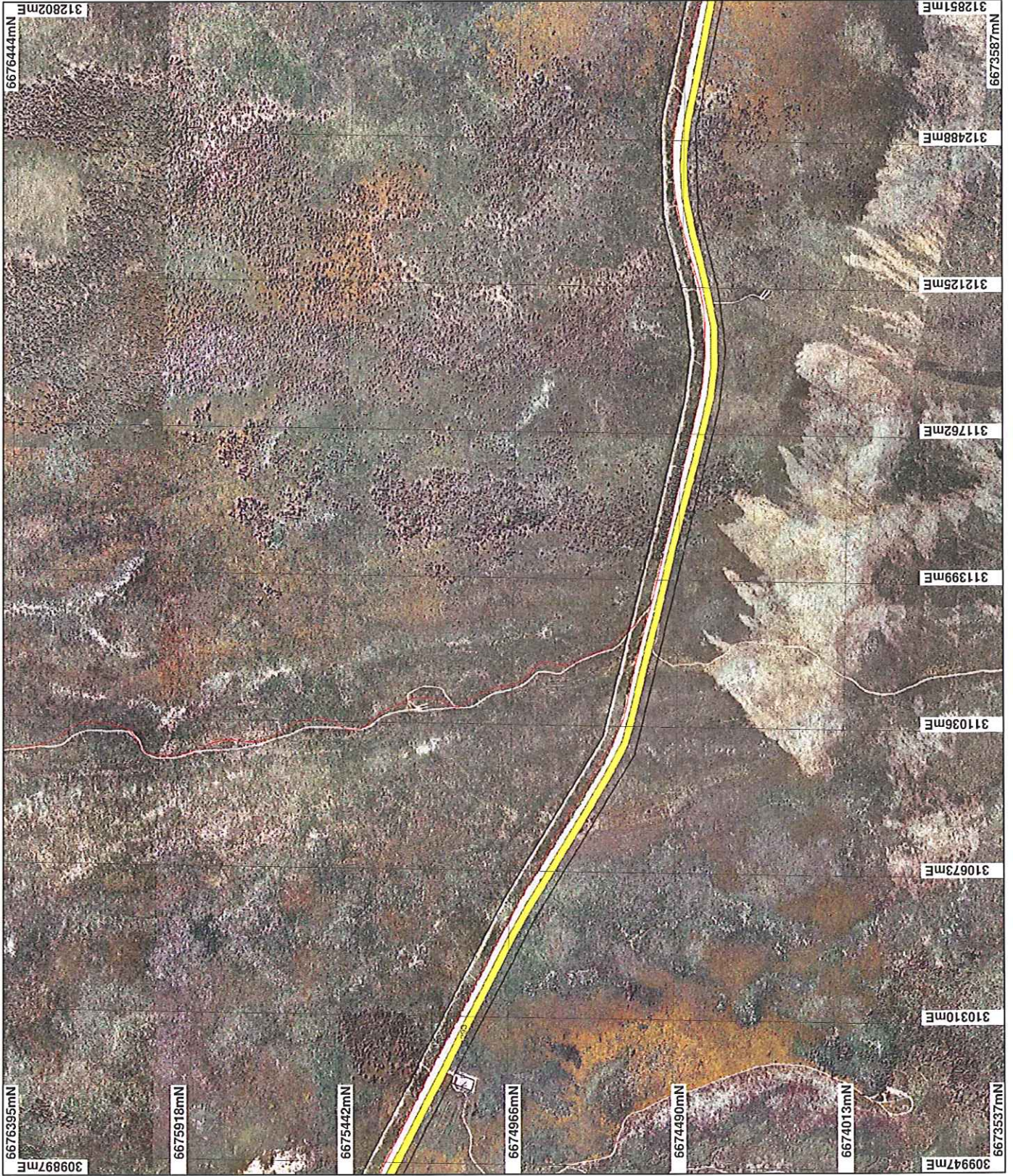
Information derived from this map should be confirmed with the data custodian acknowledged by the agency acronym in the legend.



Department of Environment and Conservation

W.A. Crown Copyright 2002

Plan 2256/1f



309897mE 6676395mN
6675918mN
6675442mN
6674966mN
6674490mN
6674013mN
6673537mN

6676444mN

312802mE

309947mE
310310mE
310673mE
311036mE
311399mE
311762mE
312125mE
312488mE
312851mE

309947mE 6673537mN
310310mE 6674013mN
310673mE 6674490mN
311036mE 6674966mN
311399mE 6675442mN
311762mE 6675918mN
312125mE 6676395mN
312488mE 6676444mN
312851mE 6676900mN

LEGEND

- Clearing Instruments
- Road Centrelines
- Cadastral for labelling
- Hill River Arrowsmith 1.4m Orthomosaic - DL0001102



0 37.5 m

Scale 1:15880

(Approximate when reproduced at A4)

Geocentric Datum Australia 1994

Note: the data in this map have not been projected. This may result in geometric distortion or measurement inaccuracies.

S. MacEvoy
Date 17/9/08

Officer with delegated authority under Section 20 of the Environmental Protection Act 1986

Information derived from this map should be confirmed with the data custodian acknowledged by the agency acronym in the legend.



Department of Environment and Conservation

WA Green Copyright 2002

Plan 2256/1g



LEGEND

- Clearing Instruments
- Road Centrelines
- Cadastral for labelling
- Hill River Arrowsmith 1.4m Orthomosaic - DL0001/02



0 375 m

Scale 1:13879

(Approximate when reproduced at A4)

Geocentric Datum Australia 1994

Note: the data in this map have not been projected. This may result in geometric distortion or measurement inaccuracies.

S McEvoy Date 17/4/08

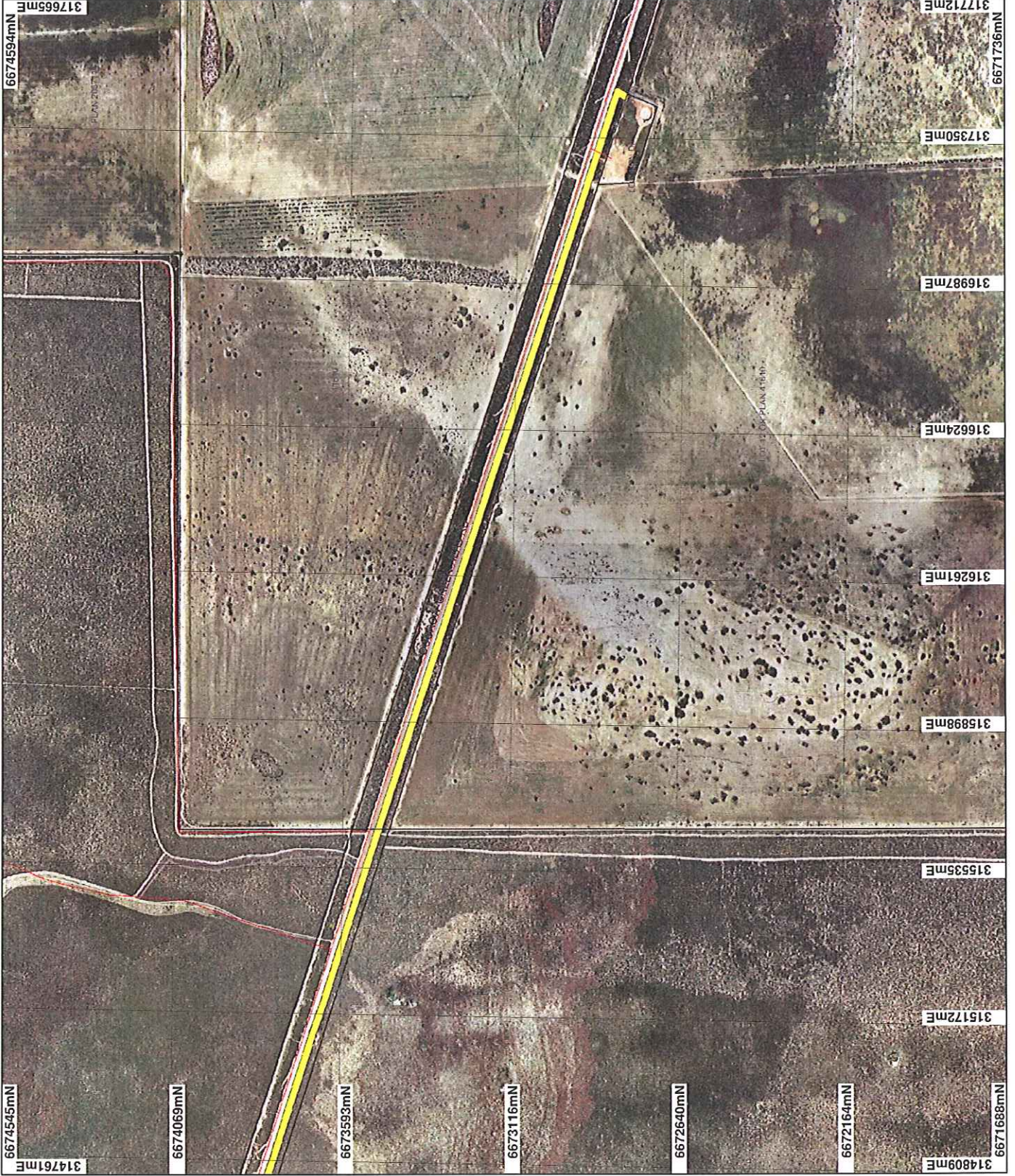
Officer with delegated authority under Section 20 of the Environmental Protection Act 1986



Department of Environment and Conservation

W.A. Crown Copyright 2002

Plan 2256/1h



LEGEND

- Clearing Instruments
- Road Centrelines
- Cadastral for labelling
- Hill River Arrowsmith 1.4m Orthomosaic - DL000101/02



0 37.5 m

Scale 1:13878
(Approximate when reproduced at A4)

Geocentric Datum Australia 1994

Note: the data in this map have not been processed. This may result in geometric distortion or measurement inaccuracies.

Sean Evey Date 17/9/08
S. McEvoy

Officer with delegated authority under Section 20 of the Environmental Protection Act 1986

Information derived from this map should be confirmed with the data custodian acknowledged by the agency acronym in the legend.



Department of Environment and Conservation

WA Crown Copyright 2002